

CANON

FAX-L295/L290

SOFTWARE

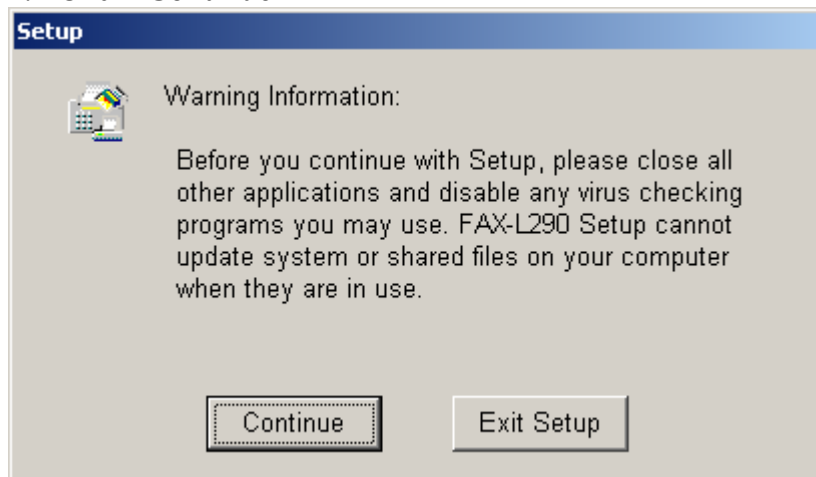
MANUAL

For Windows XP installation

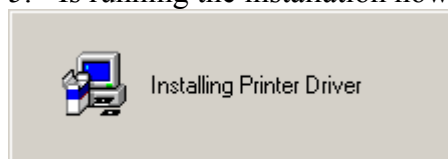
1. Make sure the L295 is connected to your pc before you begin to install the driver.
2. Insert the CD Rom given into the CD Rom drive, it will auto startup. You will see the screen as shown below.
3. Click '**Next**' to continue.



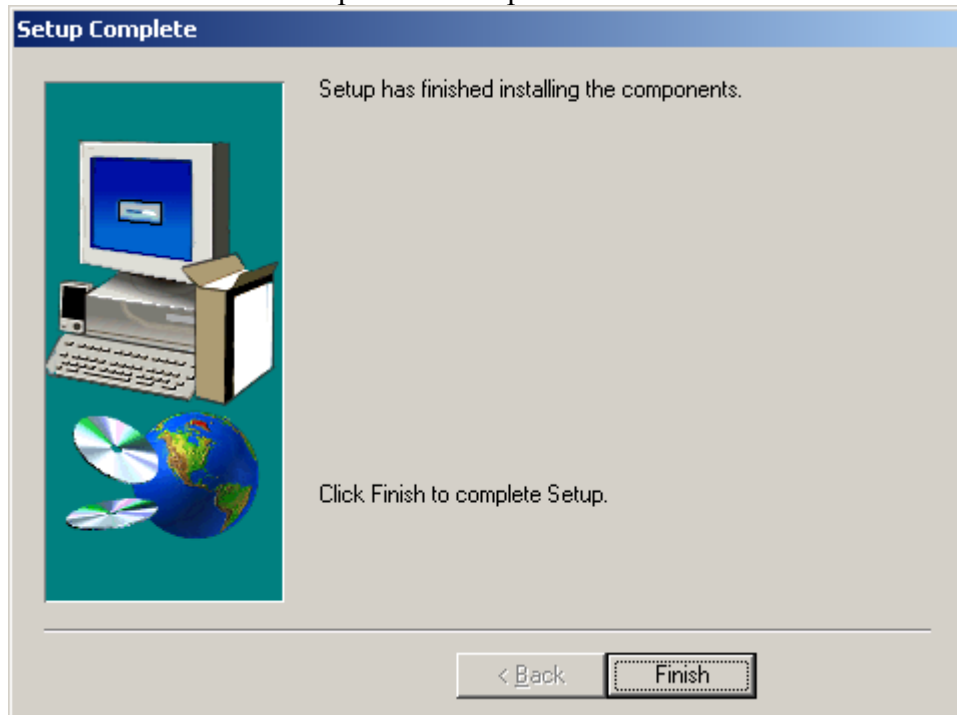
4. Click '**Continue**'



5. Is running the installation now.

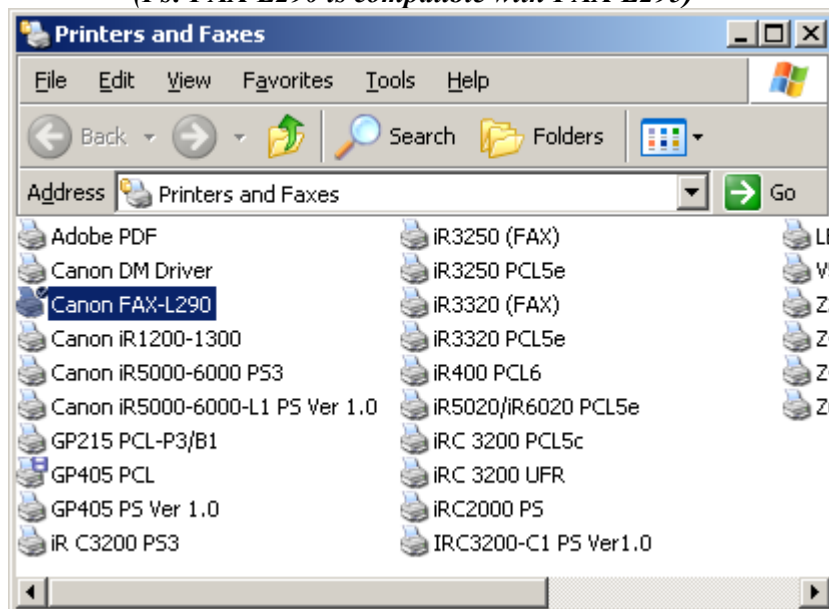


6. Click **'Finish'** to complete the setup.

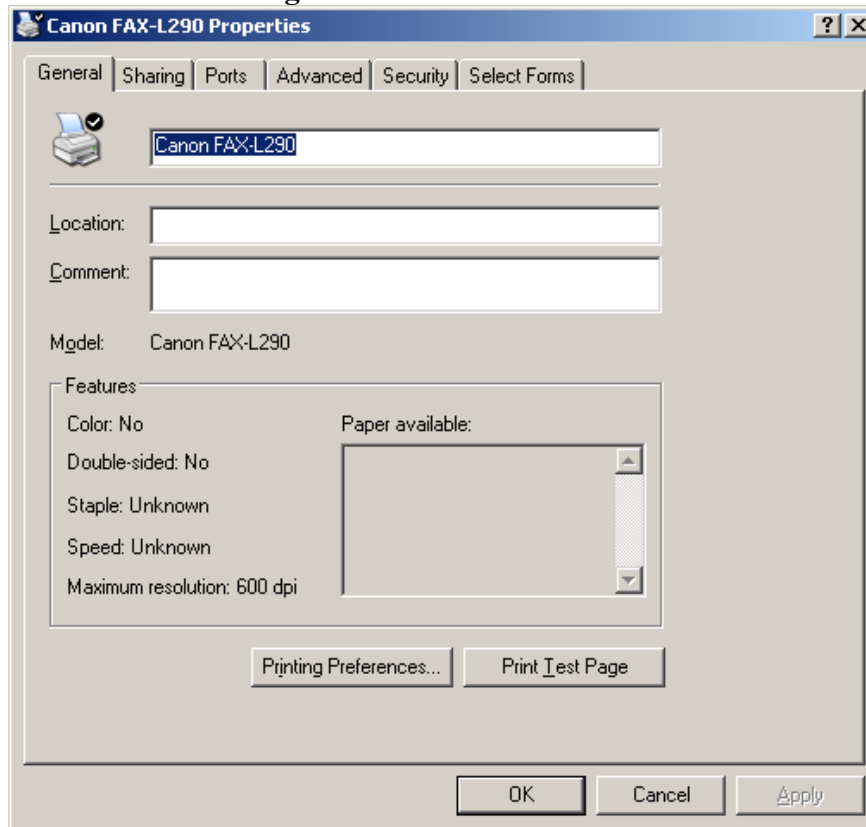


7. Go to **'Start'-> 'Control Panel'- 'Printer and Faxes'**, you will see **Canon Fax_L290 icon**. Highlight and right click on the icon, select **'Properties'**.

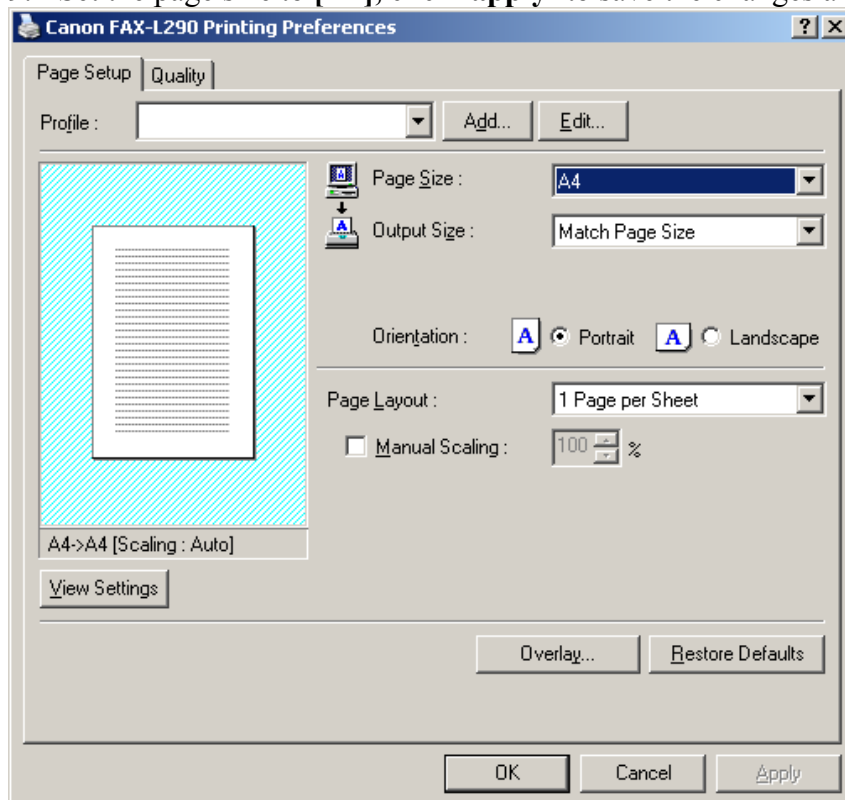
(Ps: FAX-L290 is compatible with FAX-L295)



8. Click on 'Printing Preferences' icon.



9. Set the page size to [A4], click 'apply' to save the changes and click 'OK'



10. You will see this screen, click on the 'Print Test Page' and collect the test page from your printer.

