

CANON

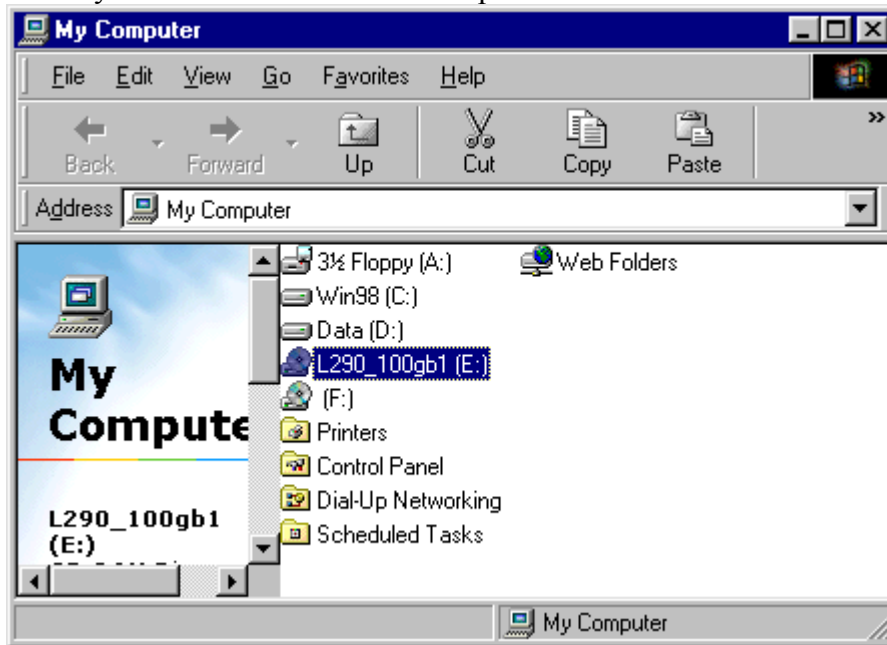
FAX-L295/L290

SOFTWARE

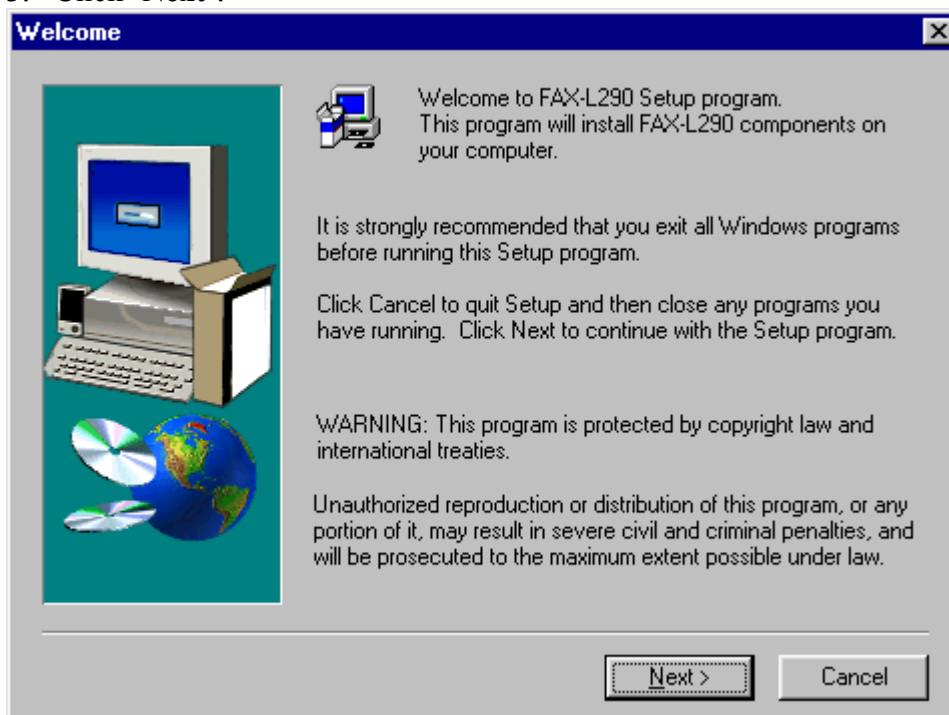
MANUAL

For Windows 98/ME Installation.

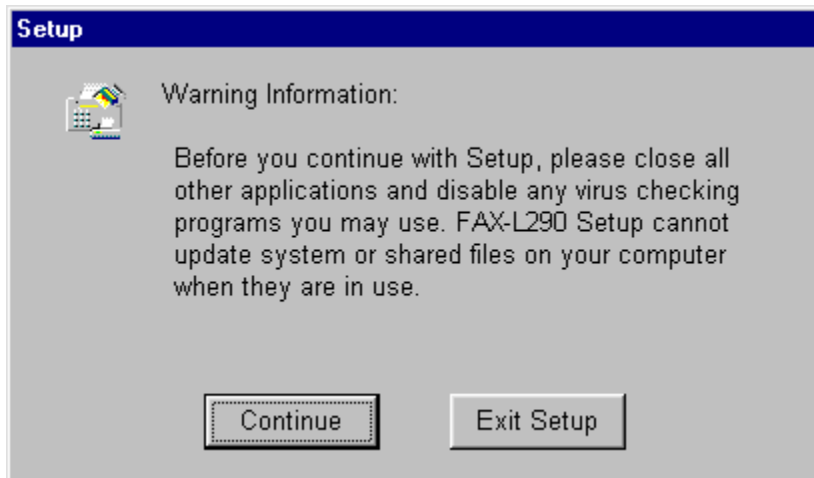
1. Insert the installation disk into your disk drive.
2. If the Auto Run did not start up automatically. Go to 'My Computer'-> double click on your disk drive to run the setup.



3. Click 'Next'.



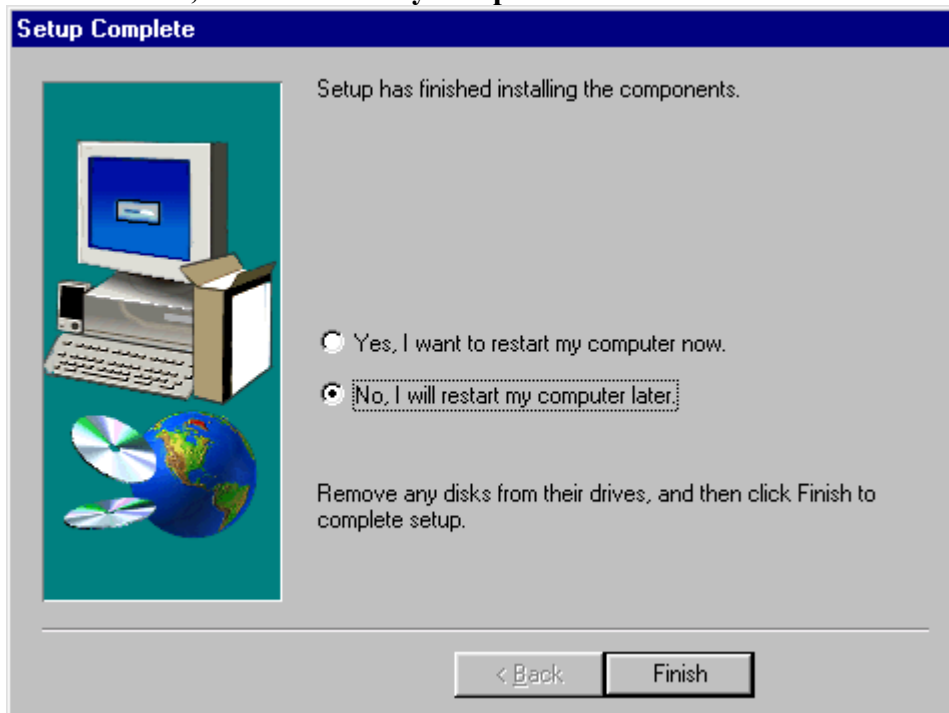
4. Click **'Continue'**.



5. Is running the installation. Please Wait.

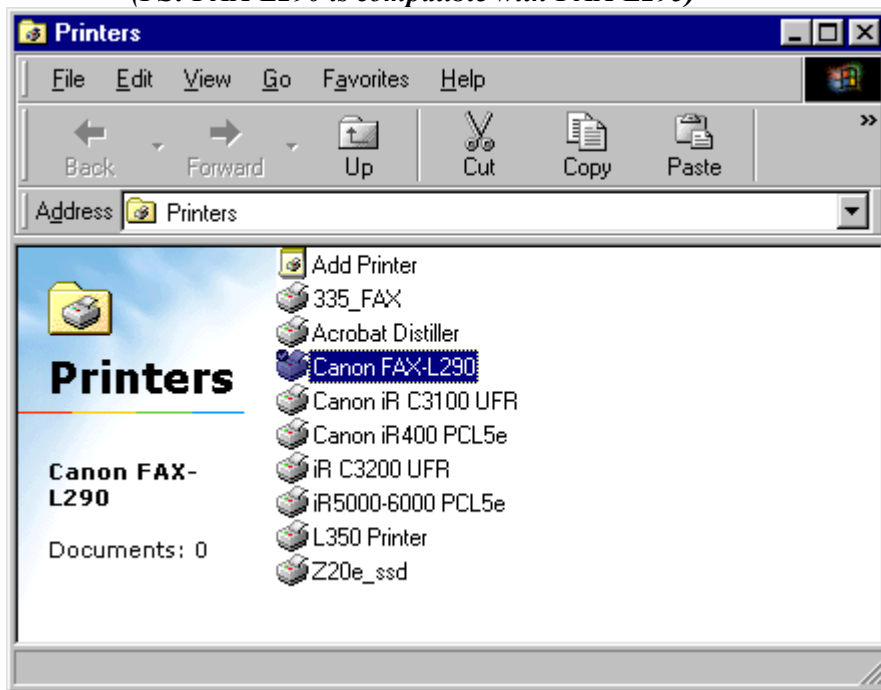


6. Select **'No, I will restart my computer later'** and click **'Finish'**.

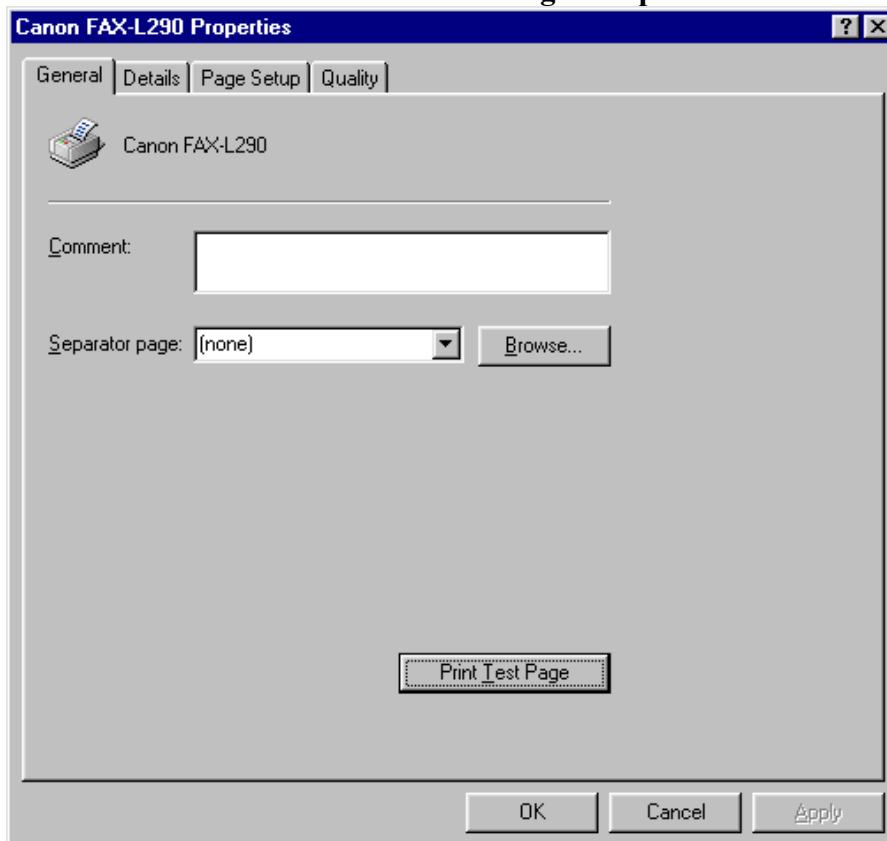


7. Go to 'Start' -> 'Setting' -> 'Printers', you will see the 'Canon Fax-L290'.
8. Highlight the Canon Fax-L290 icon, right click and select 'Properties'.

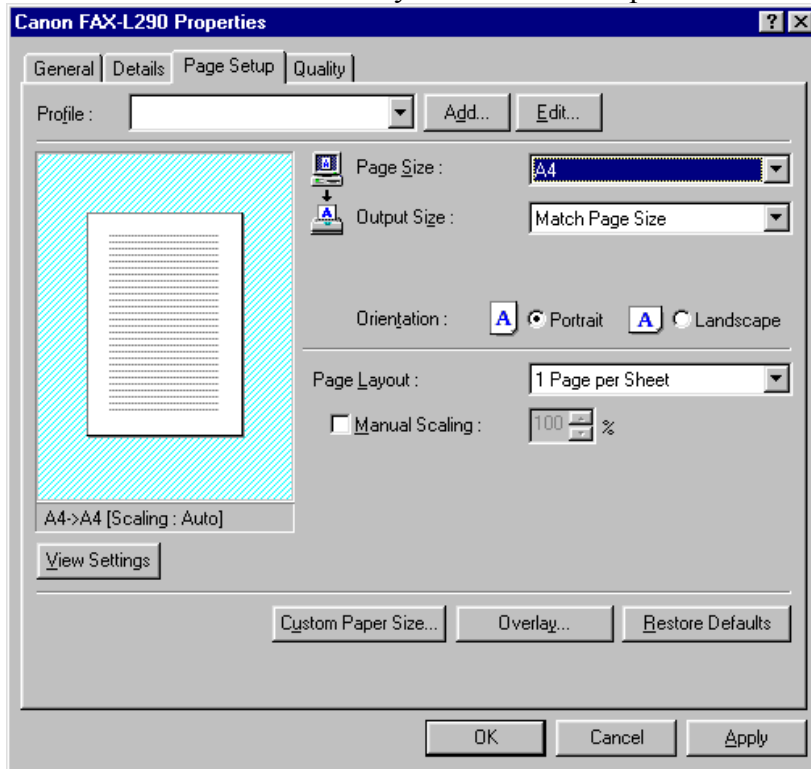
(PS: FAX-L290 is compatible with FAX-L295)



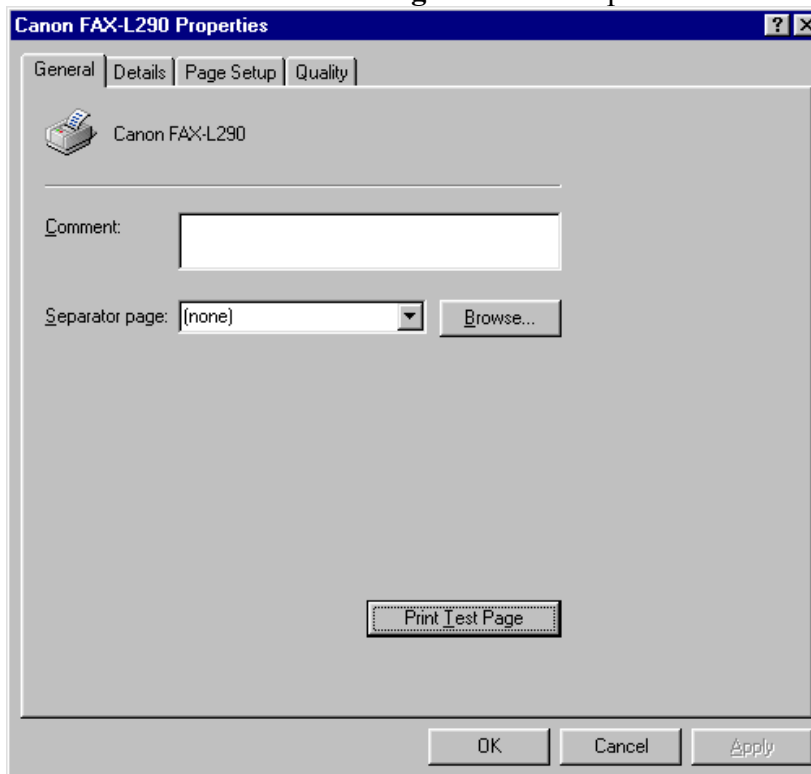
9. You will see this screen. Click on 'Page Setup' tab.



- Under the page size, default is shown 'Letter'. Change to 'A4' and click 'Apply'.
- Select 'General' tab after you have done Step 10.



- Click on the 'Print Test Page' to do a test print.



13. Click 'Yes' and you may collect the print out from L295 Printer.

