

CANON

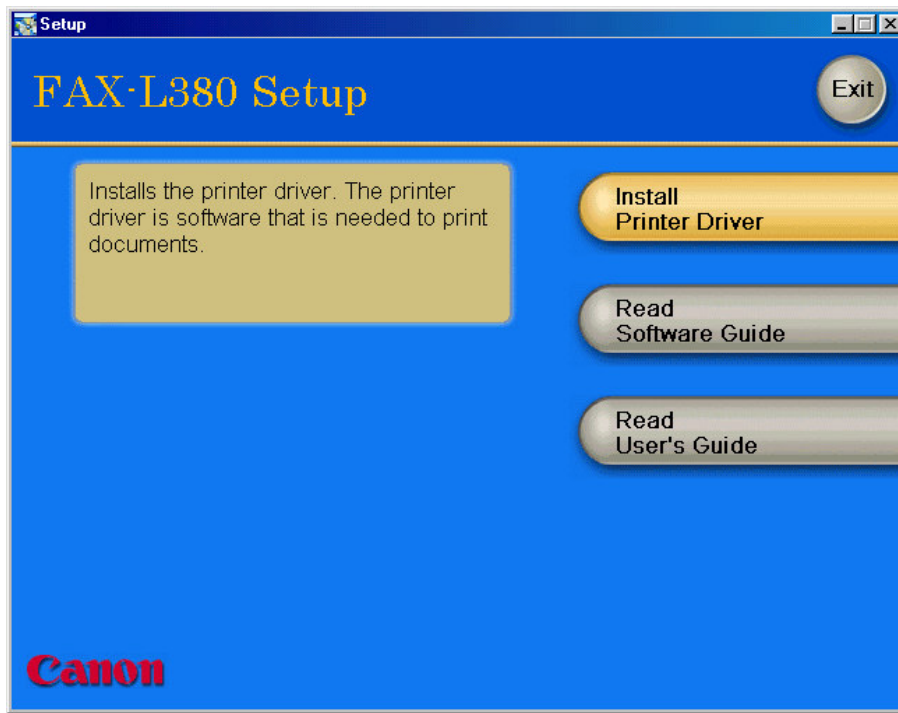
FAX-L380

SOFTWARE

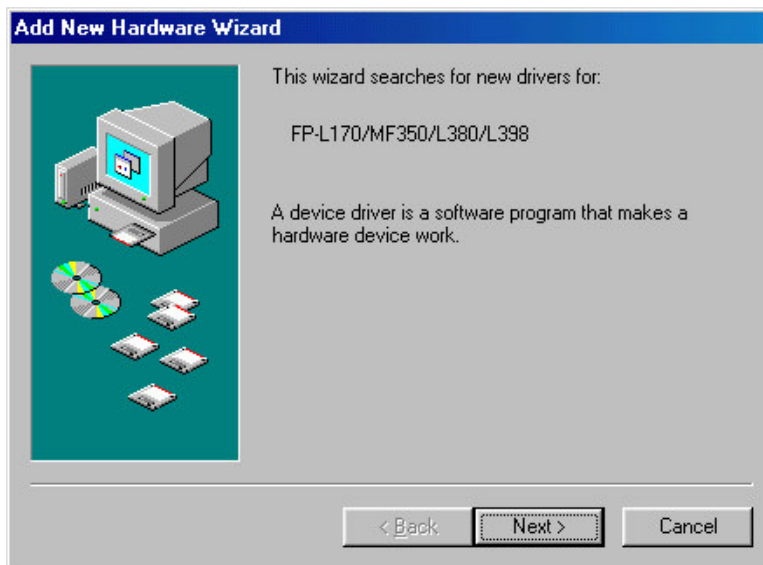
MANUAL

For Windows 98/ME Installation.

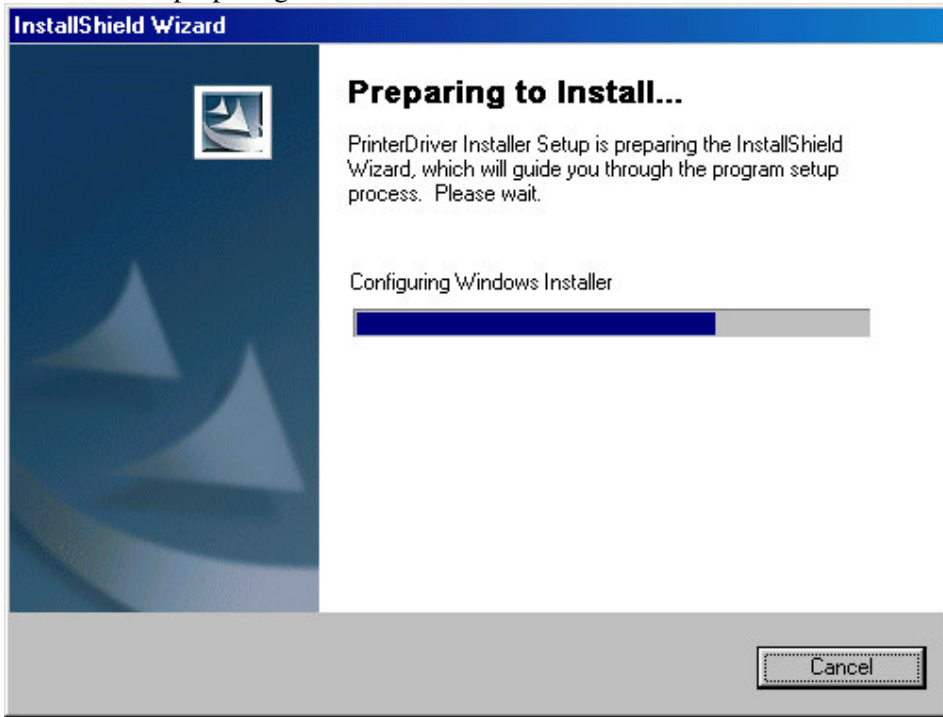
1. Insert the installation disk into your disk drive.
2. FAX-L380 Setup installation. Click Install Printer Driver.



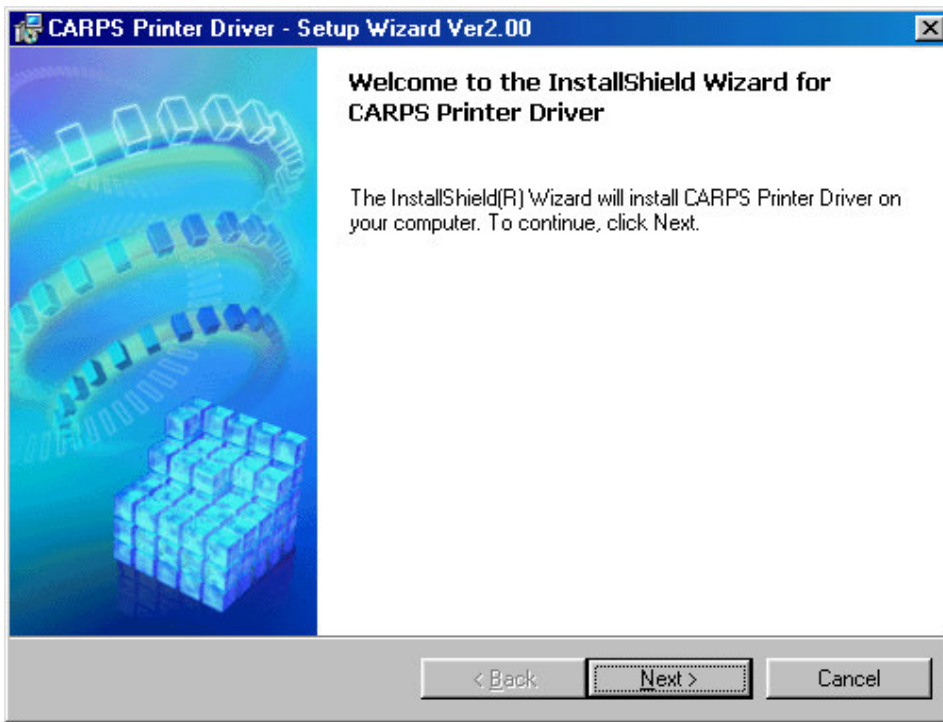
3. Click 'Next'.



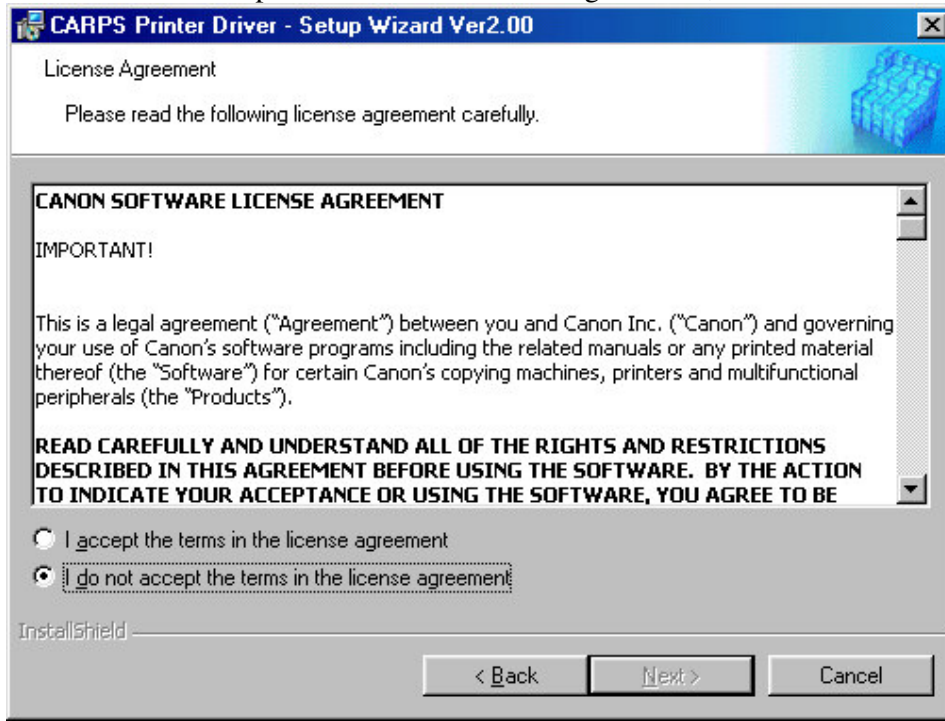
4. Wizard is preparing to install



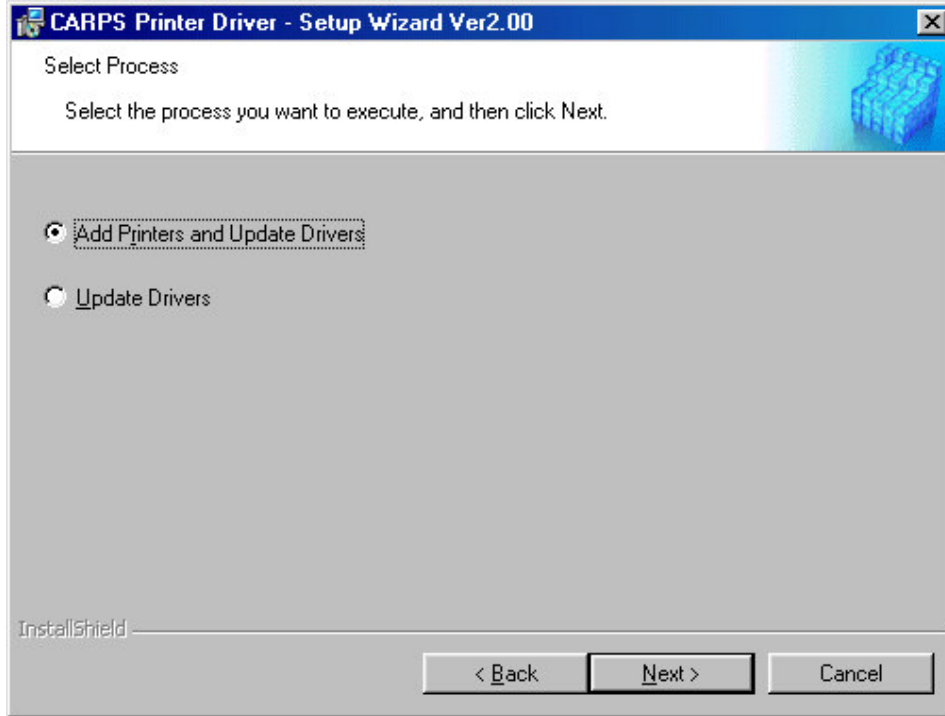
5. Click 'Next'.



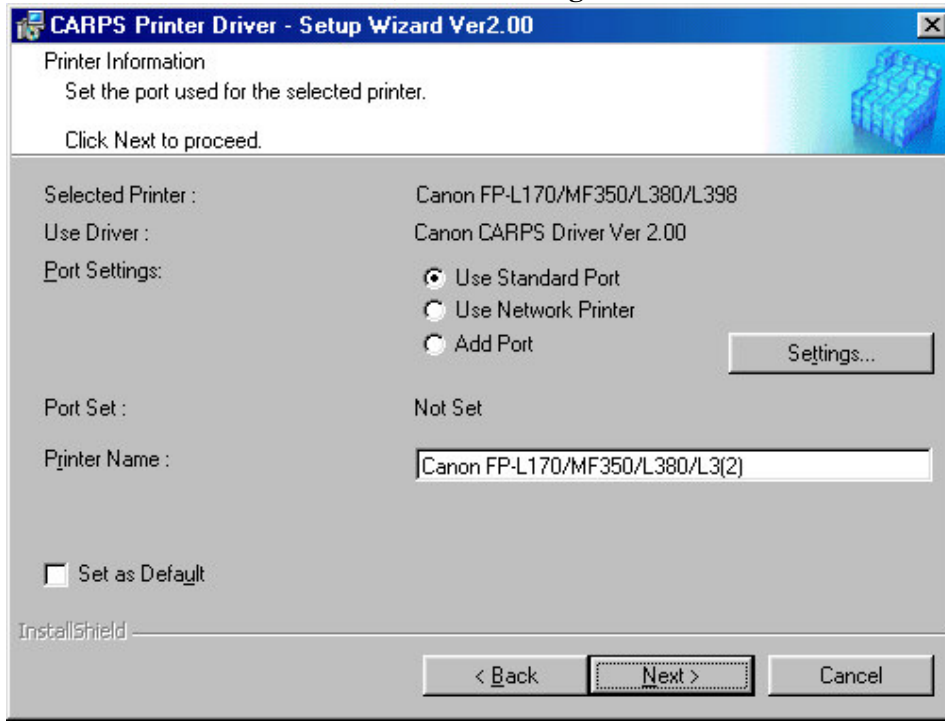
6. Check on 'I accept the terms in the license agreement', click 'Next' to continue.



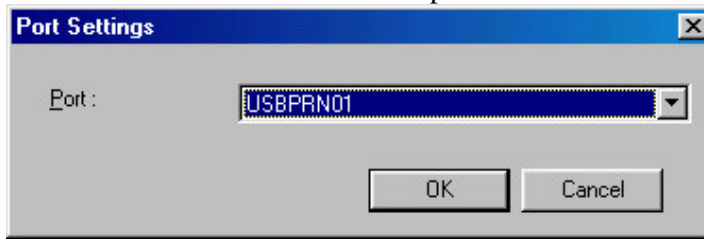
7. Select 'Add Printers and Update Drivers', click 'Next'



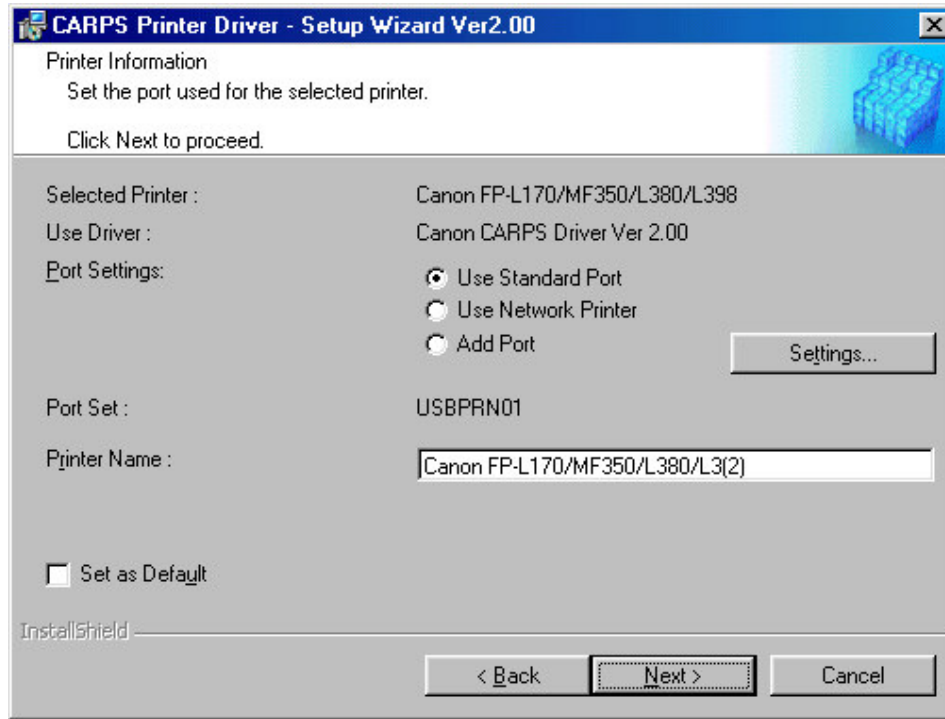
8. Select 'Use Standard Port', select 'Settings'



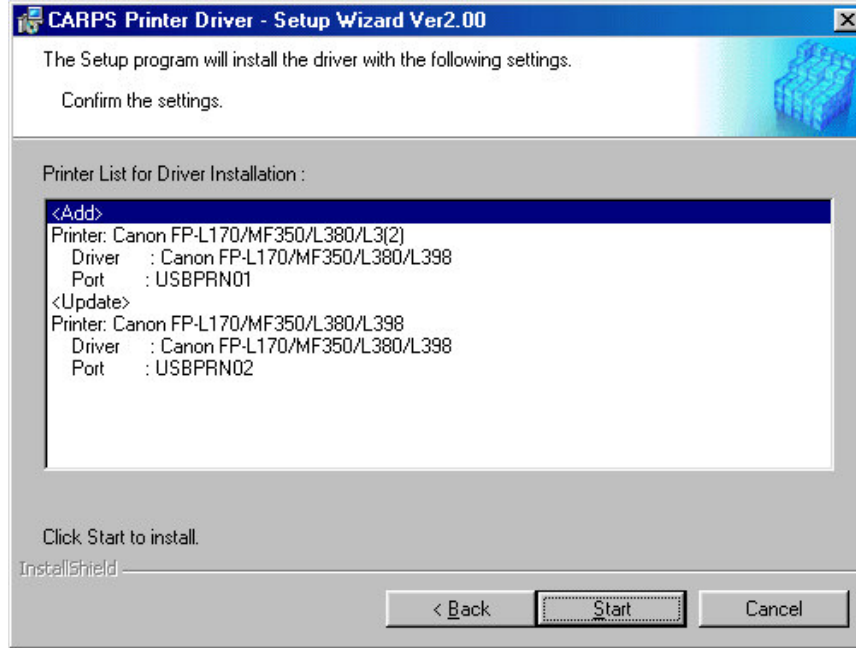
9. Arrow down to select the USB port



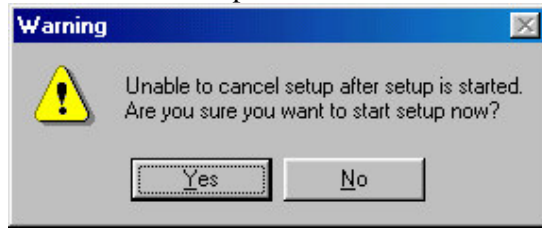
10. Click 'Next'.



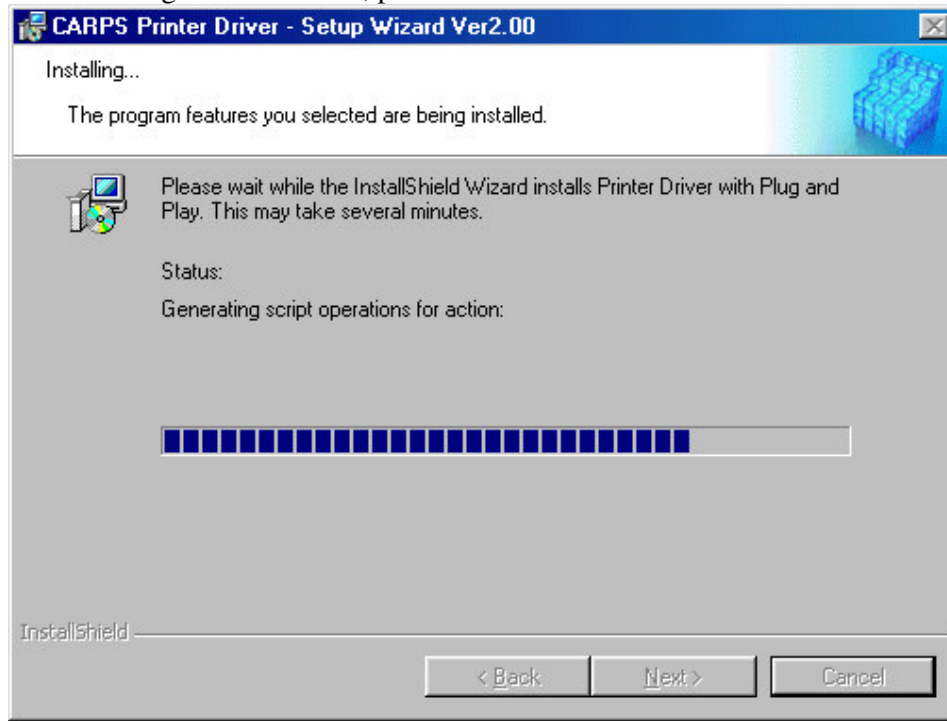
11. Click 'Start'.



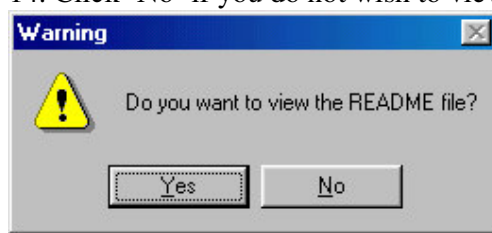
12. Click 'Yes' to proceed



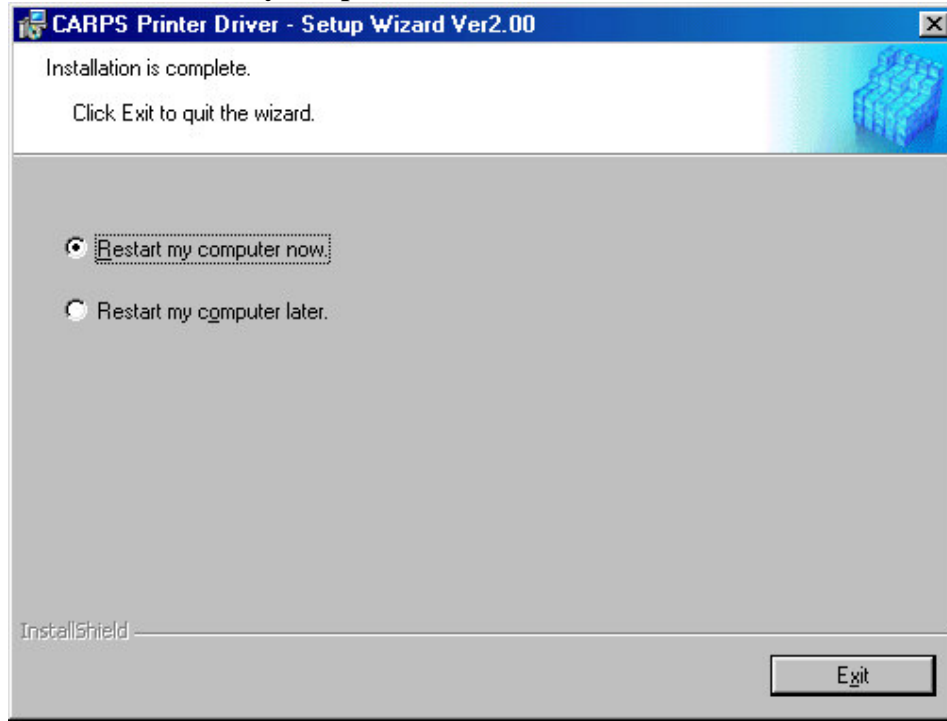
13. Is running the installation, please wait.



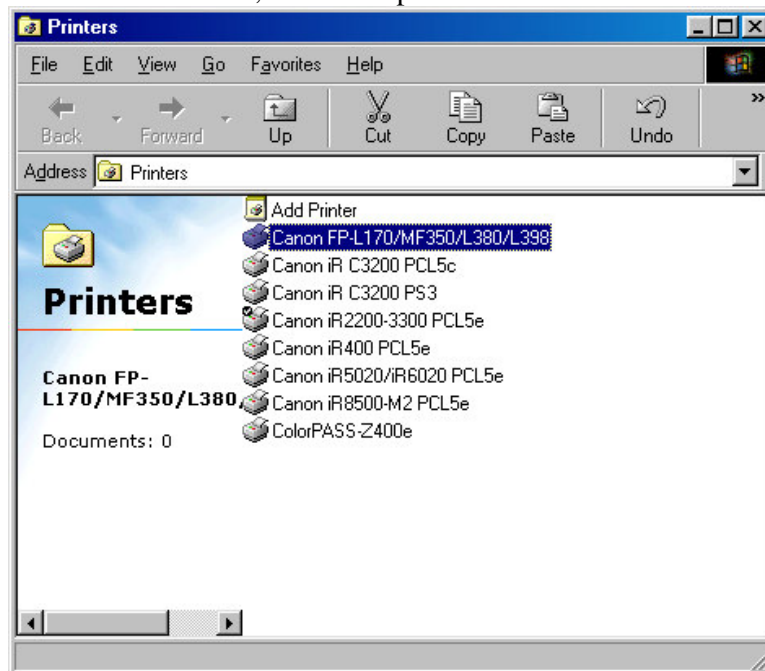
14. Click 'No' if you do not wish to view the ReadMe File.



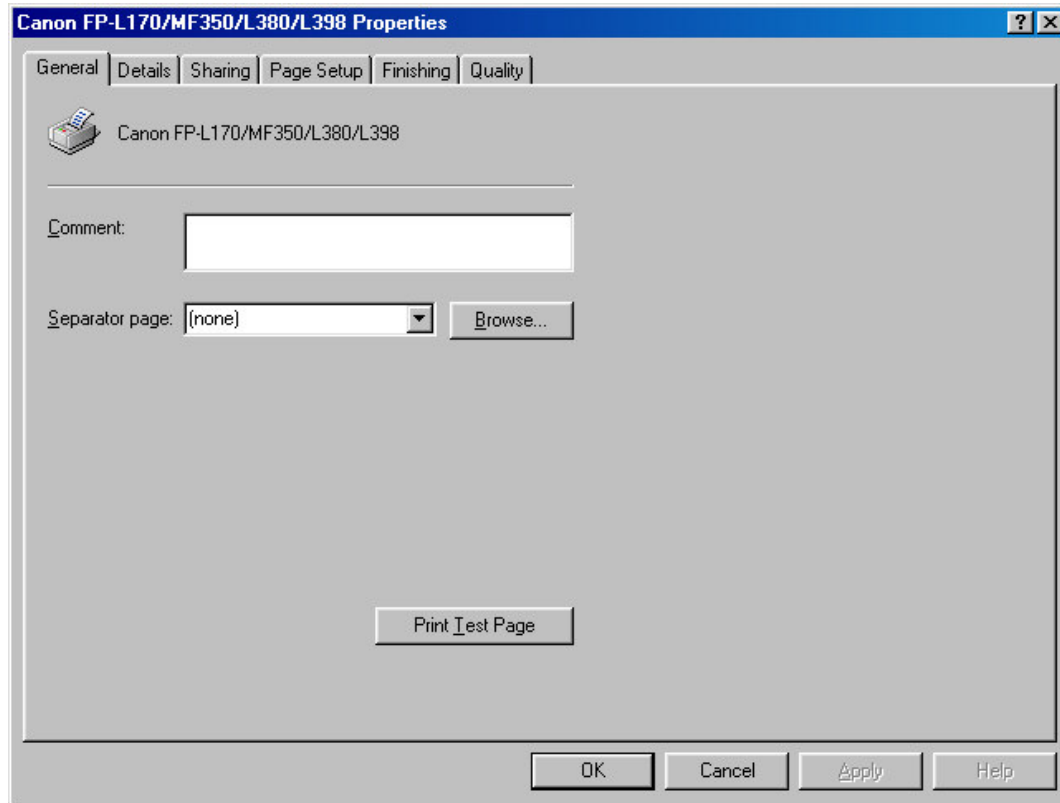
15. Click 'Restart my computer later' and click 'Exit'.



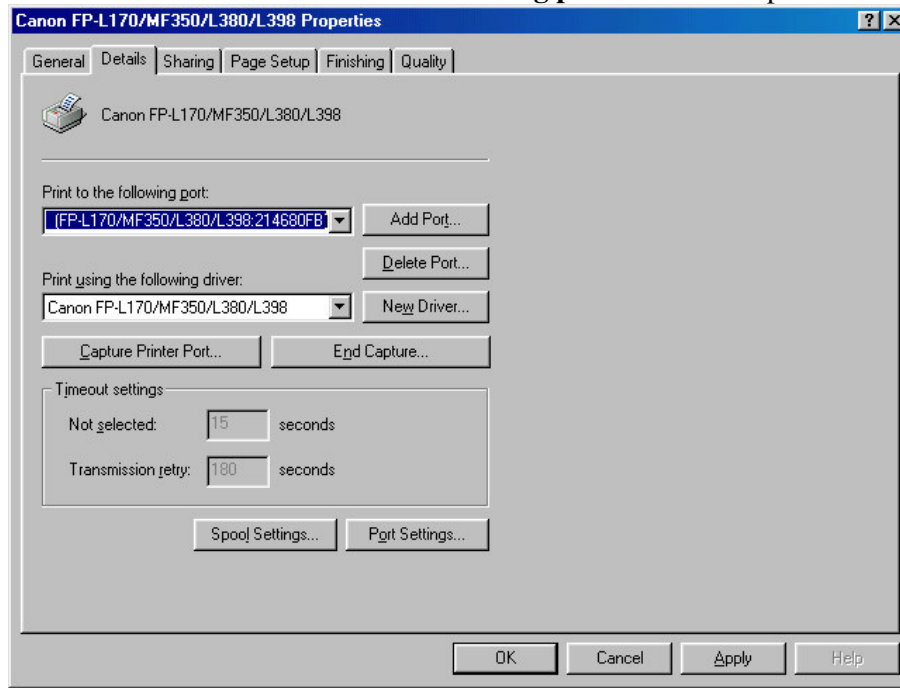
16. Go to 'Start' -> 'Settings' -> 'Printers', you see 'L380' icon. Highlight and right click on the icon, select 'Properties'.



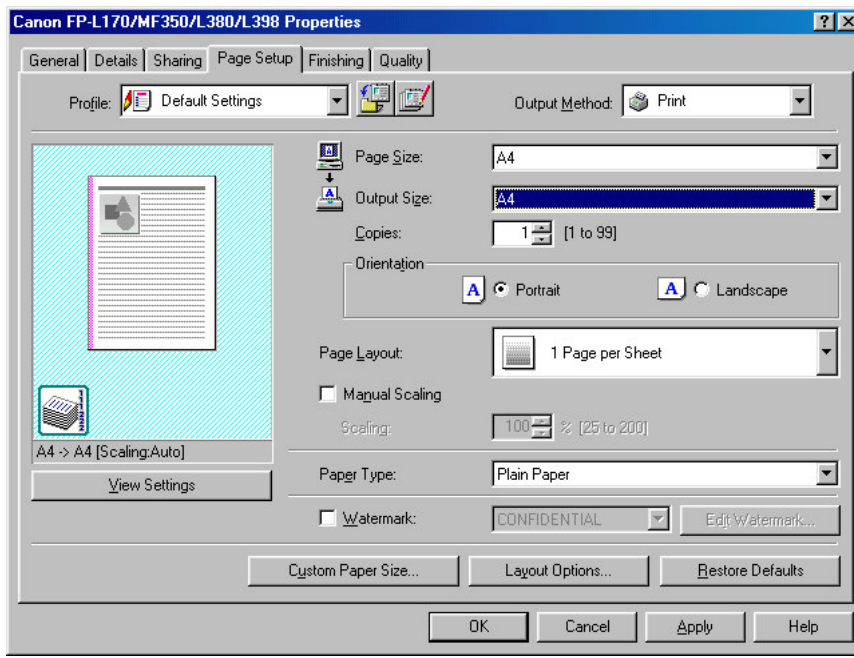
17. Click 'Details' Tab



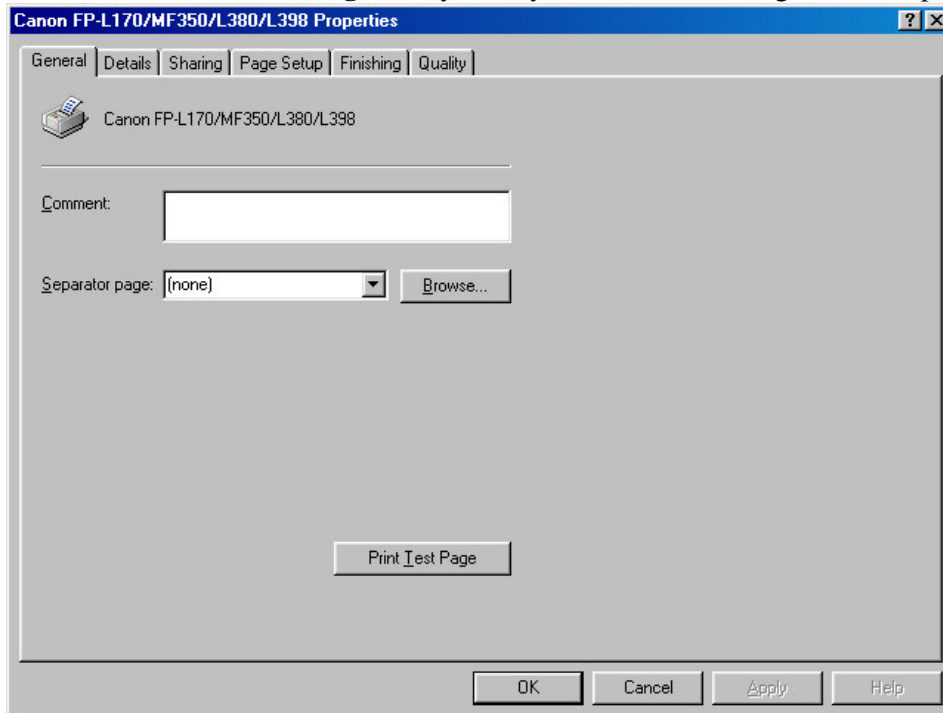
18. Check that at the 'Print to the following port' is the USB port.



19. Click on **'Page Setup'** Tab,
20. Under the page size, default is shown **'Letter'**. Change to **'A4'** and click **'Apply'**.
Click on **'General'** Tab



21. Click on **'Print Test Page'** and you may collect the Test Page from the printer.



END