

**CANON**

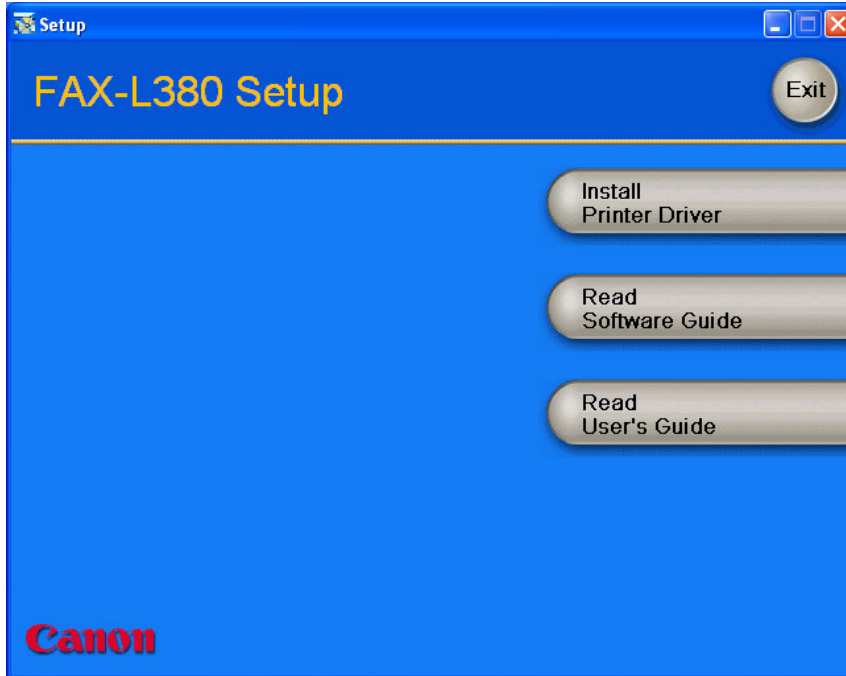
**FAX-L380**

**SOFTWARE**

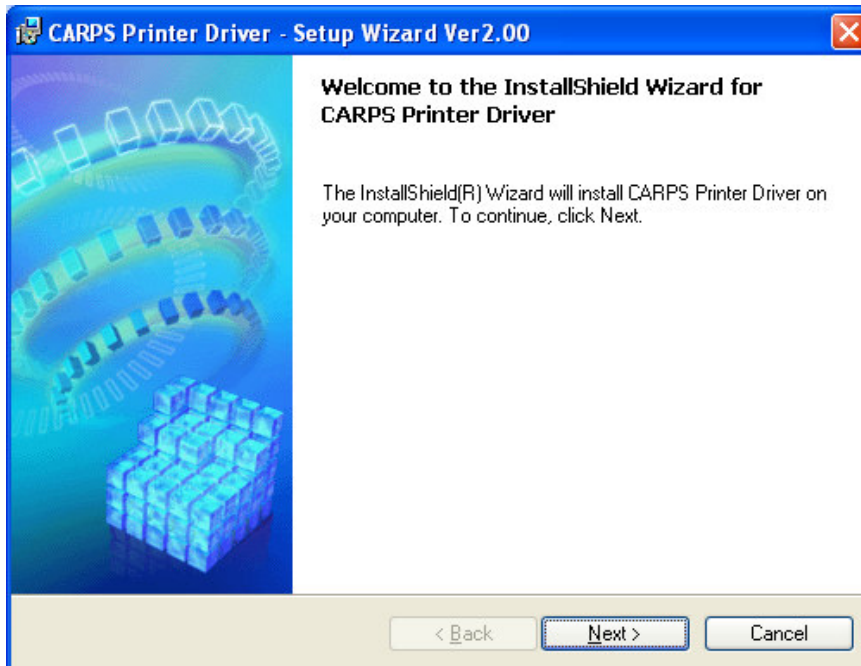
**MANUAL**

## For Windows XP installation

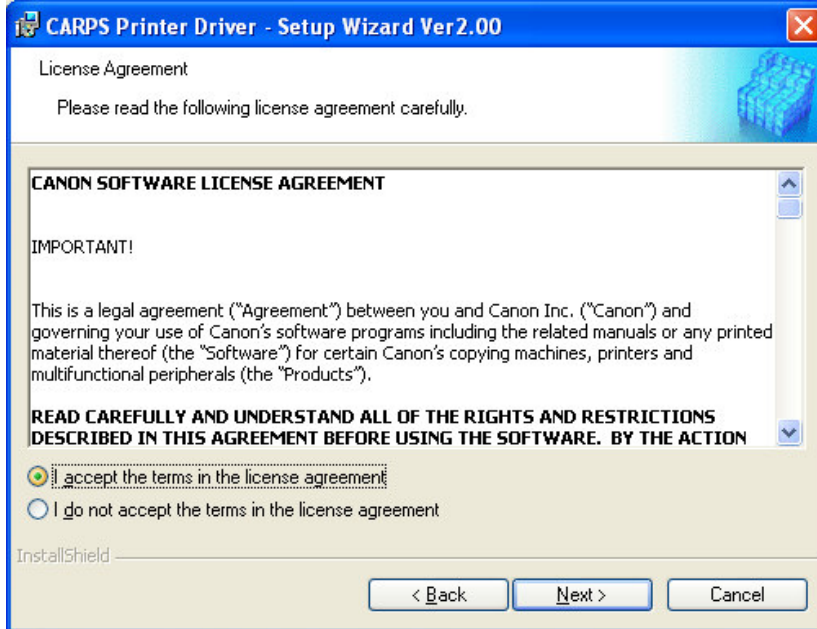
1. Make sure the **L380** is connected to your pc before you begin to install the driver.
2. Insert the CD Rom given into the CD Rom drive, it will auto startup. You will see the screen as shown below.
3. Click '**Install Printer Driver**' to continue.



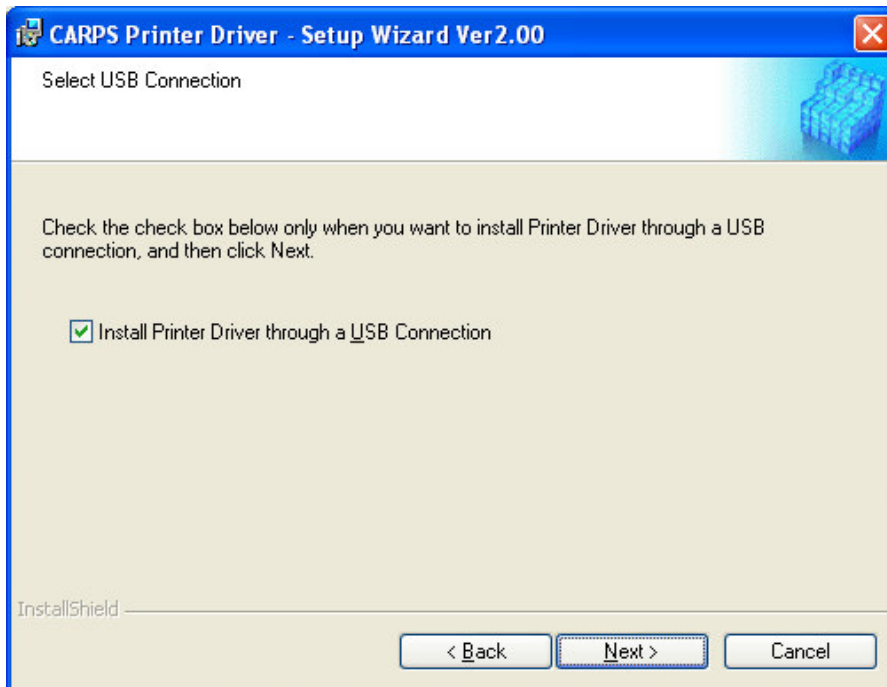
4. Click '**Next**'



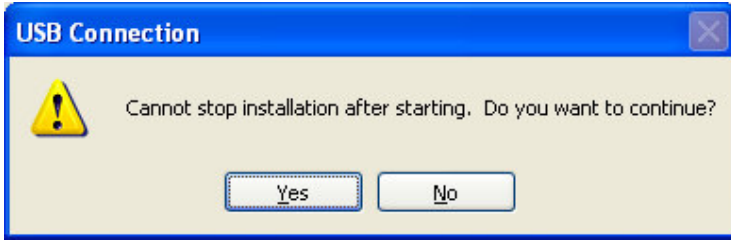
5. Check on 'I accept the terms in the license agreement' and click 'Next'.



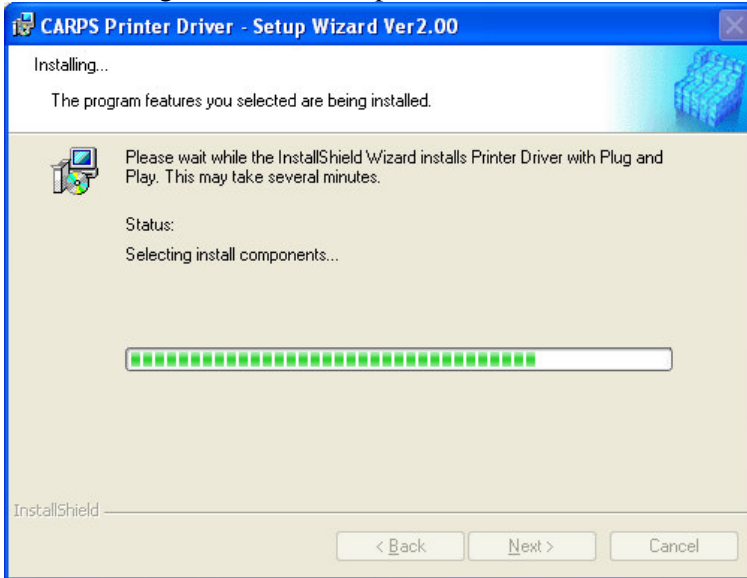
6. Click 'Next'.



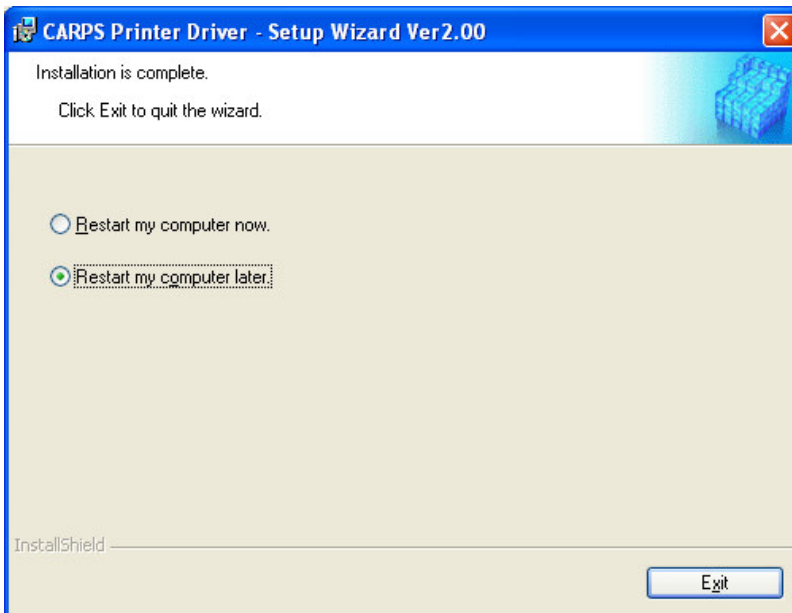
7. Click 'Yes' to continue.



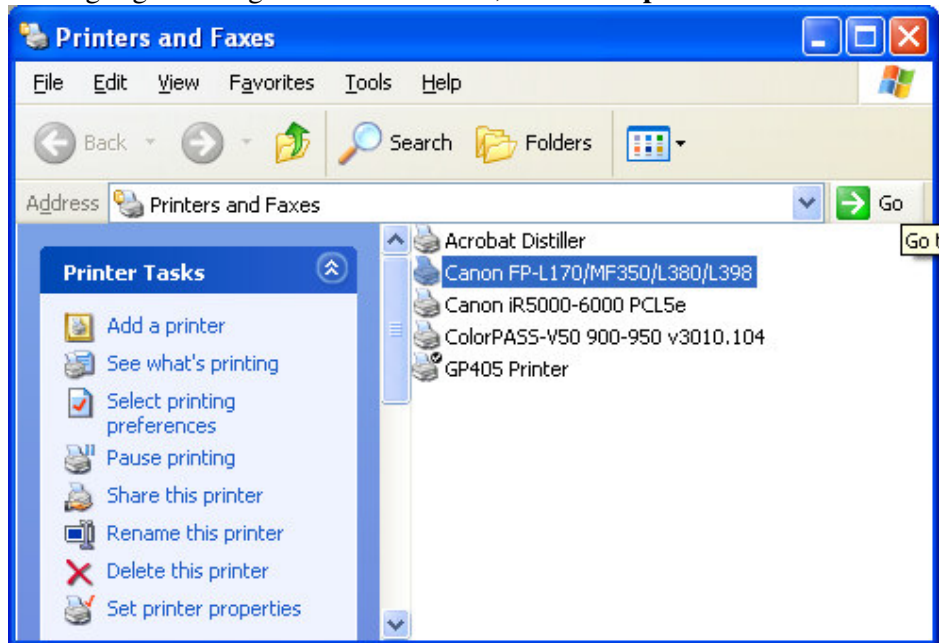
8. Is running the installation, please wait.



9. You can choose to 'restart my computer later' and click 'exit' to quit the wizard.



10. Click on **'Start'** button -> **'Control Panel'** -> **'Printers and faxes'**, you will see the Printer icon of L380 as shown below.
11. Highlight and right click on the icon, select **'Properties'**.



12. Click on **'Print Test Page'**. You may collect the Test page from your printer.

