

MP245

ALL-IN-ONE PHOTO PRINTER

Canon

Delighting You Always



THE VERSATILE ALL-IN-ONE SOLUTION WITH
PICTBRIDGE & ADVANCED SCANNING FEATURES

PRINT
SCAN
COPY

 **PIXMA**

THE FUN & EASY WAY TO GET SO MUCH MORE DONE

This elegant, compact All-In-One offers lab-quality photo printing, excellent copying, and high-resolution scanning. Yet it's easy to use and offers a variety of convenient shortcuts that make operation a pleasure. Resolution up to 4800x1200dpi and ink droplets as small as 2pl ensure excellent image quality and smooth gradation across the entire image. Scan at up to 1200x2400dpi for superb image reproduction. And you can work even faster with time-saving features such as Quick Start, Auto Scan Mode and a Self-Opening Paper Output Tray. Get more done quickly, and have more fun with the PIXMA MP245.

2pl
Technology

4800
Maximum
dpi


Auto Photo Fix

SCAN

1200x2400dpi



4x6"
borderless
approx.
45
sec.

FINE
Full-bleed Chromatography Inkjet
Nozzle Engineering



FINE Cartridge



Quick Start



D.C.G.
Processing Technology



Borderless Printing

 **ChromaLife 100+**



BASIC SPECIFICATIONS

Pages Per Minute (BK / Colour)	Copies Per Minute (BK / Colour)	Paper Handling (Plain Paper)
19 / 15	19 / 15	100 (Rear Tray)
Scanning Bit Depth (Colour)	Printer Size (mm)	Printer Weight (Net)
48 / 24bit Input / Output	444 x 331 x 155 (W x D x H)	5.5 kg

CONNECTIVITY



 **PictBridge**

CONSUMABLES

Included	Optional
810 Black PG-810	811 Color CL-811
810XL Black PG-810XL	811XL Color CL-811XL

HIGH QUALITY PRINTING

Superb Resolution & Excellent Detail

- High resolution printing – up to 4800x1200dpi for breathtaking prints
- Microscopic ink droplets as small as 2pl provide amazing detail and smooth gradation across the entire image

PIXMA MP245
Vibrant colours with almost no graininess



Colour ink-droplet size

min. 2pl

OTHER BRANDS
Graininess is conspicuous



Colour ink-droplet size

min. 5pl

Fast Photo Printing – Less Waiting, More Fun

- Print a beautiful, 4x6" borderless photo in just 45 seconds
- Fast document printing: 19ppm monochrome/15ppm colour



4x6" borderless photos

Borderless Printing – More Creative Options, More Impressive Photos

- Print beautiful borderless photos up to A4 size
- Borderless printing gives your photos even greater aesthetic resonance



Borderless A4 photo

The Hybrid System – Perfection Where Text And Images Overlap

- Pigment black ink ensures sharp black text and lines even when printed over an image
- The edges of photos and other graphic images are de-emphasised for a smooth, natural look



Sharp black text even on images





HIGH RESOLUTION SCANNING

- High resolution scans at 1200x2400dpi offer superb image quality
- Dual Colour Gamut Processing Technology ensures more faithful colour reproduction

Auto Scan Mode – Time-Saving Simplicity

- Automatically recognises the type of original, scans and then saves, making all the suitable settings at the touch of the scan button



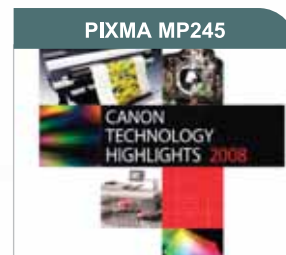
*Detects the type of media being scanned
(eg. photo or documents)*

EXCELLENT COPYING



Dual Colour Gamut Processing Technology – More Faithful Colour Reproduction

- Takes into account the type of original (photo or document) and paper (copy, photo or plain)
- Creates optimal balance between colour differences and gradation
- Eliminates the differences between scanned images and printed images



EASY-PHOTOPRINT EX – IT'S SO EASY TO DO SO MUCH MORE!

Print Photos Easily

Simply select paper size, layout and then print. Borderless photos are so easy!



Make An Album

Create your very own customised photo album using your favourite images. Just select a layout and the photos you want to include.

Create A Personalised Photo Calendar

Select a layout, dates, colours and fonts then add your best images. NEW! Now there are even more layouts and paper sizes from which to choose!



Print Fun Photo Stickers

Use photos taken with a digital camera, or any other images, to make one-of-a-kind photo stickers and have fun sticking them anywhere!



Get Creative With Layout Print

Choose from a variety of paper sizes and layouts. You can even add text to your photos.

Check Out The Library

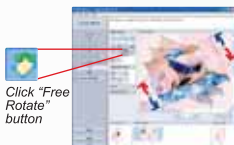
Access your albums and other projects created with Easy-PhotoPrint EX.

Auto Photo Fix

Auto Photo Fix recognises the type of photo taken – portrait, scenery, etc – then automatically adjusts the colour intensity, tone and brightness to provide better looking photo output.

NEW! Rotate Objects

Text and images can now be rotated freely so you can get the layout you really want.



MP NAVIGATOR EX – EXPANDED SCANNING CAPABILITIES



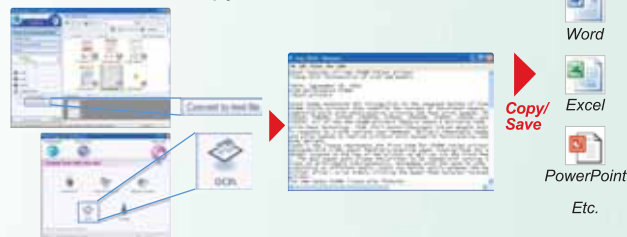
Classifying And Viewing Images In Categories

Automatically places scanned and imported images into categories, making them easy to locate.



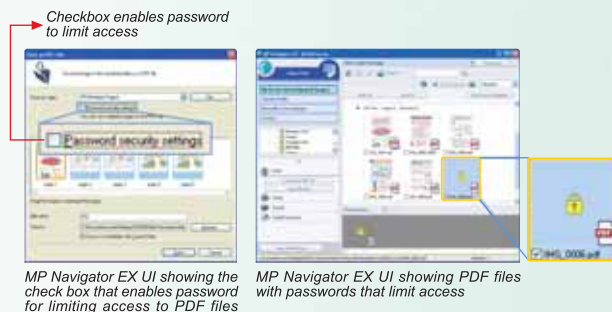
OCR Text Data Conversion

Take text from a scanned image and then use appropriate software to edit, copy, save or e-mail.



Add Security To Scanned PDF Files

Limit access to or restrict the printing of PDF files by giving them passwords; separate passwords can be created for a single file to give varied access.



Elegant Design – Classy, Curvy & Compact

- Gentle curves and sculpted edges give the PIXMA MP245 an elegant appearance that emphasises its compactness
- Metallic Silver shading and Piano Black trim create a soft yet sophisticated impression

Quick Start – Ready To Work, Right Away



- About 4 seconds after pressing the Power Button, you can begin operating the PIXMA MP245



Self-Opening Paper Output Tray – No Delays

- Paper Output Tray opens automatically before every print job
- Eliminates frustrating delays and paper jams

ENVIRONMENTALLY RESPONSIBLE

- Special functions such as 4-in-1 and 2-in-1 copying and other layout options reduce paper use
- Self-Opening Paper Output Tray prevents paper jams, which further conserves resources by lowering overall paper and energy consumption
- Conforms to the EU RoHS directive and the International Energy Star Program

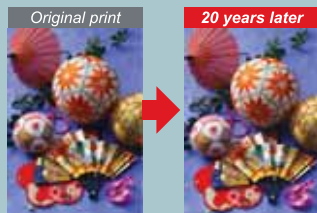
NEW!

CHROMALIFE100+ – MORE BRILLIANT IMAGES THAT CAN LAST UP TO 300 YEARS!*

- Canon's new dye-based inks and selected genuine Canon photo papers work in combination to create brilliant, fade-resistant prints that can last up to 300 years!
- Advanced dye-based inks combine with new photo papers to broaden colour space, resulting in more dynamic colour expression
- Expanded red areas are particularly brilliant and expressive
- Improved gas fastness also enhances print longevity
- Prints on plain paper are resistant to curling, thanks to a change in the ink formulation

* Under proper storage conditions. See specifications for details.

Gas Fastness
approx.
20 years



No noticeable colour changes occurred

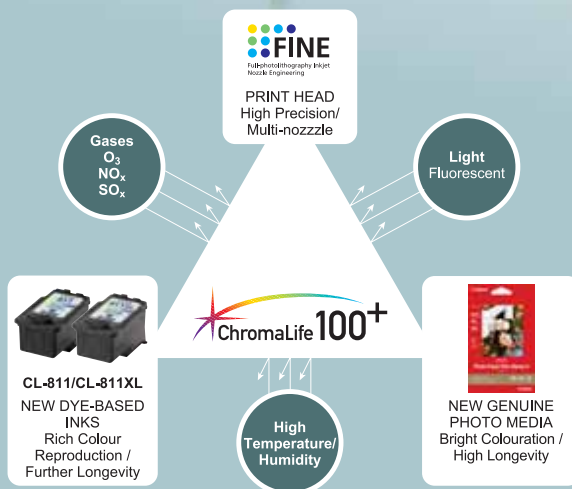


PHOTO PRINTING

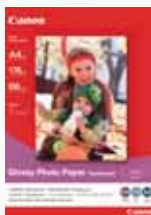
GLOSSY



PT-101
Photo Paper Pro Platinum
Ultra glossy premium quality photos
A4, 4x6"



PR-201
Photo Paper Pro II
Best quality photos; longer image life
A4, 4x6"



GP-501
Glossy Photo Paper
Economical, everyday photographs and snapshots
A4, 4x6"



PP-201
Photo Paper Plus Glossy II
Affordable paper for reprints & album prints
A4, 4x6"



PS-101
Photo Stickers
Make fun photo stickers of all your favourite photos
16 stickers/pcs

SEMI-GLOSSY



SG-201
Photo Paper Plus Semi-Gloss
Semi-gloss, satin surface finish
A4, 8x10", 4x6"



MP-101
Matte Photo Paper
Matte surface, great for art & craft projects
A4, 4x6"

BUSINESS PRINTING



HR-101N
High Resolution Paper
Business use (e.g. reports with charts and graphics)
A4

INK CARTRIDGES

PG-810
Pigment Black



CL-811
Dye Colour



PG-810XL
Pigment Black

Optional



CL-811XL
Dye Colour

Optional



FREE DOWNLOADS!

Visit Canon

CREATIVE PARK

www.canon.com/c-park

Download high-quality digital images, calendars and clip art for more creative fun.



Learn 3D paper craft or creative scrapbooking techniques.



Download greeting cards, stationary and envelopes.



Get tips on how to be more creative and get the most out of your printer.



SPECIFICATIONS

Product Name			PIXMA MP245
PRINT			
Printing Method			Bubble Jet Printing, Serial
Speed*1	Black Text	A4 Plain Paper / Max Speed	19ppm
	Colour	A4 Plain Paper / Max Speed	15ppm
	Photo (4x6")	PP-201 / Standard / Borderless	45secs
Resolution (dpi)*2			4800 x 1200dpi (max.)
Ink Droplet Size			2pl (min.)
Number of Nozzles			Total. 1472 nozzles
Cartridge Type			PG-810, CL-811 (PG-810XL, CL-811XL Optional)
Printable Width			Up to 203.2mm (8 inches) Borderless: Up to 216mm (8.5 inches)
Recommended Printing Area			Top margin: 31.2mm / Bottom margin: 32.5mm
Applicable Media Sizes			A4, Letter, Legal, A5, B5, Envelopes (DL, COM10), 4x6", 5x7", 8x10"
Borderless Photo			4x6" / 8x10" / A4
SCAN			
Technology			CIS Flatbed Scanner
Optical Resolution			1200 x 2400dpi
Selectable Resolution			19200 x 19200dpi
Line Scanning Speed (Without Data Transfer Time)	Grayscale		1.6 ms/line (300dpi)
	Colour		4.7 ms/line (300dpi)
Scanning Speed*3 (Reflectives)	A4 Colour / Default Resolution		approx. 19secs (300dpi)
	A4 B/W / Default Resolution		approx. 7secs (300dpi)
	4x6" Photo / Default Resolution		approx. 8secs (300dpi)
Scanning Bit Depth (Input / Output)	Grayscale		16/8bit
	Colour		48 / 24bit (RGB each 16 / 8bit)
Compatibility			TWAIN, WIA (Windows XP / Windows Vista)
Other Features			Push Scan
COPY			
Speed*4	Black Text	A4 Plain Paper / Max Speed	19cpm
	Colour	A4 Plain Paper / Max Speed	15cpm
Image Quality			Plain Paper: Fast, Standard / Other Paper: Fix
Density Adjustment			NA
Reduction / Enlargement			Fit-to-page
Multiple Copies (Black / Colour)			1 - 9 pages, 20 pages
Borderless Photo			4x6" / A4
PAPER HANDLING			
Rear Tray	Plain Paper		A4 = 100, Legal = 10
	High Resolution Paper (HR-101N)		A4 = 80
	Photo Paper Pro Platinum (PT-101)		A4 = 10, 4x6" = 20
	Photo Paper Pro II (PR-201)		A4 = 10, 4x6" = 20
	Photo Paper Plus Glossy II (PP-201)		A4 = 10, 4x6" = 20
	Photo Paper Plus Semi-Gloss (SG-201)		A4 / 8x10" = 10, 4x6" = 20
	Glossy Photo Paper "Everyday Use" (GP-501)		A4 = 10, 4x6" = 20
	Matte Photo Paper (MP-101)		A4 = 10, 4x6" = 20
	Photo Stickers (PS-101)		1
	T-Shirt Transfer (TR-301)		1
	Envelope		European DL and US Com. #10 = 10
Paper Weight			Plain Paper: 64-105 g/m ² , Canon specialty paper: max paper weight: approx. 300g/m ² (Photo Paper Pro Platinum PT-101)
SYSTEM REQUIREMENTS			
Windows			2000 SP4 / XP SP2 / Vista
Macintosh			OS X 10.3.9 - 10.5



Product Name		PIXMA MP245	
GENERAL			
Display		7 segment LED	
Interface		USB 2.0 Hi-Speed, PictBridge	
Canon Bundled Software		Canon Solution Menu (Windows only) MP Navigator EX Easy-PhotoPrint EX	
Operating Environment		Temperature: 5 - 35°C Humidity: 10 - 90% RH (no dew condensation)	
Power		AC100 - 240V, 50/60Hz	
Acoustic Noise*5	Print	approx. 46 dB(A)	
Power Consumption	Standby (scanning lamp is off) (USB connection to PC)	approx. 1.3W	
	OFF (USB connection to PC)	approx. 0.8W	
	Copying*6	approx. 12W	
Environment	Regulation	RoHS (EU), WEEE (EU), RoHS (China)	
	Eco-Label	Energy Star	
Weight		5.5kg	
Dimension (W x D x H)		444 x 331 x 155mm	

Specifications are subject to change without notice.

- *1. PPM print speed on plain paper is measured using Canon Standard Pattern. Photo print speed is based on the default setting using ISO/JIS-SCID N2 on 4x6" Photo Paper Plus Glossy II. Print speed may vary depending on system configuration, interface, software, document complexity, print mode, page coverage, type of paper used etc. and does not take into account data processing time on host computer.
- *2. Ink droplets can be placed with a pitch of 1/4800 inch at minimum.
- *3. Colour document scan speed is measured with ISO/IEC 24712 Newsletter. Scan speed indicates the time measured between pressing the scan button of the scanner driver and the on-screen status display turns off. Scan speed may vary depending on system configuration, interface, software, scan mode settings and document size etc.
- *4. CPM copy speed is measured based on "Fast" mode using Canon Standard Pattern on plain paper. Canon original copy speed is based on default setting using ISO/IEC 24712 Newsletter (printed by off-set method) on plain paper. Copy speed may vary depending on document complexity, copy mode, page coverage, type of paper used etc. and does not take into account warming up time.
- *5. When printing ISO/JIS-SCID N2 pattern on 4x6" Photo Paper Plus Glossy II using default settings.
- *6. When copying ISO/JIS-SCID N2 (printed by inkjet printer) on A4 size plain paper using default settings.

300-year life in an album:

<Criteria for estimation>

The permanence presented above is estimated using an accelerated dark storage test designed for silver-halide photos (ISO/FDIS18909). Samples are printed with an optical density of 1.0 (each black, cyan, magenta, yellow) and kept in a controlled environment of high temperature and 50% relative humidity. The test environment is designed to accelerate colour fading. The rate of the decrease in the optical density and the rate of yellow discolouration of the paper are measured. Finally, the results are extrapolated to the length of time when a printed image is kept in an environment of 23°C 50% RH.

30-year lightfastness:

<Criteria for estimation>

When displayed in a glass frame in a typical indoor space (estimating 500 lux / 10 hours per day) without direct sunlight. Estimates for lightfastness is conducted under the following test conditions. Light source: White fluorescent light 70,000 lux; Temperature: 24°C; Humidity: 60% RH; A 2mm thick glass is placed on the sample with an air gap between the glass and the sample during accelerated testing.

20-year gas fastness:

<Criteria for estimation>

Estimates for gas fastness is conducted under the following test conditions: Temperature (24°C) and humidity (60% RH) are controlled in an environment of mixed gases of O₃, NO_x and SO_x. The ratio of the gases is typical to indoor air composition (O₃: NO_x: SO_x = 3: 19: 1) with 100 times concentration in order to accelerate fading.

<Criteria for estimation of print longevity>

Estimates for image permanence is conducted using the Wilhelm Imaging Research, Inc. Endpoint criteria: Accumulated illuminance causes a monochromatic / reflective optical density loss of 20-35% (figures set respectively for each colour, starting density of 1.0). Accumulated illuminance causes a difference in colour balance of yellow, magenta and cyan (each component in composite black) of 12-18%.

<Tips>

Making your printed images last longer: Light, environmental gases, high temperature and humidity can accelerate colour fading. When displaying your photographs, avoid high intensity lighting and use glass-filtered frames. Photos stored in the dark, using archival quality albums or storage materials, will tend to last longer than photos that are exposed to light. Avoid high temperatures and high humidity to promote the image permanence of your photos.

Note for printing and displaying photos: The image permanence estimates presented above may vary depending on display/storage conditions. The expressed numbers of years estimates are the result of simulated, accelerated tests conducted by Canon Inc. and do not represent a product guarantee.





Delighting You Always

SOUTH & SOUTHEAST ASIA REGIONAL HEADQUARTERS

CANON SINGAPORE PTE. LTD.

1 HarbourFront Avenue #04-01 Keppel Bay Tower

Singapore 098632

Tel: 65-6799 8888 Fax: 65-6799 8882

www.canon-asia.com

BANGLADESH:

J.A.N. Associates

Tel: 880-2-8611444

Fax: 880-2-8610410

BRUNEI:

Interhouse Company

Tel: 673-2-653001

Fax: 673-2-653003

CAMBODIA:

Royal Cambodia Co. Ltd.

Tel: 855-23-4-28955

Fax: 855-23-7-22961

INDIA:

Canon India Pvt. Ltd.

Tel: 91-124-4160000

Fax: 91-124-4160011

www.canon.co.in

INDONESIA:

P.T. Datascrip

Tel: 62-21-6544515

Fax: 62-21-6544811

www.canon.co.id

MALAYSIA:

Canon Marketing (Malaysia) Sdn. Bhd.

Tel: 603-78446000

Fax: 603-78446048

www.canon.com.my

MALDIVES:

SIMDI Company

Tel: 960-3334421

Fax: 960-3334424

MYANMAR:

Accel International Company Ltd.

Tel: 95-1-202092/3/4

Fax: 95-1-202079

NEPAL:

International Electronics Concern
(P) Ltd.

Tel: 977-1-4421991

Fax: 977-1-4421909

PAKISTAN:

Mega Business Machines

Tel: 92-21-2276926-8

Fax: 92-21-2276930

PHILIPPINES:

Canon Marketing (Philippines) Inc.

Tel: 632-8849000

Fax: 632-8109797

www.canon.com.ph

SINGAPORE:

Canon Singapore Pte. Ltd.

Tel: 65-6799 8888

Fax: 65-6221 7577

www.canon.com.sg

SRI LANKA:

Metropolitan Computers (Pvt) Ltd.

Tel: 94-11-2437797

Fax: 94-11-2685322

THAILAND:

Canon Marketing (Thailand)

Co. Ltd.

Tel: 66-2-3449999

Fax: 66-2-3449967

www.canon.co.th

VIETNAM:

Canon Singapore Pte. Ltd.

Ho Chi Minh City Representative

Office & Showroom

Tel: 84-8-8200466

Fax: 84-8-8200477

www.canon.com.vn

Hanoi Representative Office

Tel: 84-4-7711677

Fax: 84-4-7711678

www.canon.com.vn

DEALER'S STAMP



0125W375