

# PIXMA MX347/MX357

INKJET OFFICE ALL-IN-ONE

**Canon**  
Delighting You Always

- PRINT
- COPY
- SCAN
- FAX
- Wi-Fi



MX347



MX357



**Affordable Business Efficiency,  
Convenient Wireless Connectivity**

# PIXMA MX347/MX357

INKJET OFFICE ALL-IN-ONE

- PRINT
- COPY
- SCAN
- FAX
- Wi-Fi



MX347



MX357

## Before You Buy, Demand To Know The True Speed Of That Inkjet Printer

You can't accurately compare the speed of inkjet printers if there are different test methods. Unless the universal ISO Print/Copy Speed Measurement standards are used, it's impossible to know which printer is faster: one that prints 10 images per minute (ipm) or one that prints 30 pages per minute (ppm). Canon has adopted the universal ISO standards for inkjet printers to ensure that you always get the performance you expect right out of the box. Demand the ISO standard – it's the only way to know the real speed of your inkjet printer.

**Affordable Business Efficiency,  
Convenient Wireless Connectivity**

# Get Set For Success

This pair of high-performance office All-In-One printers are set to transform your workflow. Both the PIXMA MX347 and MX357 give you the power to print, copy, scan or fax – quickly and efficiently. Wireless network capabilities, a 30-page ADF and PictBridge compatibility make the job even easier. Factor in a sophisticated, highly functional design and some of Canon's most creatively advanced software, and you have all the speed, quality and convenience you need to succeed. With the PIXMA MX347 and MX357 – you're all set for success!

## Auto Scan Mode with Auto Document Fix

Detects document types, and saves with optimal settings and file formats automatically.

## High-Quality 2400dpi CIS Scanner



## Fax Technology – Super G3

30-page ADF

## \*2.5-inch Color LCD Display

\*PIXMA MX357 only



## Quick Start

Start operations within seconds of powering on.



## Wired\* / Wireless LAN



Print / scan from anywhere in your house / office.

\*PIXMA MX357 only

## Self-Opening Paper Output Tray



## Photo-Lab Quality

Print up to 4800dpi with microscopic ink droplets as small as 2pl. 4x6" borderless photo printing in approx. 43 secs.



10x15cm(4x6")  
borderless  
approx.  
43 sec.



## Print PDF Files\*<sup>11</sup> via USB Created By Scan to Memory / MP Navigator EX Software

PIXMA MX357 only

## Direct Photo Printing (JPEG format)



Memory Card\*  
\* PIXMA MX357 only



USB  
Flash Memory  
Or  
Bluetooth\*  
(Optional BU-30)

## ISO Standard Speed

Default print speed on plain paper for business-quality documents.

### DOCUMENT PRINTING\*<sup>1</sup> (ESAT)

8.4ipm 4.8ipm

Mono Color

Measured by ISO / IEC 24734 Standard

### COPY SPEED\*<sup>5</sup>

7.0cpm 3.7cpm

Mono Color

Measured by ISO / IEC 24735 Standard

### FCOT\*<sup>5</sup> (First Copy Out Time)

31secs

Color

## ChromaLife100<sup>+</sup>

Long-lasting, lab-quality photo prints using Canon's genuine ink & paper system.



## Hybrid System

Combines dye-color and pigment-black inks for the best results on glossy photo or plain paper.

## Work Without Wires

### Wireless LAN & Ethernet – Convenient Network Printing



Ethernet

- Supports both Wireless LAN and Ethernet\*, so multiple users can enjoy wired or wireless connections
- Printing and scanning functions can be shared by multiple computers anywhere in the office
- Use optional Bluetooth adapter (BU-30) to print wirelessly from a camera phone or PDA

### Easy Wireless LAN Setup – Choose From Three Simple Methods



- Search for wireless Access Point
- Wi-Fi Protected Setup (WPS) uses the Push Button method or PIN Code method to make settings\*\*
- Windows Connect Now (WCN) for Windows Vista and Windows 7 users transfers wireless settings easily using USB flash memory

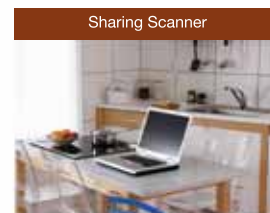


\*PIXMA MX357 supports both Ethernet & WiFi connections;  
PIXMA MX347 supports WiFi only

\*\*Requires router with WPS feature



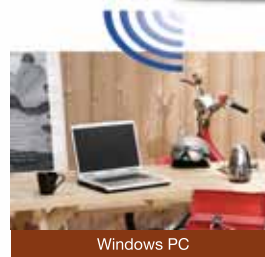
Sharing Printer



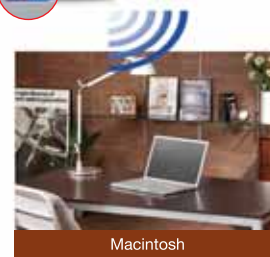
Sharing Scanner



PIXMA MX357



Windows PC



Macintosh



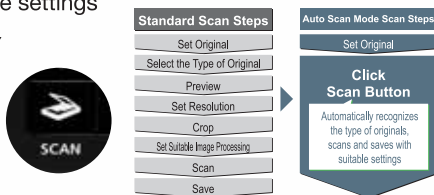


## Excellent Scanning Capabilities

### Convenient, High-Resolution Scanning

- High-resolution scans at up to 1200x2400dpi ensure superb image quality
- Save scanned data directly to a USB flash drive or memory card\*
- With a single click, Auto Scan Mode recognizes the type and format of the original
- Once the original is identified, it scans and saves using all the appropriate settings

\*PIXMA MX357 only

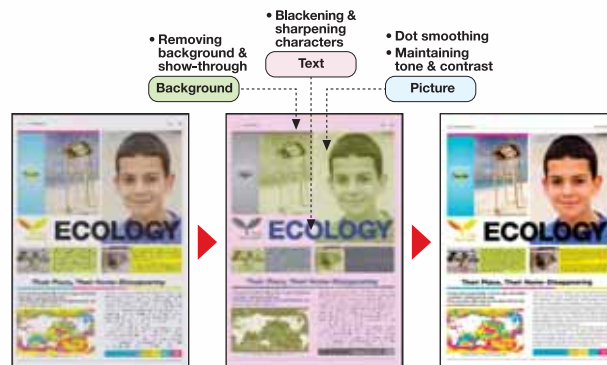


### Automatic Document Feeder (ADF) Speeds Up Scanning

- Scan up to 30 A4 pages at once – simply place them in the ADF
- ADF scans can be saved in PDF, JPEG, TIFF or the new Compact PDF format

### New! Auto Document Fix – Superior Documents Automatically

- Auto Document Fix is activated in Auto Scan Mode and provides area-by-area analysis and correction of the scanned document image



### Advanced PDF Filing – Scan & File Bulky Documents With Ease

- Automatically places scanned and imported images/documents into categories; create searchable, multi-page files
- OCR Text Data Conversation – allows you to take text from a scanned image then edit, copy, save or e-mail
- Added security (Windows only) – restrict or limit access to files by giving them passwords
- Stitch Assist – it's easy to “stitch” several scanned sections of an original into a complete image
- Eliminates “gutter shadows” that sometimes occur when scanning books and magazines
- Automatically rotates documents for correct orientation; corrects document slant
- Operation panel is easily accessible, even when scanning thick books



## Fax To The Max

### **New!** Save Faxes To USB Flash Or Memory Cards

- Store up to 50 pages in the reception memory when out of paper or ink
- Save fax data to a USB Flash Drive or a memory card\* and upload to your computer for viewing



\*PIXMA MX357 only

### **New!** Register Or Modify User Info From A Computer

- Register or edit user information via your Windows or Mac computer with the new **Speed Dial Utility**
- Store up to 20 numbers for easy fax dialing

### Fast, High-Quality Faxes

- Super G3 high-speed faxing – saves time and reduces phone line charges
- Fax an A4-size document in approximately three seconds
- Use the ADF to fax up to 30 A4 pages continuously
- Transmit in high-resolution Extra Fine Mode for sharp details and easy text readability



### Security Features Eliminate Junk Faxes & Misdialed Numbers



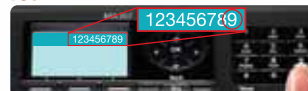
- Junk Fax Countermeasure – allows you to reject faxes based on selectable parameters: Caller ID, Speed Dial, blocked number, etc.
- Number Re-Entry – Confirms recipient; if numbers are different, fax is not sent

#### Functions that prevent a FAX from being sent to the wrong location:

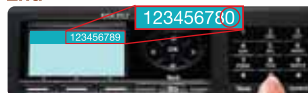
##### FAX number re-entry

The sender will be asked to re-enter the recipient's number again for confirmation

##### 1st



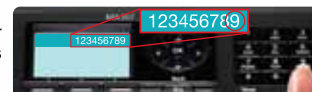
##### 2nd



In case the 2nd number is different from the 1st one, the FAX isn't sent

##### Check RX FAX info

Checks whether the dialed number and the recipient's number are the same. If not, the FAX isn't sent



Won't send FAX

FAX information  
012345678



## High-Quality Printing

### FINE™ Technology For Superb Photo & Document Printing



- FINE™ print head offers 4800x1200dpi resolution for brilliant prints
- 2pl ink droplets ensure exceptional accuracy and detail

#### PIXMA MX347/MX357

Vibrant colors with almost no graininess



Color ink-droplet size

min. 2pl

#### OTHER BRANDS

Graininess is conspicuous



Color ink-droplet size

min. 5pl

### Hybrid System – Dye Colors & Pigment-Black Ink For Superior Text And Images

- Pigment-black ink ensures sharp, easily readable text even when printed over an image
- Dye-based ink gives photos and images a smoother, more natural look



Sharp black text even on images

## Copies Look Original

### Quality And Convenience

- Canon's most advanced copying technologies ensure superb reproduction of photos and documents
- Dual Color Gamut Processing provides exceptional color accuracy



Original



Make a copy

Copy



Make a copy again

Second-Generation Copy



Color Reproduction  
Text Readability

- Punch Hole Removal and Frame Erase elevate copy quality
- Binding Margin Copy ensures that no part of the text or image is covered when pages are bound
- Automatic Document Feeder (ADF) allows you to copy multiple documents more quickly and efficiently



## Useful Office Productivity Features

### Efficient, Cost Saving & Environment Friendly

- 4-in-1, 2-in-1 and other layout options help to save paper
- Self-opening paper tray prevents jams and paper wastage
- Conforms to RoHS directive & supports the latest Energy Star program



ECO SPEC	4-in-1 / 2-in-1 copying and printing	Quick Start	Self-opening Tray	3-color (RGB) LED	Standby Mode
PIXMA MX357	•	•	•	•	Approx. 2.7W
PIXMA MX347	•	•	•	•	Approx. 2.2W

### Intuitive Operation Panel & 2.5-Inch LCD Display\*

- Operation panel groups buttons according to function for enhanced operability
- 2.5-inch color LCD display simplifies operation and is ideal for viewing memory card images



\*PIXMA MX357 only

### Quick Start – You Won't Have To Wait

- Ready to operate within a few seconds of pressing the power button
- Eliminates frustrating delays and increases overall workflow



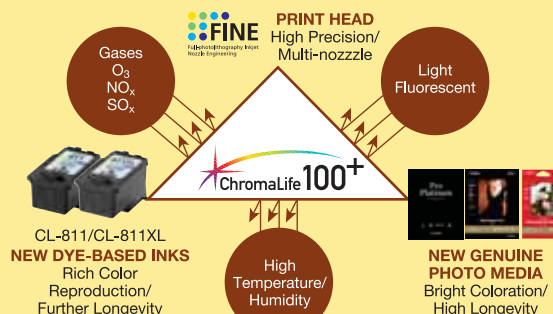
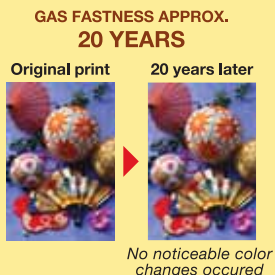
### A Great-Looking Design That Works

- Titanium White mirror finish with Matte Black creates an air of sophistication
- When not in use, the ADF can be folded down for a sleeker profile



## ChromaLife100<sup>+</sup> – Your Photos Will Look Beautiful For Generations!

- Fade-resistant prints can last over 300 years\*, thanks to the unique combination of Canon's dye-based inks and genuine photo papers
- Prints are resistant to fading from normal air exposure for up to 20 years
- Canon Photo Papers not only last longer, they also expand the total color area so your photos are more vivid and naturally beautiful



\*Under proper storage conditions; see specifications for details



## MP NAVIGATOR EX – EXPANDED SCANNING CAPABILITIES

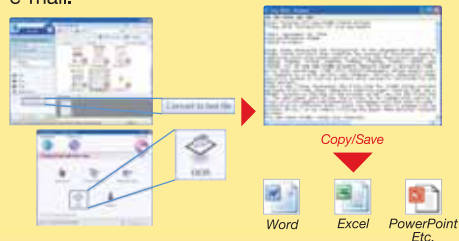
### Classifying And Viewing Images In Categories

Automatically places scanned and imported images into categories, making them easy to locate.



### OCR Text Data Conversion

Take text from a scanned image and then use appropriate software to edit, copy, save or e-mail.



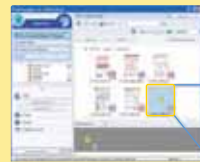
### Add Security To Scanned PDF Files

Limit access to or restrict the printing of PDF files by giving them passwords; separate passwords can be created for a single file to give varied access.

Checkbox enables password to limit access



MP Navigator EX UI showing the checkbox that enables password for limiting access to PDF files



MP Navigator EX UI showing PDF files with passwords that limit access

## EASY-PHOTOPRINT EX – THE EASY WAY TO MAKE MORE OF YOUR PHOTOS

### Easy Photo Printing

Choose paper size, layout and print; can also select borderless prints.



### Photo Calendar

Simply choose the layout, colors and fonts then add your timeless images.



### Photo Album

Select your images and a layout to create a one-of-a-kind photo album.

### Layout Print

Express your creativity with a variety of paper sizes and layouts; you can even add text to your photos.

### Auto Photo Fix II – Professional Image Enhancement



- Extremely precise color balance and brightness correction



Original (underexposed)



Brightness optimized

- Backlit faces are properly exposed without compromising background

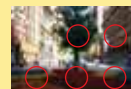


Original (underexposed)



Faces optimized

- Brightness is optimized for individual areas within the image



Original (underexposed)



Scene optimized

- Distinguishes between night scenes and underexposed images



Original (underexposed)

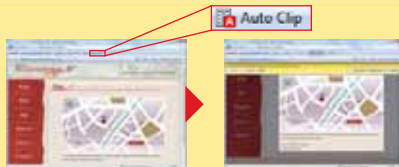


Night scene optimized

## EASY-WEBPRINT EX – EDIT WEB PAGES TO SAVE SPACE, TIME & PAPER

### Auto Clipping

Automatically clip the main portion of the web page to print.



### Multiple-Page Clipping

Clip, combine, edit and print material from several web pages.



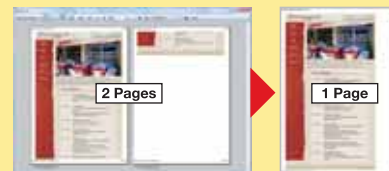
### Text Enlargement

Adjust text size to improve readability.



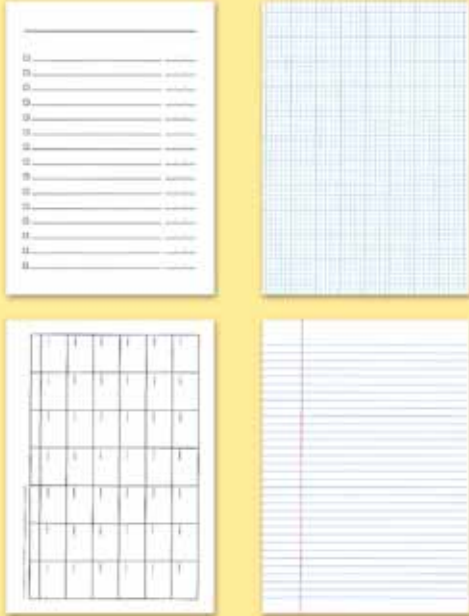
### Save Paper

Options such as Reduced Page To Print, Multi-Column Printing & Duplex Printing all lower paper usage.



## BUILT-IN TEMPLATE PRINTING – A GREAT WAY TO RECYCLE PAPER

- Choose from 11 templates, including weekly or monthly schedules, notepad sheets, checklists or even ruled square sheets



## INK CARTRIDGES

PG-810  
Pigment  
Black



CL-811  
Dye Color



PG-810XL  
Pigment  
Black



Optional

CL-811XL  
Dye Color



Optional

## BUSINESS PRINTING



### HR-101N High Resolution Paper

This paper is perfect when you want to create eye-catching graphics and winning reports. It optimizes output resolution, creating near-photographic images every time.

- 110g/m<sup>2</sup>
- A4, A3, A3+

## PHOTO PRINTING

### Glossy



### PT-101 Photo Paper Pro Platinum (Super High Gloss)

The ultra-glossy photo paper. Make your prints come alive in vibrant, vivid colors, thanks to an expanded red spectrum. Photo Paper Pro Platinum offers a paper thickness unrivalled among commercial photo papers, and exceptional print quality for truly unforgettable photos.

- 300g/m<sup>2</sup>
- 4x6", A4, A3, A3+, 8x10"



### PR-201 Photo Paper Pro II (Super High Gloss)

This professional high-gloss photo paper produces truly remarkable, high-quality photo prints that are virtually indistinguishable from professional lab results.

- 245g/m<sup>2</sup>
- 4x6", A4, A3, A3+



### GP-501 Glossy Photo Paper

An economical choice for great prints, this vibrant, glossy paper gives you crisp, clear pictures that are high quality but lower cost!

- 170g/m<sup>2</sup>
- 4x6", A4



### PP-201 Photo Paper Plus Glossy II

Photo Paper Plus Glossy II yields a glossy finish and exceptionally rich colors, giving your images the look and feel of traditional photographs.

- 260g/m<sup>2</sup>
- 4x6", A4, A3, A3+



### PS-101 Photo Stickers

Make fun photo stickers of all your favorite photos. Perfect for making memories on the go!

- 190g/m<sup>2</sup>
- Stickers (5 sheets/pack) (16 photo stickers/sheet)

### Semi-Glossy



### SG-201 Photo Paper Plus Semi-Gloss

The velvety texture of this semi-gloss paper gives your photos an amazingly rich quality. It produces vibrant images with low glare and a soft glossy finish for photo-lab-quality prints right at home.

- 270g/m<sup>2</sup>
- 4x6", A4, A3, A3+, 8x10", 10x12", 14x17"

### Matte



### MP-101 Matte Photo Paper

Here's an ideal paper for superior results. This matte-finish, heavyweight paper will infuse your images with remarkably vibrant color every time. Great for arts & crafts projects.

- 170g/m<sup>2</sup>
- 4x6", A4, A3

# Specifications

PRINT			PIXMA MX357 / MX347	
Speed *1	Black & White:	ESAT	Approx. 8.4ipm	
	A4 Plain Paper			
	Color:	ESAT	Approx. 4.8ipm	
	A4 Plain Paper			
	Photo (4x6"):	PP-201 / Standard / Borderless	43secs	
Resolution (dpi)*2			4800 x 1200dpi (max.)	
Min. Ink Droplet Size			2pl (min.)	
Number of Nozzles			1472	
Cartridge Type			PG-810, CL-811 (PG-810XL, CL811XL Optional)	
Printable Width			Up to 203.2mm (8-inch)    Borderless: Up to 216mm (8.5-inch)	
Recommended Printing Area			Top margin: 31.2mm / Bottom margin: 32.5mm	
Applicable Media Sizes			A4, Letter, Legal, A5, B5, Envelopes (DL, COM10), 4x6", 5x7", 8x10"	
Borderless Photo			4x6" / 8x10" / A4	
SCAN				
Technology			CIS	
Optical Resolution*3	Flatbed		1200 x 2400dpi	
	ADF		600 x 600dpi	
Selectable Resolution			19200 x 19200dpi	
Line Scanning Speed (Without Data Transfer Time)	Grayscale:		1.6 ms/line (300dpi)	
	Color:		4.8 ms/line (300dpi)	
Scanning Speed*4 (Reflectives)	A4 Color / Default Resolution		Approx. 19secs	
Scanning Bit Depth (Input / Output)	Grayscale:		16/8bit	
	Color:		48/24bit (RGB each 16/8bit)	
Maximum Document Size	Flatbed		A4 / LTR (216 x 297mm)	
	ADF		A4 / LTR / LGL	
Other Features			Scan and Save to USB Flash Drive / Memory Card (PIXMA MX357 only); Scan and Save as "Compact PDF"	
COPY				
Speed*5	Color:	FCOT	31secs	
	A4 Plain Paper			
	Black Text (ADF):	ESAT	7.3ipm	
	A4 Plain Paper			
	Color (ADF):	ESAT	3.4ipm	
	A4 Plain Paper			
Image Quality			3 Positions (Fast, Standard, High)	
Density Adjustment			9 Positions, Auto intensity (AE copy)* *Flatbed only	
Reduction / Enlargement			25% – 400%, Fit-to-page (Flatbed only)	
Multiple Copies (Black / Color)			Max. 99 Pages	
Maximum Document Size			A4 / LTR (216 x 297mm)	
			ADF: A4 / LGL	
FAX				
Type			Desktop Transceiver (Super G3 / Color Communication)	
Applicable Line			PSTN (Public Switched Telephone Network)	
Resolution	Black Text		8pels/mm x 3.85lines/mm (Standard), 8pels/mm x 7.7lines/mm (Fine), 300 x 300dpi (Extra Fine)	
	Color		200 x 200dpi	
Modem Speed			Max. 33.6kbps	
Transmission Speed*6	Black Text		Approx. 3sec (33.6kbps)	
	Color		Approx. 1min (33.6kbps)	
Compression	Black Text		MH, MR, MMR	
	Color		JPEG	
Gradation	Black Text		256 Levels	
	Color		24bit Full Color (RGB each 8bit)	
ECM (Error Correction Mode)			ITU-T T.30 Compatible	
Automatic Dialing	One Touch Speed Dialing		N.A.	
	Coded Speed Dialing		Max. 20 Locations	
	Group Dialing		Max. 19 Locations	
Transmission / Reception Memory*7			Approx. 50 Pages	
Other Features			Save Faxes in Memory to USB Flash Drive, Memory Transmission, F/T Changing (Manual), Answering Machine Connectivity, Remote Reception, Redial, Caller Rejection, Fax Reception Reject, Fax Number Re-entry, Check RX Fax Info	
PC-FAX				
Type			Windows: via FAX modem (in MFP), Mac: N/A	
Destination Number, Black / Color			1 Location, B/W transmission only	

NETWORK	
Wired LAN	Network Type Transmission System
Wireless LAN	Network Type
	Frequency Band
	Channel
	Transmission System
	Data Rate
	Range
	Security
CAMERA DIRECT	
Compatible Digital Cameras	
File Formats	
PAPER HANDLING	
Rear Tray	Plain Paper
	High Resolution Paper (HR-101N)
	Photo Paper Pro Platinum (PT-101)
	Photo Paper Pro II (PR-201)
	Photo Paper Plus Glossy II (PP-201)
	Photo Paper Plus Semi-Gloss (SG-201)
	Glossy Photo Paper "Everyday Use" (GP-501)
	Matte Photo Paper (MP-101)
	Photo Stickers (PS-101)
	T-Shirt Transfer (TR-301)
	Envelope
ADF	Plain Paper
PAPER WEIGHT	
Rear Tray	
SYSTEM REQUIREMENTS	
Windows	
Macintosh	
GENERAL	
Display	
Quick Start	
Interface	
Canon Bundled Software	
Operating Environment	
Power	
Acoustic Noise* <sup>9</sup>	Print
Power Consumption	Standby (scanning lamp is off) (USB connection to PC)
	OFF (USB connection to PC)
	Copying* <sup>10</sup>
Environment	Regulation
	Eco-Label
Weight	
Dimensions (W x D x H)	

Specifications are subject to change without notice.

\*1: Document print speeds are the averages of ESAT in Office Category Test for the default mode, ISO/IEC 24734, excluding time to print the first set.  
Photo print speed is based on the default setting using ISO/JIS-SCD N2 on Photo Paper Plus Glossy II and does not take into account data processing time on host computer.  
Print speed may vary depending on system configuration, interface, software, document complexity, print mode, page coverage, type of paper used, etc.  
\*2: Ink droplets can be placed with a pitch of 1/4800-inch at minimum.  
\*3: Optical resolution is a measure of max. hardware sampling resolution based on ISO14473 standard.  
\*4: Color document scan speed is measured with ISO/IEC 24735 Annex C Test Chart A.  
Scan speed indicates the time measured between pressing the scan button of the scanner driver and when the on-screen status display turns off.  
Scan speed may vary depending on system configuration, interface, software, scan mode settings and document size, etc.  
\*5: ADF copy speeds are the averages of ESAT in General Performance Test for the default simplex mode, ISO/IEC 24735, (ESAT: excluding time to copy the first set.)  
Copy speed may vary depending on document complexity, copy mode, page coverage, type of paper used, etc. and does not take into account warming up time.  
\*6: Black & white document fax transmission speed is based on default setting using ITU-T No.1 chart. Color document fax transmission speed is based on default setting using Canon Color Fax Test Sheet. Actual transmission speed may vary depending on document complexity, fax settings at receiving end and line conditions, etc.  
\*7: Page count is based on ITU-T No.1 chart or Canon FAX Standard Chart No.1.  
\*8: Transmission rate will be limited to IEEE802.11g and operate in the 2.4GHz frequency band.  
\*9: When printing ISO/JIS-SCD N2 pattern on 4x6" Photo Paper Plus Glossy II using default settings.  
\*10: When copying ISO/JIS-SCD N2 (printed by inkjet printer) on A4 size plain paper using default settings.  
\*11: New "PDF Direct Printing" supports PDF files created only by the printer's built-in "scan to memory" feature, or the bundled MP Navigator EX software. Encrypted PDF files and Duplex Printing are not supported.

\*CHROMALIFE100+ PROPER STORAGE CONDITIONS

300-year life in an album:  
<Criteria for estimation>  
The permanence presented above are made using an accelerated dark storage test designed for silver-halide photos (ISO/FDIS18909). Samples are printed with an optical density of 1.0 (each black, cyan, magenta, yellow) and kept in a controlled environment of high temperature and 50% relative humidity. The test environment is designed to accelerate color fading. The rate of the decrease in the optical density and the rate of yellow discoloration of the paper are measured. Finally, the results are extrapolated to the length of time that a printed image is kept in an environment of 23°C 50% RH.  
30-year lightfastness:  
<Criteria for estimation>  
When displayed in a glass frame in a typical indoor space (estimating 500lux / 10hours per day) without direct sunlight, Estimates for lightfastness are made under the following test conditions. Light source: White fluorescent light 70,000lux; Temperature: 24°C; Humidity: 60% RH; A 2mm thick glass is placed on the sample with an air gap between the glass and the sample during accelerated testing.  
20-year gas fastness:  
<Criteria for estimation>  
Estimates for gas fastness are made under the following test conditions: Temperature (24°C) and humidity (60% RH) are controlled in an environment of mixed gases of O3, NOx and SOx. The ratio of the gases is typical to indoor air composition (O3: NOx: SOx=3: 19: 1) with 100-times concentration in order to accelerate fading.  
<Criteria for estimation of print longevity>  
Estimates for image permanence are made using the Wilhelm Imaging Research, Inc. Endpoint criteria: Accumulated Illuminance causes a monochromatic / reflective optical density loss of 20-35% (figures set respectively for each color, starting density of 1.0). Accumulated Illuminance causes a difference in color balance of yellow, magenta and cyan (each component in composite black) of 12-18%.  
<Tips>  
Making your printed images last longer: Light, environmental gases, high temperature and humidity can accelerate color fading. When displaying your photographs, avoid high-intensity lighting and use glass-filtered frames. Photos stored in the dark, using archival quality albums or storage materials, will tend to last longer than photos that are exposed to light. Avoid high temperatures and high humidity to promote the image permanence of your photos.  
Note: The image permanence estimates presented above may vary depending on display / storage conditions. The expressed numbers of years estimates are the result of simulated, accelerated tests conducted by Canon Inc., and do not represent a product guarantee.





Delighting You Always

## South & Southeast Asia Regional Headquarters

### Canon Singapore Pte. Ltd.

1 HarbourFront Avenue #04-01 Keppel Bay Tower  
Singapore 098632  
Tel: 65-6799 8888 Fax: 65-6799 8882  
www.canon-asia.com

### Bangladesh:

J.A.N. Associates  
Tel: 880-2-8611444  
Fax: 880-2-8610410

### Brunei:

Interhouse Company  
Tel: 673-2-653001  
Fax: 673-2-653003

### Cambodia:

Cemtes (Cambodia) Pte Ltd  
Tel: 855-023-214229  
Fax: 855-023-217357

### India:

Canon India Pvt. Ltd.  
Tel: 91-124-4160000  
Fax: 91-124-4160011  
www.canon.co.in

### Indonesia:

P.T. Datascrip  
Tel: 62-21-6544515  
Fax: 62-21-6544811  
www.canon.co.id

### Malaysia:

Canon Marketing (Malaysia) Sdn. Bhd.  
Tel: 603-78446000  
Fax: 603-78450505  
www.canon.com.my

### Maldives:

SIMDI  
Tel: 960-324819  
Fax: 960-318433

### Myanmar:

Myanmar Golden Rock International  
Co., Ltd.  
Tel: 95-1-202092/3/4  
Fax: 95-1-202079

### Nepal:

International Electronics Concern (P) Ltd.  
Tel: 977-1-4421991  
Fax: 977-1-4421909

### Pakistan:

Mega Business Machines  
Tel: 9221-34302026-7  
Fax: 9221-34386308

### Singapore:

Canon Singapore Pte. Ltd.  
Tel: 65-6799 8888  
Fax: 65-6221 7577  
www.canon.com.sg

### Sri Lanka:

Metropolitan Computers (Pvt) Ltd.  
Tel: 94-11-2437797  
Fax: 94-11-2448980

### Thailand:

Canon Marketing (Thailand)  
Co. Ltd.  
Tel: 66-2-3449999  
Fax: 66-2-3449910  
www.canon.co.th

### Vietnam:

Canon Singapore Pte. Ltd.

Ho Chi Minh City Representative  
Office & Showroom  
Tel: 84-8-38200466  
Fax: 84-8-38200477  
www.canon.com.vn

Hanoi Representative Office  
Tel: 84-4-7711677  
Fax: 84-4-7711678

### Dealer's Stamp

All information contained in this brochure is correct at the time of printing.

