

LEGRIA

Great movies begin with great images

Canon

Delighting You Always

Bigger HD Lens,
captures smallest details



Dual Flash
Memory Camcorder



LEGRIA HF S10



LEGRIA HF S100



LEGRIA HF20



LEGRIA HF200

Experience the brilliance of
Full High Definition the way it was
meant to be with Canon's exciting
line-up of LEGRIA Dual Flash Memory
HD Camcorders.



Clarity Beyond Imagination

Welcome to Canon LEGRIA High Definition

Featuring the latest and greatest
camcorder technologies ever developed,
every video is laden with stunning
details and vivid colors that make them a
splendid feast for your senses.



WITH CANON LEGRIA HD CAMCORDERS,
THE WORLD HAS NEVER LOOKED MORE SPECTACULAR.



Crystal Clear Picture Quality

Whether you're shooting videos or photos, you're always assured of superb image quality thanks to DIGIC DV II. By using separate processing paths to handle video and photo signals, it gives you the best possible output regardless of the format.

DIGIC DV III also employs a hybrid noise reduction system that is especially effective at reducing noise in monotone and shadow areas. This results in sharper and clearer images even when you're shooting in low light conditions.

Unleash the power of full HD with DIGIC DV III



Now into its third generation, the cutting-edge DIGIC DV III imaging processor is designed especially for Canon's latest range of High Definition Camcorders. Not only does it deliver improved processing performance and image quality, DIGIC DV III also powers several intelligent features that help you achieve optimum results quickly and easily. With DIGIC DV III, the stage is now set for you to create your best ever videos.

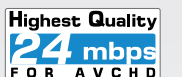


Lifelike Images with x.v. Color



Videos and photos appear more vibrant as DIGIC DV III supports a wider palette of colors based on the xvYCC colour standard. The processor's famed ability for precise colour reproduction also renders subjects more naturally, giving them a greater degree of realism.

Highest Quality 24mbps recording



The LEGRIA High Definition Dual Flash Memory camcorder range allows you to record at up to 24Mbps, the highest bit rate in AVCHD format, for the highest quality image. You're assured of pixel perfect videos that come to life when viewed on any HDTV display.



Intelligent Face Detection



By harnessing the power of DIGIC DV III, Face Detection is now possible on Canon HD camcorders. This smart feature makes it easy to keep your subjects in focus and ensures optimum exposure whether in dim or bright conditions.

Perfect Exposure with Face Priority AE

Achieving the best exposure can be a problem in situations when there is a difference in lighting between the subjects and the background. This will no longer be an issue with the new Face Priority AE mode!

By utilizing the Face Detection capability of DIGIC DV III, the camcorder ensures your subjects look natural by automatically compensating for these differences. Even lighting conditions once difficult to shoot in can be captured with the same natural brightness as seen by the naked eye.

Face Tracking Selection

Up to 35 faces can be detected at a time during shooting, but only 9 will be displayed with a frame around it. When more than one face is detected, the camcorder will determine the main subject for focusing and display it in a white frame. You can also select which face to focus on by using the multi-scroll button.



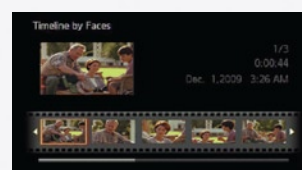
Face Focus Assist

For manual auto-focusing, you have the option of enlarging the detected face of the subject to check that it is clearly in focus.



Face Selection Playback

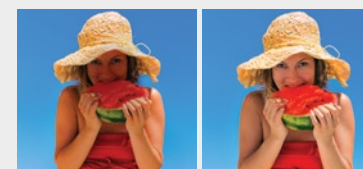
In Movie Playback mode, a "Scene By Faces" feature displays thumbnails of faces detected in each scene so it's easy to locate your favorite shots. You can select any of the thumbnails to start playback of a scene.



A "Timeline By Face" function displays a list of thumbnails of faces detected in a scene in a time-based sequence. Playback from these cuts is also possible.

Subject too dark due to bright background

The camcorder detects the subject's face and automatically adjusts exposure to preserve details.

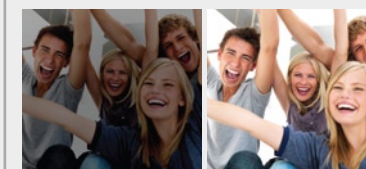


Subject too dark

Corrected

Underexposure due to insufficient flash

The camcorder lightens the subject's face to compensate for the lack of light.

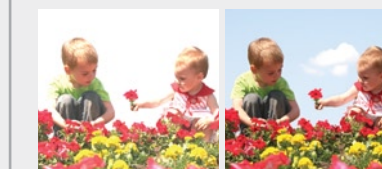


Underexposed

Corrected

Overexposure due to dark background or sunny conditions

The camcorder controls the brightness level to prevent subjects from being overexposed.



Overexposed

Corrected

Commanding Performance for the Aspiring Auteur



For those who demand absolutely the best HD video quality that Canon has to offer, look no further than the LEGRIA HF S10 and LEGRIA HF S100 High Definition camcorders. Only the most advanced imaging technologies, such as DIGIC DV III and an 8.59-megapixel HD CMOS, are included inside these high-end flagship models. Innovative new features such as Face Detection and Video Snapshot Mode make these smart camcorders a pleasure to use, while aspiring filmmakers will enjoy a range of industry-grade features designed to give videos a professional feel.

When it comes to HD camcorders, it doesn't get any better than this.

Superior Optical Performance



HD Video Lens

HD Video Lens with
10x Optical Zoom &
Digital Teleconverter

A high-grade video lens designed for HD ensures your videos have an outstanding level of clarity. Its larger diameter allows it to capture more light, which is especially useful in dim lighting. Gradation ND filters are also included to prevent overexposure when shooting in sunny conditions.

If you want to get closer to the action, a 10x optical zoom capability helps you do that easily. If that's not enough, a digital tele-converter function gives you a further 1.7x (approx.) zoom without any loss in image quality. This greater level of versatility lets you capture a larger variety of shots.

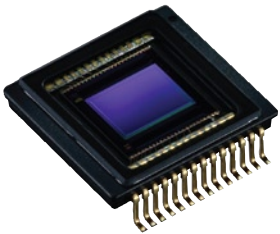
The Ultimate Standard in Video Definition

8.59-Megapixel HD CMOS

The LEGRIA HF S10 and LEGRIA HF S100 feature a revolutionary 1/2.6" 8.59-megapixel HD CMOS that delivers spectacular clarity and detail in every frame and in any light. With an effective resolution of approx. 6.01 megapixels, these premium camcorders can output video at a Full HD resolution of 1920 x 1080 pixels.

8.0 MEGA
PIXELS
STILL IMAGE RECORDING

8-megapixel photos can also be captured at the touch of a button, making them an excellent alternative to a digital camera.



*LEGRIA HF S10 only

LEGRIA HF S10

- DIGIC DV III
- 8.59-Megapixel HD CMOS
- HD Video Lens
- 10x Optical Zoom
- x.v. Color
- Face Detection
- 8-Megapixel Stills
- Built-in 32GB Flash Drive
- SD/SDHC Card Slot
- Video Snapshot Mode
- Dual Shot Mode
- Professional Shooting Assist Features
- Mini Accessory Shoe
- HDMI Interface

LEGRIA HF S100

- DIGIC DV III
- 8.59-Megapixel HD CMOS
- HD Video Lens
- 10x Optical Zoom
- x.v. Color
- Face Detection
- 8-Megapixel Stills
- SD/SDHC Card Slot
- Video Snapshot Mode
- Dual Shot Mode
- Professional Shooting Assist Features
- Mini Accessory Shoe
- HDMI Interface

Zebra Pattern & Color Peaking Display

These two features commonly found in professional camcorders will assist you in getting accurate exposure and focus control when shooting.

The first is the zebra pattern display feature that helps you to see which parts of your images are overexposed. You have the choice of displaying the pattern on areas that are exposed by 70% and more, or 100%.

By switching the LCD image to monochrome, the Color Peaking feature makes it easy to see which subjects are in focus. The edges of subjects in focus appear outlined in red, blue or yellow.



Zebra Pattern



Color Peaking Display

LEGRIA HF S10 / LEGRIA HF S100

Shoot Like A Professional

Industry-grade Shooting Functions

Color Bars & Test Tone

A color bar function that complies with the SMPTE standard and an audio test tone (1 kHz, 12 dB) are available to help you ensure colors and audio levels are exactly as you intended.



Automatic Gain Control (AGC) Limit

You can set a limit on the maximum gain level during auto gain so that videos shot in dim conditions appear closer to reality. Choose from 0, 6, 12, 18 dB or Auto.



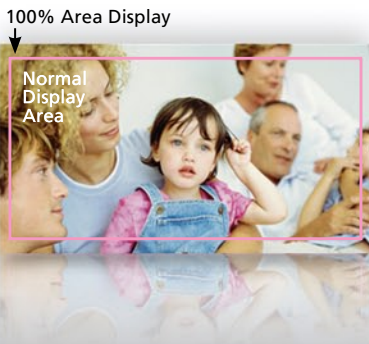
Custom Key & Dial

Exposure, focusing, assist functions, microphone volume level* or Automatic Gain Control (AGC) limit* settings can be assigned to the custom key and adjusted via the dial for swift and easy operation.

*Only during movie recording mode

100% Area Confirmation Display

This function allows you to easily check the 100% shooting range on the LCD screen.



Ultra Compact. Ultra Powerful. Ultra Stylish.



The first time you hold the LEGRIA HF20 or LEGRIA HF200 High Definition camcorder, you realize how small it is. Fitting into your palm easily, it's hard to believe this stylish device shoots HD movies. But it can, and it does so superbly. These ultra-lightweight camcorders pack the DIGIC DV III processor and a HD CMOS capable of capturing fine details and precise colors in superb 1920 x 1080 High Definition. The latest camcorder features such as Video Snapshot Mode and the Pre Recording function round up this exquisitely designed duo that's sure to turn heads everywhere.



*LEGRIA HF20 only

LEGRIA HF20

- DIGIC DV III
- 3.89-Megapixel HD CMOS
- HD Video Lens
- 15x Optical Zoom
- x.v. Color
- Face Detection
- 3.3-Megapixel Stills
- Built-in 32GB Flash Drive
- SD/SDHC Card Slot
- Video Snapshot Mode
- Dual Shot Mode
- Mini Accessory Shoe
- HDMI Interface

LEGRIA HF200

- DIGIC DV III
- 3.89-Megapixel HD CMOS
- HD Video Lens
- 15x Optical Zoom
- x.v. Color
- Face Detection
- 3.3-Megapixel Stills
- SD/SDHC Card Slot
- Video Snapshot Mode
- Dual Shot Mode
- Mini Accessory Shoe
- HDMI Interface

A Style In A Class Of Its Own

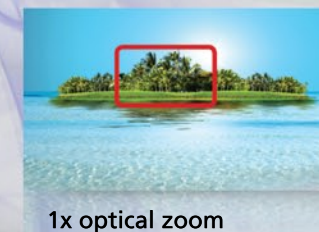
Ultra Compact & Elegant Design

With their sleek and classy design, you'll have no doubt that the LEGRIA HF20 and LEGRIA HF200 are powerful performers that look as good as they work. Extremely light and compact, they give you a great level of portability so that you can keep them in your bag at all times.

Pristine Images At Any Distance

HD Video Lens with 15x Optical Zoom

The high-quality HD video lens is made using top-grade materials such as aspherical lens elements to ensure a superb level of clarity and minimal image distortion every time. 15x optical zoom helps you get closer to your subject so you can capture even the subtlest of expressions.



1x optical zoom



15x optical zoom

Optional Waterproof Case



With the optional WP-V1 Waterproof Case, it's now possible to capture the wonders of the seas with the LEGRIA HF20 / HF200. Shoot underwater adventures at depths of up to 40m (130ft). This compact and lightweight housing fits the camcorders like a wet suit, allowing for greater control and smoother operation. As an added plus, once enabled in the Special Scene mode, white balance is controlled in a way which is ideally suited to an underwater environment.

[Underwater]



Experience the Dual Flash Memory Advantage

Speedy Operation

With no moving parts, reading and writing data to flash memory is quicker than other types of storage media. Not only does this mean faster recording, accessing and playing back videos and photos is also quicker.

Extended Recording Time



All Dual Flash Memory camcorders have an SD/SDHC memory card slot that lets you increase the amount of video you can shoot. A 32GB SDHC card gives you approximately 12 hours of recording time. Add that on to the LEGRIA HF S10 and LEGRIA HF20's built-in 32GB flash drive, and you can capture an astounding 24 hours of video! When cards with greater capacities are made available, you can shoot even more!



Greater Reliability

Flash memory is also extremely stable and durable, making it resilient against impacts and shocks, and less likely to suffer from data loss if the camcorder is dropped.

Low Power Consumption

Flash memory does not have any moving parts and so requires less power to function. This means a longer recording duration, perfect for situations that call for extensive shooting times such as vacations or concerts.



Compact & Lightweight

The miniscule size of flash memory drives allows for a more compact camcorder design. This gives the camcorders a higher level of portability so it can be carried around easily without too much bulk or weight.



Perfectly Silent

Flash memory functions with barely any sound because it has no moving parts. As such, flash memory camcorders are suitable for use in quieter environments such as classical concerts.



LEGRIA HF S10

32GB built-in memory & SD/SDHC card slot

LEGRIA HF S100

SD/SDHC card slot

LEGRIA HF20

32GB built-in memory & SD/SDHC card slot

LEGRIA HF200

SD/SDHC card slot



Video Snapshot

Make Instant Music Videos with Video Snapshot Mode!

Now you can effortlessly record short movie snippets and string them together into a music video you and your friends can enjoy! And best of all, everything is done directly from your LEGRIA camcorder.

In Video Snapshot Mode, you can shoot clips each with a duration of up to 4 seconds. When you're done shooting, compile them into a playlist, select a music track, and viola! You have just directed your very own music video!

10 different music tracks are pre-installed into the camcorder so you can make your music videos straight out of the box. Adding your own songs is also possible with the included ImageMixer3 software.

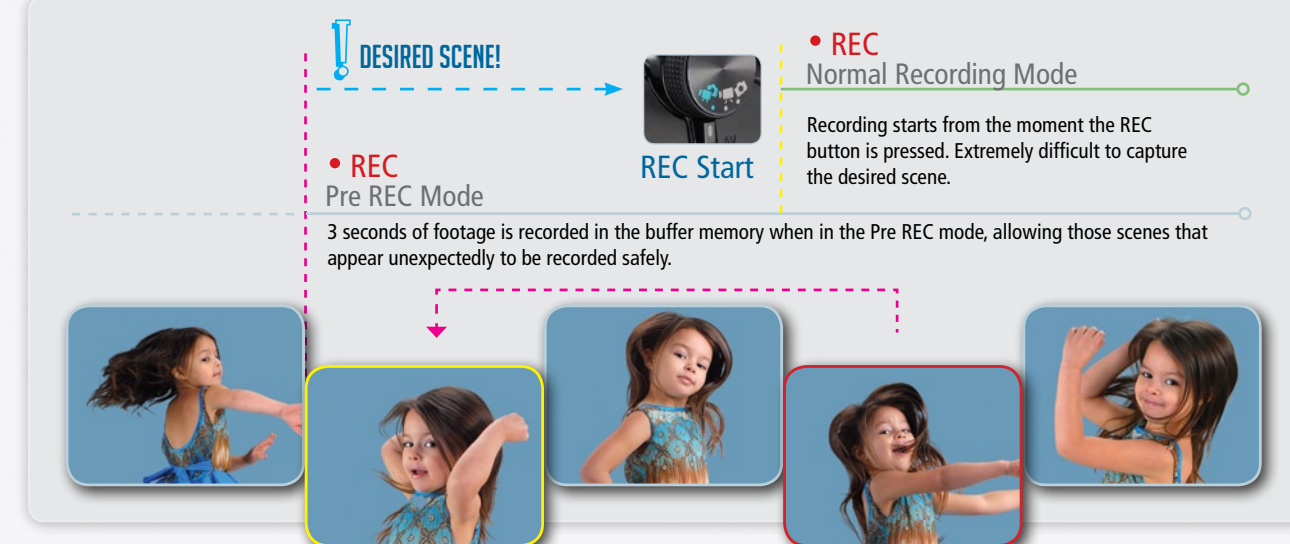


Pre REC

Never Miss a Single Moment with Pre Recording Function!

It happens a lot — memorable moments that pass before you have the chance to capture them. The ingenious Pre Recording Mode ensures these precious moments never escape you again.

With the Pre Recording Mode turned on, the camcorder will discreetly capture 3 seconds of video that happened prior to you pressing the record button. So even if you missed that funny moment, you can be sure the camcorder has got it.



Advanced Functions. Simple Operation.

Super Range Optical Image Stabilizer

With the powerful Super Range Optical Image Stabilizer, you'll never have to worry about blurred videos. By shifting the lens to change the path of incoming light, the effects of a wide range of shaking can be easily corrected. This includes the gentle shaking that occurs while handholding the camcorder, to high-speed vibrations generated when shooting from a moving vehicle.



Instant AF

Despite the higher requirements of HD, precise focusing is easily attained thanks to the Instant AF system. Combining an external AF sensor with Canon's autofocus system, this hybrid AF system ensures accurate focus even when shooting at night or with slow shutter speeds.

25p Cinema Mode

Lend your videos a cinematic look during recording with the Cinema Mode feature. It uses the frame rate (PAL: 25P / NTSC: 24P) adopted by professional filmmakers to add a touch of sophistication to your work. A CINE AE mode is also available to give your videos a traditional celluloid film appearance without changing the frame rate.

Quick Start Standby

Closing the LCD monitor when the camcorder is in camera mode puts it in standby. To start shooting again, simply flip open the LCD monitor or turn the mode dial to your desired mode.

2.7" Widescreen LCD

The 211,000-dot TFT color LCD monitor uses ultra-bright LEDs that achieved higher brightness levels with reduced power consumption. Select from three brightness levels (Bright/Standard/Dimmer) to improve visibility. The LEGRIA HF S10 and LEGRIA HF S100's screens also have a special coating that makes them more resistant to dirt and scratches.

Multi-Scroll UI

An improved user interface based on the multi-scroll button makes menu operation a lot more intuitive. With it, you can easily access a whole host of functions with just this button.

Capture Photos from Video Playback

During video playback, the camcorder can save up to 25 consecutive images from a one-second clip of video — a useful feature for storyboarding or promotional purposes.

Accessory Shoe

With the mini accessory shoe, you can connect an optional video flash light to the camcorder for additional lighting, or a stereo microphone for improved audio recording.

Built-In Video & Flash Lights

The built-in video and flash lights allow close-up shooting of subjects under low-light conditions, and are stored out of sight when not in use.



Microphone Terminal

Attach an external microphone to the mic terminal for improved audio recording.

HDMI Connectivity

A HDMI interface allows you to view your videos in all their HD glory with a single cable connection. When the camcorder is connected to any HDMI-compatible device via a HDMI cable*, it will analyze the unit's capabilities and configure it to best display your videos.

*Sold separately

AV Terminal

The AV mini-terminal doubles as a headphone jack for audio monitoring while shooting.

Print/Share Button

Print photos directly to PictBridge-compatible printers, or transfer videos and photos to a computer easily with this button. A USB 2.0 Hi-Speed interface ensures quicker transfers of videos and photos.

SD/SDHC Memory Card Slot

Not only does the memory card slot let you increase shooting capacity, you can also copy videos and photos to it for quick and convenient transferring to a computer.

Camera/Play Button

No more fiddling with the mode dial. One press of this button switches the camcorder between camera mode and playback mode. You can also use the multi-scroll button to switch between video and photo playback easily.



New Dual Shot Mode

Dual Shot mode lets you alternate quickly between shooting videos and photos easily. In this mode, you can capture photos or videos with just one step. Simply set the main dial to Dual Shot mode, and press record when you want to shoot video, or press the photo button when you want to capture a photo.

Specifications



LEGRIA HF S10



Package Content



Camcorder Body
Wireless Controller (WL-D88)
Battery Pack (BP-807)
Component Cable (CTC-100/S)
Compact Power Adapter (CA-570)
Interface Cable (IFC-400PCU)
Stereo Video Cable (STV-250N)
PIXELA ImageMixer3 SE
Digital Video Solution Disc
Music Data CD

Specifications						
Standard Definition or High Definition	High Definition					
Television System	PAL					
Video Recording System	MPEG4-AVC / H.264					
Image Sensor	1/2.6-inch CMOS, RGB Primary Color Filter					
Total Pixels	Approx. 8.59 Megapixels					
Effective Pixels	Video: Approx. 6.01 Megapixels (3264 x 1840) / Still Image: 16:9: Approx. 6.01 Megapixels (3264 x 1840), 4:3 Approx. 8.02 Megapixels (3264 x 2456)					
Recording Hours	Memory Capacity	MXP (24 Mbps) (Full HD 1920x1080)*	FXP (17 Mbps) (Full HD 1920x1080)*	XP+ (12 Mbps)	SP (7 Mbps)	LP (5 Mbps)
	32GB internal Flash drive	2 hr 55 mins	4 hr 10 mins	5 hr 45 mins	9 hr 35 mins	12 hr 15 mins
*SDHC Memory Card class 4 is required to record Full HD. 128 MB card is required for movie recording.						
Lens	Zoom Ratio : 10x Optical/200x Digital Focal Length : f=6.4- 64mm (35mm equivalent: 43.5 - 435mm) Zoom Speed : Variable / 3 Fixed Zoom Speeds Max. F/Stop : f/1.8-3.0					
Focusing System	Instant AF, Face Priority AF, TTL (through the lens)					
Manual Exposure	Yes					
Programmed AE	AUTO, P, Av, Tv, Portrait, Sports, Night, Snow, Beach,Sunset, Spotlight, Fireworks					
Max Shutter Speed	Movie: 1/2000, Still image: 1/500					
Minimum Focusing Distance	10mm (wide) / 1m (tele)					
White Balance	Auto, Daylight, Shade, Cloudy, Tungsten, Fluorescent, Fluorescent H, Manual					
Frame Rate	50i, PF25 (Progressive frame shooting, 50i recording)					
Minimum Illumination	0.3 lx (Night mode)					
Image Stabilization	SuperRange Optical (lens shift)					
Filter Diameter	58mm					
Viewfinder	None					
LCD Screen	2.7-inch Multi-Angle Vivid widescreen color LCD (Approx. 211,000 dots)					
Flash	Built-in					
Recording Media	Internal Flash Drive (32GB) or SD/SDHC Memory Card					
USB Terminal	USB 2.0 Hi-Speed					
Video Terminal	component (output), composite (output)					
Audio	Dolby Digital 2 channels (AC-3 2 ch)					
Accessory Shoe	mini Advanced					
Supplied Video Editing Software	Pixela ImageMixer 3SE					
HDMI Terminal	HDMI Mini Connector (output), CEC and x.v. Color					
Microphone Terminal	3.5 mm stereo mini-jack					
AV Mini Terminal / Headphone Terminal	3.5 mm 4 pole mini-jack (video / audio output only)					
Dimensions (W x H x D)	70 x 69 x 136mm					
Weight (not including grip belt and battery pack)	450g					
Weight (fully loaded)	500g					

Specifications



LEGRIA HF S100



Package Content



Camcorder Body
Wireless Controller (WL-D88)
Battery Pack (BP-807)
Component Cable (CTC-100/S)
Compact Power Adapter (CA-570)
Interface Cable (IFC-400PCU)
Stereo Video Cable (STV-250N)
PIXELA ImageMixer3 SE
Digital Video Solution Disc
Music Data CD

Specifications						
Standard Definition or High Definition	High Definition					
Television System	PAL					
Video Recording System	MPEG4-AVC / H.264					
Image Sensor	1/2.6-inch CMOS, RGB Primary Color Filter					
Total Pixels	Approx. 8.59 Megapixels					
Effective Pixels	Video: Approx. 6.01 Megapixels (3264 x 1840) / Still Image: 16:9: Approx. 6.01 Megapixels (3264 x 1840), 4:3 Approx. 8.02 Megapixels (3264 x 2456)					
Recording Hours	Memory Capacity	MXP (24 Mbps) (Full HD 1920x1080)*	FXP (17 Mbps) (Full HD 1920x1080)*	XP+ (12 Mbps)	SP (7 Mbps)	LP (5 Mbps)
	32GB SDHC Memory Card (not supplied)	2 hr 55 mins	4 hr 10 mins	5 hr 45 mins	9 hr 35 mins	12 hr 15 mins
*SDHC Memory Card class 4 is required to record Full HD. 128 MB card is required for movie recording.						
Lens	Zoom Ratio : 10x Optical/200x Digital Focal Length : f=6.4- 64mm (35mm equivalent: 43.5 - 435mm) Zoom Speed : Variable / 3 Fixed Zoom Speeds Max. F/Stop : f/1.8-3.0					
Focusing System	Instant AF, Face Priority AF, TTL (through the lens)					
Manual Exposure	Yes					
Programmed AE	AUTO, P, Av, Tv, Portrait, Sports, Night, Snow, Beach,Sunset, Spotlight, Fireworks					
Max Shutter Speed	Movie: 1/2000, Still image: 1/500					
Minimum Focusing Distance	10mm (wide) / 1m (tele)					
White Balance	Auto, Daylight, Shade, Cloudy, Tungsten, Fluorescent, Fluorescent H, Manual					
Frame Rate	50i, PF25 (Progressive frame shooting, 50i recording)					
Minimum Illumination	0.3 lx (Night mode)					
Image Stabilization	SuperRange Optical (lens shift)					
Filter Diameter	58mm					
Viewfinder	None					
LCD Screen	2.7-inch Multi-Angle Vivid widescreen color LCD (Approx. 211,000 dots)					
Flash	Built-in					
Recording Media	SD/SDHC Memory Card					
USB Terminal	USB 2.0 Hi-Speed					
Video Terminal	component (output), composite (output)					
Audio	Dolby Digital 2 channels (AC-3 2 ch)					
Accessory Shoe	mini Advanced					
Supplied Video Editing Software	Pixela ImageMixer 3SE					
HDMI Terminal	HDMI Mini Connector (output), CEC and x.v. Color					
Microphone Terminal	3.5 mm stereo mini-jack					
AV Mini Terminal / Headphone Terminal	3.5 mm 4 pole mini-jack (video / audio output only)					
Dimensions (W x H x D)	70 x 69 x 136mm					
Weight (not including grip belt and battery pack)	450g					
Weight (fully loaded)	500g					

Specifications



LEGRIA HF20



Package Content



- Camcorder Body
- Wireless Controller (WL-D88)
- Battery Pack (BP-809)
- Component Cable (CTC-100/S)
- Compact Power Adapter (CA-570)
- Interface Cable (IFC-400PCU)
- Stereo Video Cable (STV-250N)
- PIXELA ImageMixer3 SE
- Digital Video Solution Disc
- Music Data CD

Specifications						
Standard Definition or High Definition	High Definition					
Television System	PAL					
Video Recording System	MPEG4-AVC / H.264					
Image Sensor	1/4-inch CMOS, RGB Primary Color Filter					
Total Pixels	Approx. 3.89 Megapixels					
Effective Pixels	Video: Approx. 3 Megapixels (2304 x 1296) / Still Image: 16:9: Approx. 3 Megapixels (2304 x 1296), 4:3 Approx. 3.31 Megapixels (2100 x 1575)					
Recording Hours	Memory Capacity	MXP (24 Mbps) (Full HD 1920x1080)*	FXP (17 Mbps) (Full HD 1920x1080)*	XP+ (12 Mbps)	SP (7 Mbps)	LP (5 Mbps)
	32GB internal Flash drive	2 hr 55 mins	4 hr 10 mins	5 hr 45 mins	9 hr 35 mins	12 hr 15 mins
*SDHC Memory Card class 4 is required to record Full HD. 128 MB card is required for movie recording.						
Lens	Zoom Ratio : 15x Optical / 300x Digital Focal Length : f=4.1- 61.5mm (35mm equivalent: 39.5 - 592.5mm) Zoom Speed : Variable / 3 Fixed Zoom Speeds Max. F/Stop : f/1.8-3.2					
Focusing System	Instant AF, Face Priority AF, TTL (through the lens)					
Manual Exposure	Yes					
Programmed AE	AUTO, P, Av, Tv, Portrait, Sports, Night, Snow, Beach, Sunset, Spotlight, Fireworks					
Max Shutter Speed	Movie: 1/2000, Still image: 1/500					
Minimum Focusing Distance	10mm (wide) / 1m (tele)					
White Balance	Auto, Daylight, Shade, Cloudy, Tungsten, Fluorescent, Fluorescent H, Manual					
Frame Rate	50i, PF25 (Progressive frame shooting, 50i recording)					
Minimum Illumination	0.4 lx (Night mode)					
Image Stabilization	SuperRange Optical (lens shift)					
Filter Diameter	37mm					
Viewfinder	None					
LCD Screen	2.7-inch Multi-Angle Vivid widescreen color LCD (Approx. 211,000 dots)					
Flash	Built-in					
Recording Media	Internal Flash Drive (32GB) or SD/SDHC Memory Card					
USB Terminal	USB 2.0 Hi-Speed					
Video Terminal	component (output), composite (output)					
Audio	Dolby Digital 2 channels (AC-3 2 ch)					
Accessory Shoe	mini Advanced					
Supplied Video Editing Software	Pixela ImageMixer 3SE					
HDMI Terminal	HDMI Mini Connector (output), CEC and x.v. Color					
Microphone Terminal	3.5 mm stereo mini-jack					
AV Mini Terminal / Headphone Terminal	3.5 mm 4 pole mini-jack (video / audio output only)					
Dimensions (W x H x D)	70 x 62 x 124mm					
Weight (not including grip belt and battery pack)	340g					
Weight (fully loaded)	400g					

Specifications



LEGRIA HF200



Package Content



- Camcorder Body
- Wireless Controller (WL-D88)
- Battery Pack (BP-809)
- Component Cable (CTC-100/S)
- Compact Power Adapter (CA-570)
- Interface Cable (IFC-400PCU)
- Stereo Video Cable (STV-250N)
- PIXELA ImageMixer3 SE
- Digital Video Solution Disc
- Music Data CD

Specifications						
Standard Definition or High Definition	High Definition					
Television System	PAL					
Video Recording System	MPEG4-AVC / H.264					
Image Sensor	1/4-inch CMOS, RGB Primary Color Filter					
Total Pixels	Approx. 3.89 Megapixels					
Effective Pixels	Video: Approx. 3 Megapixels (2304 x 1296) / Still Image: 16:9: Approx. 3 Megapixels (2304 x 1296), 4:3 Approx. 3.31 Megapixels (2100 x 1575)					
Recording Hours	Memory Capacity	MXP (24 Mbps) (Full HD 1920x1080)*	FXP (17 Mbps) (Full HD 1920x1080)*	XP+ (12 Mbps)	SP (7 Mbps)	LP (5 Mbps)
	32GB SDHC Memory Card (not supplied)	2 hr 55 mins	4 hr 10 mins	5 hr 45 mins	9 hr 35 mins	12 hr 15 mins
*SDHC Memory Card class 4 is required to record Full HD. 128 MB card is required for movie recording.						
Lens	Zoom Ratio : 15x Optical / 300x Digital Focal Length : f=4.1- 61.5mm (35mm equivalent: 39.5 - 592.5mm) Zoom Speed : Variable / 3 Fixed Zoom Speeds Max. F/Stop : f/1.8-3.2					
Focusing System	Instant AF, Face Priority AF, TTL (through the lens)					
Manual Exposure	Yes					
Programmed AE	AUTO, P, Av, Tv, Portrait, Sports, Night, Snow, Beach, Sunset, Spotlight, Fireworks					
Max Shutter Speed	Movie: 1/2000, Still image: 1/500					
Minimum Focusing Distance	10mm (wide) / 1m (tele)					
White Balance	Auto, Daylight, Shade, Cloudy, Tungsten, Fluorescent, Fluorescent H, Manual					
Frame Rate	50i, PF25 (Progressive frame shooting, 50i recording)					
Minimum Illumination	0.4 lx (Night mode)					
Image Stabilization	SuperRange Optical (lens shift)					
Filter Diameter	37mm					
Viewfinder	None					
LCD Screen	2.7-inch Multi-Angle Vivid widescreen color LCD (Approx. 211,000 dots)					
Flash	Built-in					
Recording Media	SD/SDHC Memory Card					
USB Terminal	USB 2.0 Hi-Speed					
Video Terminal	component (output), composite (output)					
Audio	Dolby Digital 2 channels (AC-3 2 ch)					
Accessory Shoe	mini Advanced					
Supplied Video Editing Software	Pixela ImageMixer 3SE					
HDMI Terminal	HDMI Mini Connector (output), CEC and x.v. Color					
Microphone Terminal	3.5 mm stereo mini-jack					
AV Mini Terminal / Headphone Terminal	3.5 mm 4 pole mini-jack (video / audio output only)					
Dimensions	70 x 62 x 124mm					
Weight (not including grip belt and battery pack)	340g					
Weight (fully loaded)	400g					

BANGLADESH
J.A.N. Associates
Tel : 880-2-8611444
Fax : 880-2-8610410

BRUNEI
Interhouse Company
Tel : 673-2-653001
Fax : 673-2-653003

CAMBODIA
Royal Cambodia Co. Ltd.
Tel : 855-23-428955
Fax : 855-23-722961

INDIA
Canon India Pvt. Ltd.
Tel : 91-124-4160000
Fax : 91-124-4160011
www.canon.co.in

INDONESIA
P.T. Datascrip
Tel : 62-21-6544515
Fax : 62-21-6544811
www.canon.co.id

MALAYSIA
Canon Marketing
(Malaysia) Sdn. Bhd.
Tel : 60-3-78446000
Fax : 60-3-78450505
www.canon.com.my

MALDIVES
SIMDI Company Pte. Ltd.
Tel : 960-3334421
Fax : 960-3334424

MYANMAR
Accel International
Company Ltd.
Tel : 95-1-202092 ~ 6
Fax : 95-1-202079

NEPAL
Primax International Inc.
Tel : 977-1-4424079
Fax : 977-1-4429358

PAKISTAN
Mega Business Machine
Tel : 92-21-2276926-8
Fax : 92-21-2276930

SINGAPORE
Canon Singapore Pte. Ltd.
Domestic Operations
Tel : 65-6799-8888
Fax : 65-6221-7577
www.canon.com.sg

SRI LANKA
Homebase Electronics (Pvt) Ltd.
Tel : 94-11-2437797
Fax : 94-11-2448980

THAILAND
Canon Marketing
(Thailand) Co. Ltd.
Tel : 66-2-3449999
Fax : 66-2-3449910
www.canon.co.th

VIETNAM
Canon Singapore Pte. Ltd.
Ho Chi Minh City
Representative
Office & Showroom
Tel: 84-8-8200466
Fax: 84-8-8200477

Hanoi Representative Office
Tel: 84-4-7711677
Fax: 84-4-7711678
www.canon.com.vn

Canon

SOUTH & SOUTHEAST ASIA REGIONAL HEADQUARTERS
CANON SINGAPORE PTE. LTD.

1 HarbourFront Avenue, #04-01 Keppel Bay Tower, Singapore 098632
<http://www.canon-asia.com>

Errors and omissions excepted.
Images are simulated.
Weight and dimensions are approximate.
Subject to change without notice.
Macintosh is a trademark of Apple Computer Inc., registered in the United States and other countries. Microsoft® and Windows® are either registered trademarks or trademarks of Microsoft Corporation in the United States and/or other countries. Other names and products not mentioned above may be registered trademarks of trademarks of their respective companies.
SD Logo is a trademark. Canon is a registered trademarks of Canon Inc

Warning: Unauthorized recording of copyrighted materials may infringe on the rights of copyright owners and be contrary to copyright laws.

0132W125