

# Canon

Delighting You Always



## EOS-1Ds Mark III DIGITAL

**21 megapixels.** It sees everything even if you can't.

The new Canon EOS 1Ds Mark III is a stunning union of high-performance technologies and innovative functions, designed to give you the ultimate photographic experience.

Featuring a newly developed 21-megapixel full-frame CMOS sensor and cutting-edge Dual "DIGIC III" imaging processors, the EOS 1Ds Mark III captures images in ultra-high resolution with unparalleled levels of detail and clarity. The high-precision 19-point cross type AF system with 26 assist points ensures accurate high-speed focusing every time. A continuous shooting rate of 5 fps lets you shoot rapid action effortlessly, while a range of sophisticated functions like Live View Mode and the EOS Integrated Cleaning System make this camera an excellent all-rounded performer. With the new Canon EOS 1Ds Mark III, the rules of photography have just been rewritten.



**21 Megapixel  
Resolution**

**5 fps  
Continuous Shooting**

**Full-Frame 35mm  
CMOS Sensor**

**Live View  
Mode**

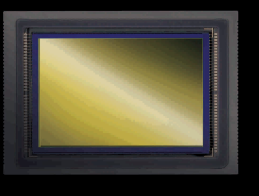
**Dual "DIGIC III"  
Imaging Processors**

**EOS Integrated  
Cleaning System**

## KEY FEATURES

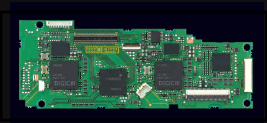
### 21.1-Megapixel 35mm Full-Frame CMOS Sensor

At 21.1-megapixels, the EOS 1Ds Mark III's newly developed CMOS sensor smashes all records for image resolution in its class. The full-frame sensor brings out the maximum potential of Canon's professional EF lenses, and has also been optimised for high ISO shooting with low noise to give you superb image quality every time.



### Dual "DIGIC III" Imaging Processors

Employing Canon's revolutionary Dual "DIGIC III" imaging processors, the EOS 1Ds Mark III can effortlessly render ultra-high quality images with fine detail and natural colour reproduction. The 14-bit A/D conversion method also gives images a richer and smoother tonal expression.



### 5 fps Continuous Shooting up to 56 Shots

Thanks to the Dual "DIGIC III" imaging processors and the high-speed data reading capability of the CMOS sensor, the EOS 1Ds Mark III can deliver a continuous shooting rate of 5 fps to a maximum of 56 shots.

### Live View Mode

Live View mode displays a real-time image on the EOS 1Ds Mark III's LCD monitor or on a connected PC. A host of functions lets you verify all aspects of the image prior to shooting that perfect shot.

### EOS Integrated Cleaning System

The EOS 1Ds Mark III incorporates a comprehensive set of measures to counter dust generation in the camera body. Innovative features such as the Self Cleaning Sensor Unit and Dust Delete Function eliminate the appearance of dust shadows in your images.



### Advanced EOS Lenses and Accessories

The EOS 1Ds Mark III is fully compatible with the comprehensive EOS system of accessories and lenses. With more than 60 different EF lenses and accessories such as Speedlite flashes and battery grips to choose from, you can be sure the comprehensive EOS system has something for all your photography needs.

### Optional New Lens

The new EF14mm f/2.8L II is a professional ultra wide-angle lens with high-precision aspherical lens and UD elements for unsurpassed optical performance.



## SPECIFICATIONS

#### ► TYPE

Type:	Digital, single-lens reflex, AF/AE camera
Recording media:	Type I or II CF card, SD memory card * CF cards, SD memory cards (including SDHC), and Microdrive cards with a 2GB or larger capacity can be used * High-speed data writing enabled with UDMA CF cards * With Wireless File Transmitter WFT-E2/E2A attached, recording possible with USB external media
Image sensor size:	Approx. 36 x 24 mm
Compatible lenses:	Canon EF lenses (except EF-S lenses) (The effective lens focal length is the same as indicated on the lens)
Lens mount:	Canon EF mount

#### ► IMAGE SENSOR

Type:	High-sensitivity, high-resolution, large single-plane CMOS sensor
Pixels:	Effective pixels: Approx. 21.10 megapixels Total pixels: Approx. 21.90 megapixels
Aspect ratio:	3:2
Colour filter system:	RGB primary colour filter
Low-pass filter:	Located in front of the image sensor, non-removable
Dust deletion feature:	(1) Automatic sensor cleaning (2) User-activated sensor cleaning (3) Dust Delete Data appended to the captured image

#### ► RECORDING SYSTEM

Recording format:	Design rule for Camera File System 2.0 & Exif 2.2
Image type:	JPEG, RAW (14bit)
RAW + JPEG simultaneous recording:	Provided (sRAW + JPEG also possible)
File size:	(1) L (Large): Approx. 8.4 MB (5616 x 3744 pixels) (2) M1 (Medium1): Approx. 5.2 MB (4992 x 3328 pixels) (3) M2 (Medium2): Approx. 3.9 MB (4080 x 2720 pixels) (4) S (Small): Approx. 2.2 MB (2784 x 1856 pixels) (5) RAW: Approx. 25.0 MB (5616 x 3744 pixels) (6) sRAW: Approx. 14.5 MB (2784 x 1856 pixels) * JPEG quality: 8, ISO 100, Picture Style: Standard * Exact file sizes depend on the subject, JPEG quality, ISO speed, Picture Style, etc. Folder creation/selection enabled Preset code, User setting (4 characters), User setting2 (3 characters + 1 image size character) Consecutive numbering, auto reset, manual reset sRGB, Adobe RGB Standard, Portrait, Landscape, Neutral, Faithful, Monochrome, User Def. 1 - 3 (1) Standard (2) Auto switch media (recording media switched automatically) (3) Rec. separately (specified image size for each recording media) (4) Rec. to multiple (same image recorded to all recording media) Image copying between recording media enabled (images with checkmarks or all images in folder or card) With WFT-E2/E2A attached, all images and folders in the CF card and SD card can be backed up to USB external media
Folder setting:	
File name:	
File numbering:	
Colour space:	
Picture Style:	
Recording methods:	
Image copy:	
Backup:	

#### ► WHITE BALANCE

Settings:	Auto, daylight, shade, cloudy, tungsten light, white fluorescent light, flash, custom (total 5 settings), colour temperature setting, personal white balance (total 5 settings) Auto white balance with the image sensor
Auto white balance:	
Colour temperature compensation:	White balance correction: ±9 stops in full-stop increments White balance bracketing: ±3 stops in full-stop increments * Blue/amber direction or magenta/green direction possible
Colour temperature information transmission:	Provided

#### ► VIEWFINDER

Type:	Eye-level pentaprism
Coverage:	Approx. 100 percent vertically and horizontally with respect to the effective pixels
Magnification:	0.76x (-1 diopter with 50mm lens at infinity)
Eyepoint:	20mm
Built-in dioptic adjustment:	-3.0 - +1.0 diopter
Focusing screen:	Interchangeable (11 types, sold separately), Standard focusing screen: Ec-C IV
Mirror:	Quick-return half mirror (transmission/reflection ratio of 37:63, no mirror cut-off with EF120mm f/5.6 USM or shorter lens) AF information (AF points, focus confirmation light, metering and exposure information (metering mode, spot metering circle, shutter speed, aperture, manual exposure, AE lock, ISO speed, exposure level, exposure warning), flash information (flash ready, FP flash, FE lock, flash exposure level), white balance correction, JPEG/RAW recording, maximum burst, number of shots remaining, battery check, recording media information Enabled with depth-of-field preview button Built-in
Viewfinder information:	
Depth-of-field preview:	
Eyepiece shutter:	

#### ► AUTOFOCUS

Type:	TTL-AREA-SIR with a CMOS sensor
AF points:	19 AF points (cross-type) and 26 Assist AF points (total 45 points)
Metering range:	EV -1 - 18 (at 23°C/73°F, ISO 100)
Focus modes:	One-Shot AF (ONE SHOT), AI Servo AF (AI SERVO), Manual focusing (MF)
AF point selection:	Automatic selection (45 points), manual selection (19 points, 9 inner points, 9 outer points) Superimposed in viewfinder and indicated on top LCD panel Emitted by the dedicated external Speedlite
Selected AF point display:	
AF-assist beam:	

#### ► EXPOSURE CONTROL

Metering modes:	63-zone TTL full-aperture metering (1) Evaluative metering (linkable to all AF points) (2) Partial metering (approx. 8.5% of viewfinder at center) (3) Spot metering • Center spot metering (approx. 2.4% of viewfinder at center) • AF point-linked spot metering (approx. 2.4% of viewfinder) • Multi-spot metering (Max. 8 spot metering entries) (4) Center-weighted average metering
Metering range:	EV 0 - 20 (at 23°C/73°F with EF50mm f/1.4 USM lens, ISO 100)
Exposure control:	Program AE (shiftable), shutter-priority AE, aperture-priority AE, manual exposure, E-TTL II autofocus, Flash metered manual
ISO speed:	
(Recommended Exposure Index):	100 - 1600 (1/3- or 1-stop increments), expandable to ISO 50 (L) and 3200 (H)
Exposure compensation:	Manual: ±3 stops in 1/3- or 1/2-stop increments (can be combined with AEB) AEB: ±3 stops in 1/3- or 1/2-stop increments Auto: Applied in One-Shot AF mode with evaluative metering when focus is achieved Manual: By AE lock button in all metering modes
AE lock:	

#### ► SHUTTER

Type:	Electronically-controlled, focal-plane shutter
Shutter speeds:	1/8000 to 30 sec. (1/3-, 1/2-, and 1-stop increments), bulb, X-sync at 1/250 sec.
Shutter release:	Soft-touch electromagnetic release
Self-timer:	10 sec. or 2 sec. delay
Remote control:	Remote control with N3 type terminal
► DRIVE SYSTEM	
Drive modes:	Single, High-speed continuous, Low-speed continuous, Self-timer (10 sec. and 2 sec.), and Silent single shooting
Continuous shooting speed (Approx.):	High-speed continuous: Max. 5 shots/sec. Low-speed continuous: Max. 3 shots/sec. JPEG (Large): Approx. 56, RAW: Approx. 12, RAW + JPEG (Large): Approx. 10 * Based on Canon's testing conditions with a 2GB CF card for high-speed continuous shooting with JPEG quality 8, ISO 100, Standard Picture Style. * Varies depending on the subject, memory card brand, image-recording quality, ISO speed, drive mode, Picture Style, Custom Functions, etc.
Max. burst:	

#### ► EXTERNAL SPEEDLITE

Compatible flash:	EX-series Speedlites
Flash metering:	E-TTL II autofocus
Flash exposure compensation:	±3 stops in 1/3- or 1/2-stop increments
FE lock:	Provided
External flash settings:	Flash function settings, Flash C.Fn settings
PC terminal:	Available
Zooming to match lens focal length:	Available

#### ► LIVE VIEW FUNCTIONS

Shooting modes:	(1) Remote Live View shooting (with a personal computer installed with EOS Utility) (2) Live View shooting Manual focus Evaluative metering with the image sensor EV 0 - 20 (at 23°C/73°F with EF50mm f/1.4 USM lens, ISO 100) Magnified view: 5x or 10x at AF point Grid display: Provided Exposure simulation: Provided
Focusing:	
Metering modes:	
Metering range:	
Magnified view:	
Grid display:	
Exposure simulation:	

#### ► LCD MONITOR

Type:	TFT colour liquid-crystal monitor
Monitor size:	3.0 in.
Pixels:	Approx. 230,000
Coverage:	Approx. 100%
Brightness adjustment:	7 levels provided
Interface languages:	18

#### ► IMAGE PLAYBACK

Display format:	Single image, single image + image size, shooting info, histogram, 4-image or 9-image index, magnified zoom (approx. 1.5x - 10x), rotated image, jump (by 1/10/100 images, 1 screen, shooting date, or folder) Provided (Overexposed highlights blink)
-----------------	-----------------------------------------------------------------------------------------------------------------------------------------------------------------------------------------------------------------------------------------------------------

#### ► IMAGE PROTECTION AND ERASE

Protect:	Erase protection of one image, all images in a folder, or all images in the memory card can be applied or canceled at one time
Erase:	One image, all images with checkmarks in a folder, or all images in the memory card can be erased (except protected images) at one time

#### ► SOUND RECORDING

Recording method:	The sound clip recorded with the built-in microphone is attached to the image
File type:	WAV
Recording time:	Max. 30 sec. per sound clip

#### ► DIRECT PRINTING

Compatible printers:	PictBridge-compatible printers
Printable images:	JPEG images compliant to Design rule for Camera File System (DPOF printing possible) and RAW/sRAW images captured with the EOS-1Ds Mark III

#### ► DIGITAL PRINT ORDER FORMAT

DPOF:	Version 1.1 compatible
-------	------------------------

#### ► DIRECT IMAGE TRANSFER

Compatible images:	JPEG and RAW/sRAW images * Only JPEG images can be transferred as wallpaper on the personal computer screen
--------------------	----------------------------------------------------------------------------------------------------------------

#### ► CUSTOMIZATION

Custom Functions:	Total 57
C.Fn setting registration:	Provided
My Menu registration:	Provided
Save camera settings:	Provided
Register basic camera settings:	Provided

#### ► INTERFACE

USB terminal:	For personal computer communication and direct printing (USB 2.0 Hi-Speed)
Video OUT terminal:	NTSC/PAL selectable
Extension system terminal:	For connection to WFT-E2/E2A

#### ► POWER SOURCE

Battery:	Battery Pack LP-E4 (Quantity 1) * AC power can be supplied via AC Adapter Kit ACK-E4
Battery life:	At 23°C / 73°F: Approx. 1800 shots At 0°C / 32°F: Approx. 1400 shots * With fully-charged Battery Pack LP-E4 * Without Live View shooting * The figures above are based on CIPA (Camera & Imaging Products Association) testing standards Automatic (Displayed in 6 levels) * Detailed battery information provided Provided, Power turns off after 1, 2, 4, 8, 15, or 30 min. One CR2025 lithium battery Approx. 0.2 sec.
Battery check:	
Power saving:	
Date/Time battery:	
Startup time:	

#### ► DIMENSIONS & WEIGHT

Dimensions (W x H x D):	156 x 158.6 x 79.9 mm / 6.1 x 6.3 x 3.1 in.
Weight (Approx.):	1210 g / 42.7 oz. (Body only)

#### ► OPERATING ENVIRONMENT

Working temperature range:	0°C - 45°C / 32°F - 113°F
Working humidity:	85% or less

\* EOS cameras are water and dust resistant, however, it is not recommended for use under rain.  
\* Shutter durability may vary depending on usage and environmental conditions  
\* All specifications above are based on Canon's testing standards.  
\* The camera's specifications and exterior are subject to change without notice.

**C n n**

**SOUTH & SOUTHEAST ASIA REGIONAL HEADQUARTERS  
CANON SINGAPORE PTE. LTD.**

1 HarbourFront Avenue,  
#04-01 Keppel Bay Tower,  
Singapore 098632

<http://www.canon-asia.com>



**EOS**

Integrated  
Cleaning  
System



**PictBridge**

**Exif Print**

**DIRECT  
PRINT**

Errors and omission excepted. Weight and dimensions are approximate. Subject to change without notice. Microsoft are either registered trademarks or trademarks of Microsoft® Corporation in the United States and/or other countries. Other names and products not mentioned above may be registered trademarks or trademarks of their respective companies. Canon is a registered trademarks of Canon Inc.

**Warning:** Unauthorised recording of copyrighted materials may infringe on the rights of copyright owners and be contrary to copyright laws.

0101W585