

Canon

Delighting You Always



EOS 450D

MADE FOR YOU.
MADE FOR YOUR WORLD.





A SHOT ABOVE THE REST

Photography is essentially about creating beautiful imagery. Because we believe that everyone should have the right to do this, we designed the Canon EOS 450D DSLR camera.

Featuring an astonishing 12.2-megapixel CMOS sensor and the advanced DIGIC III imaging processor, the EOS 450D gives you the ability to shoot professional-looking images effortlessly. Also included are the Live View shooting mode and EOS Integrated Cleaning System, innovative features previously found only in high-end EOS DSLR cameras that ensure your images turn out the way you want them to. With

such superior functionality, no other camera in its class even comes close.

Add to that the EOS 450D's full compatibility with the comprehensive Canon EOS system of over 70 interchangeable lenses and a wide range of accessories from Speedlite flashes to battery grips, this is a camera even professional photographers can appreciate. But then again, why let the professionals have all the fun?

The Canon EOS 450D. Start shooting now.



THE BEST TECHNOLOGY FOR THE FINEST IMAGES

By incorporating advanced imaging technologies previously found only in higher-end EOS DSLR cameras, the EOS 450D gives you the ability to produce world-class images just like the pros.

High Performance 12.2M CMOS Sensor

12.2 MEGA
PIXELS
CMOS

With each new EOS DIGITAL camera, Canon pushes the boundaries of sensor development to produce a CMOS sensor so brilliant, it leaves everything else in its wake. Continuing this proud tradition, Canon has developed a new large, single-piece, APS-C sized CMOS sensor for the EOS 450D.

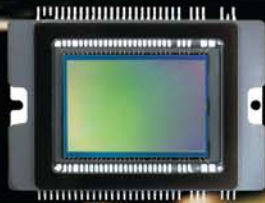
With an effective resolution of 12.2 megapixels, it captures beautiful images of up to 4272 x 2848 pixels to give you an excellent level of detailing. The sensor measures 22.2 mm x 14.8 mm, giving the EOS 450D a lens crop factor of 1.6x.

DIGIC III Imaging Processor

DiGiC
III

At the heart of the EOS 450D is Canon's state-of-the-art DIGIC III Imaging Processor, the very same engine used by Canon's flagship EOS-1 series DSLR cameras.

Utilising proprietary Canon algorithms, DIGIC III processes signals from the CMOS sensor to give you high-resolution images of exceptional clarity and detail. Because it is fast as it is powerful, the EOS 450D can execute high-speed shooting effortlessly, while maintaining image quality and precise colour reproduction as well.



CANON
CH4-6336
E142C1
JAPAN
0727 Z44

DiGiC
III

DiGiC
III

0353 544
2004M



Finer Gradation with 14-bit A/D Conversion



A step up from the EOS 400D, the EOS 450D uses a 14-bit A/D conversion method that provides higher quality colour reproduction and smoother tonal expression. Whether you shoot in RAW or JPEG format, your subjects appear true-to-life with superb colour reproduction and gradation.

Highlight Tone Priority

For better colour rendition and a more life-like feel, the EOS 450D's Highlight Tone Priority improves gradation within highlight areas while suppressing loss of detail. This prevents your images from suffering a "white-out" effect when shooting under bright conditions.

Clearer Shots with Noise Reduction



To give you beautiful shots with astounding clarity, the EOS 450D's CMOS sensor is equipped with advanced noise reduction circuitry effective at suppressing distortion even at high ISO speeds or during long exposure shots. Images taken indoors or at night greatly benefit from this function.

Shoot in RAW, JPEG or RAW+JPEG



You can choose to shoot in the widely used JPEG format or Canon's proprietary RAW format - or even both formats simultaneously.

The key advantage of JPEG format is that image file sizes are smaller, which means you can shoot a lot more. There are also six different recording qualities for you to choose from depending on your needs.

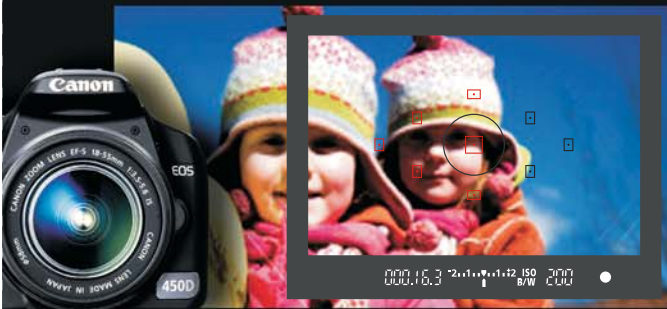
To experience the highest possible image quality of the EOS 450D, shoot using the RAW format. Canon's proprietary RAW (CR2) format employs a lossless compression method that provides a wider range of tones and details for brighter highlights and deeper contrasts. You can then tweak it to your desired effect using the Digital Photo Professional software found in the EOS Solution Disk.





SPEED AND ACCURACY BEYOND ANY OTHER

High-Precision 9-Point AF Sensor



9^{point}
AF

For fast and precise focusing, the EOS 450D uses a newly developed high-speed AF system with 9 AF points. With any f/2.8 or larger aperture lenses, the centre AF point works as a high-precision, cross-type sensor for extraordinary focusing precision. The AF system also automatically corrects slight shifts in focus caused by different light sources to give you more consistent auto-focusing.

3.5 Frames Per Second Continuous Shooting



3.5
Frames
Per Sec

Fire away as you like with the EOS 450D's improved high-speed continuous shooting mode. Harnessing the rapid processing ability of the DIGIC III imaging processor, the camera can capture up to 3.5 frames per second with a maximum burst of 53 JPEG Type (Large/Fine) or approximately 6 RAW Type images.

Start-Up Time

0.2sec
Startup Time

With an almost instantaneous start-up time of 0.2 sec, the EOS 450D will always be ready to shoot as soon as you are.

1/4000 sec. Maximum Shutter Speed



Using a new and enhanced shutter unit, the EOS 450D's quickest shutter speed is an amazing 1/4000 sec with 1/200 sec. maximum X-sync speed. Combined with high ISO sensitivity, you can capture high-octane action sequences clearly. Or set the shutter speed to 30 seconds (or longer with Bulb mode) to capture the full ambience of night lighting.

LIVE VIEW

A NEW WAY TO SHOOT

Open up a world of shooting possibilities with Canon's Live View mode. First incorporated in higher-end EOS DIGITAL cameras, Live View lets you shoot using the LCD monitor instead of the viewfinder. With a larger display to compose your images, you have more freedom to shoot creatively and get the shot you desire.

Live View Shooting Functions

LiveView MODE

More than just shooting via the LCD monitor, Live View mode also adds several functions that are only possible thanks to this brilliant technology.

Dual AF Methods

Live View mode provides you with 2 AF modes to choose from depending on your preference:

Quick Mode

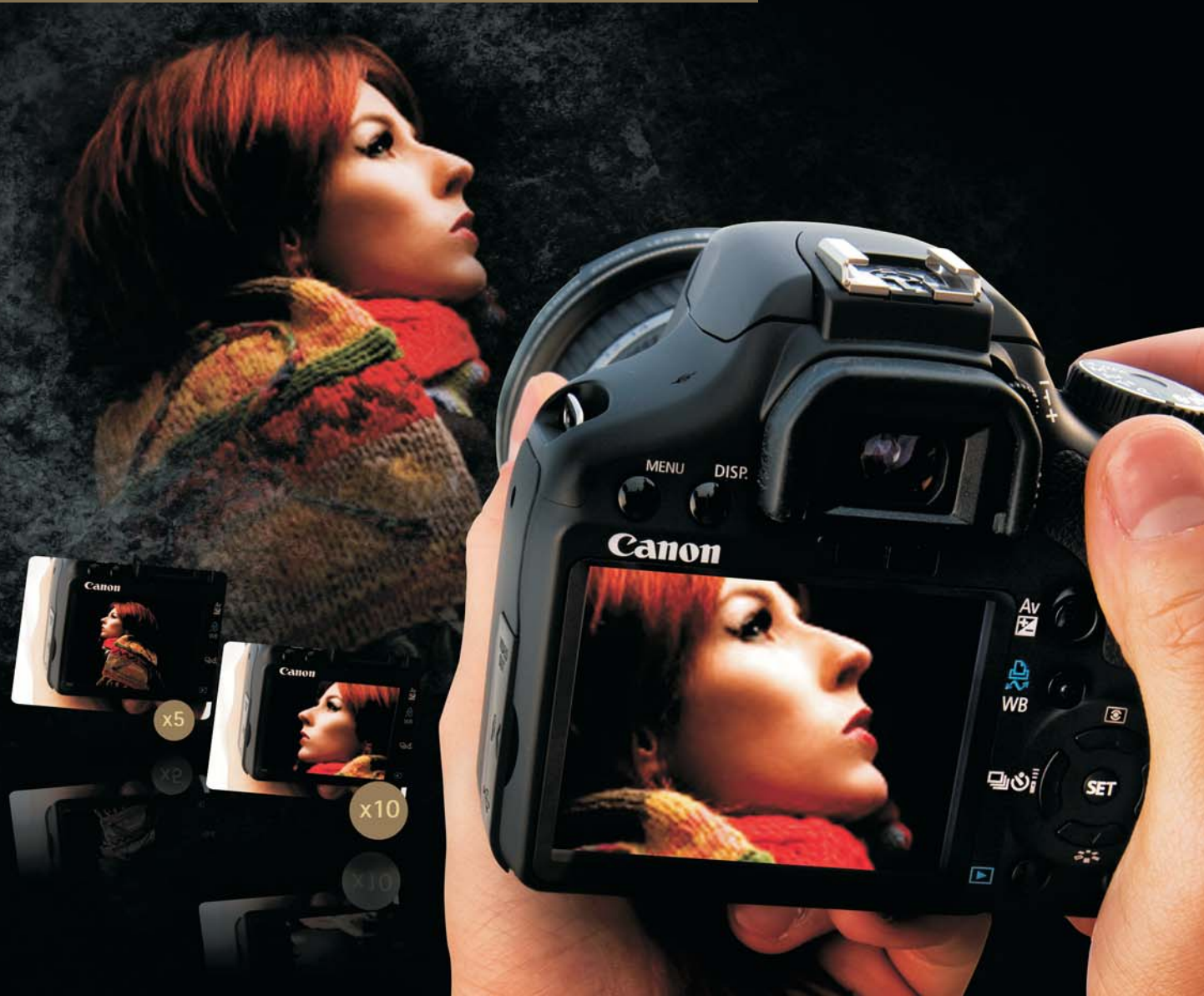
Pauses Live View mode temporarily so you can focus on the selected AF point

Live Mode

Perform autofocusing while viewing the real-time image on the LCD screen

Image Magnification for Precise Focusing

Enlarge the image on the LCD monitor up to 5x or 10x for more meticulous focus verification.



Exposure Simulation



By automatically adjusting the brightness of the LCD monitor, Live View allows the camera to simulate image exposure levels before shooting. This helps you to easily achieve perfect exposure prior to taking the shot.

Short Shutter-Release Time Lag

By using an electronic shutter function that enables shooting with the mechanical shutter open, the EOS 450D's shutter-release time lag is significantly reduced, allowing you to capture instantaneous moments.

Grid Display



The EOS 450D can display grid lines that divide the frame into 9 equal segments to help you achieve better image composition.

Remote Live View Shooting

With the EOS 450D connected to a computer via a USB connection, you can view a real-time image from the camera on your computer monitor using the EOS Utility software. This allows you to compose your images on larger displays and is useful in situations where perfect focusing is absolutely critical.



PICTURE STYLE

YOUR IMAGES YOUR STYLE



Similar to how photographers choose different types of film to match their shooting objectives, Picture Style helps you achieve the same result with a choice of preset image styles. Each Picture Style setting is a combination of processing parameters and colour matrix settings designed for a specific shooting condition.

Standard

Landscape

Portrait

Neutral

Faithful

Monochrome



For crisp, vivid and sharply focused images



For images with enhanced sharpness, and natural yet vivid blues and greens



Uses a softer tone to give skin a healthy glow, skin and hair appear smoother as well



Natural colour reproduction for more subdued images, ideal for post-processing



High accuracy colour reproduction faithful to the original



For black & white or sepia images

Monochrome Effects



Black and White



Sepia

In Monochrome Picture Style mode, additional filter and toning effects are also included, offering you more ways of creative expressions.

Filter Effects: Yellow, Orange, Red, Green
Toning Effects: Sepia, Blue, Purple, Green

Customising Picture Style Files

For greater personalisation, the EOS 450D has 3 user-defined Picture Style settings that you can customise according to your own preference and save to the camera for future use.

The following Picture Style parameters can be changed:

Sharpness: 0 to 7

Saturation: -4 to +4

Contrast: -4 to +4

Colour Tone: -4 to +4



You can also download additional Picture Styles from the Canon website and save them as one of the user-defined settings. Available styles include Nostalgia, Clear, Twilight, Emerald & Autumn Hues.

<http://web.canon.jp/imaging/picturestyle/index.html>

Picture Style Editor

The Picture Style Editor software lets you create your own Picture Styles with colours chosen according to your preferences. Your Picture Style settings can then be loaded into the camera for use just like any of the user-defined ones.

VERSATILE IMAGE CONTROL FOR ANY SITUATION

What sets a digital SLR apart from compact cameras is the level of control you have with them. This gives you unlimited ways to shoot, allowing you to create a variety of moods and effects for your images.

12

Shooting Modes

The EOS 450D has a wide range of shooting modes that give you optimal camera settings to suit different shooting situations.

Full Auto The camera chooses the appropriate combination of shutter speed and aperture size for optimal exposure.

Program AE Adjust the aperture size and shutter speed combination while maintaining a constant exposure value.

Shutter-Priority AE (Tv) Choose the shutter speed while the camera adjusts aperture size accordingly

Aperture-Priority AE (Av) Select the aperture size while the camera adjusts shutter speed accordingly

Depth-of-field AE Use this mode to create a custom "zone of sharpness"

Manual Exposure (including Bulb Mode) Set both the shutter speed and aperture size to your desired values

Programme Image Control Modes Portrait, Landscape, Close-up, Sports, Night Portrait, Flash OFF



Full Auto

Program AE

Shutter-priority AE

Aperture-priority AE

Manual Exposure

Depth-of-field AE

Flash Off

Night Portrait

Sports

Close-up

Landscape

Portrait

Metering Modes

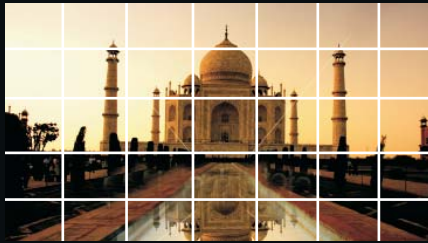
With the new inclusion of Spot metering, the EOS 450D now offers you 4 metering modes for more precise exposure control, similar to that of higher-end digital SLR cameras.

SPOT METERING



Offers pinpoint control for situations where metering of a specific aspect of the composition is required. Approximately 4 percent of the image is metered, as indicated by the circle in the centre of the viewfinder.

EVALUATIVE METERING



Analyses light in 35 zones within the composition with a particular emphasis on the AF point selected. This prioritises the subject for metering when necessary to compensate for drastic shifts in lighting.

PARTIAL METERING



Uses approximately 9 percent of the image for light metering, as indicated by a circle in the centre of the viewfinder.

CENTRE-WEIGHTED AVERAGE METERING



Analyses light in the entire image composition, with emphasis on the centre of the images; widely used by professional photographers.



White Balance

Get optimum colour tones every time no matter what the environment. The EOS 450D is loaded with several White Balance options that enable you to capture the mood and ambience of the surroundings in your images. Play around with different options to get more interesting effects.

White Balance Modes:

- | | | |
|----------|-------------------|--------|
| Auto | Cloudy | Flash |
| Daylight | Tungsten Light | Custom |
| Shade | Fluorescent Light | |



DESIGNED FOR MAXIMUM PERFORMANCE

With all the new features and advanced technologies included in the EOS 450D, we had to make sure the camera looked as good as it worked. And we did.

Sleek, Lightweight & Ergonomic Design

Incorporating sleek curves for a stylishly modern look, the EOS 450D's smooth and seamless design is a classic reinvented. Its satin black exterior adds a touch of class befitting this high-tech marvel and is guaranteed to turn heads.

Despite the increased functionality, the EOS 450D weighs in at only 475g thanks to a durable yet lightweight polycarbonate resin exterior. This makes the camera extremely portable and suitable for use anywhere and at any time.

Ergonomically, the EOS 450D is designed to fit snugly in the palm of your hand. Holding comfort has been improved with a rubberised grip and a thumb rest located at the back of the camera, while the reshaped grip is also taller and gives users a more stable hold on the camera.



Extra Large 3" LCD Screen



See more with the EOS 450D's large 3" high-precision LCD screen. With the inclusion of Live View mode, the role of the LCD screen is now more important than ever.

Featuring approximately 230,000 pixels for extraordinarily sharp images and a wider viewing angle of 170 degrees in all directions, checking your images or shooting settings is easy under any condition. The EOS 450D's screen is also 30% brighter than the 400D, while still offering you 7 selectable levels of brightness.

High-Precision Viewfinder



The EOS 450D's electronic viewfinder provides approximately 95% view coverage and an improved 0.87x magnification. Brightness level of the viewfinder is also increased, while its precision matte screen makes manual focusing easier and also facilitates auto-focusing.

Compatible with SD Memory Cards



The EOS 450D now uses the smaller and lighter SD memory cards instead of the bulkier CompactFlash variant. Not only does this allow the camera to have a slimmer profile, it is also good news for users of compact digital cameras making the jump to digital SLRs as they can still use their SD cards.

For snap-happy users, the EOS 450D also supports the new SDHC cards with higher capacities of 2GB and above for more shooting capacity.

New Higher Capacity Battery



The EOS 450D sports a newly developed 1080mAh Li-ion battery (LP-E5) with a 50% higher capacity that not only enables it to cope with the power demands of Live View, but also increases the number of images that can be shot on a single charge.

*SD logo is a trademark.

EOS INTEGRATED CLEANING SYSTEM

CRYSTAL CLEAR IMAGES
EVERY TIME

Like most DSLR cameras with interchangeable lens mounts, dust particles tend to accumulate on the camera's sensor over time. This can cause dust shadows to appear on your otherwise perfect images.

To compensate for this, the EOS 450D has incorporated a comprehensive set of measures in the form of both hardware and software to combat dust generation. We call this the EOS Integrated Cleaning System.

Anti-Dust Material Construction

As the first line of defence, the EOS 450D is made using materials and mechanisms that reduce the generation of dust inside the camera. Certain parts also contain a coating that prevents dust from sticking to them.

Self Cleaning Sensor Unit



To remove dust accumulated on the CMOS sensor, the EOS 450D ultrasonically vibrates its low-pass filter to shake off any dust that has adhered to it.

This cleaning method is automatically activated when the camera is powered on or off, and can also be used anytime dust seems to pose a problem.

Dust Delete Function



Extremely sticky dust (also called 'difficult dust') can be made inconspicuous in images taken by the EOS 450D. The camera's Dust Delete Function can detect and register the location and size of dust particles adhering to the CMOS sensor during each shot and appends this data to the image file.

When you load the images in the Digital Photo Professional software, it will detect the dust delete data and carry out dust deletion at the location of the image where the dust particles were registered.

Manual Sensor Cleaning

This function raises the mirror so you can use a lens blower to remove larger dust particles that may have stuck to the EOS 450D's CMOS sensor.

INTELLIGENT LIGHTING FEATURES



Without Auto Lighting Optimizer



With Auto Lighting Optimizer

Auto Lighting Optimizer

Not satisfied with the way your shot turned out? Let the EOS 450D fix it for you. The Auto Lighting Optimizer function automatically corrects the brightness and contrast of the image to give you a better result. Face detection capability also detects backlit faces and corrects them automatically to prevent underexposure.

Superb Flash Performance

With a powerful built-in retractable flash, the EOS 450D is perfectly equipped for shooting in low light conditions. It has a quick 3-sec recycling time and a maximum X-sync speed of 1/200 sec, and is compatible with the E-TTL II autoflash system.

Various flash options are also at your disposal for you to get the best results from your EOS 450D:

- Flash exposure compensation (Up to ± 2 stops in 1/3 or 1/2-stop increments)
- Flash exposure lock (FE lock)
- Red-eye reduction

Compatible with Speedlite

Need to brighten up your image even more? The EOS 450D incorporates a flash hotshoe that you can attach an EX series Speedlite flash to for even greater flash performance.

When a Speedlite 580EX II is connected to the EOS 450D, the following settings are available to you:

External flash control

- Flash mode
- Sync setting
- Flash exposure bracketing
- Flash exposure compensation
- Autoflash system
- Zoom
- Wireless flash

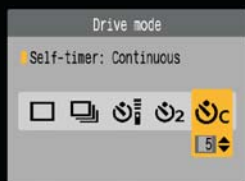


Speedlite 580EX II

ENHANCEMENTS FOR GREATER EASE OF USE

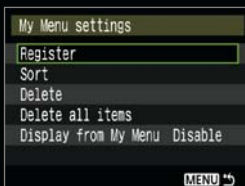
The following features were added to the EOS 450D to make your shooting experience a little easier, and a whole lot more fun.

Multi-shot Self-timer Mode



The EOS 450D has a 10-sec and 2-sec self-timer mode, which is an effective way to prevent blurring caused by camera shake during shutter release. Continuous shooting is also possible when in self-timer mode.

My Menu



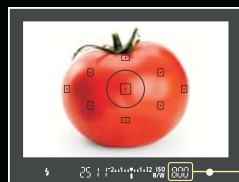
My Menu lets you group your most frequently-used menu items into a personal list for easier access.

New Status Display



The status display has been revamped for greater readability, and you can customise the colour scheme to your liking. When connected to certain Speedlite models, flash settings can also be adjusted via the EOS 450D's screen.

ISO Speed in Viewfinder



With the larger viewfinder, the EOS 450D now displays more information such as the ISO speed even when Auto ISO is selected.

ISO speed

High ISO Noise Reduction

You have the option of adding an extra level of noise reduction when shooting at a high ISO setting. When High ISO speed noise reduction is set, the maximum burst during continuous shooting is reduced to 3 shots and white balance bracketing is disabled.

EOS 450D Custom Functions



Have a personal preference about the way some of the EOS 450D's functions work? The camera's extensive selection of Custom Functions lets you personalise the camera so that it works just the way you want it to.

EOS 450D Custom

C.Fn	Function	Settings	
01	Exposure level increments	0	1/3-stop
		1	1/2-stop
02	Flash sync. speed in Av mode	0	Auto
		1	1/200 sec. (fixed)
03	Long exp. noise reduction	0	Off
		1	Auto
		2	On
04	High ISO speed noise reduction*	0	Off
		1	On
05	Highlight tone priority*	0	Disable
		1	Enable
06	Auto Lighting Optimizer*	0	Enable
		1	Disable
07	AF-assist beam firing	0	Enable
		1	Disable
		2	Only external flash emits
08	AF during Live View shooting*	0	Disable
		1	Quick mode
		2	Live mode
09	Mirror lockup	0	Disable
		1	Enable
10	Shutter button / AE lock button	0	AF/AE lock
		1	AE lock / AF
		2	AF/AF lock, no AE lock
		3	AE/AF, no AE lock
11	SET button / Cross keys funct.	0	Normal (disabled)
		1	Change quality
		2	Flash exposure comp.
		3	LCD monitor On/Off
12	LCD display when power ON	4	Menu display
		0	Display
		1	Retain power OFF status
13	Add original decision data*	0	Off
		1	On

*New Custom Functions for EOS 450D

INTUITIVE PRINTING & TRANSFERRING FEATURES

The EOS 450D provides you with a variety of printing and connectivity functions to process your images easily and conveniently. For added ease of use, the handy Print/Share button gives you one-touch access to the camera's printing and images transfer functions.

18



Print Directly From Camera

You can print images directly from the EOS 450D by connecting it to a PIXMA printer or any other PictBridge compatible printer. Various printing features allow you to edit and customise your prints without a computer.

Print Layout:

- Border/borderless printing
- 2/4/8/9/16/20/35-image layout
- 35-image contact sheet
- Horizontal and vertical image trimming

New Printing Functions

Angle Correction

Horizontally corrects tilted images for printing (rotate up to ± 10 degrees in 0.5 degree increments)

Printing Effects Preview

Preview the results of printing effects on the LCD monitor prior to printing (except for Face Brightener and Red-eye Correction)

Image Transfer

The EOS 450D provides you with many ways to transfer your images from your camera to a computer using the USB 2.0 Hi-Speed interface. You can transfer only selected images, all images, or images only that haven't been transferred previously.

Once your images are in your computer, you can use the software suite included in the EOS DIGITAL Solution Disk to process your images (i.e. convert RAW to JPEG, carry out Dust Deletion) and ready them for further editing or presentation.



Printing Effects:

- Brightness
- Levels
- Contrast
- Colour Saturation
- Colour Tone
- Colour Balance
- Red-eye Correction
- Face Brightener



Before Red-eye Correction



After Red-eye Correction



Before Face Brightener



After Face Brightener

THE EOS SYSTEM – EXPAND YOUR IMAGING ABILITY

Comprehensive Range of Lenses for EOS DSLR Cameras

For fast and precise focusing, the EOS 450D uses a newly developed high-speed AF system with 9 AF points. With any f/2.8 or larger aperture lenses, the centre AF point works as a high-precision, cross-type sensor for extraordinary focusing precision. The AF system also automatically corrects slight shifts in focus caused by different light sources to give you more consistent auto-focusing.

20



EOS Solution Disk

A suite of applications are included on the EOS Solution Disk that comes with your EOS EOS 450D to help you transfer and process your images after you are done shooting. Fully compatible with both Windows and Macintosh systems, the disk consists of the following software:

- **Digital Photo Professional**
Convert RAW files for use, performs Dust Delete Function and various other image adjustments
- **Zoom Browser Ex** (For Windows)
- **Image Browser** (For Mac OS)
- **EOS Utility**
- **Picture Style Editor**
- **Photostitch**
- **Original Data Security Tools** (For Windows)
- **Wireless File Transmitter (WFT) Utility**
- **Camera Drivers** (For Windows)

EOS 450D Optional Accessories



Car Battery Charger (CBC-E5)

Charge the EOS 450D's battery using power from a car battery. Compatible with both 12 V and 24 V car batteries.



Battery Grip (BG-E5)

This new battery grip can take in two LP-E5 batteries, or 6 AA batteries using a different slot-in insert, and fits seamlessly into the battery bay.



Semi-hard Case (EH19-L)

Protects your EOS 450D and the attached lens when not in use.

Eyepiece Extender (EP-EX15II)

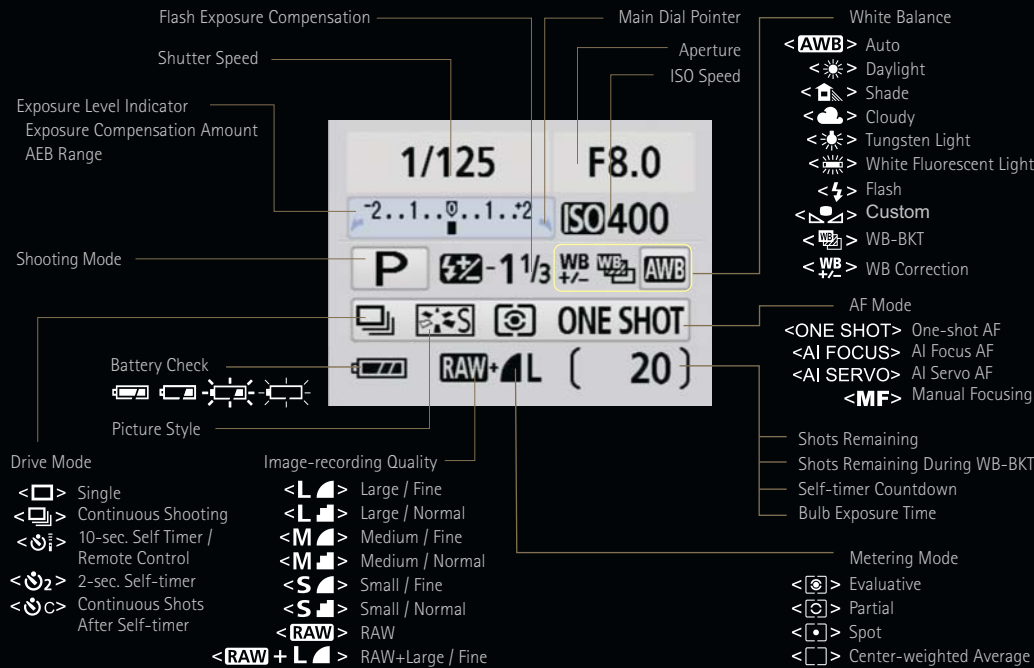
Makes looking through the viewfinder more comfortable, especially useful for eyeglasses wearers.



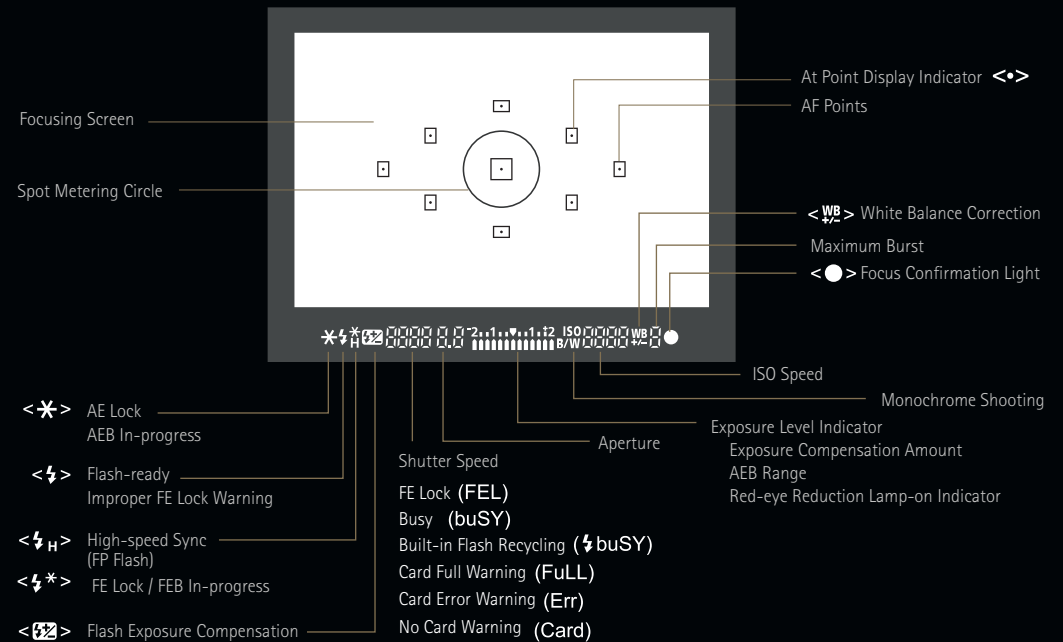
NOMENCLATURE



LCD PANEL INFORMATION



VIEWFINDER INFORMATION



SPECIFICATIONS

Type

Type: Digital AF/AE single-lens reflex camera with built-in flash
 Recording medium: SD and SDHC card
 Compatible lenses: Canon EF lenses (including EF-S lenses)
 Lens mount: Canon EF mount

Image Sensor

Type: High-sensitivity, high-resolution, single-plate, CMOS sensor
 Pixels: Effective pixels: Approx. 12.20 megapixels (4288 X 2854)
 Total pixels: Approx. 12.40 megapixels (4316 X 2876)
 Image size: 22.2mm x 14.8mm
 Aspect ratio: 2:3
 Colour filter system: RGB primary colour filter S
 Low-pass filter: Fixed position in front of the image sensor

Recording Format

Image Recording format: Complies with Design rule for Camera File system 2.0 and Exif 2.21

Image type: JPEG, RAW
 File size: (1) Large/Fine: Approx. 4.3MB (4272 X 2848 pixels), (2) Large/Normal: Approx. 2.2MB (4272 X 2848 pixels), (3) Medium/Fine: Approx. 2.5MB (3088 X 2056 pixels), (4) Medium/Normal: Approx. 1.3MB (3088 X 2056 pixels), (5) Small/Fine: Approx. 1.6MB (2256 X 1504 pixels), (6) Small/Normal: Approx. 0.8MB (2256 X 1504 pixels), (7) RAW: Approx. 15.3MB (4272 X 2848 pixels), (8) RAW/Large (Fine)*: 15.3MB + 4.3MB (4272 X 2848 pixels)
 *RAW and JPEG (Large/Fine) images are recorded simultaneously.

File numbering: Consecutive numbering, auto reset and manual reset
 Interface: USB 2.0 Hi-speed for video output (NTSC/PAL selectable)
 Color space: sRGB, Adobe RGB
 Picture style: Standard, Portrait, Landscape, Neutral, Faithful, Monochrome
 User def.: 1-3

White Balance

Settings: Auto (AWB), Daylight, Shade, Cloudy, Tungsten, Light, White Fluorescent Light, Flash, Custom (Custom WB)
 Auto white balance: Auto white balance with the image sensor
 Colour temperature compensation: White balance correction: +1/3 in full increments
 White balance bracketing: +1/3 stops in full increments
 *Blue/amber direction or magenta/green direction possible

Viewfinder

Type: Pentamirror, eye-level
 Coverage: 95% vertically and horizontally with respect to the effective pixels
 Magnification: 0.87x (1m diopter with 50mm lens at infinity)
 Eye point: 19mm
 Dioptic adjustment range: -3.0m⁻¹ - +1.0m⁻¹ diopter
 Focusing screen: Fixed
 Mirror: Quick-return half mirror (Transmittance: reflectance ratio of 40:60)
 Viewfinder information: AF information (AF points, focus confirmation light)
 Exposure information (shutter speed, aperture value, ISO speed, AE lock, exposure level, spot metering circle, exposure warning)
 Flash information (flash ready, flash exposure compensation, high speed sync, EF lock, red-eye reduction light)
 Image information (Monochrome shooting, maximum burst (1 digit display), white balance correction, SD card information)
 Depth-of-field preview: Enabled with depth-of-field preview button

Autofocus

Type: TTL-CT-SIR AE-dedicated CMOS sensor
 AF points: 9
 AF working range: EV 0.5 - 18 (at 23°C/73°F, ISO 100)
 Focusing modes: One-Shot AF, AI Servo AF, AI Focus AF, Manual focusing (MF)
 Automatic selection, manual selection
 AF point selection: Superimposed in viewfinder and indicated on LCD panel
 Active AF point indicator: Intermittent fringing of built-in flash
 AF-assist beam: Effective range: Approx. 4.0m/13.1 ft. at centre, approx. 3.5m/11.5 ft. at periphery (with an EOS-dedicated Speedlite attached, the Speedlite's AF-assist beam is emitted instead)

Exposure Control

Metering system: TTL full aperture metering with 35-zone SPC
 (1) Evaluative metering (linkable to all AF points)
 (2) Partial metering (approx. 8% of viewfinder in centre)
 (3) Spot metering (centre, approx. 4% of viewfinder)
 (4) Centre-weighted average metering
 Metering range: EV 1-20 (at 23°C/73°F with 50mm f/1.4 lens, ISO 100)
 Program AE, Shutter-priority AE, Aperture-priority AE, Depth-of-field AE, Full Auto (Program AE non-stilltable), Programmed Image Control Mode (Portrait, Landscape, Close-up, Sports, Night Portrait, Flash OFF), Manual exposure (including bulb), E-TTL II Autoflash program AE (evaluative & average metering)
 Automatically set, 100 - 1600 (in whole stop increment)
 +1/3 stops in 1/3-stop or 1/2-half increments, Manual and AEB correction
 Exposure modes: AE Lock: Auto AE Lock, Manual AE Lock

Shutter

Type: Vertical-travel, mechanic, focal-plane shutter with all speeds electronically controlled
 Shutter speeds: 1/4000 - 1/60 sec, X-sync at 1/200 sec, 1/4000 - 30sec.
 Bulb (total shutter speed range available range varies by shooting mode) 1/3-stop increments
 Shutter release: Soft-touch electromagnetic release
 Self-timer: 10-sec. delay, 2-sec. delay, self timer, 10-sec. delay + continuous shooting (2 to 10 shots)
 Remote control: Compatible with: Remote Switch RS-60E3 Remote Controller RC-5/RC-1

Built-in Flash

Type: Auto pop-up, retractable, built-in flash in the pentamirror
 Guide No.: 13/43 (at ISO 100 metres/feet)
 Recycling time: Approx. 3 sec.
 Flash-ready indicator: Flash-ready icon lights in viewfinder
 Flash coverage: 17mm focal length (equivalent to 27mm in 135 format)
 Flash metering system: E-TTL II autofocus (evaluative, average), FE lock

Image Format

Image Quality	Image Size	Compression	Compression Ratio
RAW	4272 X 2848 (approx. 12.20 megapixels)	Lossless RAW	Nil
Large	Fine	JPEG	Low Compression
	Normal (approx. 12.20 megapixels)	JPEG	High compression
Middle	Fine	JPEG	Low Compression
	Normal (approx. 6.30 megapixels)	JPEG	High compression
Small	Fine	JPEG	Low Compression
	Normal (approx. 3.40 megapixels)	JPEG	High compression

File Size and Recording Capacity

Image Quality	File Size (approx.)	Recording Capacity* (approx.)
RAW + JPEG (Large)	Fine 15.3MB + 4.3MB	99
RAW	Nil 15.3MB	120
JPEG Large	Fine 4.3MB	460
	Normal 2.2MB	880
JPEG Middle	Fine 2.5MB	770
	Normal 1.3MB	1470
JPEG Small	Fine 1.6MB	1190
	Normal 0.6MB	2290

* Recording capacity applies to a 2GB SD card based on Canon's testing standards.
 * The actual file size and recording capacity depends on the subject, shooting mode, ISO speed, and processing parameters.

External Speedlite

EOS-dedicated Speedlite: E-TTL autofocus set with EX-series Speedlites

Drive System

Drive modes: Single, Continuous, Self-timer 10-sec. Delay/Remote control, Self-timer 2-sec. delay, Self-timer 10-sec delay + continuous shooting (2 to 10 shots)
 Continuous shooting speed: Max. 3.5 fps (one shot AF or AI Servo AF)

LCD Monitor

Type: TFT color liquid-crystal monitor
 Screen size: 3.0 inches
 Dots: Approx. 230,000
 Image coverage: Approx. 100%
 Brightness control: 7 levels

Playback

Image display format: Single image (two types of single-image full display & two types of shooting information display), Index display (4-image index & 9-image index), Jump display (10/100 images display, shooting date)
 Highlight alert: With single-image display (info.) and single-image display, overexposed highlight areas will blink

Image Protection and Erase

Protection: Single images can be protected or cancelled
 Erase: Single image, selected images, unprotected images or all images in card can be erased (except protected images)

PictBridge

Compatible printers: PictBridge-compatible printers
 Printable images: JPEG images and RAW images
 Settings: Date, printing effects (image optimisation), print quantity, trimming, paper size, paper type, and page layout

Menus

Menu categories: Shooting menu, Playback, Setup, My Menu
 LCD monitor language: 20 languages provided (English, German, French, Dutch, Danish, Portuguese, Finnish, Italian, Norwegian, Swedish, Spanish, Greek, Russian, Polish, Hungarian, Czech, Simplified Chinese, Traditional Chinese, Korean and Japanese)

Power Source

Battery: Newly developed battery pack LP-E5
 Battery life:

Temperature	Shooting Conditions	
	AE 100%	AE 50%, FA 50%
Normal Shooting@ 23°C/73°C	Approx. 600	Approx. 500
Normal Shooting@ 0°C/32°C	Approx. 500	Approx. 400
Live View @ 23°C/73°C	Approx. 200	Approx. 190
Live View @ 0°C/32°C	Approx. 190	Approx. 180

* The above figures apply when a fully charged Battery Pack LP-E5 is used.

Battery check: Automatic
 Power saving: Provided. Power turns off after 1, 2, 4, 15 or off.
 Date/time back-up battery: Built-in secondary battery

Dimensions and Weight

Dimensions (W X H X D): 128.8 (W) x 97.5 (H) x 61.9 (D) mm / 5.1 (W) x 3.8 (H) x 2.4 (D) in.
 Weight: 475g / 16.8oz (body only)

Operating Environment

Operating temperature range: 0 - 40°C / 32 - 104 °F
 Operating humidity range: 85% or lower

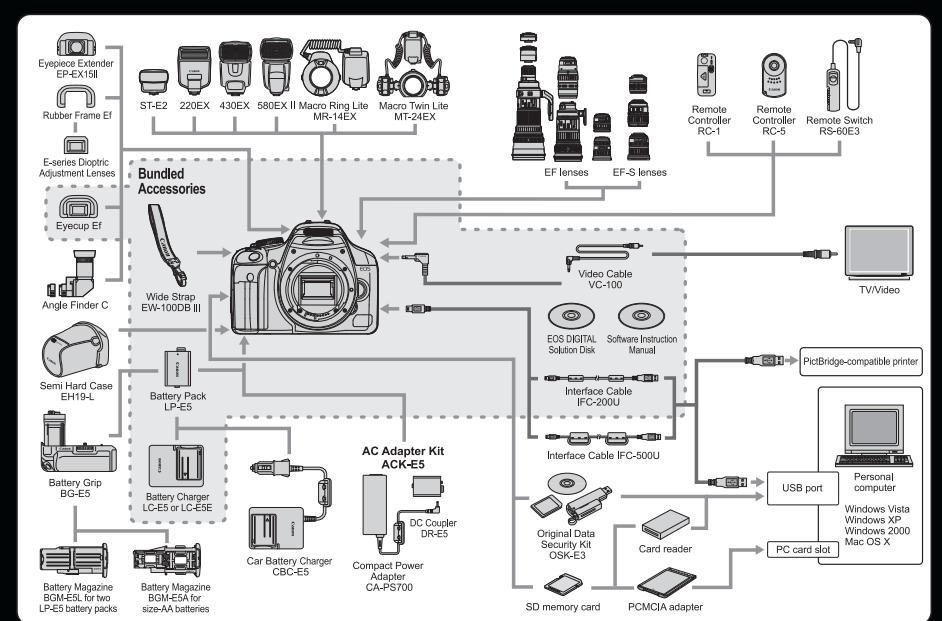
* All the specifications above are based on Canon's testing standards.
 * The camera's specifications and exterior are subject to change without notice.

EOS 450D BUNDLED APPLICATIONS

(EOS DIGITAL Solution Disk Ver.17.1)

	Windows		Macintosh	
	Version	Supported Operating Systems	Version	Supported Operating Systems
Zoom Browser EX / Image Browser	6.1		6.1	
Digital Photo Professional	3.3		3.3	
EOS Utility	2.3		2.3	
WFT Utility	3.2	2000/XP Vista	3.2	10.3 to 10.4
Original Data Security Utility Original Data Security Administrator	1.3		-	
Picture Style Editor	1.2		1.2	
Photo Stitch	3.1		3.2	
PTP WIA / TWAIN Driver	EOS 450D only		-	

SYSTEM CHART



Canon

**SOUTH & SOUTHEAST ASIA REGIONAL HEADQUARTERS
CANON SINGAPORE PTE. LTD.**

1 HarbourFront Avenue,
#04-01 Keppel Bay Tower,
Singapore 098632

<http://www.canon-asia.com>