



Canon

Delighting You Always



PIXMA

Quality. Promised.

Office All-in-One



MX517



MX437



MX377

MORE THAN PERFECTION ON PAPER

THE PIXMA BLACK SERIES



CANON'S PIXMA BLACK SERIES

OFFICE ALL-IN-ONE PRINTERS

The PIXMA **MX517**, **MX437** and **MX377** – are stylishly suited in just that: a deep, rich black. Yet they're completely enlightened when it comes to printing, scanning, copying, faxing and more.

These multifunction models flaunt advanced features that reduce work processes, such as Canon's unique FastFront design for the easy loading of paper or ink cartridges; the capability to print individual frames from HD movies; and perfect companion for both Apple and Android mobile devices.

Of course, all prints, copies, scans and faxes are produced at speed, with brilliantly clear text and bold, vivid images. There's a host of creative options too, which will bring anything from a personal project to a professional presentation to life!

MX517



Photo Print Speed

approx.
46sec.
Color
10x15cm (4x6") borderless

ISO Standard Speed

approx. **9.7ipm** approx. **5.5ipm**
Mono Color
Document Printing
Measured by ISO / IEC 24734 Standard

approx. **4.3ipm**
Color
ADF Copy
Measured by ISO / IEC 24735 Standard



TIME TO MEASURE UP

It's tough to find out whether a printer lives up to its speed claims, unless a universal benchmark is used. That's why Canon has adopted ISO standards for its inkjet printers – you can be sure you're getting precisely the performance you expect.

So demand an ISO-compliant device. It's the only way to decipher the real speed of your printer.

MX437

MX377



Photo Print Speed

ISO Standard Speed

approx.
46sec.

approx.
9.7ipm

approx.
5.5ipm

approx.
4.3ipm

Color
10x15cm (4x6") borderless

Mono
Document Printing
Measured by ISO / IEC 24734 Standard

Color
ADF Copy
Measured by ISO / IEC 24735 Standard

Photo Print Speed

ISO Standard Speed

approx.
46sec.

approx.
8.7ipm

approx.
5.0ipm

approx.
3.4ipm

Color
10x15cm (4x6") borderless

Mono
Document Printing
Measured by ISO / IEC 24734 Standard

Color
ADF Copy
Measured by ISO / IEC 24735 Standard

DIVINELY DIFFERENT

The special features of the PIXMA Black Series are as cool as their looks.



MOVIE MAGIC



Full HD Movie Print

*Only for ".mov" files created by Canon digital cameras. Requires Canon ZoomBrowser EX 6.5 or later, or Canon ImageBrowser 6.5 or later.

For starters, PIXMA Full HD Movie Print capability means you can transform moments captured in motion into striking stills.

You can even combine multiple frames in an action scene to summarize the entire sequence in a single shot, or extract individual frames - placing and cropping them as you please - to create a collage.

If a frame you've picked to print isn't sharp, the Full HD Movie Print function can automatically replace it with a clearer shot from the same sequence.

Clearer Images



Merge Frames



Layout



FUN FACTOR



Fun Filter Effect

With Fun Filter Effect, you can make fantastic photos funtastic too. Just choose from a host of special effects - such as Fish-Eye, Miniature, Toy Camera and more - then apply them to your images by following a few simple steps.

Fish-Eye



Miniature



Toy Camera



SPECIAL
FEATURES

INK IN A BLINK

The PIXMA MX517, MX437 and MX377 use Canon's new FINE™ cartridges, which deliver richer color reproductions – particularly in the red areas on plain paper. You will get images that are more brilliantly colored.

Meanwhile, a redesigned print head bumps up print speeds while maintaining that image quality. Each print head features microscopic nozzles fitted tightly together that release ultra-fine droplets to produce clearly defined text and smooth images, using Canon's pigment and dye-based inks.

The dye inks guarantee brilliant, naturally beautiful colors every time you print, while the black pigment ink ensures razor-sharp text when it's printed over a colored image.



COPY THAT



Get the real deal when you make copies with the PIXMA Black Series. These devices churn out perfect replicates of anything from color gradations to intricate line drawings.

In addition, the high-speed **Automatic Document Feeder (ADF)** makes multi-page copying and scanning so much faster and more efficient.

There's a **Resume Copy** feature too, which gives you a headstart on copying another document even as one is being completed.



PRINT
&
COPY

IT'S IN THE SCAN

With Canon's free mobile printing apps, not only allows you to print wirelessly² but also scan documents and images directly to any iOS or Android device.

CONNECTIVITY



Mobile Printing



Android OS¹



iOS

Get your Canon mobile printing apps here



QR code for Android



QR code for iOS

Alternatively, you may transfer your scanned documents and images directly to a thumb drive or memory card².

- ¹ Subject to Android device compatibility.
- ² Applies to PIXMA MX517 and PIXMA MX437 only.
- ³ Applies to PIXMA MX517 only.

USB
Flash Memory



USB Flash Drive²

Memory Card



Card Direct³

AUTO SCAN MODE



1200×2400dpi



Standard Scan Steps

- Set Original
- Select the Type of Original
- Preview
- Set Resolution
- Crop
- Set Suitable Image Processing
- Scan
- Save

Auto Scan Mode Scan Steps

- Set Original
- Click Scan Button**
Automatically recognizes the type of originals, scans and saves with suitable settings

The Auto Scan Mode automatically recognizes the item to be scanned and adjusts the settings. All that's left to do is touch a button to get the job done.

SCAN

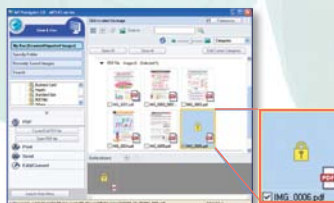
Add Security To Scanned PDF Files (Windows only)

Assign passwords to PDF files to limit access or restrict printing; provide various levels of access by creating multiple passwords for a single file.



Checkbox enables password to limit access

MP Navigator EX UI showing the checkbox that enables password



MP Navigator EX UI showing PDF files with passwords that limit access

GET THE MESSAGE

The PIXMA MX517, MX437 and MX377 are equipped with Canon's Super G3 fax feature, which transmits an A4 monochrome page in approximately 3 seconds per page.



You can be sure all messages come through clearly too, thanks to devices' fax memory of up to 50 pages and a function that lets users transfer stored faxes to a USB flash drive.



In addition, the coded speed dial feature accepts up to 20 numbers* so you can send out faxes in a jiffy, while the Automatic Document Feeder allows for continuous hands-free faxing.

* Applies to PIXMA MX517 only.

THE SAFE SIDE

You'll make no mistake with the PIXMA Black Series – literally. The machines' security features include a function that, when activated, requires each recipient's fax number to be re-entered so confidential faxes don't get sent to the wrong person.



Functions that prevent a FAX from being sent to the wrong location:

FAX number re-entry

The sender will be asked to re-enter the recipient's number for confirmation

1st



2nd



In case the 2nd number is different from the 1st one, the FAX isn't sent

Check RX FAX info

Checks whether the dialed number and the recipient's registered number are the same. If not, the FAX isn't sent



Will not send FAX

TTI FAX information 012345678



FAX

LOOK MA, NO CABLES

Stay in touch, even when you're out. For starters, its printers' wireless* capability enables you to work without the hassle of cables, or choose to link up to other users in a LAN network via the bundled utilities.

*Applies to PIXMA MX517 and PIXMA MX437 only.



Bluetooth® (Optional BU-30)



Also a snap: the devices' capability to print files straight from your Canon camera, a USB flash memory or any common memory card format*.

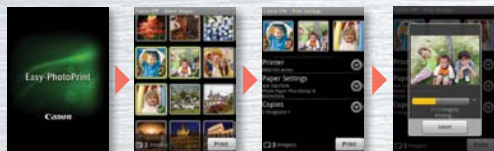
* PIXMA MX517 - PictBridge, USB Flash Memory and Memory Card.
PIXMA MX437 - PictBridge only.

Canon iEPP (For iOS)



1. Launch the app.
2. Select the photo.
3. Touch the "Print" key.

Canon EPP (For Android)*



1. Launch the app.
2. Select the photo.
3. Touch the "Print" key.

* Subject to Android device compatibility

You can easily snap photos using your Apple or Android mobile device, then print them directly to your PIXMA.

CHEW ON THIS



The printers* are compatible with Apple AirPrint, which means you can print whatever you need while you're on the go directly from your iPad, iPhone or iPod touch.

Printing is job is done quickly and seamlessly without the need to install software, drivers or cables.

Best of all, just about everything you might want to print is supported – from documents, to photos, web pages, material from apps and more.

* Applies to PIXMA MX517 and PIXMA MX437 only.

CONNECTIVITY



TOUCH AND GO

The PIXMA MX517, MX437 and MX377 are loaded with advanced features, but they're surprisingly simple to use.

For starters, a user-friendly desktop menu – the Solution Menu EX – provides one-touch access to a range of printing, scanning and web-based solutions.

Main screen



Catches the motion, tells the story



Adds artistic effects to photos just with a few clicks



Explore and print attractive materials



Offers comfortable operation with straightforward setting



Receives news and updates via RSS news feed from Canon



Shows how much you have been eco-conscious

FAST AND FUNCTIONAL



Replacing ink cartridges and loading paper can also be done in a jiffy with the simple flip-down FastFront design.



EASY
OPERATION

ENHANCED EASY-WEBPRINT EX

Clip and crop webpages, then arrange and print your selections on a single sheet with the Easy-WebPrint EX feature.

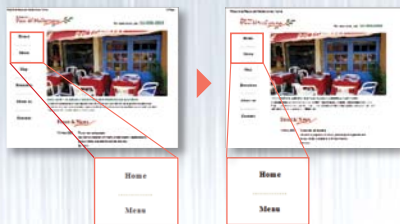


Easy-WebPrint EX



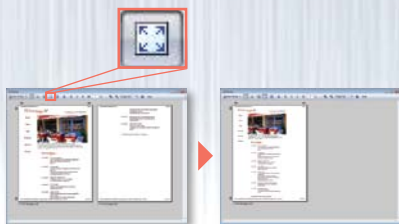
Gray-To-Black Legibility

Enhance the legibility of gray text on web pages by printing it in crisp, easy-to-read black.



Single Click Fit-To-Page

With one click, enlarge or reduce the size of clipped web content so that it fits onto a single sheet of paper.



Clip & Merge

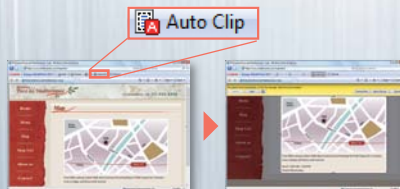
Save time, space and paper by clipping, editing, resizing and printing only what you want from web pages.

You can even insert images stored on your PC and rearrange the layout before printing.



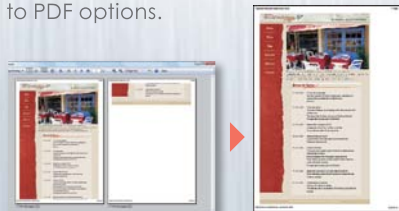
Auto Clipping

With one click, clip the main part of the web page for printing.



Save Paper

Paper-saving features include reduced fit-to-page layout and save to PDF options.



PICTURES PERFECT

The EasyPhotoPrint EX program says it all - it makes creating and printing photo albums, calendars, travel journals and other multifaceted projects really convenient.

Along with quick access to creative features such as the Fun Filter Effect, the program also lets you to tap into a supply of hundreds of thousands of quality Flickr® images and import them directly to your projects*.

*It is unlawful to reproduce or edit the copyrighted work of another person without permission from the copyright holder, except for personal use, use within the home, or other use within the limited scope as defined by the copyright. Additionally, reproducing or editing photographs of people may infringe on portrait rights.

SOFTWARE
&
TECHNOLOGY



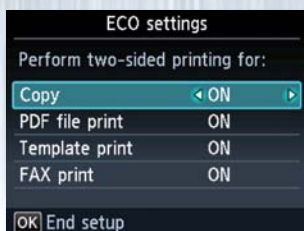
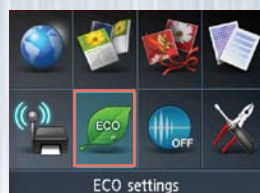
GREEN GENES

The PIXMA MX517, MX437 and MX377 comply to EU RoHS directives and the international Energy Star program, which means they're eco- and budget-friendly.



The machines' built-in ECO Mode and ECO Information innovations help reduce the use of energy and resources too – the printers down automatically when not in use for some time, and also calculate the amount of paper and CO₂ emissions saved.

ECO MODE*



Duplex Print

Easy settings for two-sided copying, PDF file printing, template print and FAX printing.

ECO INFORMATION*



Number Of Sheets Saved

CO₂ Reduction

Saved Number Of Sheets

Indicates the number of sheets saved by using Auto Duplex Print mode.

CO₂ Reduction

Indicates the amount of CO₂ emissions reduced by using less sheets with Auto Duplex printing.

* Applies to PIXMA MX517 only.

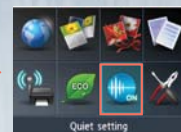
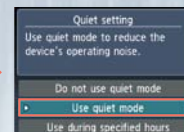
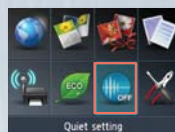
QUIET MODE

Need to work after hours? Turn on the Quiet Mode and let your device beaver away stealthily – you might even be able to grab forty winks in the meantime.

Home Screen*

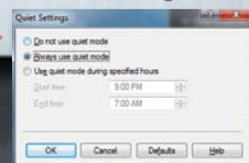
The Quiet Mode setting has been added to the home screen menu.

* Applies to PIXMA MX517 only.



Solution Menu EX

Open the dialog box by clicking the Quiet Setting icons.



ECO
FRIENDLINESS

THE DARK KNIGHT

Looking for the perfect home or office partner? The high performance PIXMA MX517 will ride to your rescue.

This All-In-One work warrior in mirror-finish armor features a Dual Function Panel with illuminated buttons that switches between Navigation and Numeric Keypad modes, making it doubly easy for users to operate the PIXMA MX517.

It deals with double-sided printing effectively too, thanks to the Auto Duplex Printing capability that allows printing on both sides of each sheet without any manual flipping.

PIXMA MX517

- Print speed: approx. 5.5ipm (color) and 9.7ipm (mono)
- Print resolution: 4800 x 1200 dpi resolution (maximum)
- Scan resolution: 1200 x 2400 dpi (CIS)
- Copy speed: 4.7ipm (color)
- Super G3 high-speed fax transmission
- 30-sheet (A4) Auto Document Feeder (ADF)
- Connectivity: Wi-Fi, wired LAN, PictBridge, Hi-Speed USB 2.0, memory card slots and Bluetooth (optional: BU-30)



2^{pl}
Technology

4800
dpi
Maximum

25"
TFT

Dual Function Panel

Wi-Fi
CERTIFIED

AirPrint

Mobile Printing

FastFront

Full HD Movie Print

Fun Filter Effect

Auto Duplex Print

ADF

Easy-WebPrint EX

FINE
Full photo-quality Inkjet
Nozzle Engineering

FINE Cartridge

ChromaLife100

BLACK BEAUTIES

Like that of their PIXMA Black Series peers, the forms and finishes of the PIXMA MX437 and MX377 make for stunning combinations.

But even more pleasing is their performance. These pretty workhorses trot out prints, copies, faxes and scans quickly and clearly, while a fully integrated, high-speed Automatic Document Feeder enables up to 30 sheets to be loaded at once.

PIXMA MX437

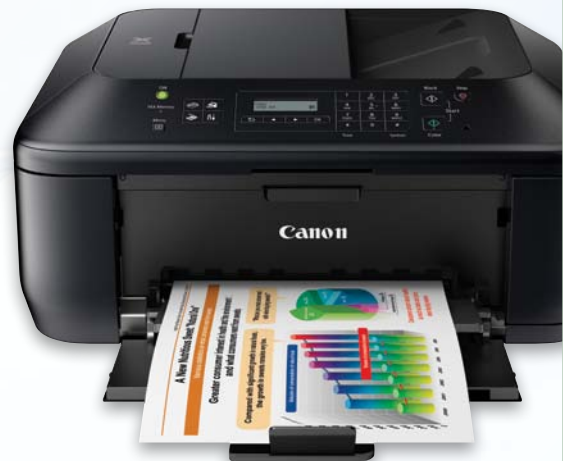
- Print speed: approx. 5.5ipm (color) and 9.7ipm (mono)
- Print resolution: 4800 x 1200 dpi (maximum)
- Scan resolution: 1200 x 2400 dpi
- Copy speed: 4.7ipm (color)
- Super G3 high-speed fax transmission
- 30-sheet (A4) Auto Document Feeder (ADF)
- Connectivity: Wi-Fi, PictBridge, Hi-Speed USB 2.0, and Bluetooth (optional: BU-30)

PIXMA MX377

- Print speed: approx. 5.0ipm (color) and 8.7ipm (mono)
- Print resolution: 4800 x 1200 dpi (maximum)
- Scan resolution: 1200 x 2400 dpi
- Copy speed: 4.0ipm (color)
- Super G3 high-speed fax transmission
- 30-sheet (A4) Auto Document Feeder (ADF)
- Connectivity: Hi-Speed USB 2.0



MX437



2pl
Technology

4800
Maximum
dpi

Wi-Fi
CERTIFIED



Mobile Printing

FastFront

Full HD Movie Print

Fun Filter Effect

ADF

Easy-WebPrint EX

FINE
Full photolithography Inkjet
Head Engineering

FINE Cartridge

ChromaLife100



MX377

*Wi-Fi, Apple AirPrint and Mobile Printing applies to PIXMA MX437 only.

CREATIVE
PARK
PREMIUM
FREE DOWNLOADS!

HIT IT OUT OF THE PARK

CREATIVE PARK PREMIUM
EXCLUSIVE ACCESS!



© Brown & Bigelow, Inc./D.P.A. Licensed by Cosmo Merchandising
© F.W. & Co.

™ & © Eric Carle, LLC.

© P & Co Ltd 2012

© F.W. & Co.
© LC 2012

© LC 2012

These printers and Canon Original Inks give you exclusive access to Canon's CREATIVE PARK PREMIUM website (via Solution Menu EX). It features magnificent photos and illustrations from world renowned artists. And it's yours **FREE!** This professional-quality content is available when all Canon Original Inks are properly installed. So bring out the best in yourself and your printer – visit Canon Creative Park Premium!

NOTE: CREATIVE PARK PREMIUM is a premium content service available exclusively to users only when all of the colors of genuine Canon Inks are installed.

CREATIVE PARK

www.canon.com/c-park



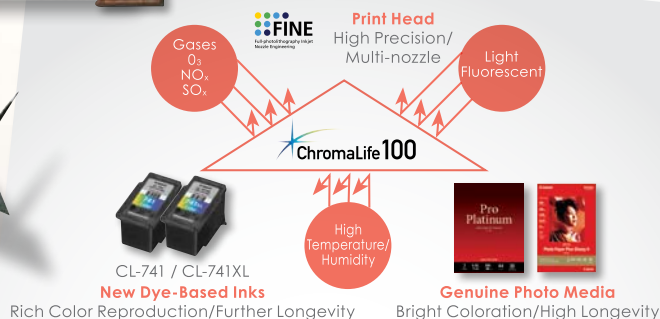
At Canon Creative Park, your creativity comes alive! Download everything from 3D paper projects to gift and card templates. Best of all, it's **FREE!**



FREE DOWNLOADS!
CREATIVE
PARK

Let your imagination run wild with Creative Park Premium, an exclusive online service for PIXMA MX517, MX437 and MX377 owners that gives you access to a wide selection of professional photos and illustrations from world-renowned artists.

These free downloads can be used to create original prints, posters, cards and other customized pieces.



CHROMALIFE-LONG IMAGES

Canon's distinctive **ChromaLife100** technology ensures the memories live on. It combines dye-based inks and genuine photo paper to produce non-fading prints that will last up to 100 years under proper storage conditions.

Gas Fastness Approx.
10 Years



No noticeable color change

*Under proper storage conditions. See specifications for details.

THE PERFECT FINISH

Get the most out of your device – pair it with Canon's extensive range of paper media that includes anything from super high gloss photo paper and photo stickers.

Canon's FINE™ cartridges also offer great performance and hassle-free maintenance.

Photo Printing



PT-101
Photo Paper
Pro Platinum
(Super High Gloss)

- 300g/m²
- 4x6", A4



PP-201
Photo Paper
Plus Glossy II

- 260g/m²
- 4x6", A4



GP-501
Glossy Photo
Paper

- 170g/m²
- 4x6", A4



SG-201
Photo Paper
Plus Semi-Gloss

- 270g/m²
- 4x6", 8x10", A4

Special Projects



MP-101
Matte Photo
Paper

- 170g/m²
- 4x6", A4



TR-301
T-Shirt
Transfers

- 143g/m²
- A4
(10 sheets/pack)



PS-101
Photo Stickers

- 190g/m²
- Stickers
(5 sheets/pack)
(16 photo
stickers/sheet)



HR-101N
High Resolution
Paper

- 106g/m²
- A4

Ink Cartridges

PG-740



Optional
PG-740XL



CL-741



CL-741XL



*CHROMALIFE100 PROPER STORAGE CONDITIONS

100-year life in an album:

<Criteria for estimation> The permanence presented above is estimated using an accelerated dark storage test and designed for silver-halide photos (ISO/FD18909). Samples are printed with an optical density of 1.0 (each black, cyan, magenta, yellow) and kept in a controlled environment of high temperature and 50% relative humidity. The test environment is designed to accelerate color fading. The rate of the decrease in the optical density and the rate of yellow discoloration of the paper are measured. Finally, the results are extrapolated to the length of time when a printed image is kept in an environment of 23°C 50% RH.

30-year lightfastness:

<Criteria for estimation> When displayed in a glass frame in a typical indoor space (estimating 500 lux / 10 hours per day) without direct sunlight. Estimated lightfastness is made under the following test conditions. Light source: White fluorescent light 70,000 lux; Temperature: 24°C; Humidity: 60% RH; A 2mm thick glass is placed on the sample with an air gap between the glass and the sample during accelerated testing.

10-year gas fastness:

<Criteria for estimation> Estimated gas fastness is made under the following test conditions: Temperature (24°C) and humidity (60% RH) are controlled in an environment of mixed gases of O₃, NO_x and SO_x. The ratio of the gases is typical to indoor air composition (O₃: NO_x: SO_x = 3: 19: 1) with 100 times concentration in order to accelerate fading.

<Criteria for estimation of print longevity>

Estimates for image permanence are made using the Wilhelm Imaging Research, Inc. Endpoint criteria: Accumulated illuminance causes a monochromatic / reflective optical density loss of 20-35% (figures set respectively for each color, starting density of 1.0). Accumulated illuminance causes a difference in color balance of yellow, magenta and cyan (each component in composite black) of 12-18%.

<Tips>

Making your printed images last longer: Light, environmental gases, high temperature and humidity can accelerate color fading. When displaying your photographs, avoid high intensity lighting and use glass-filtered frames. Photos stored in the dark, using archival quality albums or storage materials, will tend to last longer than photos that are exposed to light. Avoid high temperatures and high humidity to promote the image permanence of your photos.

Note: The image permanence estimates presented above may vary depending on display/ storage conditions. The expressed numbers of years estimates are the result of stimulated, accelerated tests conducted by Canon Inc. and do not represent a product guarantee.

PAPER
MEDIA &
CARTRIDGES



SPECIFICATIONS

Model			PIXMA MX517
PRINT			
Maximum Printing Resolution			4800 (horizontal) ¹ x 1200 (vertical) dpi
Print Head / Ink	Type		FINE™ Cartridge
	Total Number of Nozzles		1,792
	Ink Droplet Size (minimum)		2pl
	Ink Tank		PG-740, CL-741 (PG-740XL, CL-741XL Optional)
Print Speed	Document: Color ^{*2}	ESAT / Simplex	approx. 5.5ipm
	Document: B/W ^{*2}	ESAT / Simplex	approx. 9.7ipm
	Photo (4x6") ^{*2}	PP-201 / Borderless	approx. 46sec.
Printable Width			Up to 203.2mm (8 inches), Borderless: Up to 216mm (8.5 inches)
Printable Area	Borderless Printing ^{*3}		Top / Bottom / Right / Left margin: each 0mm (Supported Paper Size: A4, LTR, 4x6", 5x7", 8x10")
	Bordered Printing		Top margin: 3mm, Bottom margin: 5mm Left / Right margin: each 3.4mm (LTR, LGL: Left: 6.4mm, Right: 6.3mm)
	Bordered Auto Duplex Printing		Top margin: 5mm, Bottom margin: 5mm, Left / Right margin: each 3.4mm (LTR, LGL: Left: 6.4mm, Right: 6.3mm)
Recommended Printing Area			Top margin: 32.5mm / Bottom margin: 33.5mm
Paper Size ^{*4}			A4, A5, B5, LTR, LGL, 4x6", 5x7", 8x10", Envelopes (DL, COM10)
Paper Handling (Front Tray) (Maximum Number)	Plain Paper		A4, A5, B5, LTR = 100, LGL = 10
	High Resolution Paper (HR-101N)		A4 = 80
	Photo Paper Pro Platinum (PT-101)		4x6" = 20, A4 = 10
	Photo Paper Plus Glossy II (PP-201)		4x6" = 20, A4 = 10
	Photo Paper Plus Semi-Gloss (SG-201)		4x6" = 20, A4 / 8x10" = 10
	Glossy Photo Paper "Everyday Use" (GP-501)		4x6" = 20, A4 = 10
	Matte Photo Paper (MP-101)		4x6" = 20, A4 = 10
	Photo Stickers (PS-101)		1
	T-Shirt Transfer (TR-301)		1
	Envelope		European DL / US Com. #10 = 5
Support Media for Auto Duplex Printing	Type		Plain Paper (Bordered)
	Size		A4, A5, B5, LTR
Paper Weight	Rear Tray		Plain Paper: 64-105 g/m ² , Canon specialty paper: max paper weight: approx. 300g/m ² (Photo Paper Pro Platinum PT-101)
Ink End Sensor			Dot count
Print Head Alignment			Manual
SCAN			
Scanner Type			Flatbed & ADF
Scanning Method			CIS (Contact Image Sensor)
Optical Resolution ^{*5}			1200 x 2400dpi
Selectable Resolution ^{*6}			25 - 19200dpi
Scanning Bit Depth (Input / Output)	Grayscale		16 / 8bit
	Color		48 / 24bit (RGB each 16bit / 8bit)
Line Scanning Speed ^{*7}	Grayscale		1.1 ms / lines (300dpi)
	Color		3.4 ms / lines (300dpi)
Scanning Speed ^{*8}	Reflective	A4 Color / 300dpi	approx. 15sec.
Maximum Document Size	Flatbed		A4, LTR (216 x 297mm)
	ADF		A4, LTR, LGL
COPY			
Maximum Document Size			A4, LTR (216 x 297mm) (ADF = A4, LTR, LGL)
Compatible Media	Size		A4, A5, B5, LTR, LGL, 4x6", 5x7"
	Type		Plain Paper
			Photo Paper Pro Platinum (PT-101)
			Photo Paper Plus Glossy II (PP-201)
			Photo Paper Plus Semi-Gloss (SG-201)
			Glossy Photo Paper "Everyday Use" (GP-501)
			Matte Photo Paper (MP-101)
Image Quality			3 positions (Fast, Standard, High)
Density Adjustment			9 positions, Auto intensity (AE copy)* *Not supported for ADF
Copy Speed ^{*9}	Document: Color	sFCOT / Simplex	approx. 21sec.
	Document: Color	sESAT / Simplex	approx. 4.7ipm
	Document (ADF): Color	ESAT / Simplex	approx. 4.3ipm
Multiple Copy	Black / Color		max. 99 pages



PIXMA MX437	PIXMA MX377
4800 (horizontal) ¹ x 1200 (vertical) dpi	4800 (horizontal) ¹ x 1200 (vertical) dpi
FINE™ Cartridge	FINE™ Cartridge
1,792	1,792
2pl	2pl
PG-740, CL-741 (PG-740XL, CL-741XL Optional)	PG-740, CL-741 (PG-740XL, CL-741XL Optional)
approx. 5.5ipm	approx. 5.0ipm
approx. 9.7ipm	approx. 8.7ipm
approx. 46sec.	approx. 46sec.
Up to 203.2mm (8 inches), Borderless: Up to 216mm (8.5 inches)	Up to 203.2mm (8 inches), Borderless: Up to 216mm (8.5 inches)
Top / Bottom / Right / Left margin: each 0mm (Supported Paper Size: A4, LTR, 4x6", 5x7", 8x10")	Top / Bottom / Right / Left margin: each 0mm (Supported Paper Size: A4, LTR, 4x6", 5x7", 8x10")
Top margin: 3mm, Bottom margin: 5mm Left / Right margin: each 3.4mm (LTR, LGL: Left: 6.4mm, Right: 6.3mm)	Top margin: 3mm, Bottom margin: 5mm Left / Right margin: each 3.4mm (LTR, LGL: Left: 6.4mm, Right: 6.3mm)
NA	NA
Top margin: 32.5mm / Bottom margin: 33.5mm	Top margin: 32.5mm / Bottom margin: 33.5mm
A4, A5, B5, LTR, LGL, 4x6", 5x7", 8x10", Envelopes (DL, COM10)	A4, A5, B5, LTR, LGL, 4x6", 5x7", 8x10", Envelopes (DL, COM10)
A4, A5, B5, LTR = 100, LGL = 10	A4, A5, B5, LTR = 100, LGL = 10
A4 = 80	A4 = 80
4x6" = 20, A4 = 10	4x6" = 20, A4 = 10
4x6" = 20, A4 = 10	4x6" = 20, A4 = 10
4x6" = 20, A4 / 8x10" = 10	4x6" = 20, A4 / 8x10" = 10
4x6" = 20, A4 = 10	4x6" = 20, A4 = 10
4x6" = 20, A4 = 10	4x6" = 20, A4 = 10
1	1
1	1
European DL / US Com. #10 = 5	European DL / US Com. #10 = 5
NA	NA
NA	NA
Plain Paper: 64-105 g/m ² , Canon specialty paper: max paper weight: approx. 300g/m ² (Photo Paper Pro Platinum PT-101)	Plain Paper: 64-105 g/m ² , Canon specialty paper: max paper weight: approx. 300g/m ² (Photo Paper Pro Platinum PT-101)
Dot count	Dot count
Manual	Manual
Flatbed & ADF	Flatbed & ADF
CIS (Contact Image Sensor)	CIS (Contact Image Sensor)
1200 x 2400dpi	1200 x 2400dpi
25 - 19200dpi	25 - 19200dpi
16 / 8bit	16 / 8bit
48 / 24bit (RGB each 16bit / 8bit)	48 / 24bit (RGB each 16bit / 8bit)
1.1 ms / lines (300dpi)	1.1 ms / lines (300dpi)
3.4 ms / lines (300dpi)	3.4 ms / lines (300dpi)
approx. 15sec.	approx. 15sec.
A4, LTR (216 x 297mm)	A4, LTR (216 x 297mm)
A4, LTR, LGL	A4, LTR, LGL
A4, LTR (216 x 297mm) (ADF = A4, LTR, LGL)	A4, LTR (216 x 297mm) (ADF = A4, LTR, LGL)
A4, A5, B5, LTR, 4x6", 5x7"	A4, A5, B5, LTR, 4x6", 5x7"
Plain Paper	Plain Paper
Photo Paper Pro Platinum (PT-101)	Photo Paper Pro Platinum (PT-101)
Photo Paper Plus Glossy II (PP-201)	Photo Paper Plus Glossy II (PP-201)
Photo Paper Plus Semi-Gloss (SG-201)	Photo Paper Plus Semi-Gloss (SG-201)
Glossy Photo Paper "Everyday Use" (GP-501)	Glossy Photo Paper "Everyday Use" (GP-501)
Matte Photo Paper (MP-101)	Matte Photo Paper (MP-101)
3 positions (Fast, Standard, High)	3 positions (Fast, Standard, High)
9 positions, Auto intensity (AE copy)* *Not supported for ADF	9 positions, Auto intensity (AE copy)* *Not supported for ADF
approx. 21sec.	approx. 23sec.
approx. 4.7ipm	approx. 4.0ipm
approx. 4.3ipm	approx. 3.4ipm
max. 99 pages	max. 99 pages

SPECIFICATIONS

Model		PIXMA MX517
FAX		
Type		Desktop Transceiver (Super G3 / Color Communication)
Applicable Line		PSTN (Public Switched Telephone Network)
Transmission Speed ¹⁰	Black	approx. 3sec. (33.6kbps)
	Color	approx. 1min. (33.6kbps)
Fax Resolution	Black	8pels/mm x 3.85lines/mm (Standard) 8pels/mm x 7.7lines/mm (Fine) 300 x 300dpi (Extra Fine)
	Color	200 x 200dpi
Print Size		A4, LTR, LGL
Scanning Width		208mm (A4), 214mm (LTR)
Modem Speed		maximum 33.6kbps (Automatic fall back)
Compression	Black	MH, MR, MMR
	Color	JPEG
Gradation	Black	256 levels
	Color	24bit Full color (RGB each 8bit)
ECM (Error Correction Mode)		ITU-T T.30 compatible
Automatic Dialing	Coded Speed Dialing	max. 20 locations
	Group Dialing	max. 19 locations
Transmission / Reception Memory ¹¹		approx. 50 pages
PC FAX		
Type		Windows: via FAX modem (in MFP), Mac: NA
Destination Number		1 location
Black / Color		B/W transmission only
NETWORK		
Protocol		TCP / IP
Wired LAN	Network Type	IEEE802.3u (10BASE-TX) / IEEE802.3 (10BASE-T)
	Data Rate	100M/10Mbps (auto switchable)
Wireless LAN	Network Type	IEEE802.11n / IEEE802.11g / IEEE802.11b (infrastructure mode)
	Frequency Band	2.4GHz
	Data Rate ¹²	IEEE802.11n: 150Mbps IEEE802.11g: 54 Mbps IEEE802.11b: 11 Mbps
	Range	indoor 50m (depends on the transmission speed and conditions)
	Security	WEP64 / 128bit, WPA-PSK (TKIP / AES), WPA2-PSK (TKIP / AES)
SYSTEM REQUIREMENTS		
Windows	(Please visit www.canon-asia.com to check OS compatibility and to download the latest driver updates)	Windows XP SP2, XP SP3 / Windows Vista SP1, Vista SP2 / Windows 7, 7 SP1
Macintosh		Macintosh Mac OS X v10.5 and later
GENERAL SPECIFICATIONS		
Quick Start		approx. 4sec.
Operation Panel	Display	LCD (2.5 inch / 6.2 cm TFT color)
Auto Document Feeder (ADF)	Paper Handling (Plain Paper)	A4, LTR = 30, LGL = 5
Interface		Wireless LAN b/g/n, Ethernet 10/100, USB 2.0 Hi-Speed, PictBridge, Memory Card Slots, Bluetooth v2.0 (Optional: BU-30)
Operating Environment		Temperature: 5 - 35°C, Humidity: 10 - 90% RH (no dew condensation)
Storage Environment		Temperature: 0 - 40°C, Humidity: 5 - 95% RH (no dew condensation)
Acoustic Noise (PC Print)	Photo (4x6") ^{*13}	approx. 42.0dB (A)
Power		AC100 - 240V, 50 / 60Hz
Power Consumption	Standby	approx. 1.7W
	Copying ¹⁴	approx. 18W
Environment	Regulation	RoHS (EU, China), WEEE (EU)
	Eco-Label	Energy Star
Monthly Duty Cycle		up to 3,000 pages
Dimension (WxDxH)		approx. 458 x 385 x 200mm
Weight		approx. 8.8kg

Specifications are subject to change without notice.

^{*1} Ink droplets can be placed with a pitch of 1/4800 inch at minimum.

^{*2} Document print speeds are the averages of ESAT in Office Category Test for the default mode, ISO / IEC 24734, excluding time to print the first set. Photo print speed is based on the default setting using ISO / JIS-SCID N2 on Photo Paper Plus Glossy II and does not take into account data processing time on host computer. Print speed may vary depending on system configuration, interface, software, document complexity, print mode, page coverage, type of paper used etc.

^{*3} Paper types NOT supported for borderless printing are as follows: Envelope, High Resolution Paper, T-Shirt Transfer, Photo Stickers.

^{*4} The paper size that can be fed from the cassette are A4, A5, B5, LTR size.

^{*5} Optical resolution is a measure of maximum hardware sampling resolution, based on ISO 14473 standard.

^{*6} Increasing the scanning resolution will limit the maximum possible scanning area.

^{*7} The fastest speed in Hi-Speed USB on Windows PC. Transfer time to computer is not included.

PIXMA MX437	PIXMA MX377
Desktop Transceiver (Super G3 / Color Communication)	Desktop Transceiver (Super G3 / Color Communication)
PSTN (Public Switched Telephone Network)	PSTN (Public Switched Telephone Network)
approx. 3sec. (33.6kbps)	approx. 3sec. (33.6kbps)
approx. 1min. (33.6kbps)	approx. 1min. (33.6kbps)
8pels/mm x 3.85lines/mm (Standard)	8pels/mm x 3.85lines/mm (Standard)
8pels/mm x 7.7lines/mm (Fine)	8pels/mm x 7.7lines/mm (Fine)
300 x 300dpi (Extra Fine)	300 x 300dpi (Extra Fine)
200 x 200dpi	200 x 200dpi
A4, LTR, LGL	A4, LTR, LGL
208mm (A4), 214mm (LTR)	208mm (A4), 214mm (LTR)
maximum 33.6kbps (Automatic fall back)	maximum 33.6kbps (Automatic fall back)
MH, MR, MMR	MH, MR, MMR
JPEG	JPEG
256 levels	256 levels
24bit Full color (RGB each 8bit)	24bit Full color (RGB each 8bit)
ITU-T T.30 compatible	ITU-T T.30 compatible
NA	NA
max. 19 locations	max. 19 locations
approx. 50 pages	approx. 50 pages
Windows: via FAX modem (in MFP), Mac: NA	Windows: via FAX modem (in MFP), Mac: NA
1 location	1 location
B/W transmission only	B/W transmission only
TCP / IP	NA
NA	NA
NA	NA
IEEE802.11n / IEEE802.11g / IEEE802.11b (infrastructure mode)	NA
2.4GHz	NA
IEEE802.11n: 150Mbps	NA
IEEE802.11g: 54 Mbps	
IEEE802.11b: 11 Mbps	
indoor 50m (depends on the transmission speed and conditions)	NA
WEP64 / 128bit, WPA-PSK (TKIP / AES), WPA2-PSK (TKIP / AES)	NA
Windows XP SP2, XP SP3 / Windows Vista SP1, Vista SP2 / Windows 7, 7 SPI	Windows XP SP2, XP SP3 / Windows Vista SP1, Vista SP2 / Windows 7, 7 SPI
Macintosh Mac OS X v10.5 and later	Macintosh Mac OS X v10.5 and later
approx. 4sec.	approx. 4sec.
Full dot LCD	Full dot LCD
A4, LTR = 30, LGL = 5	A4, LTR = 30, LGL = 5
Wireless LAN b/g/n, USB 2.0 Hi-Speed, PictBridge, Bluetooth v2.0 (Optional: BU-30)	USB 2.0 Hi-Speed
Temperature: 5 - 35°C, Humidity: 10 - 90%RH (no dew condensation)	Temperature: 5 - 35°C, Humidity: 10 - 90%RH (no dew condensation)
Temperature: 0 - 40°C, Humidity: 5 - 95%RH (no dew condensation)	Temperature: 0 - 40°C, Humidity: 5 - 95%RH (no dew condensation)
approx. 42.5dB (A)	approx. 42.5dB (A)
AC100 - 240V, 50 / 60Hz	AC100 - 240V, 50 / 60Hz
approx. 1.7W	approx. 1.6W
approx. 18W	approx. 14W
RoHS (EU, China), WEEE (EU)	RoHS (EU, China), WEEE (EU)
Energy Star	Energy Star
up to 3,000 pages	up to 3,000 pages
approx. 458 x 385 x 200mm	approx. 458 x 385 x 200mm
approx. 8.5kg	approx. 8.4kg

*8 Color document scan speed is measured with ISO / IEC 24735 Annex C Test Chart A. Scan speed indicates the time measured between pressing the scan button of the scanner driver and the on-screen status display turns off. Scan speed may vary depending on system configuration, interface, software, scan mode settings and document size etc.

*9 Copy speeds are the average of sFCOT and sESAT, ISO / IEC 29183. ADF copy speed is the average of ESAT in General Performance Test for the default simplex mode, ISO / IEC 24735, excluding time to copy the first set. Copy speed may vary depending on document complexity, copy mode, page coverage, type of paper used etc., and does not take into account warm-up time.

*10 Black & white document fax transmission speed is based on default setting using ITU-T No.1 chart. Color document fax transmission speed is based on default setting using Canon Color Fax Test Sheet. Actual transmission speed may vary depending on document complexity, fax settings at receiving end, and line conditions etc.

*11 Page count is based on ITU-T No.1 chart or Canon FAX Standard Chart No.1.

*12 These values are a theoretical maximum transmission speed between the printer and an equivalent network device, and do not indicate the actual transmission speed obtained.

*13 When printing ISO / JIS-SCID N2 pattern on 4"x6" Photo Paper Plus Glossy II using default settings.

*14 Copy: When copying ISO / JIS-SCID N2 (printed by inkjet printer) on A4 size plain paper using default settings.



Delighting You Always

**SOUTH & SOUTHEAST ASIA REGIONAL
HEADQUARTERS:**

CANON SINGAPORE PTE. LTD.

1 HarbourFront Avenue #04-01 Keppel Bay Tower
Singapore 098632
Tel: 65-6799 8888 Fax: 65-6799 8882
www.canon-asia.com

CANON OFFICES

INDIA:

Canon India Pvt. Ltd.
Tel: 91-124-4160 000
Fax: 91-124-4160 011
www.canon.co.in

MALAYSIA:

Canon Marketing (Malaysia)
Sdn. Bhd.
Tel: 603-7844 6000
Fax: 603-7845 0505
www.canon.com.my

SINGAPORE:

Canon Singapore Pte. Ltd.
Tel: 65-6799 8888
Fax: 65-6798 8882
www.canon.com.sg

THAILAND:

Canon Marketing (Thailand) Co. Ltd.
Tel: 66-2-3449 999
Fax: 66-2-3449 922
www.canon.co.th

VIETNAM:

Canon Singapore Pte. Ltd.
Ho Chi Minh City Representative
Office & Showroom
Tel: 84-8-382 00466
Fax: 84-8-38200477
www.canon.com.vn

Hanoi Representative Office
Tel: 84-4-7711 677
Fax: 84-4-7711 678
www.canon.com.vn

CANON BUSINESS PARTNERS

BANGLADESH:

J.A.N. Associates
Tel: 880-2-8611 444
Fax: 880-2-8610 410

BRUNEI:

Interhouse Company
Tel: 673-2-653 001
Fax: 673-2-653 003

CAMBODIA:

i-Click (Cambodia) Pte. Ltd.
Tel: 855-23-996 638
Fax: 855-23-996 639

INDONESIA:

P. T. Datascip
Tel: 62-21-2664 8999
Fax: 62-21-6544 811-13
www.canon.co.id

MALDIVES:

SIMDI
Tel: 960-333 4421
Fax: 960-333 4424

MYANMAR:

Myanmar Golden Rock
International Co. Ltd.
Tel: 95-1-2020 92/3/4
Fax: 95-1-202 079

NEPAL:

International Electronics
Concern (P) Ltd.
Tel: 977-1-4421 991
Fax: 977-1-4421 909

PAKISTAN:

MBM International
Tel: 92-21-3227 77093-4
Fax: 92-21-3438 6308

SRI LANKA:

Metropolitan Computers
(Pvt.) Ltd.
Tel: 94-11-2437 797
Fax: 94-11-2448 980

Dealer's Stamp

Because its products are subject to continuous improvement,
CANON reserves the right to modify product design and
specifications without notice and without incurring any obligations.