



BE CONNECTED

BE IMAGINATIVE



BE CREATIVE

BECAUSE
YOU CAN

Photo All-in-One



MG4270



MG3170



MG2270



MP237



 **PIXMA**
Quality. Promised.



PIXMA MG4270

PHOTO PRINT SPEED (4R, BORDERLESS)

44sec.

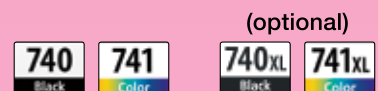
Color

CARTRIDGE SYSTEM



FINE Cartridge

CARTRIDGE TYPE



DOUBLE-SIDED PRINT



Auto Duplex Print

PAPER FEEDING SYSTEM



MAIN CONNECTIVITY



DIRECT PRINTING



WIRELESS MOBILE PRINTING

iPhone iEPP,
Android EPP



SCAN RESOLUTION

SCAN



1200×2400dpi

DIRECT SCANNING TO



Scan to Memory card

OTHER FEATURES



DISPLAY TYPE





PIXMA MG3170

PIXMA MG2270

PIXMA MP237



WINE RED



WHITE

44sec.



Color

44sec.



Color

40sec.



Color
(bordered)



FINE Cartridge



FINE Cartridge



FINE Cartridge

(optional)



(optional)



(optional)



Auto Duplex Print

—

—



—



—

—

—

iPhone iEPP,
Android EPP



—

—

SCAN



1200×2400dpi

SCAN



1200×2400dpi

SCAN



600×1200dpi

—

—

—



Full HD Movie Print



Fun Filter Effect



My Image Garden



Print Your Days



Full HD Movie Print



Fun Filter Effect



My Image Garden



Print Your Days



Full HD Movie Print



Fun Filter Effect



My Image Garden



Print Your Days



7-Segment LED



7-Segment LED

—



THE MAGIC OF PIXMA

ALL-IN-ONE PHOTO PRINTERS

A new range of PIXMA All-in-One Photo Printers designed specifically for home use presents a level of creativity and efficiency that can only be described as magical. The new software, My Image Garden, provides quick access to every creative function of the printer, while Print Your Days application makes it fun and easy to create and print unforgettable photo collages from FaceBook. These high-quality, high-speed printers offer a range of convenient connections – from Cloud Printing to Wi-Fi networking – and adhere to strict environmental standards. You'll enjoy doing so much more... when you bring home the magic of PIXMA.

PIXMA MG4270



PIXMA MG3170



PIXMA MG2270



PIXMA MP237



THE ONLY WAY TO KNOW THE TRUE SPEED OF AN INKJET PRINTER

Only with ISO Print/Copy Speed Measurement standards can you know the true speed of an inkjet printer. This is because ISO standards are universal, which means every printer manufacturer uses the exact same testing methods. Otherwise, there is no basis for comparison. In fact, when different testing methods are used, you can't tell which printer is faster: one that prints 10 images per minute (ipm) or one that prints 30 pages per minute (ppm). Canon adopted the universal ISO standards for inkjet printers so you always get the performance you expect right out of the box. Be sure you ask for the ISO standard before you buy – it's the only way to know the real speed of an inkjet printer.



MY IMAGE GARDEN

Where Your Creativity Grows



NEW



My Image Garden is a brilliantly simple innovation that brings back the joy of printing. This software is designed to help you find new and creative ways to organize, combine and print your photos – even images you may have forgotten. My Image Garden automatically unearths these lost treasures and combines them with new ones in thematic layouts that will dazzle you. Scanning, file management and PDF editing functions can also be performed. It's the ultimate creative tool for your new and old photos.

NEW USER INTERFACE

Finding Treasure

This highly functional interface ensures easy operation and makes viewing and searching for photos more fun than ever. It will constantly inspire you with imaginative ways to combine images. Quick Menu shows you how to expand your creativity, suggesting fantastic layouts and automatically displays old photos. It also gives you quick access to a variety of useful functions via the customizable Desktop Accessory.



IMAGE ASSORTING TECHNOLOGY

Instant Layouts

It recognizes faces and groups them into optimum layouts for calendars, montages and other creative printouts.



Auto Layout



Face Recognition

MY ART

Creative Templates

Choose from eight categories of creative templates and you can do amazing things with your photos: Photo Layout (including business cards and ID photos), Collage, Card, Calendar, Stickers, Disc Label, Video Layout and Paper Craft. You can even specify various settings and perform editing operations.

CALENDAR VIEW / PEOPLE VIEW / FOLDER VIEW

Easy Organization

Organize your photos so that they are always easy to recall and access. People View creates categories based on the faces you register; Calendar View organizes images by capturing date and displays thumbnails in a calendar format; with Folder View, you create your own categories, such as events or places.



Calendar View



Folder View



Collage



Card



Calendar

FULL HD MOVIE PRINT

Movie Stills / Merging Frames



Select still frames from your HD movies and improve image quality with a click. You can also do creative things like merging several images into a single, action-packed photo or make a truly spectacular layout.



* Requires installation of the following software available for the Canon camera on which the movie was captured.

- Canon ZoomBrowser EX (version 6.5 or later) or Canon ImageBrowser (version 6.5 or later): MOV format only
- Canon ImageBrowser EX (version 1.0 or later) software: MOV format and MP4 format

Merge Frames

FUN FILTER EFFECT

Artistic Twists



Add artistic effects to your photos – including Fish-Eye, Miniature, Toy Camera, Soft Focus and Blur Background – with a click.

FISH-EYE



MINIATURE



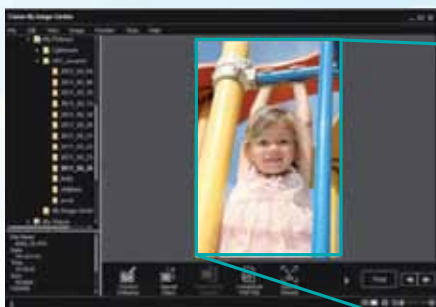
TOY CAMERA



IMAGE CORRECTION / MANIPULATION

Professional Finish

Enjoy one-click access to Auto Photo Fix for a professional photo finish: automatic Red-Eye Correction; Face Sharpener for improved sharpness; and Face Smoothing, which removes blemishes and gives skin a smooth, natural look.



Red-Eye Correction

PHOTO SHARING SITE

Easy Access

Access Flickr – a popular photo-sharing site and download images instantly. Just enter the appropriate keyword, select an image and click “save” to the desired location.

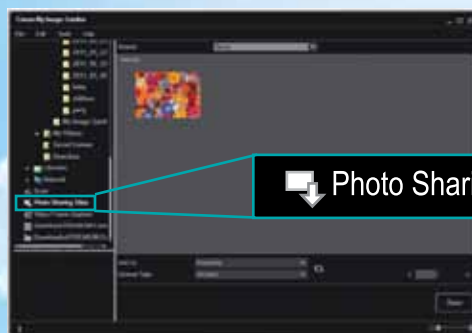
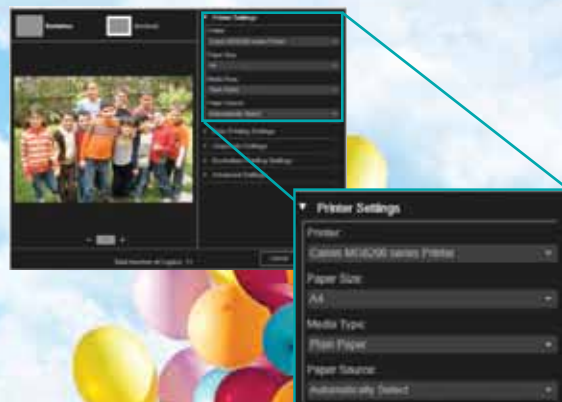


Photo Sharing Site

PRINT

Perfect Endings

Once you've finished creating and enhancing your images, you're ready to print. My Image Garden makes it easy to choose media size and type, bordered or borderless prints, print date (if desired), and number of prints. You can also make a grayscale photo or select a PDF file for printing.



PRINT YOUR DAYS



NEW

Now you can have a wonderful time printing your favorite photos or making thrilling photo collages from Facebook albums that you have access to. You can even add text and exciting photo effects before printing. Simply log in to your Facebook account and start the Print Your Days application*.

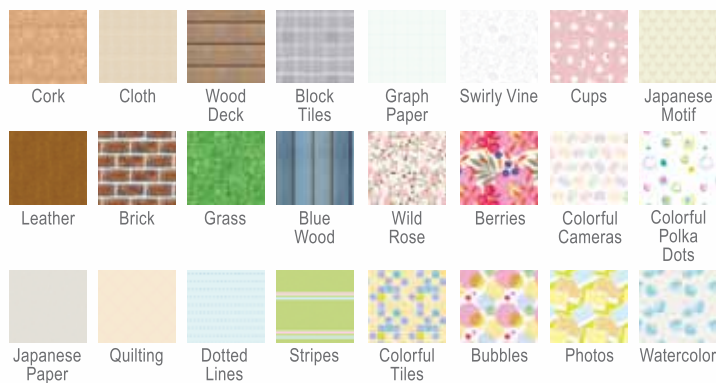


Find this app
on Facebook



PHOTO COLLAGE

Select "Photo Collage", choose the paper size and import photos from the selected album. There are 24 background themes to choose from; once you make your choice, your photos are automatically laid out in an attractive collage. You then have the option of confirming the layout or customizing it to suit your preference. When you're satisfied, press the print button.



Choose from 24 background themes for your photo collage.

INDIVIDUAL PHOTO

Select "Single Photos", choose the paper size and import a photo from the selected album. You then have the option of cropping the photo, adding photo effects or inserting text. When you're satisfied, press the print button.



Select Paper size



Text editing

PHOTO EFFECTS - Up to 17 photo effects to choose from



Brighten Entire Image



Darken Entire Image



Vivid Tone



Monochrome Tone



Sepia Tone

* Supported OS: Windows 7 / Vista
Requires installation of Silverlight 5 or later

FINE™ PRINT CARTRIDGE



High-Speed, High-Resolution Printing

The renowned FINE™ print cartridge ensures high-speed, high-resolution photos at up to 4800 dpi with ink droplets as small as 2 pl. You can print a brilliant 4x6" borderless* photo in as few as 44 seconds.

* Not applicable to PIXMA MP237; it only prints a bordered photo in approx. 40 seconds.



Original



New FINE™ Cartridge

DUAL COLOR GAMUT PROCESSING (DCGP)



Exceptionally Accurate Color Copies

Reproduction is so precise that even second-generation copies are virtually identical to the original. This is because DCGP evaluates brightness, contrast and other factors critical to the copying process, and then creates the ideal balance between color differences and gradation. Thus, color accuracy is always exceptional.



Original



Make a copy



Copy



Make a copy again



Second-Generation Copy

HYBRID INK SYSTEM

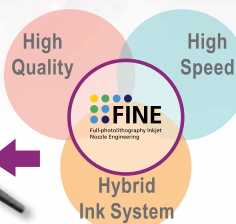


Vivid Colors & Sharp Text

PIXMA printers utilize a Hybrid Ink System, which incorporates both dye-based and pigment-based inks. Dye ink produces exceptionally vivid, natural colors, while pigment ink ensures sharp, easy-to-read black text – even when printed over an image.



B



A BETTER WAY TO SCAN

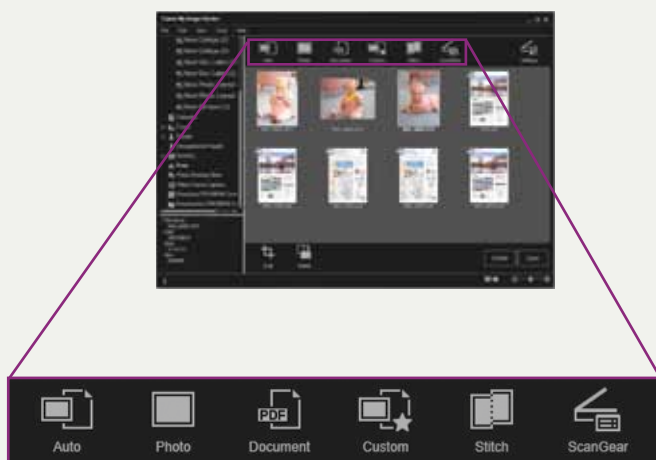


ACCESS VIA
MY IMAGE GARDEN

Scanning photos and documents is easier than ever, with all functions accessible via My Image Garden. Scan buttons are conveniently laid out, and you can choose from a comprehensive array of options that best suits your scanning requirements.

AUTO SCAN MODE

The type of document/image you are scanning is identified and the ideal scan settings are automatically selected. You can scan at the touch of a button.



Scan buttons

SCAN TO CLOUD

Enjoy the convenience of scanning photos and documents directly to cloud. Simply download and install a cloud service in your PC, such as Evernote, and your scans will be stored there.

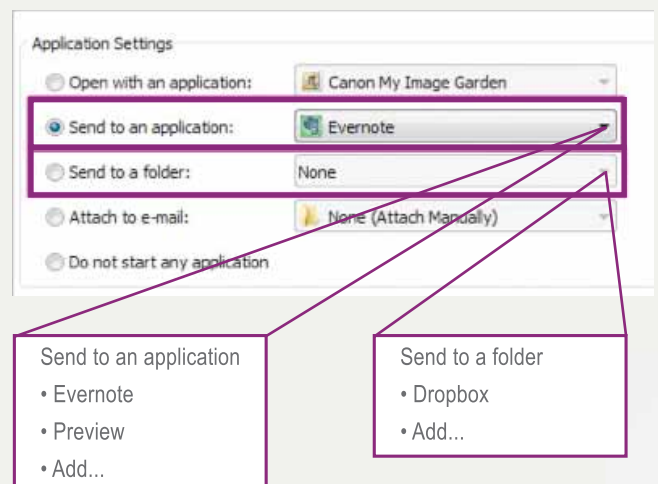


IMAGE CATEGORIES

Organizes scanned images into categories (works with Auto Scan Mode).



OCR TEXT DATA CONVERSION

Extract text from a scanned image to create a .TXT file. Then use the appropriate software to edit, copy, save or email.

SCAN TO MEMORY*



Save scanned data to USB flash memory devices or common memory cards. Use the Compact PDF option to compress a file to 1/10th the size of a normal PDF document.

* PIXMA MG4270 only.



Wi-Fi*



Setting up a secure wireless network is easy with Wi-Fi Protected Setup (WPS) and Windows Connect Now (WCN). Now you can share printing and scanning capabilities among computers and mobile devices from anywhere in your home.

* PIXMA MG4270 and MG3170.



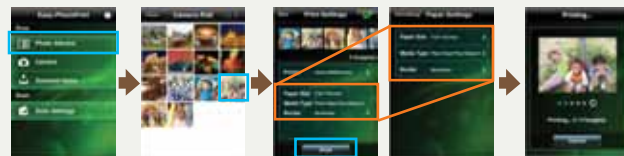
MOBILE PRINTING*



Print photos or PDF documents* wirelessly from your iOS or Android™ devices in a few simple steps. You can also “snap & print” a photo immediately after taking it.

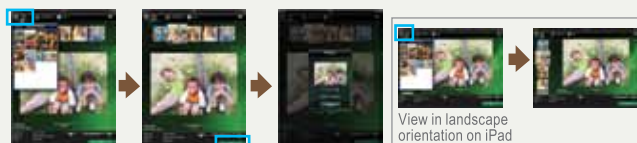
Printing existing photos from mobile devices.

Canon iEPP (For iOS) iPhone / iPod Touch



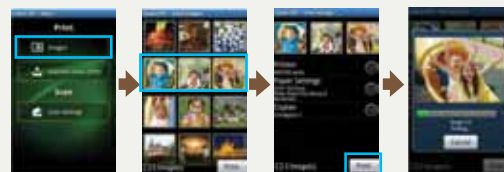
1. Select "Photo Albums" from the menu list.
2. Select image(s) to print.
3. Change or confirm settings and touch "Print".

Canon iEPP (For iOS) iPad



1. Select "Photo Albums" from menu bar and select image(s) to print.
2. Change or confirm print settings while viewing print preview and touch "Print".

Canon EPP (For Android)*



1. Select "Images" from the Menu.
2. Select image(s) to print.
3. Change or confirm print settings and touch "Print".

* Subject to Android device compatibility

* PIXMA MG4270 & MG3170.

Get your Canon mobile printing apps here



QR code for Android



QR code for iOS

AIRPRINT™ WIRELESS PRINTING*



AirPrint™ allows users to print photos, emails, web pages and documents wirelessly, without the need to install device drivers – making it a seamless experience.

* PIXMA MG4270 and MG3170.
Supported for iOS devices only.



PIXMA CLOUD LINK*



With PIXMA Cloud Link, you can directly access and print photos and ready-made stationery templates stored online. And to really expand what you can do without a computer, PIXMA Cloud Link also supports Google Cloud Print™.

*PIXMA MG4270 only.

GOOGLE CLOUD PRINT™



NEW

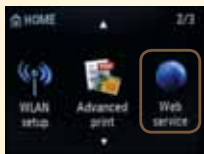
Google Cloud Print™ allows you to print from Gmail™ and Google Docs™ via a mobile device. You can also print from the Google Chrome™ browser for Mac®, Windows®, Linux® and Chrome™ devices. Use Google Cloud Print to print wherever you are with applications you use every day. What's more, you can share your home and work printers with anyone you choose.



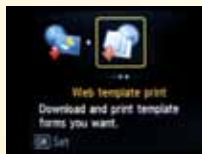
WEB TEMPLATE PRINT

Print attractive templates directly from your PIXMA printer. Templates include stationery, envelopes, memos and calendars and are regularly updated.

Select "Web service"



Select "Web template print"



Select category



Canon Server
Templates are
updated regularly



Select template to print



ONLINE ALBUM PHOTO PRINT

Print photos from Picasa™ Web Albums. Simply view and select images on the printer and print.



Select "Advanced print"



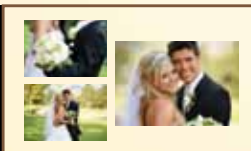
Select "Online Album print"



Select photo sharing site



* A Picasa account is required.



Select album and photos
to print



EASY OPERATION

FASTFRONT*



With the innovative FastFront design, you have direct access to the ink cartridges and paper tray from the front of the printer. This makes changing cartridges and loading paper incredibly quick and easy.

* PIXMA MG4270, MG3170 and MG2270.



AUTO DUPLEX PRINTING*



Auto Duplex Print

Save time and paper by printing on both sides of the paper. With the Auto Duplex Printing function, this is done automatically; there's no need to turn the paper over manually.

* PIXMA MG4270 and MG3170.

PRINT FROM USB FLASH DRIVE / MEMORY CARD*



Memory Card

Print photos and documents directly from a USB flash drive and most commonly used memory cards.

*PIXMA MG4270 only.

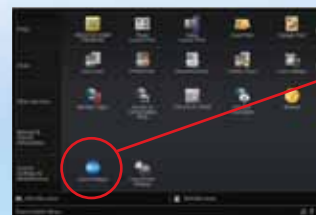
ECO FRIENDLY

THE GREEN MACHINE

PIXMA printers are designed to be energy efficient and to have minimal impact on the environment. To reduce CO₂ emissions, PIXMA conforms to the EU RoHS directive and the international Energy Star Program. Whenever possible, recycled plastics are used and packing materials are reduced.

QUIET MODE

Quiet Mode reduces noise to a bare minimum. You can pre-set specific hours of operation via Quick Menu and the printer will automatically switch to Quiet Mode at the specified time.



ECO MODE

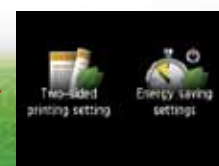
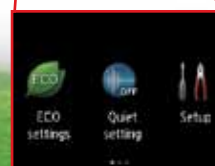
AUTO POWER OFF

Your PIXMA will automatically turn itself off after a specified interval of inactivity.

AUTO POWER ON* **NEW**

It's not necessary to leave the printer ON to make sure you don't miss a print job. Whenever your PIXMA receives a print job, even if the power is OFF, it will automatically power ON and print. This is particularly useful for Wi-Fi printing and cloud printing jobs from outside the home.

*PIXMA MG4270, MG2270 and MP237.





CLOUD CONNECTIONS

The PIXMA MG4270 offers an exciting array of features and functions that goes beyond expectations for a standard All-in-One Photo Printer. From the sheer convenience of PIXMA Cloud Link to the ease of wireless printing from your mobile device, the PIXMA MG4270 will bring new levels of fun and functionality to your home.

2^{Minimum}
pi

4800^{Maximum}
dpi

SCAN
1200×2400dpi

2.5"
LCD

Wi-Fi
CERTIFIED

PIXMA Cloud Link

Google
Cloud Print Ready

AirPrint

Mobile Printing



BE CONNECTED

PIXMA MG4270

ISO Standard Speed				Photo Print Speed
approx. 9.9 ipm Black	approx. 5.7 ipm Color	approx. 20 sec. Color	approx. 4.3 ipm Color	approx. 44 sec. Color
Print		Copy		10x15cm (4x6") borderless

Measured by ISO/IEC 24734, 29183 standards



My Image Garden



Print Your Days



Full HD Movie Print



Fun Filter Effect



Auto Duplex Print



FastFront



FINE



FINE Cartridge



ChromaLife100



USB



THREE COLORFUL CHOICES

Express your individuality with the PIXMA MG3170, now in 3 exciting colors – wine red, white and black. Plus you can now print remotely on demand anywhere in the world with features like intelligent Wi-Fi and AirPrint™. Color your world with a PIXMA MG3170 today.

2^{Minimum}
pi

4800^{Maximum}
dpi

SCAN

1200×2400^{dpi}

Wi-Fi
CERTIFIED




Mobile Printing


Print Your Days


My Image Garden

BE FUN

PIXMA MG3170

ISO Standard Speed				Photo Print Speed
approx. 9.2 ipm	approx. 5.0 ipm	approx. 20 sec.	approx. 4.3 ipm	approx. 44 sec.
Black	Color	Color	Color	Color
Print		Copy		10x15cm (4x6") borderless

Measured by ISO/IEC 24734, 29183 standards





BE SUCCESSFUL

ISO Standard Speed				Photo Print Speed
approx. 8.4 ipm	approx. 4.8 ipm	approx. 30 sec.	approx. 2.5 ipm	approx. 44 sec.
Black	Color	Color	Color	Color
Print		Copy		10x15cm (4x6") borderless

Measured by ISO/IEC 24734, 29183 standards

PIXMA MG2270

SUCCESS WITHOUT THE STRESS

It's like having your own personal assistant, one that prints lab-quality photos, makes perfect copies, and scans images and documents with ease. The Hybrid Ink System ensures that black text is sharp and clear even when printed over a color image, while FastFront makes changing ink cartridges and loading paper a breeze. With the PIXMA MG2270, you'll achieve success without the stress.

2^{Minimum} pl

4800^{Maximum} dpi

SCAN
1200x2400dpi

My Image Garden

Print Your Days

Full HD Movie Print

Fun Filter Effect

FastFront

FINE Cartridge

ChromaLife100

USB



BE PERSONAL

ISO Standard Speed				Photo Print Speed
approx. 7.0 ipm	approx. 4.8 ipm	approx. 30 sec.	approx. 1.8 ipm	approx. 40 sec.
Black	Color	Color	Color	Color
Print		Copy		10x15cm (4x6") bordered

Measured by ISO/IEC 24734, 29183 standards

PIXMA MP237

SO AFFORDABLE, SO AMAZING!

It might be the most affordable PIXMA, but you can count on it to print lab-quality photos that can last up to 300 years*. The PIXMA MP237 also makes beautiful copies and scans images and documents with ease. And just like the high-end models, it features My Image Garden and Print Your Days, Canon's most advanced creative software. The PIXMA MP237 – now you can afford to be brilliant!

*Under proper storage conditions.

• **2**pl
Minimum

4800
Maximum
dpi

SCAN

600x1200 dpi


My Image Garden


Print Your Days


Full HD Movie Print


Fun Filter Effect


FINE Cartridge


ChromaLife 100+


USB

CREATIVE PARK PREMIUM

FREE DOWNLOADS!



IT'S PARADISE FOR PIXMA USERS

CREATIVE PARK PREMIUM

EXCLUSIVE ACCESS!

ACCESS VIA
MY IMAGE GARDEN



© Brown & Bigelow, Inc./D.P.A. Licensed by Cosmo Merchandising
© F.W. & Co.

™ & © Eric Carle, LLC.

© P & Co Ltd 2012

© F.W. & Co.
© LC 2012

© LC 2012

These printers and Canon Original Inks give you exclusive access to Canon's CREATIVE PARK PREMIUM website. And it's yours **FREE!** This professional-quality content is available when all Canon Original Inks are properly installed. So bring out the best in yourself and your printer – visit Canon Creative Park Premium!

* Not available for PIXMA MP237.

Creative Park Premium* gives you exclusive access to the photos and illustrations of world-renowned artists. Use these free downloads to create magnificent prints, posters, calendars, greeting cards and so much more. You can also download templates and make intricate 3D paper sculptures. All you need is a PIXMA printer complete with Canon Original Inks.

CREATIVE PARK

MAKING PAPER MAGIC

CREATIVE PARK

www.canon.com/c-park



Creative Park lets you turn ordinary paper into magical creations! Have endless fun making personalized gifts, cards, calendars and more. Or create amazing origami and 3D paper sculptures simply by downloading the templates. With Canon Original Inks and photo paper, you can work magic!

PIXMAtown

CREATIVITY IS A WAY OF LIFE

PIXMA
town

www.canon-asia.com/pixmatown



Imagine a place where you're inspired by everything you see! That's life in PIXMAtown because you can't help being creative! Download templates and have fun with all sorts of crafts projects – from home decor to stationery. Be inspired by the hippest contemporary artists. In PIXMAtown, you're truly part of a creative community!

THE PERFECT FINISH

Get the most out of your PIXMA printer – pair it with Canon's extensive range of paper media from super high gloss photo paper to photo stickers.

Canon's FINE™ cartridges also offer great performance and hassle-free maintenance.

PAPER MEDIA & CARTRIDGES

Photo Printing



PT-101
Photo Paper
Pro Platinum
(Super High
Gloss)
• 300g/m²
• 4x6", A4



PP-201
Photo Paper
Plus Glossy II
• 275g/m²
• 4x6", A4



LU-101
Photo Paper
Pro Luster
• 260g/m²
• A4

NEW



GP-501
Glossy Photo
Paper
• 170g/m²
• 4x6", A4



SG-201
Photo Paper Plus
Semi-Gloss
• 260g/m²
• 4x6", 8x10", A4

Special Projects



MP-101
Matte Photo
Paper
• 170g/m²
• 4x6", A4



TR-301
T-Shirt
Transfers
• 143g/m²
• A4
(10 sheets/pack)



PS-101
Photo Stickers
• 190g/m²
• Stickers
(5 sheets/pack)
(16 photo
stickers/sheet)

Business Printing



HR-101N
High Resolution
Paper
• 106g/m²
• A4

Ink Cartridges

PG-740
Pigment Black



CL-741
Dye Color



Optional

PG-740XL
Pigment Black



CL-741XL
Dye Color



PG-810
Pigment Black



CL-811
Dye Color



Optional

PG-810XL
Pigment Black



CL-811XL
Dye Color



For PIXMA MG4270, MG3170, MG2270

For PIXMA MP237

CHROMALIFE100 – A CENTURY OF BRILLIANT PHOTOS

ChromaLife100 greatly increases the longevity of your photos through an innovative combination of Canon Genuine Inks and Photo Papers. Not only will prints last up to 100 years under proper storage conditions, the image quality is also greatly enhanced.

*CHROMALIFE100 PROPER STORAGE CONDITIONS

100-year life in an album:

<Criteria for estimation> The permanence presented above is estimated using an accelerated dark storage test and designed for silver-halide photos (ISO/FD18909). Samples are printed with an optical density of 1.0 (each black, cyan, magenta, yellow) and kept in a controlled environment of high temperature and 50% relative humidity. The test environment is designed to accelerate color fading. The rate of the decrease in the optical density and the rate of yellow discoloration of the paper are measured. Finally, the results are extrapolated to the length of time when a printed image is kept in an environment of 23°C 50% RH.

30-year lightfastness:

<Criteria for estimation> When displayed in a glass frame in a typical indoor space (estimating 500 lux / 10 hours per day) without direct sunlight. Estimated lightfastness is made under the following test conditions. Light source: White fluorescent light 70,000 lux; Temperature: 24°C; Humidity: 60% RH; A 2mm thick glass is placed on the sample with an air gap between the glass and the sample during accelerated testing.

10-year gas fastness:

<Criteria for estimation> Estimated gas fastness is made under the following test conditions: Temperature (24°C) and humidity (60% RH) are controlled in an environment of mixed gases of O₃, NO_x and SO_x. The ratio of the gases is typical to indoor air composition (O₃: NO_x: SO_x = 3:19:1) with 100 times concentration in order to accelerate fading.

<Criteria for estimation of print longevity>

Estimates for image permanence are made using the Wilhelm Imaging Research, Inc. Endpoint criteria: Accumulated illuminance causes a monochromatic / reflective optical density loss of 20-35% (figures set respectively for each color, starting density of 1.0). Accumulated illuminance causes a difference in color balance of yellow, magenta and cyan (each component in composite black) of 12-18%.

<Tips>

Making your printed images last longer: Light, environmental gases, high temperature and humidity can accelerate color fading. When displaying your photographs, avoid high intensity lighting and use glass-filtered frames. Photos stored in the dark, using archival quality albums or storage materials, will tend to last longer than photos that are exposed to light. Avoid high temperatures and high humidity to promote the image permanence of your photos.

Note: The image permanence estimates presented above may vary depending on display/ storage conditions. The expressed numbers of years estimates are the result of stimulated, accelerated tests conducted by Canon Inc. and do not represent a product guarantee.

* CHROMALIFE 100* applies only to the PIXMA MP237.

**Gas Fastness Approx.
10 Years**



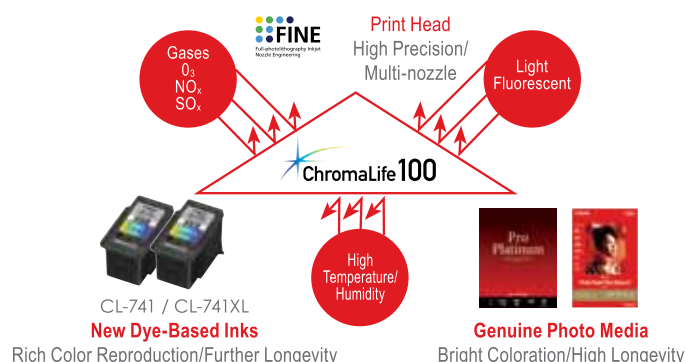
Original print



10 years later

No noticeable color change

*Under proper storage conditions. See specifications for details.



SPECIFICATIONS

PRINT			MG4270
Maximum Printing Resolution			4800 (horizontal)*1 x 1200 (vertical) dpi
Print Head / Ink	Type		FINE™ Cartridge
	Total Number of Nozzles		1,792 nozzles
	Ink Droplet Size (Min)		2pl
	Ink Tank		PG-740, CL-741 (PG-740XL, CL-741XL Optional)
Print Speed	Document: Color*2	ESAT / Simplex	approx. 5.7ipm
	Document: B/W*2	ESAT / Simplex	approx. 9.9ipm
	Photo (4x6")*2	PP-201 / Borderless	approx. 44sec.
Printable Width			Up to 203.2mm (8 inches), Borderless: Up to 216mm (8.5 inches)
Printable Area	Borderless Printing*3		Top / Bottom / Right / Left margin: each 0mm (Supported Paper Size: A4 / LTR / 4x6" / 5x7" / 8x10")
	Bordered Printing		Top margin: 3mm, Bottom margin: 5mm, Left / Right margin: each 3.4mm (LTR, LGL: Left: 6.4mm, Right: 6.3mm)
	Bordered Auto Duplex Printing		Top margin: 5mm, Bottom margin: 5mm, Left / Right margin: each 3.4mm (LTR, LGL: Left: 6.4mm, Right: 6.3mm)
Recommended Printing Area			Top margin: 32.5mm / Bottom margin: 33.5mm
Paper Size			A4, A5, B5, LTR, LGL, 4x6", 5x7", 8x10", Envelopes (DL, COM10)
Paper Handling Front Tray: MG4270, MG3170 and MG2270 Rear Tray: MP237 (Maximum Number)	Plain Paper		A4, A5, B5, LTR = 100, LGL = 10
	High Resolution Paper (HR-101N)		A4 = 80
	Photo Paper Pro Platinum (PT-101)		4x6" = 20, A4 = 10
	Photo Paper Plus Glossy II (PP-201)		4x6" = 20, A4 = 10
	Photo Paper Pro Luster (LU-101)		A4 = 10
	Photo Paper Plus Semi-Gloss (SG-201)		4x6" = 20, A4 / 8x10" = 10
	Glossy Photo Paper "Everyday Use" (GP-501)		4x6" = 20, A4 = 10
	Matte Photo Paper (MP-101)		4x6" = 20, A4 = 10
	Photo Stickers (PS-101)		1
	T-Shirt Transfer (TR-301)		1
	Envelope		European DL, US Com. #10 = 5
Support Media for Auto Duplex Printing	Type		Plain Paper
Paper Weight	Size		A4, LTR
	Front Tray		Plain Paper: 64-105 g/m², Canon specialty paper: max paper weight: approx. 300g/m² (Photo Paper Pro Platinum PT-101)
Ink End Sensor			Dot count
Print Head Alignment			Manual
SCAN			
Scanner Type			Flatbed
Scanning Method			CIS (Contact Image Sensor)
Optical Resolution*4			1200 x 2400dpi
Selectable Resolution*5			25 - 19200dpi
Scanning Bit Depth (Input / Output)	Grayscale		16 / 8bit
	Color		48 / 24bit (RGB each 16 / 8bit)
Line Scanning Speed*6	Grayscale		1.2 ms/lines (300dpi)
	Color		3.5 ms/lines (300dpi)
Scanning Speed*7	Reflective	A4 Color / 300dpi	approx. 14 sec.
Maximum Document Size	Flatbed		A4, LTR (216 x 297mm)
COPY			
Maximum Document Size			A4, LTR (216 x 297mm)
Compatible Media	Size		A4, A5, B5, LTR, 4x6", 5x7"
	Type		Plain Paper Photo Paper Pro Platinum (PT-101) Photo Paper Plus Glossy II (PP-201) Photo Paper Pro Luster (LU-101) Photo Paper Plus Semi-Gloss (SG-201) Glossy Photo Paper "Everyday Use" (GP-501) Matte Photo Paper (MP-101)
Image Quality			3 positions (Fast, Standard, High)
Density Adjustment			9 positions, Auto intensity (AE copy)* *Not supported for ADF
Copy Speed*8	Document: Color	sFCOT / Simplex	approx. 20sec.
		sESAT / Simplex	approx. 4.3ipm
Multiple Copy	Black / Color MG4270, MG3170 & MG2270: Number of copies is set via printer's user interface (UI). MP237: Number of copies is set by pressing the start key.		Max. 99 pages
NETWORK			
Protocol			TCP / IP
Wireless LAN	Network Type		IEEE802.11n / IEEE802.11g / IEEE802.11b (Infrastructure mode)
	Frequency Band		2.4GHz
	Data Rate (standard value)*9		IEEE802.11n: Max. 150Mbps
			IEEE802.11g: Max. 54Mbps
			IEEE802.11b: Max. 11Mbps
	Range		indoor 50m (depends on the transmission speed and conditions)
Security		WEP 64 / 128bit, WPA-PSK (TKIP / AES), WPA2-PSK (TKIP / AES)	
SYSTEM REQUIREMENTS			
Windows	(Please visit www.canon-asia.com to check OS compatibility and to download the latest driver updates)		Windows XP SP2, XP SP3 / Windows Vista SP1, Vista SP2 / Windows 7, 7 SP1
Macintosh			Mac OS X v10.4.11 – 10.7
GENERAL SPECIFICATIONS			
Quick Start			approx. 6sec.
Operation Panel	Display		LCD (2.5inch / 6.2cm TFT color)
Interface			Wireless LAN b/g/n, USB 2.0 Hi-Speed, Memory Card Slots
Operating Environment			Temperature: 5 - 35°C; Humidity: 10 - 90% RH (no dew condensation)
Storage Environment			Temperature: 0 - 40°C; Humidity: 5 - 95% RH (no dew condensation)
Acoustic Noise (PC Print)	Photo (4x6")*10		approx. 43.0dB(A)
Power			AC100 - 240V, 50/60Hz
Power Consumption	Standby		approx. 0.7W
	Copying*11		approx. 19W
Environment	Regulation		RoHS (EU, China), WEEE (EU)
	Eco-Label		Energy Star
Dimensions (WxDxH)			approx. 449 x 304 x 152mm
Weight			approx. 5.7kg

Specifications are subject to change without notice.

*1 Ink droplets can be placed with a pitch of 1/4800 inch at minimum.

*2 Document print speeds are the averages of ESAT in Office Category Test for the default simplex mode, ISO / IEC 24734.
Photo print speed is based on the default setting using ISO / JIS-SCID N2 on Photo Paper Plus Glossy II and does not take into account data processing time on host computer.
Print speed may vary depending on system configuration, interface, software, document complexity, print mode, page coverage, type of paper used, etc.

*3 Paper types NOT supported for borderless printing are as follows: Envelope, High Resolution Paper, T-Shirt Transfer, Photo Stickers.

*4 Optical resolution is a measure of maximum hardware sampling resolution, based on ISO 14473 standard.

*5 Increasing the scanning resolution will limit the maximum possible scanning area.

MG3170	MG2270	MP237
4800 (horizontal)*1 x 1200 (vertical) dpi	4800 (horizontal)*1 x 1200 (vertical) dpi	4800 (horizontal)*1 x 1200 (vertical) dpi
FINE™ Cartridge	FINE™ Cartridge	FINE™ Cartridge
1,792 nozzles	1,792 nozzles	1,472 nozzles
2pl	2pl	2pl
PG-740, CL-741 (PG-740XL, CL-741XL Optional)	PG-740, CL-741 (PG-740XL, CL-741XL Optional)	PG-810, CL-811 (PG-810XL, CL-811XL Optional)
approx. 5.0ipm	approx. 4.8ipm	approx. 4.8ipm
approx. 9.2ipm	approx. 8.4ipm	approx. 7.0ipm
approx. 44sec.	approx. 44sec.	approx. 40sec. (bordered)
Up to 203.2mm (8 inches), Borderless: Up to 216mm (8.5 inches)	Up to 203.2mm (8 inches), Borderless: Up to 216mm (8.5 inches)	Up to 203.2mm (8 inches)
Top / Bottom / Right / Left margin: each 0mm (Supported Paper Size: A4 / LTR / 4x6" / 5x7" / 8x10")	Top / Bottom / Right / Left margin: each 0mm (Supported Paper Size: A4 / LTR / 4x6" / 5x7" / 8x10")	NA
Top margin: 3mm, Bottom margin: 5mm, Left / Right margin: each 3.4mm (LTR, LGL: Left: 6.4mm, Right: 6.3mm)	Top margin: 3mm, Bottom margin: 5mm, Left / Right margin: each 3.4mm (LTR, LGL: Left: 6.4mm, Right: 6.3mm)	Top margin: 3mm, Bottom margin: 5mm, Left / Right margin: each 3.4mm (LTR, LGL: Left: 6.4mm, Right: 6.3mm)
Top margin: 5mm, Bottom margin: 5mm, Left / Right margin: each 3.4mm (LTR, LGL: Left: 6.4mm, Right: 6.3mm)	NA	NA
Top margin: 32.5mm / Bottom margin: 33.5mm	Top margin: 32.5mm / Bottom margin: 33.5mm	Top margin: 31.2mm / Bottom margin: 32.5mm
A4, A5, B5, LTR, LGL, 4x6", 5x7", 8x10", Envelopes (DL, COM10)	A4, A5, B5, LTR, LGL, 4x6", 5x7", 8x10", Envelopes (DL, COM10)	A4, A5, B5, LTR, LGL, 4x6", 5x7", 8x10", Envelopes (DL, COM10)
A4, A5, B5, LTR = 100, LGL = 10	A4, A5, B5, LTR = 100, LGL = 10	A4, A5, B5, LTR = 100, LGL = 10
A4 = 80	A4 = 80	A4 = 80
4x6" = 20, A4 = 10	4x6" = 20, A4 = 10	4x6" = 20, A4 = 10
4x6" = 20, A4 = 10	4x6" = 20, A4 = 10	4x6" = 20, A4 = 10
A4 = 10	A4 = 10	A4 = 10
4x6" = 20, A4 / 8x10" = 10	4x6" = 20, A4 / 8x10" = 10	4x6" = 20, A4 / 8x10" = 10
4x6" = 20, A4 = 10	4x6" = 20, A4 = 10	4x6" = 20, A4 = 10
4x6" = 20, A4 = 10	4x6" = 20, A4 = 10	4x6" = 20, A4 = 10
1	1	1
1	1	1
European DL, US Com. #10 = 5	European DL, US Com. #10 = 5	European DL, US Com. #10 = 10
Plain Paper	NA	NA
A4, LTR	NA	NA
Plain Paper: 64-105 g/m², Canon specialty paper: max paper weight: approx. 300g/m² (Photo Paper Pro Platinum PT-101)	Plain Paper: 64-105 g/m², Canon specialty paper: max paper weight: approx. 300g/m² (Photo Paper Pro Platinum PT-101)	Plain Paper: 64-105 g/m², Canon specialty paper: max paper weight: approx. 300g/m² (Photo Paper Pro Platinum PT-101)
Dot count	Dot count	Dot count
Manual	Manual	Manual
Flatbed	Flatbed	Flatbed
CIS (Contact Image Sensor)	CIS (Contact Image Sensor)	CIS (Contact Image Sensor)
1200 x 2400dpi	1200 x 2400dpi	600 x 1200dpi
25 - 19200dpi	25 - 19200dpi	25 - 19200dpi
16 / 8bit	16 / 8bit	16 / 8bit
48 / 24bit (RGB each 16 / 8bit)	48 / 24bit (RGB each 16 / 8bit)	48 / 24bit (RGB each 16 / 8bit)
1.2 ms/lines (300dpi)	1.2 ms/lines (300dpi)	1.1 ms/lines (300dpi)
3.5 ms/lines (300dpi)	3.5 ms/lines (300dpi)	3.4 ms/lines (300dpi)
approx. 14sec.	approx. 14sec.	approx. 14sec.
A4, LTR (216 x 297mm)	A4, LTR (216 x 297mm)	A4, LTR (216 x 297mm)
A4, LTR (216 x 297mm)	A4, LTR (216 x 297mm)	A4, LTR (216 x 297mm)
A4, LTR, 4x6"	A4, LTR, 4x6"	A4, LTR, 4x6"
Plain Paper	Plain Paper	Plain Paper
Photo Paper Pro Platinum (PT-101)	Photo Paper Plus Glossy II (PP-201)	NA
Photo Paper Plus Glossy II (PP-201)	Photo Paper Pro Luster (LU-101)	NA
Photo Paper Pro Luster (LU-101)	Photo Paper Plus Semi-Gloss (SG-201)	NA
Photo Paper Plus Semi-Gloss (SG-201)	Glossy Photo Paper "Everyday Use" (GP-501)	NA
Glossy Photo Paper "Everyday Use" (GP-501)	NA	NA
Matte Photo Paper (MP-101)	NA	NA
Plain Paper: Fast, Standard / Other paper: Fix	Plain Paper: Fast, Standard / Other paper: Fix	Plain Paper: Fast, Standard / Other paper: Fix
NA	NA	NA
approx. 20sec.	approx. 30sec.	approx.30sec.
approx. 4.3ipm	approx. 2.5ipm	approx. 1.8ipm
1-9 pages, 20 pages	1-9 pages, 20 pages	20 pages
TCP / IP	NA	NA
IEEE802.11n / IEEE802.11g / IEEE802.11b (infrastructure mode)	NA	NA
2.4GHz	NA	NA
IEEE802.11n: Max. 150Mbps	NA	NA
IEEE802.11g: Max. 54Mbps	NA	NA
IEEE802.11b: Max. 11Mbps	NA	NA
indoor 50m (depends on the transmission speed and conditions)	NA	NA
WEP 64 / 128bit, WPA-PSK (TKIP / AES), WPA2-PSK (TKIP / AES)	NA	NA
Windows XP SP2, XP SP3 / Windows Vista SP1, Vista SP2 / Windows 7, 7 SP1	Windows XP SP2, XP SP3 / Windows Vista SP1, Vista SP2 / Windows 7, 7 SP1	Windows XP SP2, XP SP3 / Windows Vista SP1, Vista SP2 / Windows 7, 7 SP1
Mac OS X v10.4.11 – 10.7	Mac OS X v10.4.11 – 10.7	Mac OS X v10.4.11 – 10.7
approx. 1sec.	approx. 1sec.	NA
7 segment LED	7 segment LED	NA
Wireless LAN b/g/n, USB 2.0 Hi-Speed	USB 2.0 Hi-Speed	USB 2.0 Hi-Speed
Temperature: 5 - 35°C; Humidity: 10 - 90% RH (no dew condensation)	Temperature: 5 - 35°C; Humidity: 10 - 90% RH (no dew condensation)	Temperature: 5 - 35°C; Humidity: 10 - 90% RH (no dew condensation)
Temperature: 0 - 40°C; Humidity: 5 - 95% RH (no dew condensation)	Temperature: 0 - 40°C; Humidity: 5 - 95% RH (no dew condensation)	Temperature: 0 - 40°C; Humidity: 5 - 95% RH (no dew condensation)
approx. 40.5dB(A)	approx. 43.5dB(A)	approx. 44.7dB(A)
AC100 - 240V, 50/60Hz	AC100 - 240V, 50/60Hz	AC100 - 240V, 50/60Hz
approx. 2.8W	approx. 0.6W	approx. 0.6W
approx. 20W	approx. 11W	approx. 10W
RoHS (EU, China), WEEE (EU)	RoHS (EU, China), WEEE (EU)	RoHS (EU, China), WEEE (EU)
Energy Star	Energy Star	Energy Star
approx. 449 x 304 x 152mm	approx. 449 x 304 x 152mm	approx. 444 x 329 x 153mm
approx. 5.5kg	approx. 5.3kg	approx. 5.3kg

*6 The fastest speed in Hi-Speed USB on Windows PC. Transfer time to computer is not included.

*7 Color document scan speed is measured with ISO / IEC 24735 Annex C Test Chart A.
Scan speed indicates the time measured between pressing the scan button of the scanner driver and the on-screen status display turning off.
Scan speed may vary depending on system configuration, interface, software, scan mode settings, document size, etc.

*8 Copy speeds are the average of sFCOT and sESAT, ISO / IEC 29183.
Copy speed may vary depending on document complexity, copy mode, page coverage, type of paper used, etc., and does not take into account warm-up time.

*9 These values are a theoretical maximum transmission speed between the printer and an equivalent network device, and do not indicate the actual transmission speed obtained.

*10 When printing ISO / JIS-SCID N2 pattern on 4x6" Photo Paper Plus Glossy II using default settings.

*11 When copying ISO / JIS-SCID N2 (printed by inkjet printer) on A4 size plain paper using default settings.



Delighting You Always

**SOUTH & SOUTHEAST ASIA REGIONAL HEADQUARTERS:
CANON SINGAPORE PTE. LTD.**

1 HarbourFront Avenue #04-01 Keppel Bay Tower
Singapore 098632
Tel: 65-6799 8888 Fax: 65-6799 8882
www.canon-asia.com

CANON OFFICES

INDIA:
Canon India Pvt. Ltd.
Tel: 91-124-4160 000
Fax: 91-124-4160 011
www.canon.co.in

MALAYSIA:
Canon Marketing (Malaysia)
Sdn. Bhd.
Tel: 603-7844 6000
Fax: 603-7845 0505
www.canon.com.my

SINGAPORE:
Canon Singapore Pte. Ltd.
Tel: 65-6799 8888
Fax: 65-6798 8882
www.canon.com.sg

THAILAND:
Canon Marketing (Thailand)
Co. Ltd.
Tel: 66-2-3449 999
Fax: 66-2-3449 922
www.canon.co.th

VIETNAM:
Canon Marketing Vietnam
Co. Ltd.
Ho Chi Minh City
Office & Showroom
Tel: 84-8-382 00466
Fax: 84-8-382 00477
www.canon.com.vn

Hanoi Branch Office
Tel: 84-4-7711 677
Fax: 84-4-7711 678
www.canon.com.vn

CANON BUSINESS PARTNERS

BANGLADESH:
J.A.N. Associates
Tel: 880-2-8611 444
Fax: 880-2-8610 410

BRUNEI:
Interhouse Company
Tel: 673-2-653 001
Fax: 673-2-653 003

CAMBODIA:
i-Click (Cambodia) Pte. Ltd.
Tel: 855-23-996 638
Fax: 855-23-996 639

INDONESIA:
P. T. Datascrip
Tel: 62-21-2664 8999
Fax: 62-21-6544 811-13
www.canon.co.id

MALDIVES:
SIMDI
Tel: 960-333 4421
Fax: 960-333 4424

MYANMAR:
Myanmar Golden Rock
International Co. Ltd.
Tel: 95-1-2020 92/3/4
Fax: 95-1-202 079

NEPAL:
International Electronics Concern
(P) Ltd.
Tel: 977-1-4421 991
Fax: 977-1-4421 909

PAKISTAN:
MBM International
Tel: 92-21-3227 77093-4
Fax: 92-21-3438 6308

SRI LANKA:
Metropolitan Computers (Pvt.) Ltd.
Tel: 94-11-2437 797
Fax: 94-11-2448 980

Dealer's Stamp