

**Canon**

**imageRUNNER**  
2016/2020





The new imageRUNNER 2016/2020 in a compact size boasts a range of product enhancements to help increase productivity, reduce the cost of document production and distribution for small offices and workgroup environments.

## Powerful Productivity Tools for Small Offices and Corporate Workgroups

Multifunctional Digital Capabilities and Network Connectivity for Today's Office Workflow



The new **imageRUNNER 2016/2020** series are designed to optimize office productivity by providing a benchmark performance, exceptional value and an extensive range of accessories that will enable users to select the most appropriate solution for their needs. With 16 and 20 page per-minute output speeds respectively, Canon's offers a new range of multi-function devices that encompasses advanced imaging and print features that Canon is renowned for. No matter which model you select, the flexible, modular design allows a seamless configuration to suit your needs.

# COPY



## Digital Multifunction

Cutting Edge Image Processing Technology

### Scan-Once-Print-Many

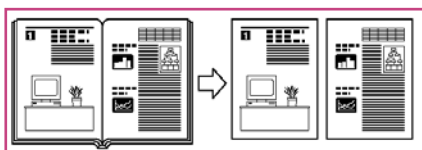
Fully leverages the inherent digital features of the device by making copies from images stored in memory, resulting in reduced scanner wear and tear.

### Concurrency

Elevates overall multifunction capabilities by synchronizing scanner, image processor and engine operation. As an example, users can store up to five copy jobs in memory while the machine is printing. Hence improves productivity by allowing you to return to work immediately, and eliminating lines at the copier.

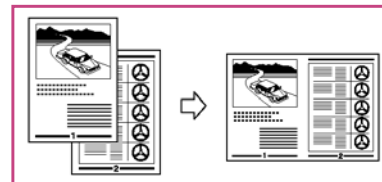
### Two-Page Separation

Enables you to copy facing pages of a book or bound document onto two separate sheets of copy paper.



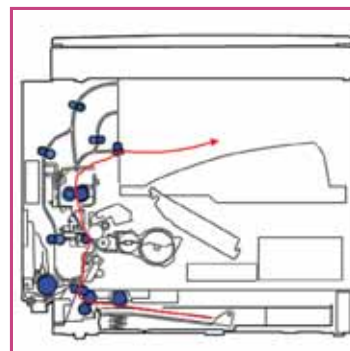
### Image Combination


Enables you to save paper, filing space and fax transmission expenses by combining up to 4 separate originals onto a single sheet of copy paper.



### Vertical Paper Path

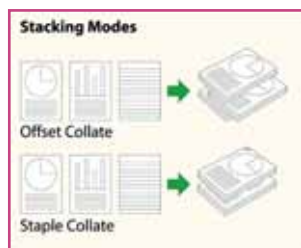
The new imageRUNNER 2016/2020 employs a vertical paper path. This shorter, straighter paper path minimizes the potential for paper feeding jams and contributes to the compact footprint of the main unit. By consolidating the paper feed path on the left side of the main unit enables all maintenance operations such as removing paper jam with ease from the left side. Printing efficiency is also enhanced with the shorter paper path.





### Smart Design and Space Saving Internal Finisher

The new imageRUNNER 2016/2020 offers finishing features that are amongst the most advanced of any product in its class. The new image RUNNER 2016/2020 also comes with an optional internally integrated finisher that provides up to 50-sheet stapling while preserving the original footprint of the system. Offering basic stapling and collating features, now these environments can also create professional-looking finished documents.



### Optional Automatic Duplexing

The new imageRUNNER 2016/2020 series feature optional trayless duplexing with an all-new integrated duplexing unit that provides two-sided printing. Hence this enables you to save paper costs.



### Maximum Input Capacity

An array of paper cassettes can be installed on the new imageRUNNER 2016 and 2020 for your requirement.

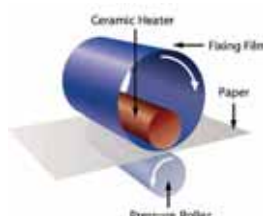
The new imageRUNNER 2016 comes standard with a 250 sheets paper cassette. An additional of up to 750 sheets of paper capacity (three 250-sheet cassettes) can be added, boosting the total paper capacity of up to 1,080 sheets.

The new imageRUNNER 2020 comes standard with 500 sheets (two 250-sheet cassettes) paper capacity. An additional of 500 sheets of paper capacity (two 250-sheet cassettes) can be added, boosting the total online paper capacity of up to 1,080 sheets.



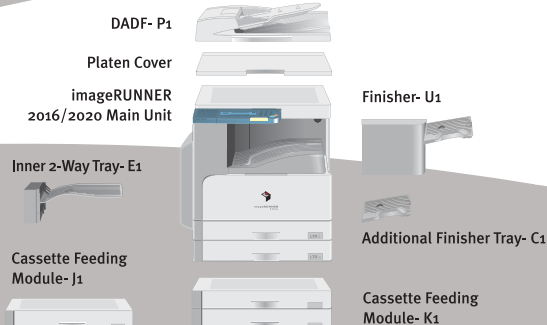
### Rapid Fusing System

Canon's RAPID Fusing System™ utilizes a durable film medium and a highly efficient ceramic heater, which serves to "fix" toner onto paper through heat transfer. This technology helps speed warm-up times while keeping energy consumption costs to a minimum.









## imageRUNNER 2016/2020 Specifications

### Main Unit

Type:	Digital Multifunctional Imaging System
Developing System:	Laser Dry Electrostatic Transfer System
Image Server Memory:	Standard 128MB RAM Maximum 256MB RAM
First-Copy Time:	7.9 seconds (A4)
Warm-Up Time:	13 seconds or Less
Copy Speed:	<b>iR2016</b> 16 ppm (A4) <b>iR2020</b> 20 ppm (A4)
Print Resolution:	600 x 600 dpi, 1200 x 1200 dpi (UFR II LT driver only)* 1200 (Equivalent) dpi x 600 dpi
Halftone:	256 Gradations of Gray
Duplexing:	Optional Automatic Duplexing
Magnification:	50 to 200% (in 1% increment)
Paper Sources	
Standard:	<b>iR2016</b> Front-loading Cassette 250 sheets x 1 Bypass 80 sheets
Maximum:	Paper Cassettes 250 sheets x up to 3
Standard:	<b>iR2020</b> Front-loading Cassette 250 Sheets x 2 Bypass 80 sheets
Optional:	Paper Cassettes 250 sheets x 2
Multiple Copies:	1 to 99 sheets

Network Interface Connections:	10 Base-T/100 Base-TX (RJ-45)/ USB 2.0
Dimensions (H x W x D):	
<b>iR2016</b>	580.4 x 622 x 633.4mm
<b>iR2020</b>	665.4 x 622 x 633.4mm
Weight:	<b>iR2016</b> 39.6 KG <b>iR2020</b> 46 KG
Power Requirements:	230V/6A/50Hz
Power Consumption:	1.60kW or less
Toner Yield:	Approx 8,300 sheets equivalent (A4 6%)
Drum Yield:	55,000 sheets (A4)

### Standard Accessories

#### UFR II LT Print Kit (Standard)

Processor:	Canon Custom Processor 192MHz
PDL Support:	UFR II LT
Data Processing:	600dpi (128MB RAM)/ 1200 dpi (256MB RAM)
Network OS:	Windows® 98/Me/2000/XP/ server 2003 (32 bit) Mac. OS X v10.15 – v10.3.8

### Optional Accessories

#### Duplexing Automatic Document Feeder- P1

Acceptable Originals:	A5 to A3
Capacity:	50 sheets (A4/ 80g/m <sup>2</sup> )
Max. Paper Weights:	52 to 105 g/m <sup>2</sup> (A4)

#### Inner 2 Way Tray- E1

Stacking Method:	Face Down
Paper Sizes:	B5R to A3
Paper Weights:	64 to 128g/m <sup>2</sup>
No. of Trays:	2 Trays

#### Finisher- U1

Number of Trays:	1 Stack Tray and 1 Optional Tray (with Additional Finisher Tray-C1)
Stacking Capacity:	One Tray: 770 sheets Two Trays: 200 sheets (each tray) (with Additional Finisher Tray-C1)
Staple Position:	Corner
Max. Stapling Capacity:	50 Sheets
Paper Weights:	64 to 128g/m <sup>2</sup>

#### Cassette Feeding Module- J1 (iR2016 only)

Paper Capacity:	1 x 250-sheet Paper Cassette
Acceptable Paper Sizes:	B5R to A3

#### Cassette Feeding Module- K1 (iR2016/2020)

Paper Capacity:	2 x 250-sheet Paper Cassettes
Acceptable Paper Sizes:	B5R to A3

#### Super G3 Fax Board- T1

Applicable Line:	Public Switched Telephone Network (PSTN)
Connection Lines:	One (J1)
Transmission Time:	ECM-MMR Approx. 3 seconds per page (33,600 bps)
Compression System:	MMR, MR, MH, JBIG
Sending Sizes:	B5 to A3

\* iR 256MB Expansion RAM- D1 is required

### Additional Optional Accessories and Utilities

#### Platen Cover Type- J

#### Additional Finisher Tray- C1

#### Duplex Unit- A1

#### Card Reader Kit- D1

#### Card Reader- E1

#### Document Tray- J1

#### Serial Interface- A1

#### PCL Printer Kit- J1

#### iR 256 MB Expansion RAM- D1



#### Regional Office

Canon Singapore Pte Ltd.  
1 HarbourFront Avenue  
#04-01 Keppel Bay Tower  
Singapore 098632  
Tel: 65-6799 8888  
Fax: 65-6799 8888

#### Distributors & Representatives Offices -

**Bangladesh:** **Flora Limited**  
Adamjee Corporate Head Quarters  
(4th Floor) 119-120  
Motijheel Commercial Area  
Dhaka 1000 Bangladesh  
Tel: 880-2-716-2742-46 / 225  
Fax: 880-2-955 0030

**Brunei:** **INTERHOUSE COMPANY**  
No. 5 -7 Bunut Jaya Complex  
Sp8 574 Jalan Tutong BF1320  
P.O Box 423, Seri Complex  
Bandar Seri Begawan  
BA 1779  
Brunei Darussalam  
Tel: 673-2 653001  
Fax: 673-2-653003

**Cambodia:** **Royal Cambodia Co., Ltd.**  
#427 Preab Monivong Blvd  
Phnom Penh  
Kingdom of Cambodia  
Tel: 855-23-428955  
Fax: 855-23-722961

#### Hong Kong:

Canon Hongkong Co. Ltd  
19/F, The Metropolis Tower  
10 Metropolis Drive  
Hung Hom, Kowloon, Hong Kong  
Tel: 852-2170 2828  
Fax: 852-2723 9684

#### India:

Canon India PVT. Ltd.  
2nd Floor, Tower A&B  
Cyber Greens, DLF Phase III  
Gurgaon – 122002  
Haryana, India  
Tel: 91-124-516 0000  
Fax: 91-124-516 0011

#### Indonesia:

**PT Samafitro**  
Jalan Ir. H Juanda No.8  
Jakarta 10120, Indonesia  
Tel: 62-21-345 5521  
Fax: 62-21-384 4271

#### Malaysia:

Canon Marketing (Malaysia) Sdn Bhd  
Block D, Peremba Square  
Saujana Resort Section U2,  
40150 Shah Alam  
Selangor Darul Ehsan, Malaysia  
Tel: 60-3-7844 6000 / 7845 0055  
Fax: 60-3-78446196 / 6198

#### Maldives:

**SIMDI Company Pte. Ltd**  
No.3 Koli Umar Maniku Goalhi  
Male' 20-02  
Republic of Maldives  
Tel: 960-324 819  
Fax: 960-310 549

#### Myanmar:

Accel International Co. Ltd.  
FJV Commercial Centre  
Level 6, No 422 - 426  
Strand Road Botataung Township  
Yangon, Myanmar  
Tel: 951-202092 to 96  
Fax: 95-1-202079

#### Nepal:

International Electronics Concern (P) Ltd  
Kha 14 1st Floor  
Haratibhawan Putalisadak  
Ramshah Path Kathmandu Nepal  
P.O Box 12588  
Tel: 977-1-4421 991  
Fax: 977-1-4421 909

#### Pakistan:

Shirazi Trading Company (Pvt.) Ltd  
2nd Floor Nadir House II Chundrigar Road  
Karachi 74000 Pakistan  
Tel: 92-21-242 4075  
Fax: 92-21-241 4998

#### Philippines:

Canon Marketing (Philippines) Inc.  
Marvin Plaza Building  
2153 Don Chino Rocas Avenue  
Makati City Metro Manila Philippines  
Tel: 632-812 6047  
Fax: 632-812 0067

#### Sri Lanka:

Metropolitan Office (Pvt.) Ltd.  
12, Magazine Road Colombo 08 Sri Lanka  
Tel: 94-11-2437797  
Fax: 94-11-2448980

#### Thailand:

Canon Marketing (Thailand) Co. Ltd  
10th Floor Bangkok City Tower  
179/34-45 South Sathorn Road  
Bangkok 10120  
Tel: 66-2-344 9999  
Fax: 66-2-344 9960

#### Vietnam:

Canon Singapore Pte Ltd  
Ho Chi Minh City Representative Office  
11 Me Linh Square, Ho Huan Nghiep St.  
Ground Floor, Dist 1, HCM City, Vietnam  
Tel: 848-8277311  
Fax: 848-8277283  
  
Hanoi City Representative Office  
Unit 601 and 602, 6th Floor, Viet Au Building  
205 Giang Vo, Hanoi  
Tel: 844-5121033  
Fax: 844-5121022