

EOS
DIGITAL

Canon
Delighting You Always



WITH UPDATED FIRMWARE
Version 2.0.0

**Behind Every Winning Shot
Lies an Unbreakable Spirit.**

EOS
7D

Take The Images That Define You

For some, photography is not just about getting the perfect shot. It's not about hitting the right exposure levels or subject composition, or even the end result. To these few, success is only defined by the pristine preservation of life's most celebrated moments. Moments that come and go in the blink of an eye. Their dedication comes with a price, but in the end, they are the ones who will be remembered.

When you're prepared to rise above the rest and become a true connoisseur of photography, the Canon EOS 7D will be there to meet you. With an 18-megapixel resolution, 8 fps continuous shooting, Full HD movie recording, and dust & water resistant seals, this is one camera that stands by you through thick and thin. With the latest Version 2.0.0 firmware update for improved performance and new functions added, step up your game and shoot with confidence.

18.0 MEGA
PIXELS
CMOS

DiGiC
4

8.0
Frames
Per Sec

All
Cross-type
-point
19 AF

EOS Movie
FULL HD

ISO
6400

100%
Viewfinder

EOS 7D



CUTTING-EDGE DUAL DIGIC 4 PROCESSORS

The EOS 7D's Dual DIGIC 4 processors give the camera superior imaging speed and performance that has to be seen to be believed. It not only fires off a blazing 8 frames per second at maximum resolution; all of these shots use 14-bit processing to achieve outstanding clarity and sharpness. Every adventure is captured vividly!

**DIGIC
4**

FLEXIBLE RAW FILE SELECTION

The EOS 7D offers you 3 RAW types to shoot with depending on your needs. The M-Raw and S-Raw types retain the versatility of the format but at more manageable file sizes. A one-touch RAW+JPEG button lets you easily capture a RAW and JPEG image for just that one shot when such a need arises. The new Version 2.0.0 firmware update now enables the following in-camera RAW processing settings before saving as a JPEG image; White Balance, Picture Style, Auto Lighting Optimizer, High ISO Speed Noise Reduction, JPEG image-recording quality, Color Space, Lens Peripheral Illumination Correction, Distortion Correction, and Color Aberration Correction.



Capture life's greatest hits

BRILLIANT 18-MEGAPIXEL CMOS SENSOR

At 18 megapixels, every click of the EOS 7D captures a world full of stunning high-resolution imagery, right down to the tiniest

detail. The advanced APS-C size CMOS sensor delivers lifelike images that give subjects a heightened level of depth and realism. While low noise levels even at high ISO speeds ensure a level of photo clarity that's unrivaled in its class.

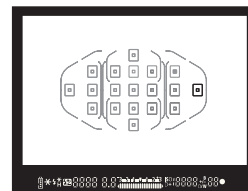
18.0 MEGA
PIXELS
CMOS



AF AREA SELECTION MODES

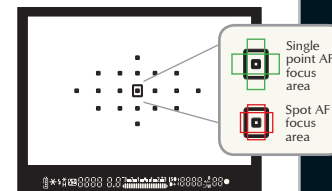
A feature inherited from the EOS-1 series, the EOS 7D's powerful AF system provides you with 5 different AF Area Selection Modes to get the perfect focus for your shot. These include:

Single point AF



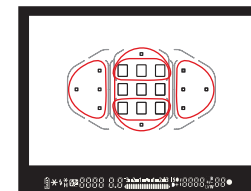
Manually select any one of the 19 points for AF

Spot AF*



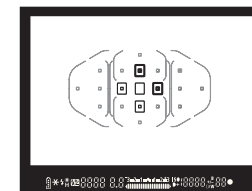
Similar to Single Point AF but with a smaller effective area focus

Zone AF

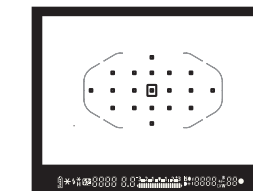


Choose from 5 AF zones for precise focus on off-center subjects

AF point expansion*



AF point automatic selection



AF point is automatically selected by the camera

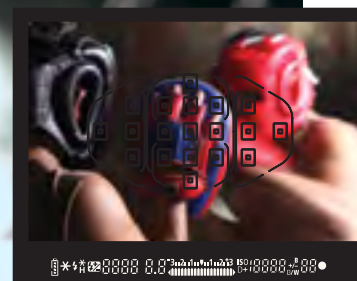
*Must be activated via Custom Function menu

SUPERB PRECISION 19-POINT AF SYSTEM

For superior focusing accuracy on any scene or subject, the EOS 7D utilizes a high-precision autofocus system with 19 cross-type f/5.6-sensitive sensors that are ideal for tracking moving subjects. Additionally, the center AF point becomes horizontally and vertically sensitive when shooting with f/2.8 or faster lenses* for even greater AF precision.

All Cross-type
19-point AF

*Number of available AF points and cross-type points vary depending on the lens



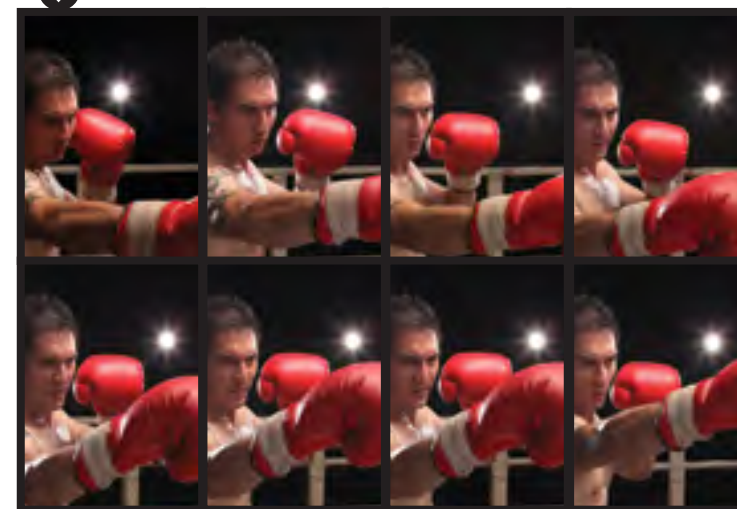
Make every shot count

8 FRAMES PER SECOND CONTINUOUS SHOOTING

Even the intensity of human vigor is no match for the EOS 7D. Thanks to the rapid processing speed of the Dual DIGIC 4 processors, the camera can capture an amazing 8 frames per second in high-speed continuous shooting mode. The latest firmware update now lets you fire off a maximum burst of up to 130* shots in JPEG/Fine, 25* shots in RAW, or 17* shots in RAW+JPEG.

8.0
Frames
Per Sec

*based on ISO 100 when shooting with 128 GB UDMA 7 CF card



INTELLIGENT AF TRACKING



When in AI Servo AF mode, the EOS 7D can predict subject movement and obtain continuous focus on it. You can also select the starting AF point used for focusing when the AF point selection is set to automatic.

RAPID SHOOTING RESPONSE

With an ultra-fast maximum shutter speed of 1/8000 sec. and a start-up time of just 0.1 sec., the EOS 7D's excellent response gives you the power to capture every action no matter how fleeting.

Take on the special moments in Full HD Video



STEREO AUDIO RECORDING

By connecting an external stereo microphone* to the EOS 7D, you can capture movies with high-quality stereo audio. A wind-cut feature helps to reduce excessive noise made by wind blowing. The Version 2.0.0 firmware update adds a manual adjustment function for sound recording from 1 to 64 levels.

*Sold separately

FULL HD 1920 x 1080 MOVIE RECORDING

For those moments that can't be told by still images, you'll be glad to know the EOS 7D also captures videos up to a Full HD 1920 x 1080 resolution with a 30p/25p/24p. When paired with the vast array of compatible EF lenses, you can shoot an intriguing variety of highly detailed footage and create your very own video masterpiece.



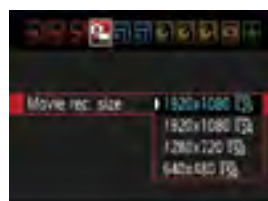
Full HD 1920 x 1080 resolution

MOVIE RECORDING OPTIONS

More than just a side feature of the camera, a wide selection of options are available to you in movie recording mode, including:

- MOVIE RECORDING SIZE • VIDEO FRAME RATE
- PICTURE STYLE • AUTOFOCUS MODES • METERING MODES

You can also shoot movies in manual (M) mode, which gives you full control over every aspect of exposure. This means you can choose from different metering modes, shutter speeds and aperture settings to get the movie effect you desire.



Movie recording resolution & frame rate

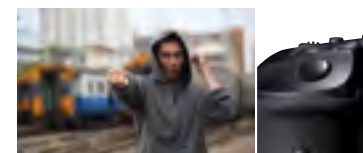
BUILT-IN MOVIE EDITING



DESIRED SCENE!

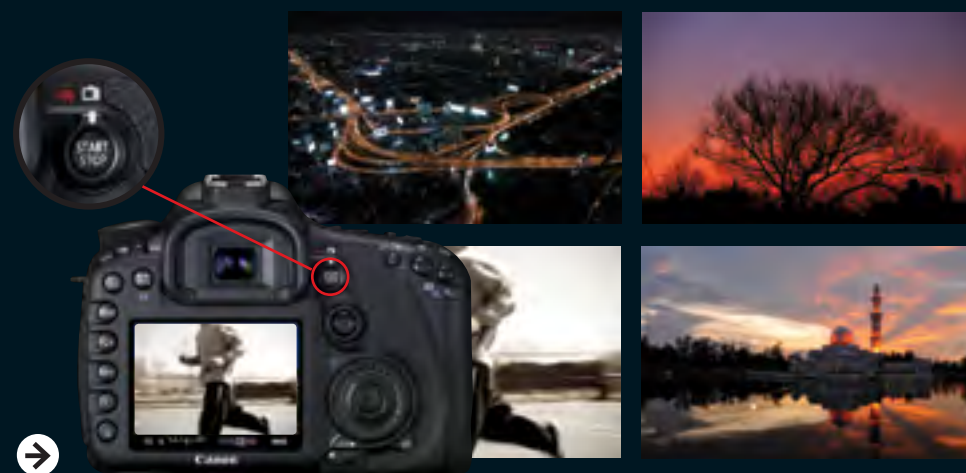
In-camera editing of movie clips is also possible with the EOS 7D. The beginning and the end of each clip can be cut so only the moments you want remain. This reduces the time needed for post-production, and also saves space on the memory card.

SIMULTANEOUS STILL CAPTURE



Still image capture during movie recording is also possible simply by pressing the shutter release button.

Face off challenges in different modes



LIVE VIEW MODE

The EOS 7D's Live View Mode includes all of the innovative features seen in the latest EOS digital SLRs such as exposure simulation, real-time image magnification, silent shooting mode, and Face Detection Live Mode AF. For greater convenience, Live View Mode can be activated with just a flick of the dedicated Live View shooting switch.

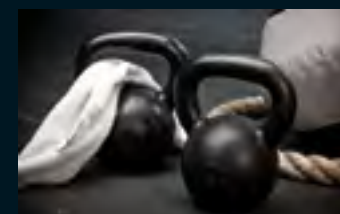
**LiveView
MODE**


VERSATILE ISO SPEED SETTINGS

A wide selection of ISO speed settings ranging from 100 to 6400 (expandable to 12800) lets you capture sharp images with minimal noise in any light. With the EOS 7D's updated Version 2.0.0 firmware, a new function is available to manually set ISO Auto's maximum limit between ISO 400-6400 in P, Tv, Av, M, and B modes. Four levels of noise reduction is possible at High ISO speeds for those who expect nothing less than crystal clear results.

**ISO
6400**

ADVANCED METERING SYSTEM




 Evaluative Metering




 Partial Metering



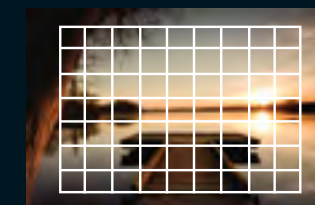
 Spot Metering



 Center-Weighted Averaging Metering

From stunning sunsets to picturesque flora and fauna, the EOS 7D's newly developed 63-zone Dual-layer metering sensor gives you perfect exposure in any situation. An improved algorithm now analyzes AF information to achieve better and more consistent image exposure. When that is done, choose from one of 4 metering modes to get your ideal exposure.

**63
ZONE**
Dual-Layer
Metering



63-zone Dual-layer metering sensor

For more shooting versatility, the EOS 7D offers exposure compensation of up to ± 5 stops, enabling you to adapt easily to changing light levels.



EOS
7D

“Champions aren’t made in the gyms.
Champions are made from something
they have deep inside them -
a desire, a dream, a vision”

- Muhammad Ali



PICTURE STYLE

Picture Style lets you enhance your images and videos with effects that match your subject or photographic expression. Choose from 6 pre-loaded options or download more from the Canon website. You can also create your own Picture Style files using the bundled Picture Style Editor software.



Off



On

HIGHLIGHT TONE PRIORITY

Highlight Tone Priority prevents images shot in bright light from being overexposed. It does this by expanding the gradation range within highlight regions, so that fine details in these areas are preserved and subjects look more lifelike.



Dark Edges



Corrected

LENS PERIPHERAL ILLUMINATION CORRECTION

Lens Peripheral Illumination Correction removes any “vignetting” that may occur when shooting with certain lenses. To enable it, the correction data of the lens used must first be registered into the camera. Once registered, correction will automatically be carried out every time a picture is taken with the lens.



Give your images that extra punch

AUTO LIGHTING OPTIMIZER

By automatically adjusting brightness and contrast levels, the Auto Lighting Optimizer ensures images have a balanced exposure in both the foreground and background — useful when shooting in backlit or high-key environments.



Auto
Lighting
Optimizer



Standard
For crisp, vivid and sharply focused images



Landscape
For images with enhanced sharpness, and natural yet vivid blues and greens



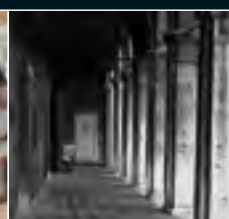
Portrait
Warm and lifelike skin tones with a softer focus



Neutral
Natural color reproduction for more subdued images, ideal for post-processing



Faithful
High accuracy color reproduction faithful to the original



Monochrome
For black & white or sepia images

A View that gives you the edge

100%
VIEW COVERAGE
AND APPROX. 1.0x
MAGNIFICATION!



SMART VIEWFINDER WITH 100% COVERAGE

With a 100% view coverage and approx. 1.0x magnification, the EOS 7D's viewfinder lets you see the world as your eyes do. This is especially useful for high-precision users as the resulting photo is exactly the same as the image in the viewfinder.



INTELLIGENT VIEWFINDER DISPLAY

By utilizing a transparent LCD layer, the viewfinder allows you to selectively view different types of screen displays for greater shooting precision. They include:



1 AF POINT DISPLAY

Display changes according to chosen AF Area Selection Mode



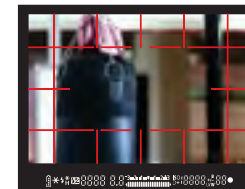
2 SPOT METERING CIRCLE

Indicates the area used for spot metering



3 GRID DISPLAY

For more accurate image composition



CLEAR VIEW II LCD MONITOR

The large 3-inch Clear View II LCD monitor lets you shoot or review your images with amazing ease. Featuring 920,000 dots, a 160° viewing angle, and an anti-glare construction, images are displayed with excellent contrast for easy viewing.



An ambient light sensor also adjusts LCD brightness automatically for maximum visibility, while an anti-scratch reinforced glass protective cover keeps the screen free from any marks.

DUAL AXIS ELECTRONIC LEVEL

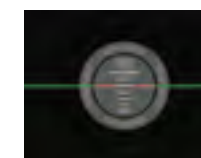
A first for EOS digital SLRs, the EOS 7D has a built-in dual axis electronic level that helps you achieve precise image alignment. It can be displayed on the LCD monitor or the viewfinder, and can also be superimposed on the screen during Live View or movie preview.



Roll on the right, no pitch



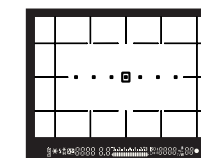
No roll or pitch, level even



No roll, pitch forward

When displayed on the LCD monitor, camera tilt can be detected horizontally up to 360° (roll) and vertically up to ±10° (pitch) in 1° increments.

The electronic level display in the viewfinder can indicate roll up to ±6° and pitch up to ±4° in 1° increments. For vertical shooting, it can indicate roll up to ±4° and pitch up to ±6°.



0° roll and pitch display

EOS INTEGRATED CLEANING SYSTEM

Headlined by the Self Cleaning Sensor Unit, this component uses tiny ultrasonic vibrations to remove any dust particles adhering to the low-pass filter. A fluorine coating on the filter provides further resistance to dust.

Stubborn dust that does not fall off easily is handled by the Dust Delete Function of the bundled software. This function is effective against dust that cannot be remove by the Self Cleaning Sensor Unit.



01



02



03



04

DURABLE & LASTING PERFORMANCE

The EOS 7D's shutter has been tested to have a 150,000-cycle reliability*, while a full battery charge lets you fire off approximately 1000 shots without flash.

*The shutter unit has passed a release test of 150,000 actuations. (The test was conducted internally and based on standard shooting conditions).

IMPROVED OPERATION EASE

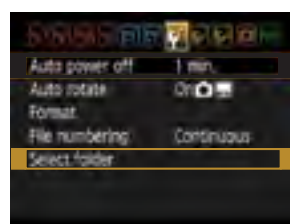
New camera controls have been added to make it easier to operate the EOS 7D and its numerous functions.

These include the Quick Control button, One-touch RAW+JPEG button, Multi-function button, and Live View shooting/Movie shooting button.



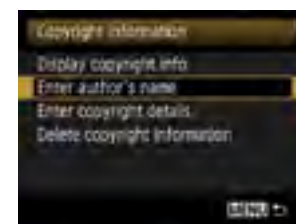
QUICK CONTROL SCREEN

With a press on its dedicated button and the Quick Control Screen lets you preview image setting in one screen to ensure proper setup before you take the shot. With the latest Version 2.0.0 firmware update, it is now possible to perform 7 types of settings during image playback; Protect images, Rotate, Rating, Resize, Highlight alert, AF point display, and Image jump with Main Dial.



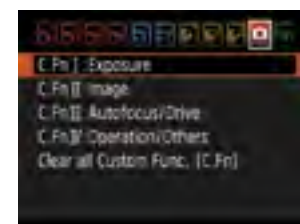
FOLDER CREATION & SELECTION

For better image management, you can create your own folders for storing your captured images. The firmware update for the EOS 7D adds a function for manually setting the file name with two user setting options. With User Setting 1, the first four characters can be replaced, while User Setting 2 allows replacing of the first three characters with the fourth character indicating the recording quality.



COPYRIGHT INFO ENTRY

Using the EOS Utility software, you can register copyright information in the camera, which will be recorded in the EXIF data of each captured image.



CUSTOM FUNCTIONS

Custom Functions offer you many ways to modify the EOS EOS 7D's performance so the camera works the way you want it to.

BUILT-IN WIDE ANGLE FLASH

The EOS 7D's built-in flash offers instant illumination when the need arises. It provides an ultra-wide flash coverage of up to 15mm, ideal for use with wide-angle lenses. The flash also acts as an integrated Speedlite transmitter that can be used to control multiple Speedlite flashes wirelessly.



IMPROVED WITH VERSION 2.0.0

Besides the new features mentioned previously, the latest Version 2.0.0 firmware update brings the following changes to the EOS 7D:

- Image rating function that rates images with one to five stars, allowing you to browse images and set slide show to display images according to ratings
- JPEG resize function to adjust captured images to a better suited size as necessary and to save the newly resized images as separate JPEGs
- Scrolling speed is now improved even with a magnified view during image playback, making it easier to check on focus after shooting
- Time zone and daylight-saving time settings are now available to accurately record local time of destination in images

Designed to your specifications

*See table behind for list of Custom Functions



NEW EOS ACCESSORIES

RAISE YOUR GAME WITH EOS ACCESSORIES & EF LENSES

GPS RECEIVER GP-E2



01

- Compatible with the EOS 7D after updating firmware to Version 2.0.0 via a cable connection
- Tags images with information on location's longitude, latitude and elevation*
- Records accurate time of shooting with a time zone setting function

*GPS information can only be tagged to still images. Digital compass and time sync functions are unavailable.

BG-E7 BATTERY GRIP



02

- Holds additional battery packs or AA batteries
- Vertical grip and shutter release button
- Anti-dust and water-resistant

WFT-E5 WIRELESS FILE TRANSMITTER



03

- Send images directly to a computer via a wireless (802.11a/b/g) or Ethernet connection.
- Allows connection with USB devices, including GPS devices and self-powered storage devices.

The following also possible:

- Shooting from a computer with Remote Live View
- Simultaneous shooting with up to 10 cameras linked wirelessly
- Wireless Bluetooth printing with the BU-30 Bluetooth



EF LENSES

EF 100mm f/2.8L MACRO IS USM



01

- Mid-telephoto macro lens with the world's first Hybrid Image Stabilization
- Uses top-quality L-lens optics
- Highly resistant to water and dust

EF-S 18-135mm f/3.5-5.6 IS



02

- Versatile high-magnification zoom lens
- With Image Stabilization
- For EF-S compatible cameras

EF-S 15-85mm f/3.5-5.6 IS USM



03

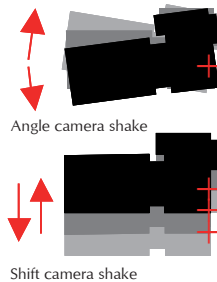
- Compact standard zoom lens
- With Image Stabilization
- For EF-S compatible cameras

New Canon Hybrid Image Stabilizer (IS) HYBRID IS

Canon's latest Hybrid IS technology is the first in the world designed to counter two types of camera shake — angle-based and shift-based shake. The former occurs when there are sudden changes in

camera angle, while shift-based shaking happens when the camera moves parallel to the scene. This type of shake is more pronounced in macro photography and other close-range shooting.

By using two individual sensors to detect the extent of each type of camera shake, Hybrid IS system dramatically enhances the effects of image stabilization, so you get tack sharp images everytime.



NOMENCLATURE



Diagram illustrating the front view of the Canon EOS 7D camera, showing various controls and components:

- Flash-sync Contacts
- Hot Shoe
- Built-in Flash / AF-assist Beam
- Mode Dial
- Microphone
- Flash Button
- Lens Release Button
- Terminal Cover
- Depth-of-field Preview Button
- Red-eye Reduction / Self-timer Lamp
- Multi Function button
- Main Dial
- Shutter Button
- Remote Control Sensor
- Grip



Diagram illustrating the back view of the Canon EOS 7D camera, showing various controls and components:

- Metering Mode Selection / White Balance Selection Button
- AF Mode Selection / Drive Mode Selection Button
- ISO speed setting / Flash exposure compensation button
- AF Start Button
- LCD panel illumination button
- AE Lock / Index / Reduce Button
- AF point selection / Magnify Button
- Live View shooting / Movie shooting switch
- START-STOP button
- Multi Controller
- Light Sensor
- Card Slot Cover
- Setting Button
- Quick Control Dial
- Access Lamp
- Quick Control Dial switch
- Dioptric Adjustment knob
- Eyecup
- Viewfinder Eyepiece
- Speaker
- One-touch RAW+JPEG / Direct print button
- Power Switch
- Quick Control Button
- MENU Menu Button
- Picture Style Selection Button
- Info Button
- Playback Button
- Erase Button
- LCD Monitor

SPECIFICATIONS

TYPE Type: Digital, single-lens reflex, AF/AE camera with built-in flash Recording media: Type I or II CF card, UDMA-compatible Image sensor size: 22.3 x 14.9 mm Compatible lenses: Canon EF lenses (including EF-S lenses) 35mm-equivalent focal length is approx. 1.6 times the lens focal length) Canon EF mount	External flash: EX-series Speedlite (Functions settable with the camera) Flash metering: E-TTL II autofocus Flash exposure: ±3 stops in 1/3- or 1/2-stop increments FE lock: Provided PC terminal: Provided	DIRECT PRINTING Compatible printers: PictBridge-compatible printers Printable images: JPEG and RAW images Print ordering: DPOF Version 1.1 compatible
IMAGE SENSOR Type: CMOS sensor Effective pixels: Approx. 18.00 megapixels Aspect ratio: 3:2 Dust delete feature: Auto, Manual, Dust Delete Data appending	DRIVE SYSTEM Drive modes: Single, High-speed continuous, Low-speed continuous, 10-sec. self-timer/remote control, 2-sec. self-timer/remote control Continuous shooting speed: Max. 8 shots per sec. Max. burst: JPEG Large/Fine: Approx. *130 shots RAW: Approx. *25 shots RAW+JPEG Large/Fine: Approx. *17 shots *Figures are based on Canon's testing standards (ISO 100, Standard Picture Style and 128 GB UDMA 7 CF card)	CUSTOMIZATION Custom Functions: 27 Camera user settings: Register under Mode Dial's C1, C2, and C3 positions My Menu registration: Provided Copyright information: Entry and inclusion enabled
RECORDING SYSTEM Recording format: Design rule for Camera File System 2.0 and Exif 2.21 Image type: JPEG, RAW (14-bit Canon original) RAW+JPEG simultaneous recording possible Recorded pixels: Large: Approx. 17.90 megapixels (5184 x 3456) Medium: Approx. 8.00 megapixels (3456 x 2304) Small: Approx. 4.50 megapixels (2592 x 1728) RAW: Approx. 17.90 megapixels (5184 x 3456) N-RAW: Approx. 10.10 megapixels (3888 x 2592) S-RAW: Approx. 4.50 megapixels (2592 x 1728) Possible	LIVE VIEW SHOOTING Focusing: Live mode, Face Detection Live mode (Contrast detection) Quick mode (Phase-difference detection) Manual focusing (5x/10x magnification possible) Evaluative metering with the image sensor Metering modes: EV 0 - 20 (at 23°C/73°F with EF50mm f/1.4 USM lens, ISO 100) Metering range:	INTERFACE Audio/video OUT/Digital terminal: Analog video (Compatible with NTSC/PAL) stereo audio output For personal computer communication and direct printing (Hi-Speed USB equivalent) Type C (Auto switching of resolution) 3.5mm data stereo mini-jack Compatible with S-Video remote control Compatible with Remote Controller RC-1/RC-5 For connection to Wireless File Transmitter WFT-ESA/B/C/D
Create/select a folder:	MOVIE SHOOTING Movie compression: MPEG-4 AVC Variable (average) bit rate	POWER SOURCE Battery: Battery Pack LP-E6 (Quantity 1) * AC power can be supplied via AC Adapter Kit ACK-E6 * With Battery Grip BG-E7 attached, size-AA/LR6 batteries can be used
IMAGE PROCESSING Picture Style: Standard, Portrait, Landscape, Neutral, Faithful, Monochrome, User Def. 1 - 3 White balance: Auto, Preset (Daylight, Shade, Cloudy, Tungsten light, White fluorescent light, Flash), Custom, Color temperature setting (2500-10000K), white balance correction, and white balance bracketing possible * Color temperature information transmission enabled Noise reduction: Applicable to long exposures and high ISO speed shots Automatic image: Auto Lighting Optimizer brightness correction Highlight tone priority: Provided Lens peripheral: Provided illumination correction	Audio recording format: Linear PCM File type: MOV Recording size and frame rate: 1920x1080 (Full HD): 30p/25p/24p 1280x720 (HD): 60p/50p 640x480 (SD): 60p/50p * 30p: 29.97 fps, 25p: 25.0 fps, 24p: 23.976 fps, 60p/50 94 fps, 50p: 50.0 fps 1920x1080 (30p/25p/24p): Approx. 330 MB/min. 1280x720 (60p/50p): Approx. 330 MB/min. 640x480 (60p/50p): Approx. 165 MB/min. Same as focusing with Live View shooting	Battery information: Remaining capacity, Shutter count, and Recharge performance displayed Battery life: With viewfinder shooting: Approx. 800 shots at 23°C/73°F, approx. 750 shots at 0°C/32°F With Live View shooting: Approx. 220 shots at 23°C/73°F, approx. 210 shots at 0°C/32°F Maximum movie shooting time: Approx. 1 hr. 20 min. at 23°C/73°F Approx. 1 hr. 10 min. at 0°C/32°F (With fully-charged Battery Pack LP-E6)
VIEWFINDER Type: Eye-level pentaprism Coverage: Vertical/horizontal approx. 100% Magnification: Approx. 1.0x (-1 m ³ with 50mm lens at infinity) Eye point: Approx. 22 mm (From eyepiece lens center) Built-in diopter adjustment: -3.0 ~ +1.0 m ⁻¹ (dpt) Focusing screen: Fixed Mirror: Quick-return type Depth-of-field preview: Provided	Focusing: Evaluative and center-weighted average metering with the image sensor Metering modes: *Automatically set by the AF mode EV 0 - 20 (at 23°C/73°F with EF50mm f/1.4 USM lens, ISO 100) Exposure control: Program AE (exposure compensation possible) for movies and manual exposure Exposure compensation: ±3 stops in 1/3- or 1/2-stop increments ISO speed: Automatically set within ISO 100 - 6400, expandable to 12800 With manual exposure, ISO 100 - 6400 set automatically/manually Sound recording: Built-in monaural microphone External stereo microphone terminal provided Two types	DIMENSIONS AND WEIGHT Dimensions (W x H x D): 148.2 x 110.7 x 73.5 mm / 5.8 x 4.4 x 2.9 in. Weight: Approx. 820 g / 28.9 oz. (body only)
AUTOFOCUS Type: TTL-CT-SIR AF dedicated CMOS sensor AF points: 19 (All cross-type) (Centre f/2.8 dual cross) Metering range: EV -0.5 - 18 (at 23°C/73°F, ISO 100) Focus modes: One-Shot AF, AI Servo AF, AI Focus AF, Manual focusing (MF) AF area selection modes: Single point AF, Spot AF, AF point expansion, Zone AF, 19-point AF auto selection AF-assist beam: Small series of flashes fired by built-in flash AF fine adjustment: Enabled with AF Microadjustment	LCD MONITOR Type: TFT color liquid-crystal monitor Monitor size and dots: 3-in. w/ approx. 920,000 dots (VGA) Coverage: Approx. 100% Brightness adjustment: Auto, manual Electronic level: Provided Interface language: 25	OPERATION ENVIRONMENT Working temperature range: 0°C - 40°C / 32°F - 104°F Working humidity: 85% or less Battery Pack LP-E6 Type: Rechargeable lithium-ion battery Rated voltage: 7.2 V DC Battery capacity: 1800 mAh Dimensions (W x H x D): 38.4 x 21 x 56.8 mm / 1.5 x 0.8 x 2.2 in. Weight: Approx. 80 g / 2.8 oz.
EXPOSURE CONTROL Metering modes: 63-zone TTL full-aperture metering * Evaluative metering (linkable to all AF point) * Partial metering (approx. 9.4% of viewfinder at center) * Spot metering (approx. 2.3% of viewfinder at center) * Center-weighted average metering Metering range: EV 1 - 20 (at 23°C/73°F with EF50mm f/1.4 USM lens, ISO 100) Exposure control: Program AE (Full Auto, Creative Auto, Program), shutter-priority AE, aperture-priority AE, manual exposure, bulb exposure ISO speed (Recommended: exposure index): Auto, Creative Auto: Automatically set within ISO 100 - 3200 P, Tv, Av, M, B: ISO 100 - 6400 (in 1/3-stop increments), Auto, or ISO expansion to ISO 12800 Exposure compensation: Manual and AEB (Settable in combination with manual exposure compensation) Settable amount: ±5 stops in 1/3- or 1/2-stop increments (AEB ±3 stops) AE lock: Auto: With One-Shot AF and evaluative metering, AE lock is applied when focus is achieved Manual: By AE lock button	IMAGE PLAYBACK Image display formats: Single, Single + Info (Image-recording quality, shooting information, histogram), 4-image index, 9-image index, image rotate possible Zoom magnification: Approx. 1.5x - 10x Image browsing methods: Single image, jump by 10 or 100 images, by shooting date, by folder, by movie, by stills, by overexposed highlight blink Highlight alert: All images, by folder, by date, movies, or stills Slide show: Enabled (LCD monitor, video/audio OUT, HDMI OUT) Movie playback: Built-in speaker	Battery Charger LC-E6 Compatible battery: Battery Pack LP-E6 Recharging time: Approx. 2 hr. 30 min. Rated input: 100 - 240 VAC (50/60 Hz) Rated output: 8.4 V DC/1.2A Working temperature range: 5°C - 40°C / 41°F - 104°F Working humidity: 85% or less Dimensions (W x H x D): 69 x 33 x 93 mm / 2.7 x 1.3 x 3.7 in. Weight: Approx. 130 g / 4.6 oz.
SHUTTER Type: Electronically-controlled, focal-plane shutter Shutter speeds: 1/8000 sec. to 1/60 sec. (Full Auto mode), X-sync at 1/250 sec. 1/8000 sec. to 30 sec., bulb (Total shutter speed range. Available range varies by shooting mode.)	FLASH Built-in flash: Retractable, auto pop-up flash Guide No.: 12/39 (ISO 100, 1m, in meters/feet) Flash coverage: 15mm lens angle of view Recycling time approx. 3 sec. Integrated Speedlite Transmitter function provided	Battery Charger LC-E6E Compatible battery: Battery Pack LP-E6 Power cord length: Approx. 1 m / 3

VIEWFINDER INFORMATION

Spot Metering Circle

Focusing Screen

Grid

Area AF/Zone AF Frame

<[]> Single AF Point
<[]> Spot AF (Single point)

<[]> White Balance Correction

<[]> Focus Confirmation Light

<[]> Battery Check

<[]> AE Lock/
AEB In-Progress

<[]> FE Lock/
FEB In-Progress

<[]> High-Speed Sync
(FP Flash)

<[]> Flash Exposure
Compensation

Shutter Speed
FE Lock (FEL)
Busy (buSY)
Built-In Flash Recycling (1/2 buSY)
Card Full Warning (Full CF)
Card Error Warning (Err CF)
No Card Warning (No CF)

Maximum Burst

<[]> Monochrome Shooting

ISO Speed

<[]> Highlight Tone Priority

Exposure Level Indicator

Exposure Compensation Amount

AEB Range

Red-Eye Reduction Lamp-On
Indicator

LCD PANEL INFORMATION

The diagram shows a camera's LCD panel with various settings and their corresponding menu options. The panel displays the following information:

- Image-Recording Quality**
 - <L> Large / Fine
 - <M> Medium / Normal
 - <S> Small / Fine
 - <RAW> RAW
 - <M RAW> Medium RAW
 - <S RAW> Small RAW
- Shutter Speed**
 - <METERING> Evaluative Metering
 - <P> Partial Metering
 - <S> Spot Metering
 - <A> Center-Weighted Average Metering
- Aperture**
 - <WB> White Balance Correction
- Shots Remaining**
 - <WB> White Balance Correction
 - <WB> White Balance Bracketing
 - <WB> Self-Timer Countdown
 - <WB> Bulb Exposure Time
- AF Mode**
 - <ONE SHOT> One-Shot AF
 - <AI FOCUS> AI Focus AF
 - <AI SERVO> AI Servo AF
- Drive Mode**
 - <S> Single Shooting
 - <H> High Speed Continuous Shooting
 - <L> Low Speed Continuous Shooting
 - <S> 10-sec. Self-Timer / Remote Control
 - <S> 2-sec. Self-Timer / Remote Control
- White Balance**
 - <AWB> Auto
 - <D> Daylight
 - <S> Shade
 - <C> Cloudy
 - <T> Tungsten Light
 - <W> White Fluorescent Light
 - <F> Flash
 - <C> Custom
 - <K> Color Temperature
- Battery Check**
 - <BATT> Battery Check
- Exposure Level Indicator**
 - <EXP> Exposure Compensation Amount
 - <AEB> AEB Range
 - <FPC> Flash Exposure Compensation
- ISO Speed**
 - <ISO> ISO Speed
- Monochrome Shooting**
 - <M> Monochrome Shooting
- AEB**
 - <AEB> AEB
- Highlight Tone Priority**
 - <HTP> Highlight Tone Priority

CUSTOM FUNCTIONS

C.Fn I: Exposure <ul style="list-style-type: none">• Exposure level increments• ISO speed setting increments• ISO expansion• Bracketing auto cancel• Bracketing sequence• Safety shift• Flash sync. speed in Av mode	C.Fn III: Auto focus/Drive <ul style="list-style-type: none">• AI Servo tracking sensitivity• AI Servo 1st/2nd img priority• AI Servo AF tracking method• Lens drive when AF impossible• AF Microadjustment• Select AF area selec. mode• Manual AF pt. selec. pattern• VF display illumination Display• Display AF points position• Focus display in AI SERVO/MF• AF-assist beam firing• Orientation linked AF point• Mirror lockup
C.Fn II: Image <ul style="list-style-type: none">• Long exp. noise reduction• High ISO speed noise reduction• Highlight tone priority	C.Fn IV: Operation/Others <ul style="list-style-type: none">• Custom Controls• Dial direction during Tv/Av• Add image verification data• Add aspect ratio information

BANGLADESH
J.A.N. Associates
Tel : 880-2-8611444
Fax : 880-2-8610410

BRUNEI
Interhouse Company
Tel : 673-2-653001
Fax : 673-2-653003

CAMBODIA
i-Click (Cambodia) Pte. Ltd.
Tel : 855-23-996638
Fax : 855-23-996639

INDONESIA
P.T. Datascrip
Tel : 62-21-2664-8999
Fax : 62-21-6544811-13
www.canon.co.id

MALAYSIA
Canon Marketing
(Malaysia) Sdn. Bhd.
Tel : 603-78446000
Fax : 603-78450505
www.canon.com.my

MALDIVES
SIMDI Company Pvt. Ltd.
Tel : 960-324819
Fax : 960-318433

MYANMAR
Myanmar Golden Rock
International Co., Ltd.
Tel : 95-1-202092/3/4
Fax : 95-1-202079

NEPAL
Primax International, Inc.
Tel : 977-1-4224079
Fax : 977-1-4229358

PAKISTAN
MBM International
Tel : 92-21-32277093/4
Fax : 92-42-37530948

SINGAPORE
Canon Singapore Pte. Ltd.
Domestic Operations
Tel : 65-6799 8888
Fax : 65-6799 8882
www.canon.com.sg

SRI LANKA
Metropolitan
Office Pvt. Ltd.
Tel : 94-011-4700200
Fax : 94-011-4700266

THAILAND
Canon Marketing
(Thailand) Co., Ltd.
Tel : 66-2-3449999
Fax : 66-2-3449922
www.canon.co.th

VIETNAM
Canon Marketing Vietnam
Co. Ltd.

Ho Chi Minh City
Office & Showroom
Tel : 84-8-382 00466
Fax : 84-8-382 00477
www.canon.com.vn

Hanoi Branch Office
Tel : 84-4-7711 677
Fax : 84-4-7711 678
www.canon.com.vn

Canon

**SOUTH & SOUTHEAST ASIA
REGIONAL HEADQUARTERS**

CANON SINGAPORE PTE. LTD.

1 HarbourFront Avenue, #04-01 Keppel Bay Tower, Singapore 098632
Tel: 65-6799-8888 Fax: 65-6799-8882 www.canon-asia.com

Errors and omissions excepted.
Images are simulated.
Weight and dimensions are approximate.
Subject to change without notice.
Macintosh is a trademark of Apple Computer Inc., registered in the United States and other countries.
Microsoft® and Windows® are either registered trademarks or trademarks of Microsoft Corporation
in the United States and/or other countries. Other names and products not mentioned above may be
registered trademarks of trademarks of their respective companies.
SD Logo is a trademark. Canon is a registered trademarks of Canon Inc.

Warning: Unauthorized recording of copyrighted materials may infringe on the rights of copyright
owners and be contrary to copyright laws.

0168W776