



**Canon**

Delighting You Always



MX897

MORE THAN PERFECTION ON PAPER

**PIXMA**

Quality. Promised.

Office All-in-One

THE PIXMA BLACK SERIES

# THE PROFESSIONAL FOR DOCUMENTS ON TARGET, EVERY TIME

Expect nothing but the best from the PIXMA MX897.

This elegant black device's compact profile masks its myriad capabilities and versatility. On top of that, it's got features such as wireless connectivity, a remarkably intuitive Dual Function Panel and a host of creative options – so jobs aren't just executed perfectly, but with panache, too.

## JUST HOW FAST IS YOUR PRINTER?

Printers' speeds vary across different makes, so the only way to accurately find out how fast one is to compare it against a universal benchmark. Canon uses the ISO/IEC 24734, ISO/IEC 24735 and ISO/IEC 29183 Print/Copy Measurement standards precisely for this purpose, so you can be sure you always get the performance you expect, right out of the box.



MX897

### Photo Print Speed

approx.  
**20sec.**  
Color  
10x15cm (4x6") borderless

### ISO Standard Speed

approx.  
**12.5ipm**  
Mono  
Document Printing

Measured by ISO / IEC 24734 Standard

approx.  
**9.3ipm**  
Color

approx.  
**7.0ipm**  
Color  
ADF Copy

Measured by ISO / IEC 24735 Standard

# DIVINELY DIFFERENT

## PIXMA CLOUD LINK



With Canon's PIXMA Cloud Link, you can directly access and print photo albums and ready-made templates stored online, without a PC.

### Online Album Photo Print

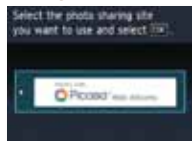
Select "Advanced photo"



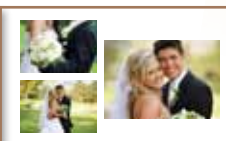
Select "Online Album print"



Select photo sharing site



\*A Picasa account is required.

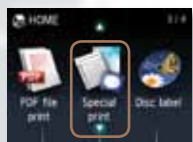


Select album and photos to print



### Web Template Print

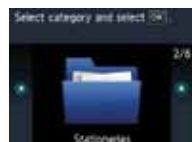
Select "Special print"



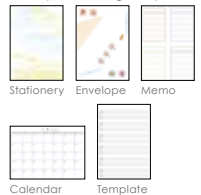
Select "Web template print"



Select category



Canon Server  
Templates are updated regularly



Select template to print



## FULL HD MOVIE PRINT



Keep those memorable moments permanent in time. The Full HD Movie Print function allows you to pick out and print scenes from videos as stills.



\*Only for ".mov" files created by Canon digital cameras. Requires Canon ZoomBrowser EX 6.5 or later, or Canon ImageBrowser 6.5 or later.

### Merge Frames



### Layout



### Clearer Images



## FUN FILTER EFFECT



With the PIXMA MX897's Fun Filter Effect, you can jazz up your images with artistic effects – such as Fish-Eye, Miniature, Toy Camera and more – in just a few clicks.

### Fish-Eye



### Miniature



### Toy Camera



SPECIAL  
FEATURES



# PRECISE PRINTS

## INDIVIDUAL INK TANKS



The PIXMA MX897 operates on five individual color ink tanks, which help cut down on ink wastage and operating costs because only colors that have been depleted need to be replaced.

## HYBRID INK SYSTEM

Canon's patented hybrid ink system employs both pigment and dye-based inks, that produce richly colored images and text that's boldly defined even when it's printed over an image.



# CRISP, CLEAR COPIES

## FASTER OPERATION

Now you can begin copying another document even as you wait for a previous copy to be completed. Simply put the next document to be copied on the platen glass and press the illuminated Start key to place the next job into the print queue.

## AUTOMATIC TWO-SIDED COPYING



Load up to 35 sheets in the integrated Duplex Auto Document Feeder. The duplex feeder also enables automatic feeding and copying of two-sided original documents.

## ADVANCED COPY FUNCTIONS

Frame Erase: Saves black ink by removing unsightly black borders that show up on copies made from thick books and document stacks.



Without Frame Ease



With Frame Ease

PRINT  
&  
COPY

# SUPERB SCANS

## QUICK, QUALITY SCANNING

SCAN

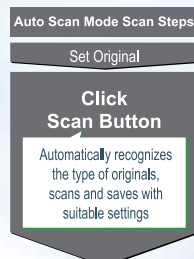
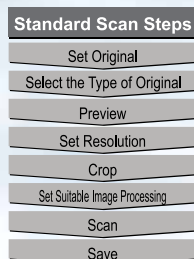


2400x4800dpi

It takes approximately 18 secs for the PIXMA MX897's scanning to deliver an A4 color scan in 300dpi resolution.

## AUTO SCAN MODE

Automatically recognizes the document type, then picks the appropriate file format settings – as well as the precise image categorization – and makes the optimal scan at the touch of a button.



# MP NAVIGATOR EX

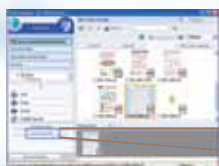
### Image Categories

Organizes scanned images into categories (works with Auto Scan Mode).

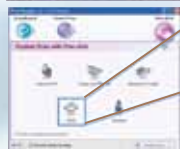


### OCR Text Data Conversion

Extract text from a scanned image to create a .TXT text file, and use appropriate software to edit, copy, save or email.



Convert to text file



Copy/Save



Microsoft Notepad

### Add Security To Scanned PDF Files (Windows only)

Assign passwords to PDF files to limit access or restrict printing; provide various levels of access by creating multiple passwords for a single file.



Checkbox enables password to limit access

MP Navigator EX UI showing the checkbox that enables password



MP Navigator EX UI showing PDF files with passwords that limit access

SCAN

# FUNCTIONAL FAXES

The PIXMA MX897's Super G3 fax gets what you need out fast, thanks to its 33.6kbps transmission speed. **33.6 Kbps**



You'll never lose any information either – a 250-page fax memory will store everything should you run out of paper, plus you can save up to 100 contacts with the Coded Speed Dialing capability.

## STRINGENT SECURITY

Ensure faxes get sent to your intended recipients.



**Functions that prevent a FAX from being sent to the wrong location:**

### FAX number re-entry

The sender will be asked to re-enter the recipient's number for confirmation

1st



2nd



In case the 2nd number is different from the 1st one, the FAX isn't sent

### Check RX FAX info



Will not send FAX

TTI FAX information 0123456789



Checks whether the dialed number and the recipient's registered number are the same. If not, the FAX isn't sent

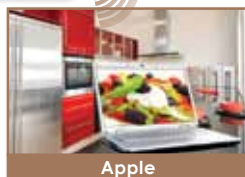
FAX



# CONVENIENT CONNECTIVITY

## SHARE THE CONVENIENCE

The PIXMA MX897 complies with popular wireless authentication methods such as Wi-Fi Protected Setup (WPS) and Windows Connect Now (WCN), so setting up the printer on a secured wireless network is quick and easy. The printer also supports installation over a wired LAN (Ethernet) for added convenience when setting up in an existing office network.



The PIXMA MX897 is Wi-Fi- and Bluetooth-enabled, which allows connection directly with smartphones or other wireless devices, so you can print and scan on the go. You can also link up via PictBridge, memory cards, digital cameras and thumb drives.

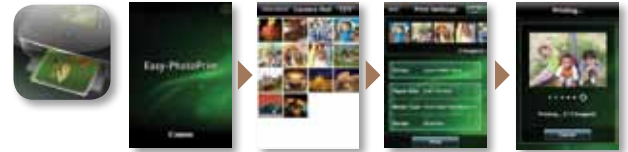


Memory Card



You can easily snap photos using your iOS or Android mobile devices, then print them directly to your PIXMA printer.

### Canon iEPP (For iOS)

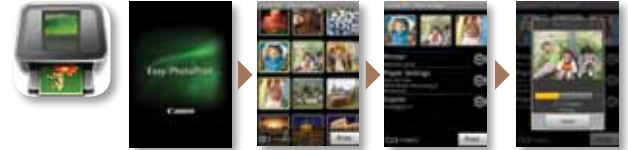


1. Launch the app.

2. Select the photo.

3. Touch the "Print" key.

### Canon EPP (For Android)\*



1. Launch the app.

2. Select the photo.

3. Touch the "Print" key.

\* Subject to Android device compatibility

### Get your Canon mobile printing apps here



QR code for Android



QR code for iOS

## CHEW ON THIS



The PIXMA MX897 is compatible with Apple AirPrint, which means you can print whatever you need while you're on the go, directly from your iPad, iPhone or iPod touch.

You can get the job done quickly and seamlessly without the need to install software, drivers or cables.

Best of all, just about everything you might want to print is supported – from documents, to photos, web pages, material from supported apps and more.

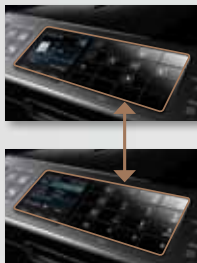
CONNECTIVITY

# USER-FRIENDLY OPERATION

## DUAL FUNCTION PANEL



When performing print, copy or scan jobs, the Dual Function Panel intuitively displays the navigation keys for these functions. It automatically transforms into a numeric keypad when you're in fax mode.



## LARGE LCD VIEWER



The PIXMA MX897's large 3.0-inch color LCD Viewer means you can preview all projects perfectly before producing them.

# ADVANCED MEDIA HANDLING

## 2-WAY PAPER FEEDING



Two-Way Paper Feeding lets you load up to 300 sheets of plain paper. You can even load two types of paper media in different trays and switch them without having to remove an existing stack.



## AUTO DUPLEX PRINTING



The Auto Duplex Printing function enables you to print or copy on both sides without having to turn over the printed side manually.

EASY  
OPERATION  
& ECO-  
FRIENDLINESS

# ECO-FRIENDLINESS

## ECO MODE



The Eco Mode offers quick and easy access to the Auto Duplex Printing function so you can save on resources. You can also program the printer to conserve energy by shutting down automatically after a period of inactivity.

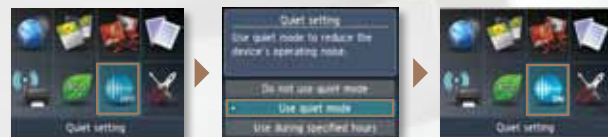


## QUIET MODE

The Quiet Mode enables the printer to operate with minimum noise.

### Home Screen

Quiet Setting is added to home screen menus.



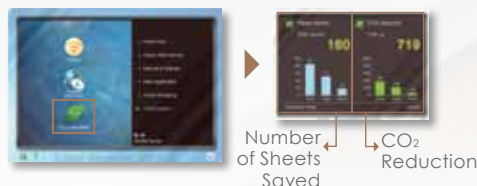
### Solution Menu EX

Setting dialog box opens by clicking Quiet Setting icons.



## ECO INFORMATION

The PIXMA MX897's Eco Information panel lets you know how much paper and carbon emissions you've cut down on by using the Auto Duplex Mode.





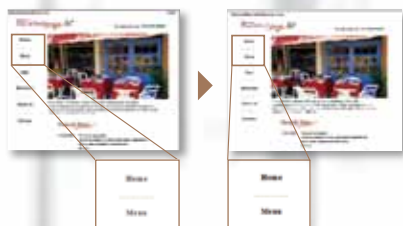
# ENHANCED EASY-WEBPRINT EX

Get a handle on Web content. The Easy-WebPrint EX program allows you to compile, arrange, edit and manage all information imported from the Internet quickly and easily.



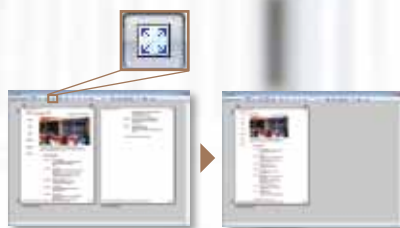
## Gray-To-Black Legibility

Enhance the legibility of gray text on web pages by printing it in crisp, easy-to-read black.



## Single Click Fit-To-Page

With one click, enlarge or reduce the size of clipped web content so that it fits onto a single sheet of paper.



## Clip & Merge

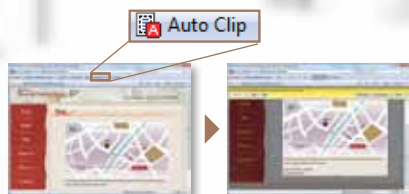
Save time, space and paper by clipping, editing, resizing and printing only what you want from web pages.

You can even insert images stored on your PC and rearrange the layout before printing.



## Auto Clipping

With one click, clip the main part of the web page for printing.



## Save Paper

Paper-saving features include reduced fit-to-page layout and save to PDF options.



# EASY-PHOTO PRINT EX

The EasyPhotoPrint EX program says it all - it makes creating and printing photo albums, calendars, travel journals and other multifaceted projects really convenient.

Along with quick access to creative features such as the Fun Filter Effect, the program also lets you to tap into a supply of hundreds of thousands of quality Flickr® images and import them directly to your projects\*.



\* It is unlawful to reproduce or edit the copyrighted work of another person without permission from the copyright holder, except for personal use, use within the home, or other use within the limited scope as defined by the copyright. Additionally, reproducing or editing photographs of people may infringe on portrait rights.

SOFTWARE  
&  
TECHNOLOGY

CREATIVE  
PARK  
PREMIUM  
FREE DOWNLOADS!

# HIT IT OUT OF THE PARK



## CREATIVE PARK PREMIUM EXCLUSIVE ACCESS!



© Brown & Bigelow, Inc./D.P.A. Licensed by Cosmo Merchandising  
© F.W. & Co.

™ & © Eric Carle, LLC.

© P & Co Ltd 2012

© F.W. & Co.  
© LC 2012

© LC 2012

This printer and Canon Original Inks give you exclusive access to Canon's CREATIVE PARK PREMIUM website (via Solution Menu EX). It features magnificent photos and illustrations from world renowned artists. And it's yours **FREE!** This professional-quality content is available when all Canon Original Inks are properly installed. So bring out the best in yourself and your printer – visit Canon Creative Park Premium!

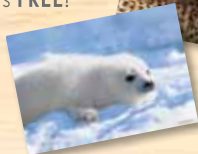
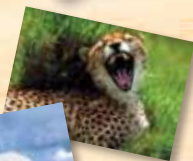
NOTE: CREATIVE PARK PREMIUM is a premium content service available exclusively to users only when all of the colors of genuine Canon Inks are installed.

## CREATIVE PARK

[www.canon.com/c-park](http://www.canon.com/c-park)



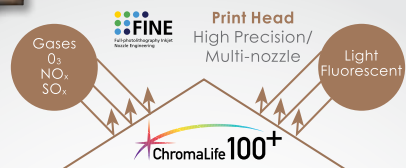
At Canon Creative Park, your creativity comes alive! Download everything from 3D paper projects to gift and card templates. Best of all, it's **FREE!**



FREE DOWNLOADS!  
CREATIVE  
PARK

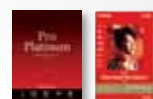
Let your imagination run wild with Creative Park Premium, an exclusive online service for selected PIXMA owners that gives you access to a wide selection of professional photos and illustrations from world-renowned artists.

These free downloads can be used to create original prints, posters, cards and other customized pieces.



CLI-726BK/C/M/Y  
New Dye-Based Inks

Rich Color Reproduction/Further Longevity



Genuine Photo Media

Bright Coloration/High Longevity

## CHROMALIFE-LONG IMAGES

Canon's distinctive **ChromaLife100+** technology ensures the memories live on. It combines dye-based inks and genuine photo paper to produce non-fading prints that will last up to 300 years under proper storage conditions.

Gas Fastness Approx.  
20 Years

Original print



20 years later



No noticeable color change

\*Under proper storage conditions. See specifications for details.



# THE PERFECT FINISH

Get the most out of your device – pair it with Canon's extensive range of paper media that includes anything from super high gloss photo paper to photo stickers.

Canon's individual ink cartridges also offer great performance and hassle-free maintenance.

## Photo Printing



**PT-101**  
Photo Paper  
Pro Platinum  
(Super High Gloss)

- 300g/m<sup>2</sup>
- 4x6", A4



**PP-201**  
Photo Paper  
Plus Glossy II

- 260g/m<sup>2</sup>
- 4x6", A4



**GP-501**  
Glossy Photo  
Paper

- 170g/m<sup>2</sup>
- 4x6", A4



**SG-201**  
Photo Paper  
Plus Semi-Gloss

- 270g/m<sup>2</sup>
- 4x6", 8x10", A4

## Special Projects



**MP-101**  
Matte Photo  
Paper

- 170g/m<sup>2</sup>
- 4x6", A4



**TR-301**  
T-Shirt  
Transfers

- 143g/m<sup>2</sup>
- A4  
(10 sheets/pack)



**PS-101**  
Photo Stickers

- 190g/m<sup>2</sup>
- Stickers  
(5 sheets/pack)  
(16 photo  
stickers/sheet)



**HR-101N**  
High Resolution  
Paper

- 106g/m<sup>2</sup>
- A4

## Ink Cartridges

**PGI-725**  
Pigment  
Black

**725**  
PGBK



**CLI-726**  
Dye  
Cyan

**726**  
C



**CLI-726**  
Dye  
Magenta

**726**  
M



**CLI-726**  
Dye  
Yellow

**726**  
Y



**CLI-726**  
Dye  
Black

**726**  
BK



### \*CHROMALIFE100\* PROPER STORAGE CONDITIONS

#### 300-year life in an album:

<Criteria for estimation> The permanence presented above are made using an accelerated dark storage test designed for silver-halide photos (ISO/FD18909). Samples are printed with an optical density of 1.0 (each black, cyan, magenta, yellow) and kept in a controlled environment of high temperature and 50% relative humidity. The test environment is designed to accelerate color fading. The rate of the decrease in the optical density and the rate of yellow discoloration of the paper are measured. Finally, the results are extrapolated to the length of time that a printed image is kept in an environment of 23°C 50% RH.

#### 30-year lightfastness:

<Criteria for estimation> When displayed in a glass frame in a typical indoor space (estimating 500lux / 10 hours per day) without direct sunlight. Estimates for lightfastness are made under the following test conditions. Light source: White fluorescent light 70,000lux; Temperature: 24°C; Humidity: 60% RH; A 2mm thick glass is placed on the sample with an air gap between the glass and the sample during accelerated testing.

#### 20-year gas fastness:

<Criteria for estimation> Estimates for gas fastness are made under the following test conditions: Temperature (24°C) and humidity (60% RH) are controlled in an environment of mixed gases of O<sub>3</sub>, NO<sub>x</sub> and SO<sub>x</sub>. The ratio of the gases is typical to indoor air composition [O<sub>3</sub>: NO<sub>x</sub>: SO<sub>x</sub> = 3:19:1] with 100-times concentration in order to accelerate fading.

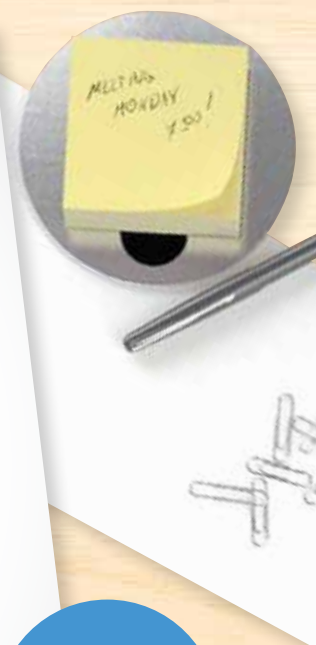
#### <Criteria for estimation of print longevity>

Estimates for image permanence are made using the Wilhelm Imaging Research, Inc. Endpoint criteria: Accumulated illuminance causes a monochromatic / reflective optical density loss of 20-35% (figures set respectively for each color, starting density of 1.0). Accumulated illuminance causes a difference in color balance of yellow, magenta and cyan (each component in composite black) of 12-18%.

#### <Tips>

Making your printed images last longer: Light, environmental gases, high temperature and humidity can accelerate color fading. When displaying your photographs, avoid high-intensity lighting and use glass-filtered frames. Photos stored in the dark, using archival quality albums or storage materials, will tend to last longer than photos that are exposed to light. Avoid high temperatures and high humidity to promote the image permanence of your photos.

Note: The image permanence estimates presented above may vary depending on display / storage conditions. The expressed numbers of years estimates are the result of simulated, accelerated tests conducted by Canon Inc., and do not represent a product guarantee.



**PAPER  
MEDIA &  
CARTRIDGES**



# SPECIFICATIONS

Model			PIXMA MX897
PRINT			
Maximum Printing Resolution			9600 (horizontal) <sup>*1</sup> x 2400 (vertical) dpi
Print Head / Ink	Type		Individual Ink Cartridge
	Total Number of Nozzles		4,608
	Ink Droplet Size (minimum)		1pl
	Ink Tank		PGI-725 (Pigment Black), CLI-726 (Cyan / Magenta / Yellow / Black)
Print Speed	Document: Color <sup>*2</sup>	ESAT / Simplex	approx. 9.3ipm
	Document: B/W <sup>*2</sup>	ESAT / Simplex	approx. 12.5ipm
	Photo (4x6") <sup>*2</sup>	PP-201 / Borderless	approx. 20sec.
Printable Width			Up to 203.2mm (8 inches), Borderless: Up to 216mm (8.5 inches)
Printable Area	Borderless Printing <sup>*3</sup>		Top / Bottom / Right / Left margin: each 0mm (Supported Paper Size: A4, LTR, 4x6", 5x7", 8x10")
	Bordered Printing		Top margin: 3mm, Bottom margin: 5mm Left / Right margin: each 3.4mm (LTR, LGL: Left: 6.4mm, Right: 6.3mm)
	Bordered Auto Duplex Printing		Top margin: 5mm, Bottom margin: 5mm, Left / Right margin: each 3.4mm (LTR, LGL: Left: 6.4mm, Right: 6.3mm)
Paper Size <sup>*4</sup>			A4, A5, B5, LTR, LGL, 4x6", 5x7", 8x10", Envelopes (DL, COM10)
Paper Handling (Front Tray) (Maximum Number)	Plain Paper		A4, A5, B5, LTR, LGL = 150
	High Resolution Paper (HR-101N)		A4 = 80
	Photo Paper Pro Platinum (PT-101)		4x6" = 20, A4 = 10
	Photo Paper Plus Glossy II (PP-201)		4x6" = 20, A4 = 10
	Photo Paper Plus Semi-Gloss (SG-201)		4x6" = 20, A4 / 8x10" = 10
	Glossy Photo Paper "Everyday Use" (GP-501)		4x6" = 20, A4 = 10
	Matte Photo Paper (MP-101)		4x6" = 20, A4 = 10
	Photo Stickers (PS-101)		1
	T-Shirt Transfer (TR-301)		1
Paper Handling (Cassette) (Maximum Number)	Envelope		European DL / US Com. #10 = 10
	Plain Paper		A4, A5, B5, LGL = 150
Support Media for Auto Duplex Printing	Type		Plain Paper (Bordered)
	Size		A4, A5, B5, LTR
Paper Weight	Rear Tray		Plain Paper: 64-105 g/m <sup>2</sup> , Canon specialty paper: max paper weight: approx. 300g/m <sup>2</sup> (Photo Paper Pro Platinum PT-101)
	Cassette		Plain Paper: 64-105 g/m <sup>2</sup>
SCAN			
Scanner Type			Flatbed Platen & Duplex Auto Document Feeder (ADF)
Scanning Method			CIS (Contact Image Sensor)
Optical Resolution <sup>*5</sup>			2400 x 4800dpi
Scanning Bit Depth (Input / Output)	Grayscale		16 / 8bit
	Color		48 / 24bit (RGB each 16 / 8bit)
Line Scanning Speed <sup>*6</sup>	Grayscale		1.4 ms / lines (300dpi)
	Color		4.2 ms / lines (300dpi)
Scanning Speed <sup>*7</sup>	Reflective	A4 Color / 300dpi	approx. 18sec.
Maximum Document Size	Flatbed		A4, LTR (216 x 297mm)
	ADF		A4, LTR, LGL
COPY			
Maximum Document Size			A4, LTR (216 x 297mm) (ADF = A4, LTR, LGL)
Compatible Media	Size		A4, A5, B5, LTR, LGL, 4x6", 5x7"
	Type		Plain Paper
			Photo Paper Pro Platinum (PT-101)
			Photo Paper Plus Glossy II (PP-201)
			Photo Paper Plus Semi-Gloss (SG-201)
			Glossy Photo Paper "Everyday Use" (GP-501)
			Matte Photo Paper (MP-101)
Image Quality			3 positions (Fast, Standard, High)
Density Adjustment			9 positions, Auto intensity (AE copy)* <sup>*Not supported for ADF</sup>
Copy Speed <sup>*8</sup>	Document: Color	sFCOT / Simplex	approx. 14sec.
	Document: Color	sESAT / Simplex	approx. 7.4ipm
	Document (ADF): Color	ESAT / Simplex	approx. 7.0ipm
Multiple Copy	Black / Color		max. 99 pages

Specifications are subject to change without notice.

\*1 Ink droplets can be placed with a pitch of 1/9600 inch at minimum.

\*2 Document print speeds are the averages of ESAT in Office Category Test for the default mode, ISO / IEC 24734, excluding time to print the first set.

Photo print speed is based on the default setting using ISO / JIS-SCID N2 on Photo Paper Plus Glossy II and does not take into account data processing time on host computer.

Print speed may vary depending on system configuration, interface, software, document complexity, print mode, page coverage, type of paper used etc.

\*3 Paper types NOT supported for borderless printing are as follows: Envelope, High Resolution Paper, T-Shirt Transfer, Photo Stickers.

\*4 The paper size that can be fed from the cassette are A4, A5, B5, LTR size.

\*5 Optical resolution is a measure of maximum hardware sampling resolution, based on ISO 14473 standard.

Model		PIXMA MX897
FAX		
Type		Super G3
Applicable Line		Analog
Transmission Speed <sup>*9</sup>	Black	approx. 3sec. (33.6kbps)
Fax Resolution	Black	8pels/mm x 3.85lines/mm (Standard) 8pels/mm x 7.7lines/mm (Fine) 300 x 300dpi (Extra Fine)
Print Size		A4, LTR, LGL
Scanning Width		208mm (A4), 214mm (LTR)
Modem Speed		maximum 33.6kbps (Automatic fall back)
Compression	Black	MH, MR, MMR
Gradation	Black	256 levels
ECM (Error Correction Mode)		ITU-T T.30 compatible
Address Book	Coded Speed Dialing	max. 100 locations
	Group Dialing	max. 99 locations
Transmission / Reception Memory <sup>*10</sup>		approx. 250 pages
PC FAX		
Type		Windows: via FAX driver, Mac: Not Applicable
Destination Number		1 location
NETWORK		
Protocol		TCP / IP
Wired LAN	Network Type	IEEE802.3u (100BASE-TX) / IEEE802.3 (10BASE-T)
	Data Rate	100M/10Mbps (auto switchable)
Wireless LAN	Network Type	IEEE802.11n / IEEE802.11g / IEEE802.11b (infrastructure mode)
	Frequency Band	2.4GHz
	Data Rate (Standard Value) <sup>*11</sup>	IEEE802.11n: 150Mbps IEEE802.11g: 54 Mbps IEEE802.11b: 11 Mbps
	Range	indoor 50m (depends on the transmission speed and conditions)
	Security	WEP64 / 128bit, WPA-PSK (TKIP / AES), WPA2-PSK (TKIP / AES)
SYSTEM REQUIREMENTS		
Windows	(Please visit <a href="http://www.canon-asia.com">www.canon-asia.com</a> to check OS compatibility and to download the latest driver updates)	Windows XP SP2, XP SP3 / Windows Vista SP1, Vista SP2 / Windows 7, 7 SP1
Macintosh		Macintosh Mac OS X v10.5 and later
GENERAL SPECIFICATIONS		
Quick Start		approx. 3sec.
Operation Panel	Display	LCD (3.0 inch / 7.5 cm TFT color)
Auto Document Feeder (ADF)	Paper Handling (Plain Paper)	A4, LTR = 35, LGL = 30
	Auto Duplex	Available
Interface		Wireless LAN b/g/n, Ethernet 10/100, USB 2.0 Hi-Speed, PictBridge, Memory Card Slots, Bluetooth v2.0 (Optional: BU-30)
Self-Opening Paper Output Tray		Available
Operating Environment		Temperature: 5 - 35°C, Humidity: 10 - 90% RH (no dew condensation)
Storage Environment		Temperature: 0 - 40°C, Humidity: 5 - 95% RH (no dew condensation)
Acoustic Noise (PC Print)	Photo (4x6") <sup>*12</sup>	approx. 45.5dB (A)
Power		AC100 - 240V, 50 / 60Hz
Power Consumption	Standby	approx. 2.0W
	Copying <sup>*13</sup>	approx. 23W
Environment	Regulation	RoHS (EU, China), WEEE (EU)
	Eco-Label	Energy Star
Monthly Duty Cycle		up to 7,000 pages
Dimension (WxDxH)		approx. 491 x 448 x 218mm
Weight		approx. 11.7kg

<sup>\*6</sup> The fastest speed in Hi-Speed USB on Windows PC. Transfer time to computer is not included. Increasing the scanning resolution will limit the maximum possible scanning area.

<sup>\*7</sup> Color document scan speed is measured with ISO / IEC 24735 Annex C Test Chart A.

Scan speed indicates the time measured between pressing the scan button of the scanner driver and the on-screen status display turns off.

Scan speed may vary depending on system configuration, interface, software, scan mode settings and document size etc.

<sup>\*8</sup> Copy speeds are the average of sFCOT and sESAT, ISO / IEC 29183.

ADF copy speed is the average of ESAT in General Performance Test for the default simplex mode, ISO / IEC 24735, excluding time to copy the first set.

Copy speed may vary depending on document complexity, copy mode, page coverage, type of paper used etc., and does not take into account warm-up time.

<sup>\*9</sup> Black & white document fax transmission speed is based on default setting using ITU-T No.1 chart.

Color document fax transmission speed is based on default setting using Canon Color Fax Test Sheet.

Actual transmission speed may vary depending on document complexity, fax settings at receiving end, and line conditions etc.

<sup>\*10</sup> Page count is based on ITU-T No.1 chart or Canon FAX Standard Chart No.1.

<sup>\*11</sup> These values are a theoretical maximum transmission speed between the printer and an equivalent network device, and do not indicate the actual transmission speed obtained.

<sup>\*12</sup> When printing ISO / JIS-SCID N2 pattern on 4x6" Photo Paper Plus Glossy II using default settings.

<sup>\*13</sup> Copy: When copying ISO / JIS-SCID N2 (printed by inkjet printer) on A4 size plain paper using default settings.



Delighting You Always

#### CANON OFFICES

##### INDIA:

Canon India Pvt. Ltd.  
Tel: 91-124-4160 000  
Fax: 91-124-4160 011  
www.canon.co.in

##### MALAYSIA:

Canon Marketing (Malaysia)  
Sdn. Bhd.  
Tel: 603-7844 6000  
Fax: 603-7845 0505  
www.canon.com.my

##### SINGAPORE:

Canon Singapore Pte. Ltd.  
Tel: 65-6799 8888  
Fax: 65-6798 8882  
www.canon.com.sg

##### THAILAND:

Canon Marketing (Thailand) Co. Ltd.  
Tel: 66-2-3449 999  
Fax: 66-2-3449 922  
www.canon.co.th

##### VIETNAM:

Canon Singapore Pte. Ltd.  
Ho Chi Minh City Representative  
Office & Showroom  
Tel: 84-8-382 00466  
Fax: 84-8-38200477  
www.canon.com.vn

Hanoi Representative Office  
Tel: 84-4-7711 677  
Fax: 84-4-7711 678  
www.canon.com.vn

#### SOUTH & SOUTHEAST ASIA REGIONAL HEADQUARTERS:

### CANON SINGAPORE PTE. LTD.

1 HarbourFront Avenue #04-01 Keppel Bay Tower  
Singapore 098632  
Tel: 65-6799 8888 Fax: 65-6799 8882  
www.canon-asia.com

#### CANON BUSINESS PARTNERS

##### BANGLADESH:

J.A.N. Associates  
Tel: 880-2-8611 444  
Fax: 880-2-8610 410

##### BRUNEI:

Interhouse Company  
Tel: 673-2-653 001  
Fax: 673-2-653 003

##### CAMBODIA:

i-Click (Cambodia) Pte. Ltd.  
Tel: 855-23-996 638  
Fax: 855-23-996 639

##### INDONESIA:

P. T. Datascrip  
Tel: 62-21-2664 8999  
Fax: 62-21-6544 811-13  
www.canon.co.id

##### MALDIVES:

SIMDI  
Tel: 960-333 4421  
Fax: 960-333 4424

##### MYANMAR:

Myanmar Golden Rock  
International Co. Ltd.  
Tel: 95-1-2020 92/3/4  
Fax: 95-1-202 079

##### NEPAL:

International Electronics Concern (P) Ltd.  
Tel: 977-1-4421 991  
Fax: 977-1-4421 909

##### PAKISTAN:

MBM International  
Tel: 92-21-3227 77093-4  
Fax: 92-21-3438 6308

##### SRI LANKA:

Metropolitan Computers (Pvt.) Ltd.  
Tel: 94-11-2437 797  
Fax: 94-11-2448 980

Dealer's Stamp

Because its products are subject to continuous improvement,  
CANON reserves the right to modify product design and  
specifications without notice and without incurring any obligations.