



imagePRESS  
C800 / C700 / C600

Canon

Delighting You Always



NEW LEVELS OF  
QUALITY AND  
PRODUCTIVITY IN  
**COLOUR PRODUCTION**

Business *Can* be simple

# THE PERFECT CHOICE FOR EVERY PRINT ENVIRONMENT

The imagePRESS C800/C700/600 incorporates a range of innovative technologies within a small and scalable footprint, to reliably deliver outstanding quality, excellent end-to-end productivity, smart flexibility and versatile media handling.



The innovative imagePRESS C800/C700/C600 has been designed to meet all the challenges of the colour production market. Ideal for busy CRD and GA environments, the imagePRESS C800/C700/C600 combines exceptional image quality with powerful productivity and offers the versatility to create extensive and innovative applications across a wide range of media, including heavyweight coated stocks and envelopes.

It can flexibly handle everything from short runs to complex variable data printing for personalised print communications – all within a small but scalable footprint. And with extended finishing capabilities and fast turnarounds it's the perfect choice to help you meet every print challenge. Plus it offers an excellent return on investment – bringing time and cost savings to demanding CRDs and revenue generating opportunities to Graphic Arts environments.

# MAXIMUM PRODUCTIVITY

## IMPRESSIVE PRODUCTION SPEEDS

The Advanced Twin Belt Fusing unit is high production speeds of up to 80 ppm are possible on a wide range of media. The imagePRESS C800/C700/C600 is capable of running at maximum speed on heavy stock up to 220gsm and on uncoated stocks it offers exceptional production speeds. It achieves this outstanding productivity thanks to the innovative Induction heating technologies that heat up the fusing belt quickly and efficiently and the improved belt cooling system. The imagePRESS doesn't sacrifice quality for productivity and these impressive speeds will increase the productivity of your print room and allow you to meet your customer's demand, increase customer loyalty and grow your business.

## AUTO DUPLEX SUPPORT

Duplex printing is in high-demand amongst print professionals as this opens up revenue opportunities, especially for heavyweight stocks. With a compact and efficient path design, the imagePRESS C800/C700/C600 lets you quickly and effortlessly produce duplex print jobs on heavy weight media up to 300 gsm, with highly accurate front to back registration. Thanks to this technology, the imagePRESS C800/C700/C600 delivers a better performance and gives you the opportunity to handle more demanding jobs without manual intervention and impact on your print room productivity.

# VERSATILE MEDIA HANDLING

## WIDE RANGE OF APPLICATIONS

The most outstanding and eye-catching applications depend on the creativity and the material used for the job, which includes a mix of different substrates. The imagePRESS C800/C700/C600 has been designed to provide you with outstanding performance and impressive media handling. The Elastic Intermediate Transfer Belt – which increases toner transfer efficiency, including on textured or recycled paper – the imagePRESS C800/C700/C600 can handle heavyweight stocks and produce extensive applications ranging from leaflets to the highest-quality brochures and other marketing communications that will give you and your customer the return on investment desired.

## ADVANCED FEEDING TECHNOLOGY

The imagePRESS C800/C700/C600 features a new multi-drawer paper deck with enhanced air separation technology and optimum roller pressure, which handles a wide variety of media and prevents multi feeds even of coated stock. This new piece of technology can blow air at different speeds based on the type of paper and weight, virtually eliminating paper jams and significantly increasing your print room's efficiency and productivity.



**IMPRESSIVE NEW TECHNOLOGIES  
FOR OUTSTANDING BENEFITS**

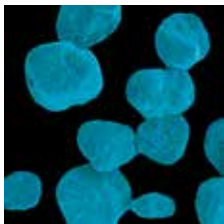
# HIGH QUALITY FOR ALL PRINTS

## CONSISTENTLY VIVID (CV) TONER FOR COLOUR CONSISTENCY

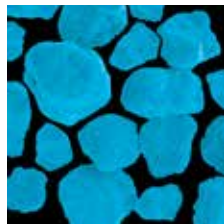
CV toner is Canon's newly developed toner, which delivers higher quality print combined with high speeds of up to 80 ppm. The new para-shell structure, ultra-fine toner particles and the toner's smooth surface, it's improved toner transfer efficiency for enhanced colour consistency and accuracy across a wide variety of media, including embossed and rough paper surfaces for custom and premium applications.

The efficient toner transfer reduces toner wastage, energy consumption and paper deformation. CV toner features a broad colour spectrum for rich and vivid colours that will produce high quality marketing materials and the right colour on all your corporate documents. It has a gloss optimisation technology allowing a high gloss finish on coated media and a matt finish on plain/low gloss media.

The enhanced developer unit is designed to cool the internal temperature and maintain high quality image in heavy duty environments. All these new features mean delighted customers willing to grow their business together with yours.



V Toner

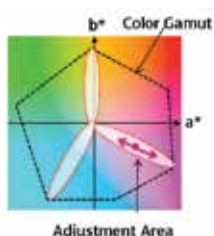


New CV Toner

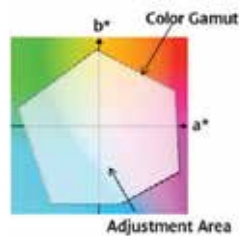
## ENHANCED COLOUR CALIBRATION

Auto Correct Color Tone (ACCT) is the technology to get mixed colour back to initial condition based on values that are registered in the first ACCT at installation executed by service technician. For the first time in a Canon light production device, multidimensional mixed colour calibration (rather than CMYK single colour calibration). As the previous Auto Gradation Adjustment (AGA) focuses correcting single colours.

Auto Correct Color Tone can cover other colours that are not corrected by Auto Gradation Adjustment. A Special chart to be measured by reader is prepared for ACCT. This allows to make colour adjustment with a wider colour gamut that printer can reproduce.



Auto Gradation Adjustment (AGA)

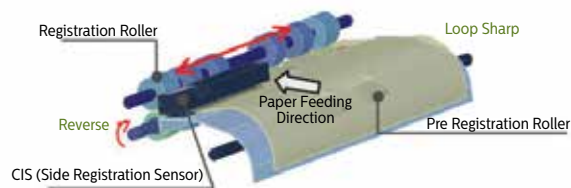


Auto Correct Color Tone (ACCT)

## COMPACT REGISTRATION TECHNOLOGY (CRT)

Compact and highly accurate registration technology assures best-in-class results whether printing 1 sheet or thousands. The CRT combines digital sensors together with registration rollers to ensure that every single sheet is correctly positioned during print runs and that the image is placed in the same location on every sheet, for the highest quality results every time. This new technology also provides full control of the registration process, allowing you to satisfy the needs of even your most demanding customers.

### COMPACT & HIGH ACCURATE REGISTRATION MODULE



Skew and side registration correction mechanism

## VIBRANT IMAGES

The imagePRESS C800/C700/C600 features a 32 beam Vertical Cavity Surface Emitting (VCSEL) laser unit with multi-exposure technology that achieves an exceptional 2,400 x 2400 dpi resolution – enabling even higher precision in the printing of text and images, while supporting high productivity. Image distortion compensation improves digital scale up and down so operators can easily adjust and correct images, including fan correction.

This new technology also allows operators to choose from a selection of the most versatile screen patterns available. They can select either new dot-screen patterns for optimised quality closer to offset or line-based patterns for even a larger choice. These screen patterns can optimise the quality of any print application and, as a result, deliver the most stunning images that your customers will love and pay a premium for high-value applications.

### BETTER HANDLING OF TEXTURE MEDIAS



Other brand printer



imagePress C800/C700



End-to-end Productivity. With the **imagePRESS C800/C700/C600** create high-value applications that will drive your business forward. These include eye-catching brochures, high-quality full bleed booklets, quality perfect bound books and many more.

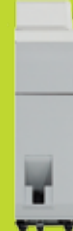


**1 Booklet Trimmer**

Enables a common edge to be created on booklets generated via the saddle finisher.

**Two-Knife Booklet Trimmer**

Add a further trimming accessory and three-sided trimming is possible, for a highly professional finish.



**3 Paper Folding Unit**

The paper folding units allows to fold sheets in the following formats: Z-Fold, C-Fold, Accordion Z-fold, Double parallel and Half fold.



**2 Finisher**

The finisher has a capacity of 5,000 sheets and a stapling capacity of 100 sheets. Single and double stapling options are provided for added versatility.

**Saddle Finisher**

The booklet finisher carries out all the functions of the finisher but additionally enables you to produce outstanding saddle stitched booklets of up to 100 pages (80 gsm).



**4 High Capacity Stacker**

Allows heavyweight document production with a stacking capacity of 6,000 sheets. Interface to 3rd party finishers possible if optional DFD kit is installed.



**5 Perfect Binder**

This enables quality perfect bound books to be created. Low temperature hot glue technology binds the book and cover, whilst precise 3-edge trimming creates a professional finish.



## imagePRESS SERVERS

Productive, Innovative and Intuitive workflows:



### imagePRESS Server F200 (External) & imagePRESS Server G100 (Embedded)

Powerful, fast and intuitive EFI controllers with professional level colour management tools.

### Canon imagePRESS Printer Kit

Powerful and easy to use for production of high-quality print jobs.



#### 6 Professional Puncher

For advanced punching such as plastic comb, twin loop and pro click, the professional puncher can be configured. Punching patterns are available as die sets when can be easily changed by the user.



#### 7 Duplex Colour Image Reader

Colour flatbed scan unit plus one-pass duplex automatic document feeder.



#### 7 Document Insertion Unit

The document inserter enables heavy and pre-printed media from a different source to be added to jobs, for an added professional touch.



#### 9 Main Unit

The imagePRESS C800 prints at 80 images per minute.

The imagePRESS C700 prints at 70 images per minute.

The imagePRESS C600 prints at 60 images per minute.

All models can run at maximum speed on heavy stock up to 220gsm and produce duplex print jobs on 300 gsm media.



#### 10 Multi-Drawer Paper Deck

The new Multi-Drawer paper deck features three paper drawers for a total capacity of 6,000 sheets. It contains 3 new technologies for a even more reliable feeding.



#### POD Deck Lite

A high-reliable paper deck with a capacity of up to 3,500 sheets.

# PRODUCT SPECIFICATIONS

## MAIN UNIT - GENERAL SPECIFICATIONS

Technology	Colour Laser Beam Printing
Resolution	Up to 2400dpi x 2400dpi
Colour Gradations	256 per colour
Registration Tolerance	Front to Back: 1.0mm or less
Print Speed	<b>C800</b> - up to 80pp/min <b>C700</b> - up to 70pp/min <b>C600</b> - up to 60pp/min
Paper Size	100 mm x 148 mm to 330.2 mm x 487.7 mm
Paper Weight	52 to 300g/m <sup>2</sup>
Paper Capacity	<b>Standard</b> 3 x 550-sheet cassettes (80 g/m <sup>2</sup> ) <b>Option</b> 100-sheet multi-purpose tray (80 g/m <sup>2</sup> ) <b>POD Deck Lite-B1</b> 1 x 3500 sheets side paper deck (A4/A3/SRA3) <b>Multi-drawer Paper Deck B1</b> 1 x 6,000 sheets (3 x 2,000 sheets - A4/A3/SRA3)
Max Paper Input Capacity	7,650 sheets (A4/A3)
Max Paper Output Capacity	11,200 sheets (A4/A3)
Supported Media Types	<b>Cassettes</b> Thin paper, Plain paper, Recycled paper, Colour paper, Heavy paper, Pre-punched paper, Bond, Letterhead, Tab paper* Transparency, Envelopes** <b>Multi-purpose tray</b> Thin paper, Plain paper, Recycled paper, Colour paper, Heavy paper, Coated paper, Pre-punched paper, Tab paper, Bond, Transparency, Label, Envelopes, Letterhead <b>Optional Paper Deck</b> Thin paper, Plain paper, Recycled paper, Colour paper, Heavy paper, Pre-punched paper, Coated paper, Textured, Bond, Transparency, Label, Letterhead, Tab paper***, Envelopes
Supported media sizes	<b>Paper cassette 1, 2 &amp; 3</b> <b>Standard size</b> A4, A4R, A5R, A3, SRA3, 330 x 483 mm <b>Free size</b> 100 mm x 148 mm to 330.2 mm x 487.7 mm <b>Multi-purpose tray</b> <b>Standard size</b> A4, A4R, A5R, A3, SRA3, 330 x 483 mm <b>Free size</b> 100 x 148 mm to 330.2 x 487.7 mm <b>Envelopes</b> No.10 (COM10), Monarch, ISO-C5, DL
Supported media weights	<b>Cassettes</b> 52 to 220 gsm <b>Multi-purpose tray/Optional Paper deck</b> 52 to 300 gsm <b>Duplex</b> 52 to 300 gsm
Warm Up Time	Approximately 360 seconds
Interface type	USB 2.0 Hi-speed <b>Ethernet Standard</b> 1000 BaseT/100Base-TX/10Base-T 2 x USB Host
Network protocols	TCP/IP* (LPD/Port 9100/WSD/IPP/PPS/SMB/FTP), IPX/SPX (NDS, Bindery), AppleTalk
Processor speed	1.66 GHz (SOC ARM 1136JF-S 400 MHz ARM 946 200 MHz)
Memory	1.5GB (SOC 2GB)
Hard Disk Drive Standard	1TB Hard Disk Drive
Control panel	Upright Control Panel D1: 26.4 cm (10.4 inch) TFT SVGA LED Backlight Colour Upright Touchscreen
Dimension (W x D x H)	1,952 mm± x 934 mm x 1,424 mm**
Min Installation space	1,952mm (W) x 1,624mm (D)
Weight	Approx 316kg *includes ADF
Operating environment	Temperature- 20 to 27°C (50 to 86°F) Humidity- 15 to 60 % RH (no condensation)
Power Source	220-240 V (-10 %), 50/60 Hz (±2 Hz), 13AMP x 2
Power Supply Consumption	<b>Max</b> Approx 1,560W (at power supply) or less + 2,500W (at fusing unit) or less <b>Standby</b> Approx. 1.0Wh or less <b>Sleep mode</b> Approx. 1.5Wh or less
Noise Levels Sound Pressure	<b>Active</b> 75dB or less <b>Standby</b> 56dB or less

\* Requires Tab feeding attachment  
\*\* Requires Envelope feeding attachment  
\*\*\* Requires Multi Drawer Paper Deck B1

\* IPv4/IPv6 support  
\*\* Includes Operator Panel and Output tray option  
\*\*\* Includes Operator Panel Height to ADF is 1,222.2mm

## FINISHER AM1 / SADDLE FINISHER AM2 [PRO SERIES]

Tray Capacity	<b>Upper Tray</b> 1,000 sheets <b>Lower Tray</b> 4,000 sheets <b>Staple Positions</b> Corner & Double Staple (Finisher)
Paper Weight	52 to 300 gsm
Paper Size	100 mm X 148mm to 330.2 mm x 487.7 mm, A3, B4, A4, A4R, A5R etc
Staple Capacity	<b>Finisher/Saddle Finisher</b> Up to 100 Sheets (Corner & Double Stapling) <b>Saddle Finisher</b> 25 Sheets
Dimensions (W x D x H)	800 mm x 792 mm x 1239 mm
Weight	Approx.130 kg / 180 kg

## STAPLE FINISHER - T1/BOOKLET FINISHER - T1 [Light Series for iPRC700 & C600]

Tray Capacity	<b>Tray A</b> 250 sheets <b>Tray B</b> 1,300 sheets <b>Tray C</b> 2,450 sheets
Staple Positions	Corner & Double Staple (Staple Finisher) Corner, Double or Centre Stitch (Booklet Finisher)
Paper Weight	52 to 300 gsm
Paper Size	52 to 300 GSM, 60 to 256 GSM (Cover for Centre Stitch) 100 mm X 148mm to 330.2 mm x 487.7 mm, A3, B4, A4, A4R, A5R etc
Staple Capacity	<b>Staple/Booklet Finisher</b> Up to 50 Sheets (Corner & Double Stapling)
Dimensions	16 Sheets, Saddle Folding: 1 sheet
Weight	644 mm x 656 mm x 1121 mm Approx. 48 kg / 72 kg

## BOOKLET TRIMMER D1 Requires Booklet Finisher

Trim Width	2-20mm
Trim Thickness	Up to 50 sheets (includes Cover)
Acceptable Paper Weight	52 to 300g/m <sup>2</sup>
Dimensions (W x D x H)	1,575mm x 770mm x 1,040mm
Weight	Approx 152 kg

## TWO-KNIFE BOOLET TRIMMER D1 Requires Booklet Trimmer

Trim Width	2-15 mm
Trim Thickness	Up to 50 sheets (includes Cover)
Acceptable Paper Weight	52 to 300 gsm
Dimensions (W x D x H)	536 mm x 770 mm x 1,040 mm
Weight	Approx 145 kg

## DUPLEX COLOR IMAGE READER-H1

Image Sensor	CCD
Document Size	Statement to 279.4mmx 431.8mm
Resolution	600 x 600 dpi, 256 Gradations
Scan Speed	<b>300 dpi</b> <b>600 dpi</b>
	BW (duplex) 200 120
	Color (duplex) 140 70

## PUNCH UNIT BT1/BU1 Requires Booklet Finisher AM1 or AM2

Punch Hole type	<b>BT1</b> 2 holes and 4 holes (FRN) selectable, <b>BU1</b> 4 holes (Swe)
Acceptable Punch Paper Weight	52-300 gsm
Acceptable Punch Paper Size	<b>2 holes</b> A3, A4, A4R, Free size (182 x 182 to 297 x 432.0 mm) <b>4 holes</b> A3, A4, Custom size, Free size (257 x 182 mm to 297 x 432 mm)
Weight	Approx 7.7 kg

## DOCUMENT INSERTION UNIT M1

Number of trays	2 trays
Paper size	A3, A4, A4R, SRA3, Free size (182 x 182 mm to 330.2 x 487.7 mm)
Paper Weight	52 to 300 gsm
Paper Capacity	200 sheets x 2 trays (80 gsm)
Dimensions (W x D x H)	336 mm (746mm including Tray) x 793 mm x 1407 mm
Weight	61 kg

## HIGH CAPACITY STACKER G1

Paper Size	A3, A4, A4R, A5R, SRA3, Free size (140 x 182 mm to 330.2 x 487.7 mm)
Paper Weight	52 to 300 gsm
Output Capacity	6,000 sheets (80 gsm) in two stacks of 3,000 sheets each
Dimensions	200 sheets
Weight	899 mm x 792 mm x 1,040 mm Approx. 120 kg

## PAPER FOLDING UNIT F1

Z-Fold	<b>Paper size</b> A3, A4R
C-Fold	<b>Paper weight</b> 52 to 105 gsm
Accordion Z-fold	A4R 52 to 105 gsm
Double parallel	A4R 52 to 90 gsm
Half fold	A4R 52 to 105 gsm
Output Capacity	C-Fold and Accordion Z-fold: 40 sheets, Double parallel: 25 sheets
Dimensions (W x D x H)	336 mm x 793 mm x 1190 mm Approx. 71 kg

## PERFECT BINDER D1

Booklet size	<b>Width</b> 203 to 297 mm <b>Length</b> 138 to 216 mm
Booklet thickness	Up to 25 mm
Cutting Range	<b>Top/bottom Foreedge</b> 6.5 to 39.5 mm at each edge <b>Number of sheets</b> 6.5 to 49.5 mm <b>Sizes</b> 10 to 200 sheets (80 gsm) A4, SRA4, Free size (Width: 257 to 320 mm, Length: 182 to 228.6 mm)
Body pages	<b>Paper weight</b> 52 to 163 gsm* (*106 to 163 gsm: up to 10 sheets as inserted paper)
Cover	<b>Number of sheets</b> 1 sheet <b>Sizes</b> A3, SRA3, Free size (Width: 257 to 330.2 mm, Length: 364.0 to 487.7 mm) <b>Paper weight</b> 91 to 300 gsm
Tray capacity	Approx.127 mm or total approx. 1,000 sheets of paper as a total
Dimensions	922 x 791 x 1,300 mm
Weight	306 kg
Power	240V, 2.6A

# SERVER SPECIFICATIONS

	imagePRESS Server F200 (External Fiery Based Server)	imagePRESS Server G100 (Embedded Fiery Based Server)
Page Description Languages	PCL5/6 (Driver & utility support :Only for embedded/ PCL interpreter is available on external Fiery server)	
Adobe PostScript	Level 3	
Memory	2 x 2 GB	1 x 2 GB
Hard Disk Drive	1 x 1 TB	1 x 500 GB
Processor Speed	Up to 3.1 GHz (Intel Core i5 2400)	2.9 GHz (Intel Pentium G850)
Fonts	138 Adobe PS fonts, 113 PCL fonts, 32 barcode	
Supported Operating Systems	Windows XP, Server 2003, Server 2008, Server 2008R2, Server 2012, Vista, 7, 8, 8.1, MacOS 10.5, 10.6, 10.7, 10.8, 10.9	
Interface	Ethernet 1000 Base-T/100Base-TX/10Base-T, USB, DVI connector (only for F200), DSUB 15pin connector (Only for G100)	
Network Protocol	TCP/IP, AppleTalk (only support font downloader), Bonjour, SNMP, IPP, FTP, SMB, IPv6,WSD (minimum support to achieve WHQL certification)	
EFI accessories (Optional)	SeeQuence Suite/Impose/Compose,	
	GA Package Premium Edition Removable HDD Kit	Productivity Package

## HEAD OFFICE

### Canon India Pvt. Ltd.

7th Floor, Tower B, Cyber Epitome, DLF Phase 3, Gurgaon 122002, Haryana  
Tel - 0124 - 4160000 | Fax - 0124 - 4160011  
www.canon.co.in  
Call: 1800 180 3366 (Toll Free) or 39010101\*  
(\*Prefix your city code while dialing)

## CANON OFFICES IN INDIA

### BANGALORE

Canon India Pvt. Ltd.  
No.135, 2nd Floor, Brigade Towers,  
Brigade Road, Bangalore - 560 025  
Tel: 080 - 40079400.  
Tel Fax: 080 -40079401

### MUMBAI

Canon India Pvt. Ltd.  
4th Floor & 5th Floor  
Natraj by Rustomjee  
194, Junction of Western Express  
Highway & Andheri Kurla Road,  
Andheri East.  
Mumbai - 400069  
Tel: 022 - 67145000

### KOLKATA

Canon India Pvt. Ltd.  
3A, 1st Floor, Shakespeare Sarani,  
Kolkata - 700071  
Tel: 033 - 40110700  
Tel Fax: 033 - 40110731  
Fax : 91-124-4160011  
Service Center: 033 - 40110710 / 711

### HYDERABAD

Canon India Pvt. Ltd.  
The Belvedere,  
H.No.: 6-3-891/892,  
2nd floor, Raj Bhawan Road,  
Somajiguda,  
Hyderabad-500082  
Telephone : 040 39995800  
Fax : 040 39995801

### CHENNAI

Canon India Pvt. Ltd.  
2nd Floor, Wood Head Centre,  
23, Sivaganga Road,  
Nungambakkam,  
Chennai - 600034  
Telephone : 044-49080000  
Fax : 044-28241965

### CHANDIGARH

Canon India Pvt. Ltd.  
SCO No. 359, 4th Floor,  
Sector - 34A, Chandigarh  
Tel: 0172 - 4098800

Canon India complies with eWaste Rules 2011.

Please return end-of-life product for environmental safe disposal. For details visit <http://www.canon.co.in/personal/web/company/qehs/recycling>

This document is for information purpose only. The contents are subject to change without notice. Product options, name and availability may vary by regions. We expressly disclaim any liability or contractual obligations with respect to this document. Brands and product names are trademarks and/or registered trademarks of their respective owners.

Canon India Pvt. Ltd.  
Printed in India